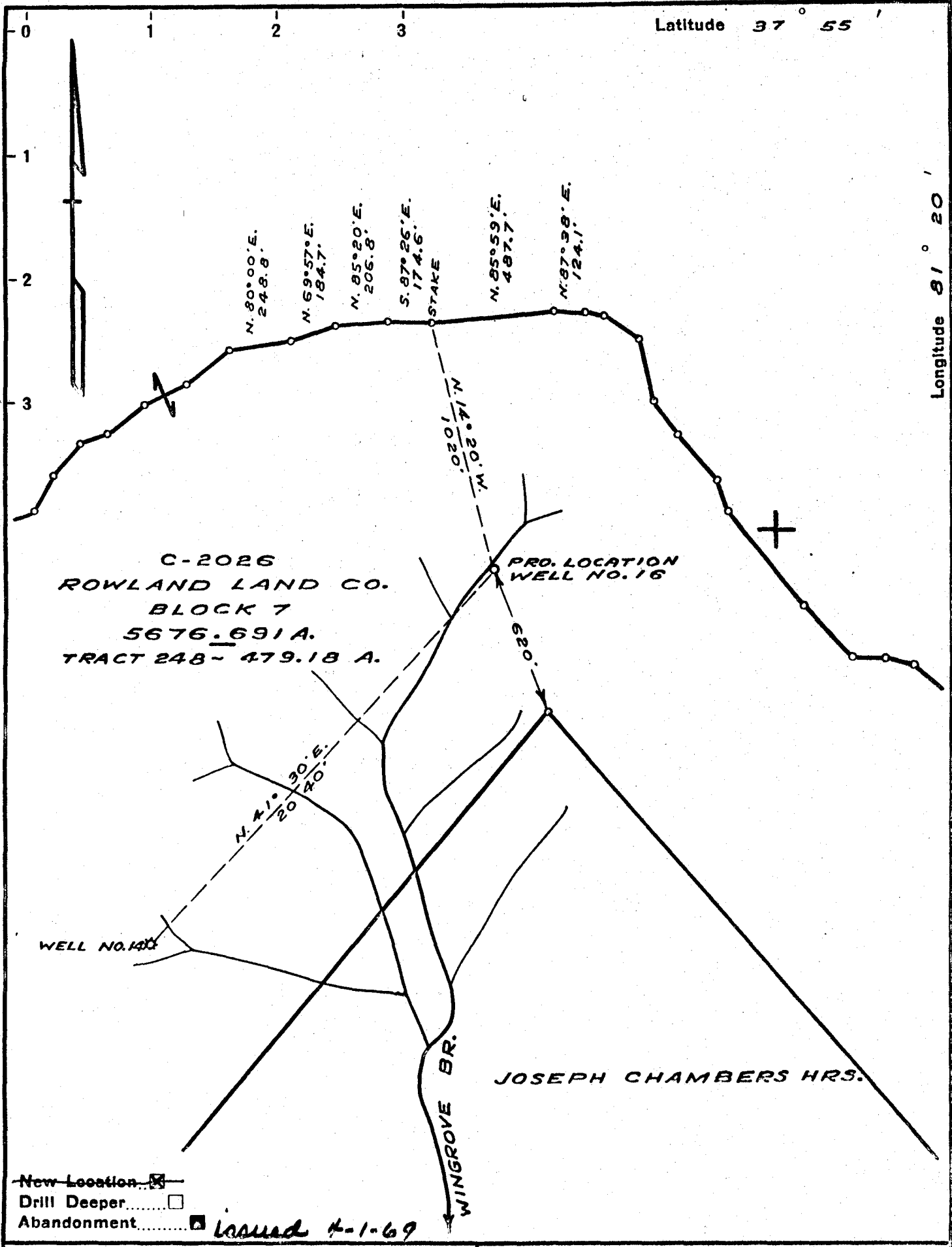


H. H. HAYDEN



Company CITIES SERVICE OIL Co.
COLUMBIAN CARBON CO.

Address Box 873
CHARLESTON W. VA.

Farm ROWLAND LAND CO.

Tract 248 Acres 479.18 Lease No. C-2026

Well (Farm) No. 16 Serial No. GW-923

Elevation (Spirit Level) 2432.8

Quadrangle ECCLES 5-12-140

County RALEIGH District CLEAR FORK

Engineer [Signature]

Engineer's Registration No. 772

File No. _____ Drawing No. 398

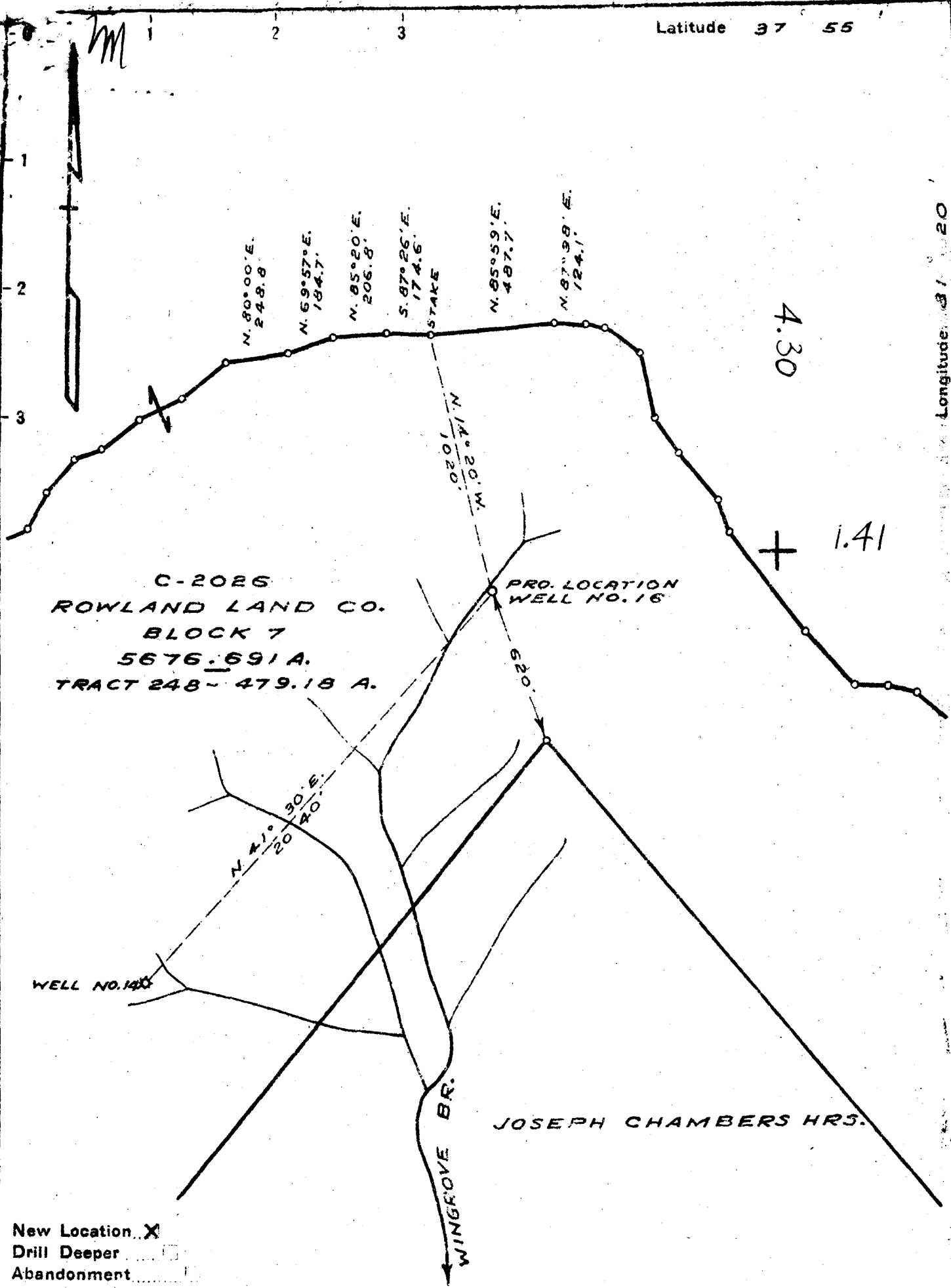
Date SEPT. 18, 1946 Scale 1" = 500'

STATE OF WEST VIRGINIA
DEPARTMENT OF MINES
OIL AND GAS DIVISION
CHARLESTON

WELL LOCATION MAP
FILE NO. RAI-80-P

+ Denotes location of well on United States Topographic Maps, scale 1 to 62,500, latitude and longitude lines being represented by border lines as shown.

- Denotes one inch spaces on border line of original tracing.



Company COLUMBIAN CARBON CO.
 Address CHARLESTON W. VA.
 Farm ROWLAND LAND CO.
 Tract 248 Acres 479.18 Lease No. C-2026
 Well (Farm) No. 16 Serial No. _____
 Elevation (Spirit Level) 2432.8
 Quadrangle ECCLES 5-421-140
 County RALEIGH District CLEAR FORK
 Engineer J. M. Sell
 Engineer's Registration No. 772
 File No. _____ Drawing No. 398
 Date SEPT. 18, 1946 Scale 1" = 500'

STATE OF WEST VIRGINIA
 DEPARTMENT OF MINES
 OIL AND GAS DIVISION
 CHARLESTON

WELL LOCATION MAP
 FILE NO. RAL-80

+ Denotes location of well on United States Topographic Maps, scale 1 to 62,500, latitude and longitude lines being represented by border lines as shown.

- Denotes one inch spaces on border line of original tracing.

WEST VIRGINIA DEPARTMENT OF MINES
OIL & GAS DIVISION
WELL RECORD

Permit No. Ral 80
Eccles Quad.
Company
Address
Farm
Location
Well No.
District
Surface
Mineral
Commenced
Completed
Not shot
Open flow
Volume
Rock Pressure
Fresh Water

Columbian Carbon Company
Box 873, Charleston 23, W.Va.
Rowland Land Company A 479-18
Windgrove Br.
16(GW-923) Elev. 2432.8 G
Clear Fork Raleigh County
Rowland Land Co. St. Albans, W.Va.
Same
10-23-46
1-25-47

69/10ths W in 7" 23#
3,546,000 C.F.
425 lbs. 48 hrs.
95' 1-10" blr. per hr.
195' H.F.

Gas Well
CASING & TUBING

13 3/8	52'9	Same
10 1/2	1009'1	"
8 1/2	2240'5	"
5 1/2	23'	23'

8 5/8" x 3" Gas Anchor
w/ 5 1/2" bottom
Depth 2206'

Coal at 70' 60"; 315'
60"; 1510' 36"

Sand & Gravel	0	53
Sand	53	58
Slate & Lime	58	70
Coal	70	75
Slate & Lime	75	95
Sand	95	110
Lime	110	120
Slate & Lime	120	135
Lime	135	147
Slate	147	235
Lime	235	266
Slate & Lime	266	281
Lime	281	315
Coal	315	320
Sand	320	348
Lime	348	392
Sand	392	428
Slate & Lime	428	490
Lime	490	500
Slate	500	517
Sand	517	564
Slate & Lime	564	697
Sand	697	710
Slate & Lime	710	760
Lime	760	807
Sand	807	956
Slate & Lime	956	990
Sand	990	1036
Slate & Lime	1036	1052
Sand	1052	1063
Slate & Lime	1063	1146
Sand	1146	1165
Slate & Lime	1165	1228
Lime & Sand	1228	1252
Slate & Lime	1252	1295
Sand	1295	1311
Slate & Lime	1311	1332
Sand	1332	1498
Slate & Lime	1498	1510
Coal	1510	1513
Slate	1513	1519
Lime	1519	1550
Slate & Lime	1550	1565
Lime	1565	1581
Sand	1581	1721
Slate	1721	1735
Lime	1735	1749
Sand	1749	1773
Lime	1773	1788
Red Rock	1788	1809
Lime	1809	1865
Sand	1865	1902
Slate & Lime	1902	1910

Red Rock	1910	1923
Lime	1923	1965
Sand	1965	2002
Slate & Lime	2002	2194
Maxon Sand	2194	2233SLM
Total Depth		2233SLM

Gas Pay: 2218-2230

CEMENT RECORD: 11-29-46 10 3/4" casing.
Ran 18 bags aquagel, 1 sack fibrotex.
No circulation-no returns. C.C.Co.Crew