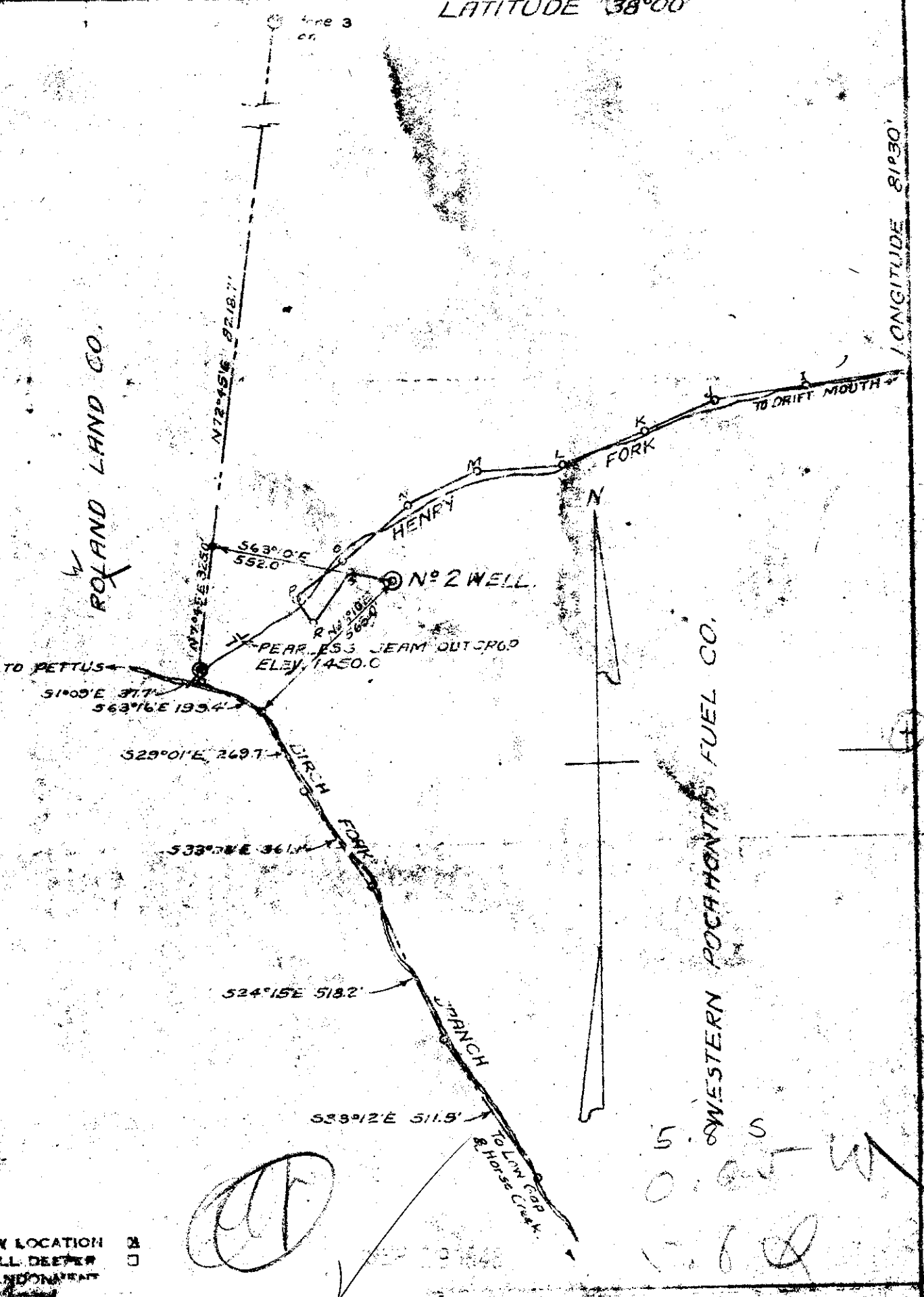


LATITUDE 38°00'

LONGITUDE 81°30'

ROLAND LAND CO.

WESTERN POCAHONTAS FUEL CO.



NEW LOCATION   
 DRILL DEPTH   
 ABANDONMENT

*(Handwritten circled '2')*

*(Handwritten notes: 5.0.0.5 W, 5.6.0.0)*

THE OIL AND GAS COMPANY  
 ADDRESS 206 CAREY TOULSON BUILDING  
 FARM WESTERN POCAHONTAS FUEL CO.  
 TRACT 1 ACRES 8273 LEASE NO. 1  
 WELL (FARM) No. 2 SERIAL No. 2  
 ELEVATION (SPIRIT LEVELS) 1571.80  
 QUADRANGLE BALD KNOB  
 COUNTY RALEIGH DISTRICT MARSH FORK  
 ENGINEER GEO. H. MILLER, E.M.  
 ENGINEERS REGISTRATION No. 1892  
 FILE NO. A-10 DRAWING No. T-4  
 DATE 8-13-48 SCALE 1"=400'

STATE OF W. VA.  
 DEPARTMENT OF MINES  
 OIL AND GAS DIVISION  
 CHARLESTON  
**WELL LOCATION MAP**  
 FILE NO. RAL-132

+ DENOTES LOCATION OF WELL ON UNITED STATES TOPOGRAPHIC MAP'S SCALE 1" TO 62,500' LONGITUDE AND LONGITUDE LINES BEING REPRESENTED BY BORDER LINES AS SHOWN.  
 -- DENOTES ONE INCH SPACES ON BORDER LINE OF ORIGINAL TRACING.

6-0 247

WESTERN POCAHONTAS FUEL CO. FILE NO. 2(2) - TATE O & G - RAL-132

