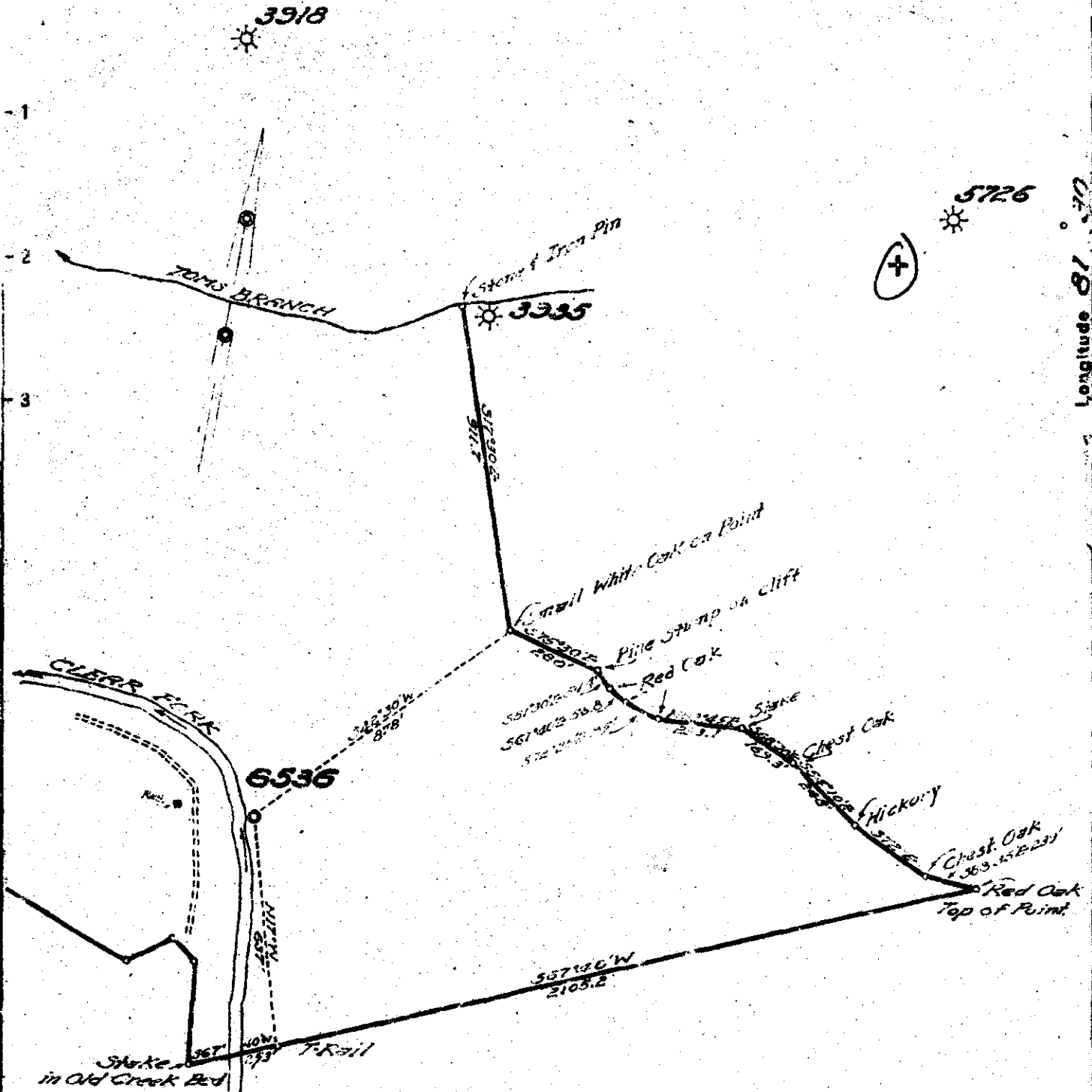


Latitude 38° 00'

Longitude 81° 30'



New Location
 Drill Deeper
 Abandonment

2275
1.38W

Company UNITED FUEL GAS CO.
 Address CHARLESTON, W.VA.
 Farm J.A. BARRETT
 Tract _____ Acres 203 Lesse No. 47352
 Well (Farm) No. 2 Serial No. 6536
 Elevation (Spirit Level) 834.71
 Quadrangle BALD KN09
 County RALEIGH District CLEARFORK
 Engineer J.A. Barrett
 Engineer's Registration No. 6017
 File No. 66-33 Drawing No. _____
 Date 3-9-49 Scale 1"=100

STATE OF WEST VIRGINIA
 DEPARTMENT OF MINES
 OIL AND GAS DIVISION
 CHARLESTON

WELL LOCATION MAP
 FILE NO. RAL-153

+ Denotes location of well on United States Topographic Maps, scale 1 to 62,500, latitude and longitude lines being represented by border lines as shown.

→ Denotes one inch spaces on border line of original tracing.

WEST VIRGINIA DEPARTMENT OF MINES
OIL & GAS DIVISION
W E L L R E C O R D

Permit No. Bal 153
Bald Knob Quad.

Gas Well
CASING & TUBING

Company	United Fuel Gas Company		
Address	P.O. Box 1273, Charleston 25, W.Va.	13 3/8	26 26
Farm	J.A. Barrett Acres 204	10 1/2	289 289
Location	Clear Fork of Coal River	8 5/8	1255 1255
Well No.	6536 Elev. 837.74	7	1920 1920
District	Clear Fork Raleigh County		
Surface			Coal at 67' 36"
Mineral	Barrett & Company c/o Maud Barrett, Barboursville, W.Va.		
Commenced	4-14-49		
Completed	6-24-49		
Not shot			
Open flow	42/10ths M in 2"		
Volume	1,008 M- Weir		
Rock Pressure	633 lbs. 48 hrs.		
Fresh Water	67' 5 BPH; 348' 2 1/2 BPH; 800' H.F.		

Surface & Gravel	0	24
Slate & Shells	24	67
Coal	67	70
Slate & Shells	70	210
Sand	210	298
Slate & Shells	298	325
Sand	325	520
Slate	520	545
Sand	545	1200
Slate	1200	1230
Red Rock	1230	1235
Lime	1235	1260
Red Rock	1260	1270
Slate	1270	1280
Lime	1280	1335
Red Rock & Shells	1335	1680
Maxon Sand	1680	1705
Slate & Shells	1705	1880
Lime	1880	1890
Slate	1890	1910
Big Lime	1910	2200
Injun Sand	2200	2225
Slate & Shells	2225	2270
Weir Sand	2270	2380
Slate	2380	2389
Total Depth	2389	

Gas 1945-1951 5/10 W 1" 24 M
 Weir Gas 2290-2296' 2/10 W 2" 60 M
 Weir Gas 2322-2337' 42/10 M in 2" , 1,008 M
 Well Not shot
 Open flow 1,008 M Weir
 48 hr. R.P. 633#
 Shut in 6-24-49 in 7" casing