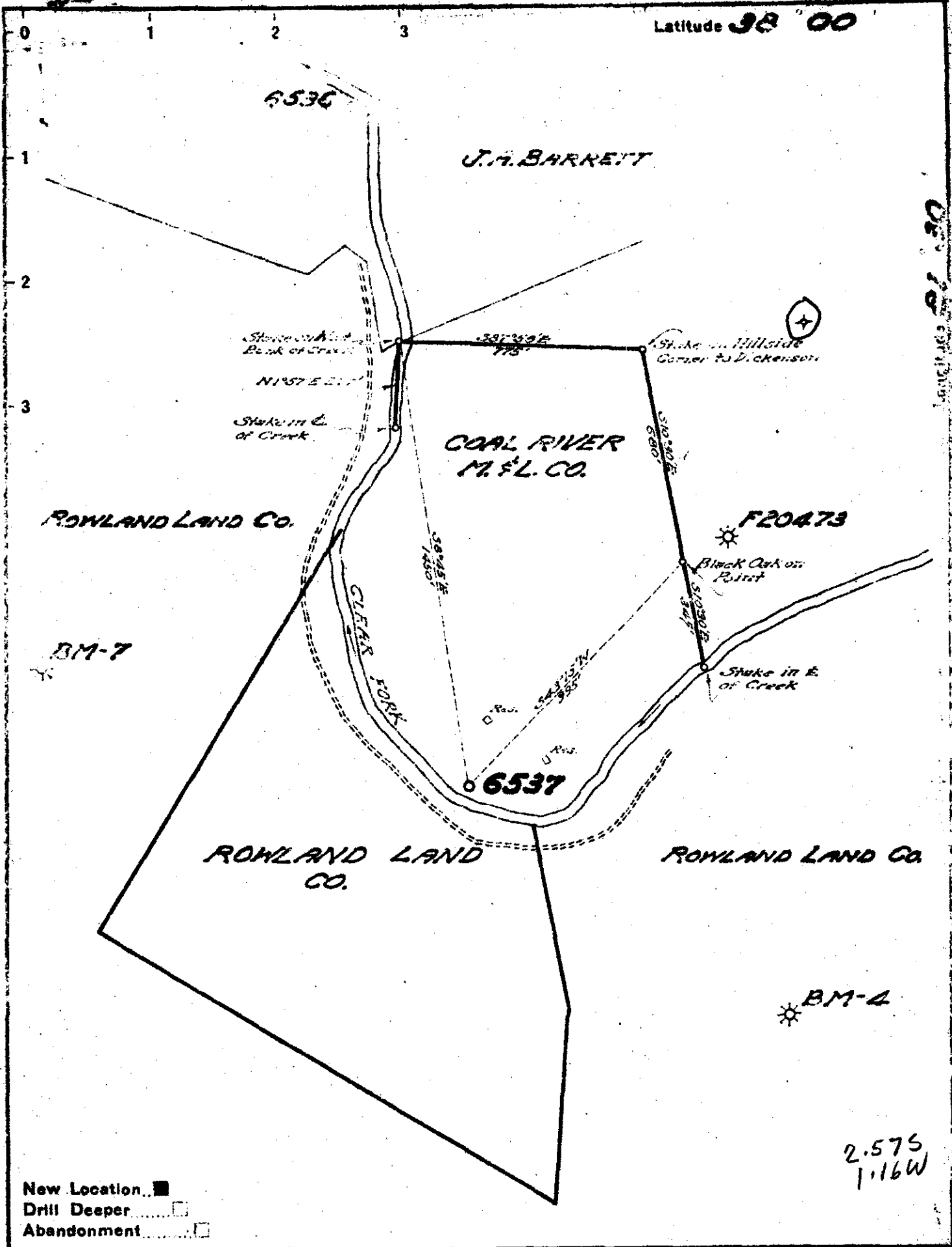


Latitude 38 00



New Location.
 Drill Deeper.
 Abandonment.

Company UNITED FUEL GAS CO.
 Address CHARLESTON, W. VA.
 Farm COAL RIVER MINING & LUMBER CO.
 Tract _____ Acres 98.25 Lease No. 20129
 Well (Farm) No. 11 Serial No. 6537
 Elevation (Spirit Level) 848.43
 Quadrangle BOLD KNOB
 County RALEIGH District CLEAR FORK
 Engineer _____
 Engineer's Registration No. 662
 File No. 66-31 Drawing No. _____
 Date 3-7-49 Scale 1" = 400'

STATE OF WEST VIRGINIA
 DEPARTMENT OF MINES
 OIL AND GAS DIVISION
 CHARLESTON

WELL LOCATION MAP
 FILE NO. RAL-157

+ Denotes location of well on United States Topographic Maps, scale 1 to 62,500, latitude and longitude lines being represented by border lines as shown.

— Denotes one inch spaces on border line of original tracing.

2.575
1.16W

6-6-247 ✓

WEST VIRGINIA DEPARTMENT OF MINES
OIL & GAS DIVISION
W E L L R E C O R D

Gas Well
CASING & TUBING

Permit No. Ral 157				
Bald Knob Quad.				
Company	United Fuel Gas Co.			
Address	P.O. Box 1273, Charleston 25, W.Va.	13 3/8	33	33
Farm	Coal River Mining & Lbr. Co. A 583.4	10 1/2	314	314
Location	Clear Fk. of Coal River	8 5/8	1313	Pld.
Well No.	6537 Elev. 848.43'	7	1911	1911
District	Clear Fork Raleigh County			
Surface				
Mineral	Coal River & Lbr. Co., Cumberland, Maryland			
Commenced	6-8-49			
Completed	9-1-49			
Not shot				
Open flow	20/10ths M in 3"			
Volume	1,565 M Weir			
Rock Pressure	561 lbs. 48 hrs.			
Fresh Water	38° H.F.			
Salt Water	720° 1 RPM; 810° H.F.			

Sand & Gravel	0	32
Slate	32	150
Sand	150	195
Slate & Shells	195	210
Sand	210	305
Slate	305	327
Sand	327	465
Gas Sand	465	550
Slate & Shells	550	630
Salt Sand	630	918
Slate & Shells	918	955
Sand Salt Sand	955	1155
Slate & Shells	1155	1200
Sand	1200	1225
Slate & Shells	1225	1245
Red Rock	1245	1270
Slate	1270	1284
Red Rock	1284	1290
Slate	1290	1303
Lime	1303	1350
Red Rock	1350	1390
Sand	1390	1410
Red Rock	1410	1440
Slate & Shells	1440	1500
Red Rock	1500	1560
Slate & Shells	1560	1620
Red Rock	1620	1682
Maxon Sand	1682	1724
Slate & Shells	1724	1785
Lime	1785	1840
Slate & Shells	1840	1860
Big Lime	1860	2185
Injun Sand	2185	2240
Slate & Shells	2240	2275
Weir Sand	2275	2416
Slate & Shells	2416	2426
Total depth		2426

B. Lime Gas 1878' 10/10 W 1" 33 M
decreased to 3/10 W 1" 18 M
Weir Gas 2303-2325 56/10 W 4" 1,262 M
decreased to 9/10 M 3" 1,050 M
Weir Gas 2336-2352 20/10 M 3" 1,565 M

Not shot
Shut in 9-1-49 in 7" casing.