

WW-7
5-02



West Virginia Department of Environmental Protection
Office of Oil and Gas
WELL LOCATION FORM: GPS

APE: 081-00254 WELL NO.: 1

FARM NAME: Eagle Land Company

RESPONSIBLE PARTY NAME: New River Energy Corporation

COUNTY: Raleigh DISTRICT: Clear Fork

QUADRANGLE: Dorothy

SURFACE OWNER: Eagle Land Company

ROYALTY OWNER: Eagle Land Company

UTM GPS NORTHING: 4200878.58

UTM GPS EASTING: 465897.15 GPS ELEVATION: 533.41 1795 FT.

The Responsible Party named above has chosen to submit GPS coordinates in lieu of preparing a new well location plat for a plugging permit on the above well. The Office of Oil and Gas will not accept GPS coordinates that do not meet the following requirements:

1. Datum: NAD 1983, Zone: 17 North, Coordinate Units: meters, Altitude: height above mean sea level (MSL) – meters.
2. Accuracy to Datum – 3.05 meters
3. Data Collection Method:
Survey grade GPS : Post Processed Differential
Real-Time Differential
Mapping Grade GPS : Post Processed Differential
Real-Time Differential

I the undersigned, hereby certify this data is correct to the best of my knowledge and belief and shows all the information required by law and the regulations issued and prescribed by the Office of Oil and Gas.

Signature

Date

7/2/2013

Title

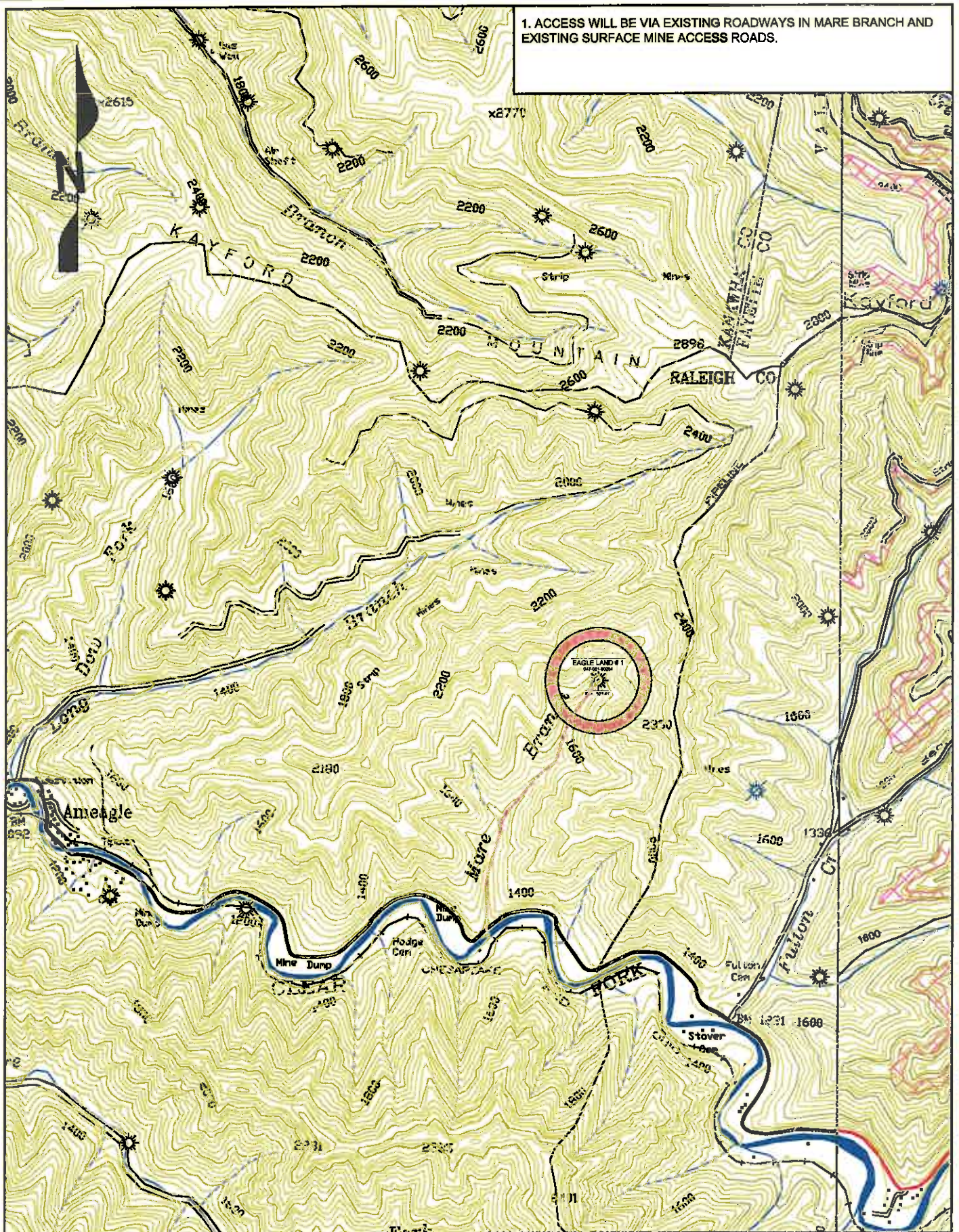
VICE PRESIDENT

Received

JUL - 2 2013

Office of Oil and Gas
WV Dept. of Environmental Protection

1. ACCESS WILL BE VIA EXISTING ROADWAYS IN MARE BRANCH AND EXISTING SURFACE MINE ACCESS ROADS.



NEW RIVER ENERGY CORPORATION
 Reclamation Plan - Form WW-9
 047-081-00254
 Eagle Land # 1
 Redrill, Plug & Abandon Application

District:	CLEAR FORK	County:	RALEIGH
7.5' Quad:	DORTHY	Watershed:	CLEAR FORK
Date:	06/24/2013	SCALE	1" = 2000'

Received

07/12/2013