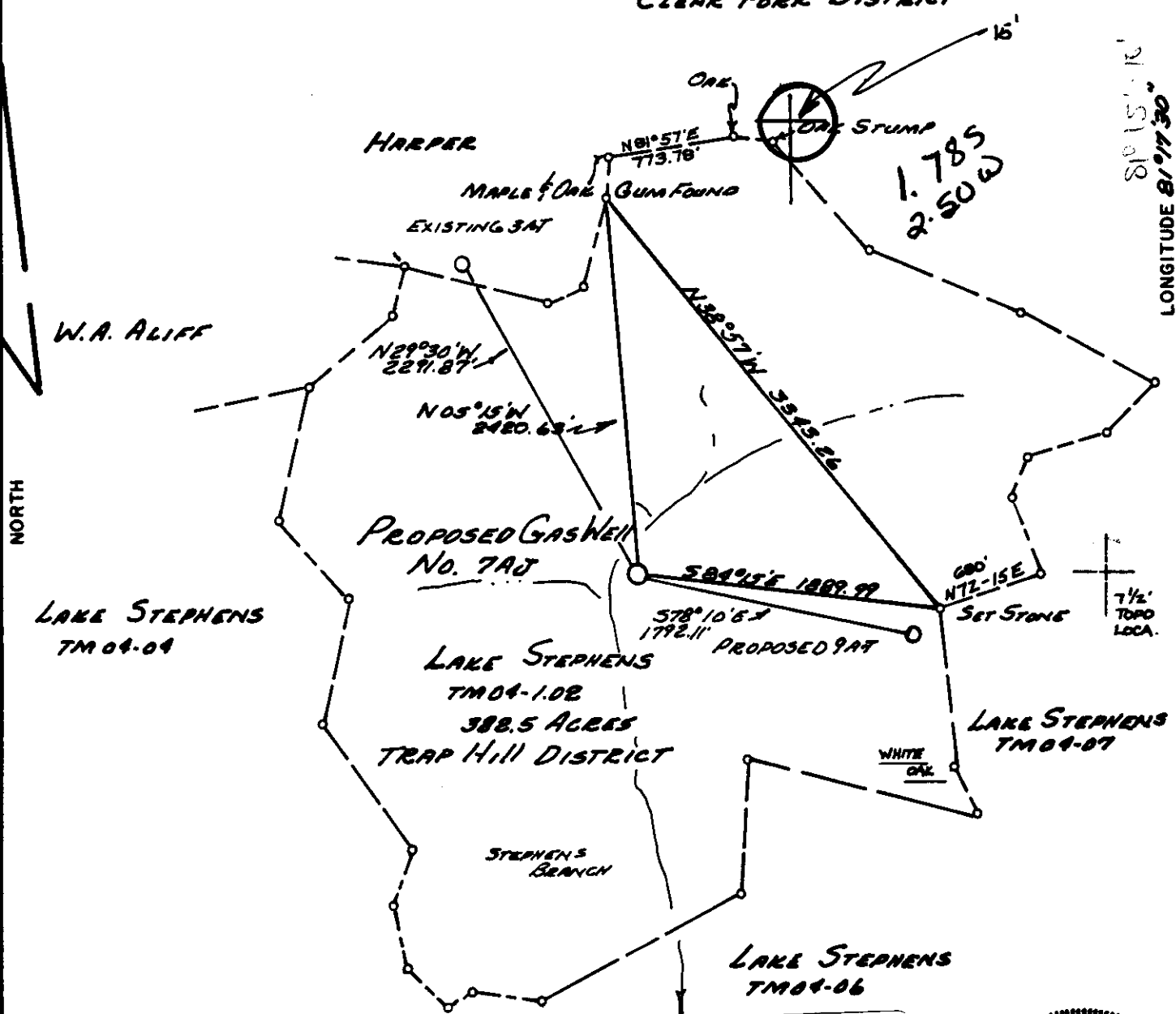


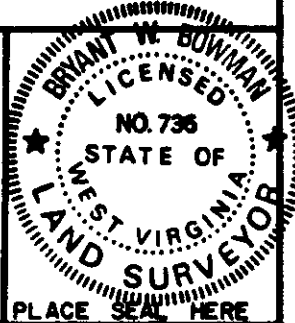
LATITUDE 37°50'

CLEAR FORK DISTRICT



FILE NO. _____
 DRAWING NO. _____
 SCALE 1"=1000'
 MINIMUM DEGREE OF ACCURACY 1:2500
 PROVEN SOURCE OF ELEVATION HIGH KNOB N.E. OF LOCATION

CO: 081 PMT: 630
 Loc Digitized from OGIS 7.5' Mylar
 QUAD: 331 DATE: 25-MAY-90
 LAT: 37 50.0 Miles South: 1.75
 LONG: 81 17.5 Miles West : 0.24
 AND PRESCRIBED BY THE DEPARTMENT OF MINES.
 (SIGNED) Bryant W. Bowman
 R. P. E. _____ L. L. S. 736



(+) DENOTES LOCATION OF WELL ON UNITED STATES TOPOGRAPHIC MAPS
 FORM IV-6
 (8-78)

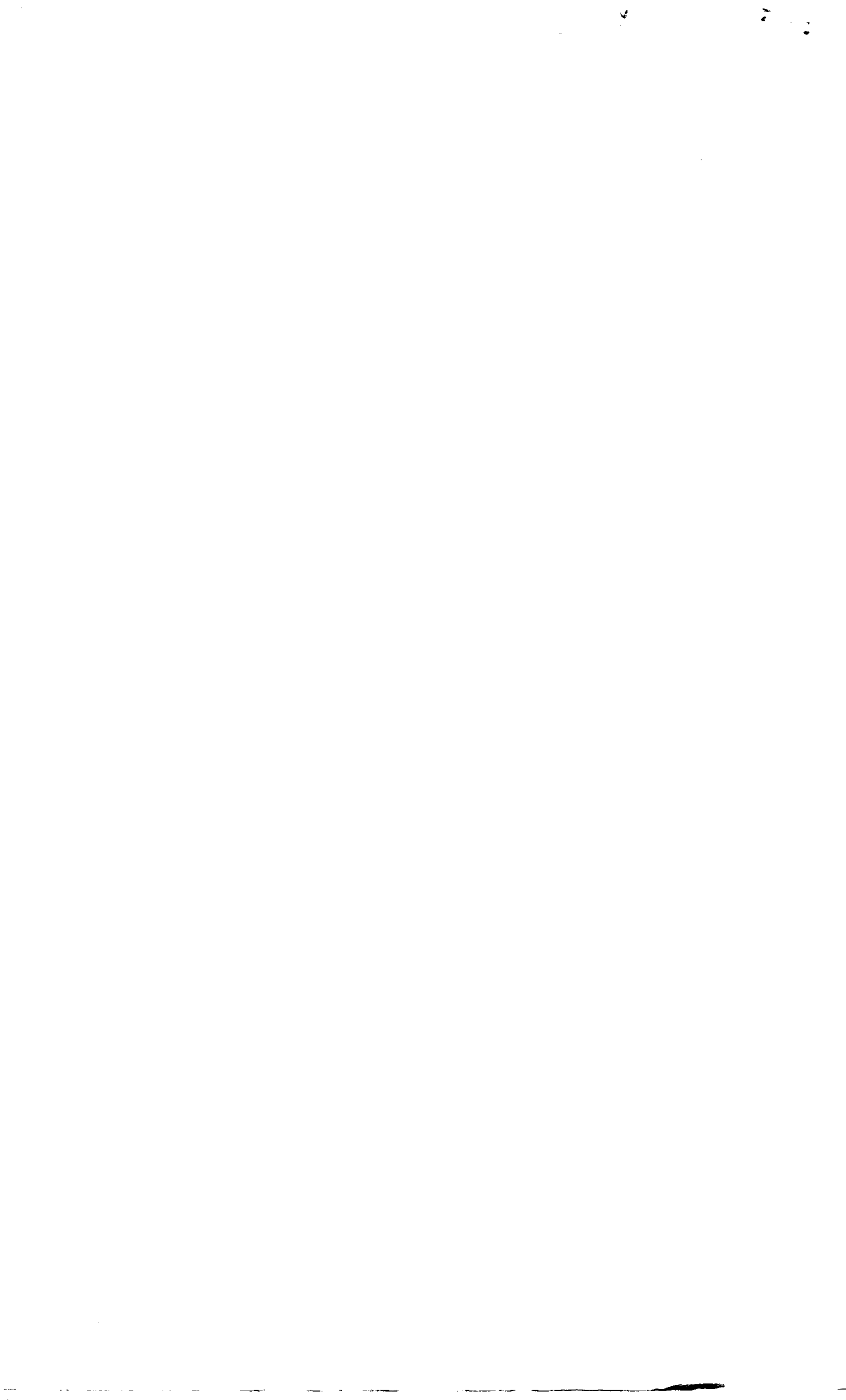


Department of Mines
 Oil & Gas Division

DATE 5/91 19 83
 OPERATOR'S WELL NO. 7A
 API WELL NO. 47-009-0630
 STATE COUNTY PERMIT

JUN 2 1983

WELL TYPE: OIL ___ GAS LIQUID INJECTION ___ WASTE DISPOSAL ___
 (IF "GAS", PRODUCTION STORAGE ___ DEEP ___ SHALLOW)
 LOCATION: ELEVATION 2117 WATER SHED STEPHENS BRANCH
 DISTRICT TRAP HILL COUNTY RALEIGH
 QUADRANGLE ECCLES 7 1/2' & 15' SE
 SURFACE OWNER LAKE STEPHENS ACREAGE 388.50
 OIL & GAS ROYALTY OWNER WESTERN POCANTONAS CORP. LEASE ACREAGE 388.50
 LEASE NO. 155
 PROPOSED WORK: DRILL CONVERT ___ DRILL DEEPER ___ REDRILL ___ FRACTURE OR STIMULATE PLUG OFF OLD FORMATION ___ PERFORATE NEW FORMATION ___ OTHER PHYSICAL CHANGE IN WELL (SPECIFY) ___
 PLUG AND ABANDON ___ CLEAN OUT AND REPLUG ___
 TARGET FORMATION BIG LIME ESTIMATED DEPTH 2737'
 WELL OPERATOR PEAKE OPERATING CO. DESIGNATED AGENT FLOYD WILCOX
 ADDRESS 423 CHARLESTON NAT. PLAZA CHARLESTON, W.V.A. ADDRESS 423 CHARLESTON NAT. PLAZA CHARLESTON, W.V.A.



RECEIVED

SEP 12 1983



IV-35
(Rev 8-81)

OIL & GAS DIVISION
DEPT. OF MINES
State of West Virginia
Department of Mines
Oil and Gas Division

Date August 30, 1983
Operator's
Well No. 7-AJ
Farm Jones & Gibson
API No. 47 - 081 - 630

WELL OPERATOR'S REPORT
OF
DRILLING, FRACTURING AND/OR STIMULATING, OR PHYSICAL CHANGE

WELL TYPE: Oil ___ / Gas X / Liquid Injection ___ / Waste Disposal ___ /
(If "Gas," Production X / Underground Storage ___ / Deep ___ / Shallow X /)

LOCATION: Elevation: 2117' Watershed Stephens Branch
District: Trap Hill County Raleigh Quadrangle Eccles 7 1/2'

COMPANY Peake Operating Company
ADDRESS Suite 423 Charleston National Plaza, Charleston, WV.
DESIGNATED AGENT Floyd B. Wilcox
ADDRESS Suite 423 Charleston National Plaza Charleston, WV 25301
SURFACE OWNER Lake Stephens Development Auth.
ADDRESS Beckley, WV.
MINERAL RIGHTS OWNER Western Pocahontas Co.
ADDRESS P. O. Box 2827, Huntington, WV.
OIL AND GAS INSPECTOR FOR THIS WORK Rue
ADDRESS Schoolcraft Pineville, WV.
PERMIT ISSUED June 21, 1983
DRILLING COMMENCED July 15, 1983
DRILLING COMPLETED July 19, 1983
IF APPLICABLE: PLUGGING OF DRY HOLE ON CONTINUOUS PROGRESSION FROM DRILLING OR REWORKING. VERBAL PERMISSION OBTAINED ON _____

Casing & Tubing Size	Used in Drilling	Left in Well	Cement fill up Cu. ft.
20-16 Cond.			
13-10"	17'	17'	2 sks.
9 5/8			
8 5/8			
7	1015'	1015'	160 sks.
5 1/2			
4 1/2	2674'	2674'	110 sks.
3			
2			
Liners used			

GEOLOGICAL TARGET FORMATION Big Lime Depth 2442-2706 feet
Depth of completed well 2706 feet Rotary X / Cable Tools _____
Water strata depth: Fresh 100 feet; Salt 250 feet
Coal seam depths: None Is coal being mined in the area? No

OPEN FLOW DATA

Producing formation Big Lime Pay zone depth 2533-2575 feet
Gas: Initial open flow 103 Net Mcf/d Oil: Initial open flow 0 Bbl/d
Final open flow 582 Mcf/d Final open flow 0 Bbl/d
Time of open flow between initial and final tests 4 hours
Static rock pressure 570 psig (surface measurement) after 4 ^{days} ~~hours~~ shut in
(If applicable due to multiple completion--)
Second producing formation Ravencliff Pay zone depth 1494-1517 ^{ok} feet
Gas: Initial open flow 73 Net Mcf/d Oil: Initial open flow 0 Bbl/d
Final open flow 198 Mcf/d Oil: Final open flow 0 Bbl/d
Time of open flow between initial and final tests 4 hours
Static rock pressure 190 psig (surface measurement) after 4 ^{days} ~~hours~~ shut in

198
582
780
MCF
FOF

SEP 19 1983

(Continue on reverse side)

DETAILS OF PERFORATED INTERVALS, FRACTURING OR STIMULATING, PHYSICAL CHANGE, ETC.

Perforated Big Lime: 4 holes 2533-35; 4 holes 2539-41; 18 holes 2554-61; 12 holes 2571-75. Acidized with 1000 gal. 28% and 7000 gal. 15% acid, 140 bbl. flush.
 Perforated Ravencliff: 4 holes 1494-96; 4 holes 1499-1501; 20 holes 1511-17.
 Fractured with 15,000# 80/100, 45,000# 20/50, 1000 gal. acid, 273 bbl. fluid, 64,000 SCF N₂. BDP 2200 psi, TP 2400 psi, ISIP 2400 psi, 15 min. SIP 1650 psi.

WELL LOG

FORMATION	COLOR	HARD OR SOFT	TOP FEET	BOTTOM FEET	REMARKS Including indication of all fresh and salt water, coal, oil and gas
Sand & Shale			0	1006	H ₂ O 10 GPM at 100'
Shale			1006	1043	15 GPM at 250'
Sand			1043	1101	
Shale			1101	1280	
Sand			1280	1324	
Shale			1324	1414	
Sandy Shale			1414	1489	
Ravencliff			1489	1526	Gas checks: 1505' No show
Limestone			1526	1566	1543' 73 MCFD
Sandy & Limey Shale			1566	2212	Top of L. Maxton 44 MCFD
Shale			2212	2227	Base of Maxton 56 MCFD
Sand			2227	2250	2200' 43 MCFD
Sandy Shale			2250	2316	2300' 55 MCFD
Little Lime			2316	2398	2531' 51 MCFD
Pencil Cave			2398	2442	2581' 146 MCFD
Big Lime			2442	T. D.	T.D. 112 MCFD
DTD			2706		
LTD			2700		

(Attach separate sheets as necessary)

Peake Operating Company

Well Operator

By: James B. Wilcox

Date: Sept 8, 1983

Note: Regulation 2.02(i) provides as follows:
 "The term 'log' or 'well log' shall mean a systematic detailed geological record of all formations, including coal, encountered in the drilling of a well."

