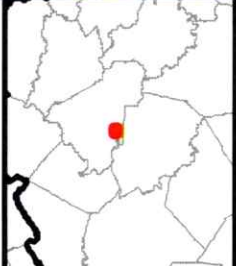
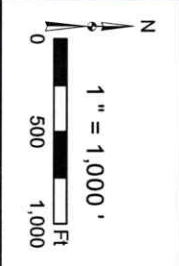


Copyright © 2013 National Geographic Society. Incubed



| Legend | |
|--------|--------------|
| | Well |
| | Access Road |
| | Pits |
| | Pad |
| | Public Roads |

Office of
 Environmental Protection
 WV Department of Environmental Protection
 Well Plugging Map
 47-081-00719

Diversified Gas & Oil Corporation
 100 Diversified Way
 Pikeville KY, 41051
 02/28/2025








Diversified Gas & Oil
Corporation
100 Diversified Way
Pikeville KY, 41051

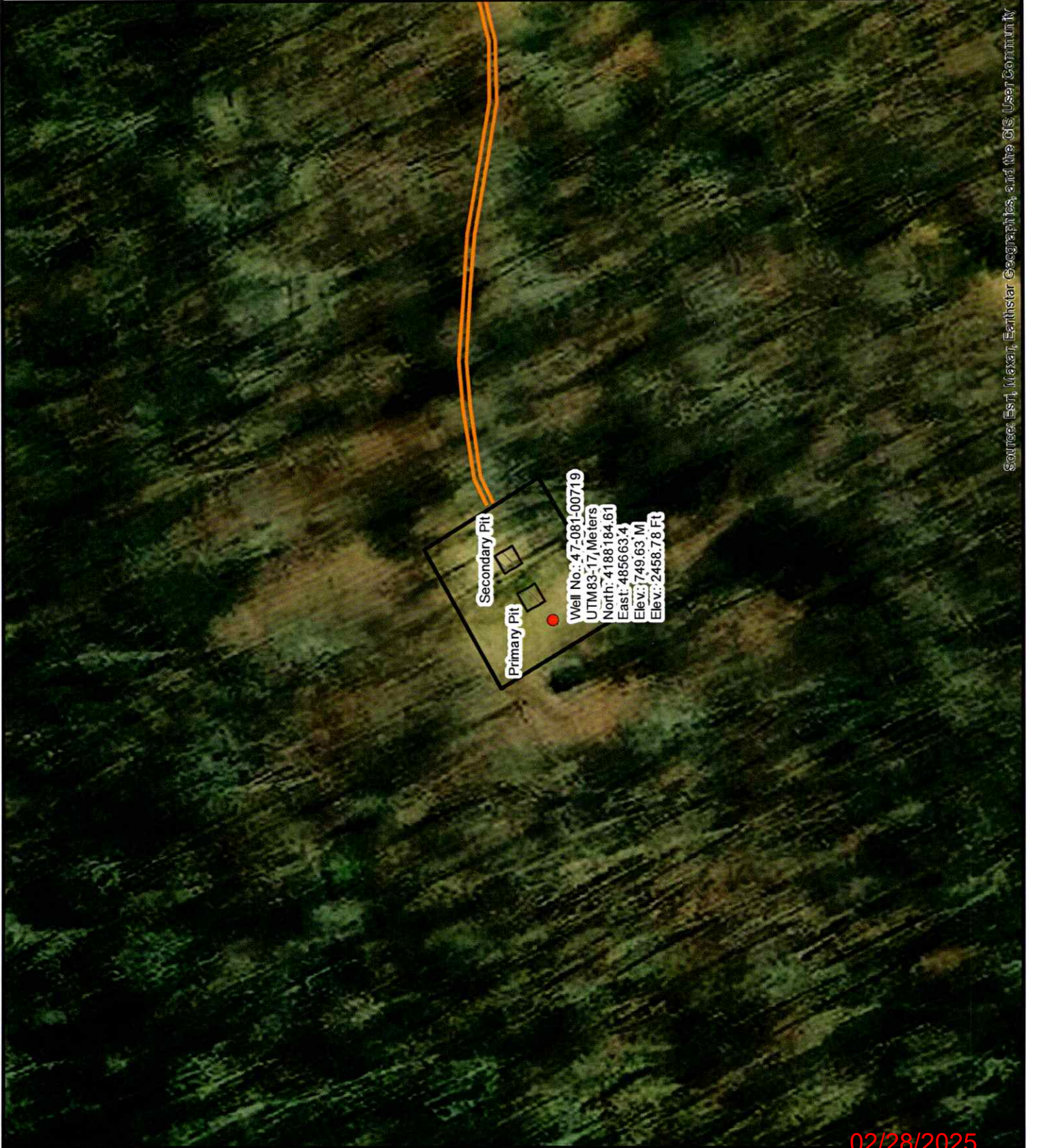
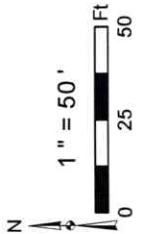
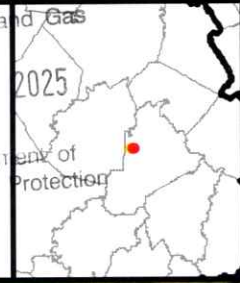
47-081-00719

Well Plugging Map

Legend

-  Well
-  Access Road
-  Pits
-  Pad
-  Public Roads

RECEIVED
Office of Oil and Gas
FEB 07 2025
Ky. Department of
Environmental Protection



Secondary Pit

Primary Pit

Well No.: 47-081-00719
UTM83-17 Meters
North: 4188184.61
East: 485663.4
Elev.: 749.63 M
Elev.: 2458.78 Ft

Source: Esri, Maxar, Earthstar Geographics, and the GIS User Community

02/28/2025

WW-7
8-30-06



West Virginia Department of Environmental Protection
Office of Oil and Gas
WELL LOCATION FORM: GPS

API: 4708100719 WELL NO.: NEW RIVER CO NEW RIVER 64-AR

FARM NAME: New River Co New River 64 - AR

RESPONSIBLE PARTY NAME: Diversified Production, LLC

COUNTY: Raleigh DISTRICT: Town

QUADRANGLE: Beckley 7.5'

SURFACE OWNER: Meadow Creek Coal Corporation

ROYALTY OWNER: Kerr-McGee Oil & Gas Onshore LP, Diamondback E&P LLC

UTM GPS NORTHING: 4188184.61

UTM GPS EASTING: 485663.4 GPS ELEVATION: 2458.78'

The Responsible Party named above has chosen to submit GPS coordinates in lieu of preparing a new well location plat for a plugging permit or assigned API number on the above well. The Office of Oil and Gas will not accept GPS coordinates that do not meet the following requirements:

- Datum: NAD 1983, Zone: 17 North, Coordinate Units: meters, Altitude: height above mean sea level (MSL) – meters.
- Accuracy to Datum – 3.05 meters
- Data Collection Method:

Survey grade GPS : Post Processed Differential
Real-Time Differential

Mapping Grade GPS : Post Processed Differential
Real-Time Differential

- Letter size copy of the topography map showing the well location.**

I the undersigned, hereby certify this data is correct to the best of my knowledge and belief and shows all the information required by law and the regulations issued and prescribed by the Office of Oil and Gas.

Signature

Chris Veazey - Director of Administration
Title

01/29/25
Date

RECEIVED
Office of Oil and Gas

FEB 07 2025

WV Department of
Environmental Protection

02/28/2025