



Diversified Gas & Oil Corporation
100 Diversified Way
Pikeville KY, 41051

47-081-01502

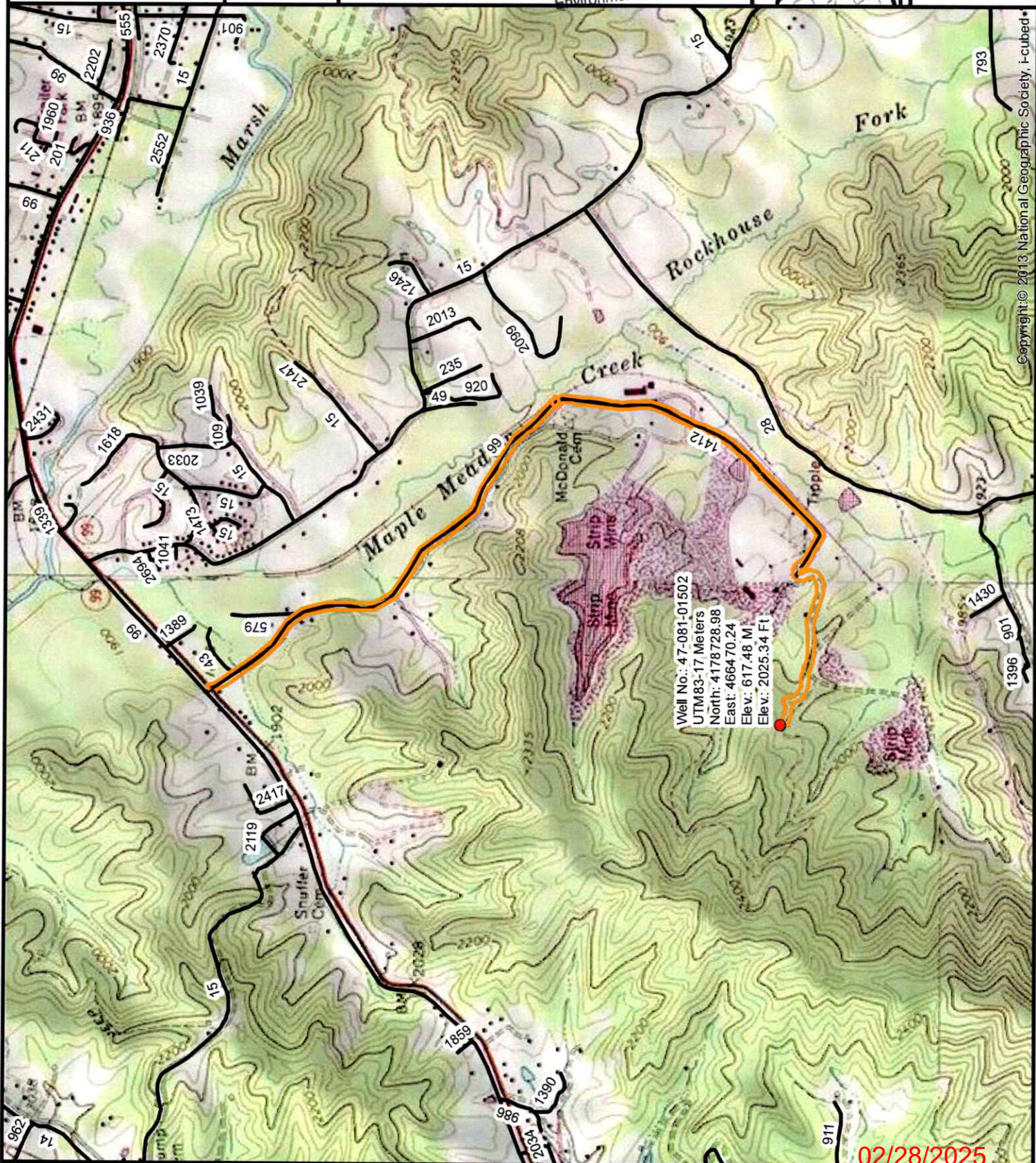
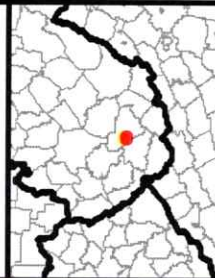
Plugging Map

Legend

- Well
- Access Road
- Pits
- Pad
- Public Roads

RECEIVED
Office Of Oil and Gas
JAN 14 2025

WV Department of
Environmental Protection



Well No.: 47-081-01502
UTM83-17 Meters
North: 4178728.98
East: 466470.24
Elev.: 617.48 M
Elev.: 2025.34 Ft

Copyright © 2013 National Geographic Society, i-cubed*

02/28/2025



Diversified Gas & Oil Corporation
100 Diversified Way
Pikeville KY, 41051

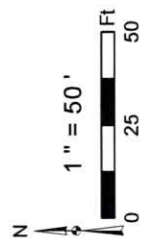
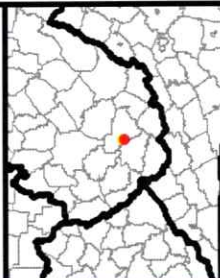
47-081-01502

Plugging Map

Legend

- Well
- ▬ Access Road
- ▨ Pits
- ▭ Pad
- Public Roads

RECEIVED
Office Of Oil and Gas
JAN 14 2025
WV Department of
Environmental Protection



Well No.: 47-081-01502
UTM83-17, Meters
North: 4178728.98
East: 466470.24
Elev.: 617.48 M
Elev.: 2025.34 Ft

Primary Pit

Secondary Pit

Source: Esri, Maxar, Earthstar Geographics, and the GIS User Community

02/28/2025

WW-7
8-30-06



West Virginia Department of Environmental Protection
Office of Oil and Gas
WELL LOCATION FORM: GPS

API: 4708101502 WELL NO.: J N PROCESSING LLC MM-12C

FARM NAME: J&N Processing, LLC

RESPONSIBLE PARTY NAME: Diversified Production, LLC

COUNTY: Raleigh DISTRICT: Trap Hill

QUADRANGLE: Arnett 7.5'

SURFACE OWNER: Maple Meadow Land Company

ROYALTY OWNER: Maple Meadow Mining Co.

UTM GPS NORTHING: 4178728.98

UTM GPS EASTING: 466470.24 GPS ELEVATION: 2025.34

RECEIVED
Office Of Oil and Gas
JAN 14 2025
WV Department of
Environmental Protection

The Responsible Party named above has chosen to submit GPS coordinates in lieu of preparing a new well location plat for a plugging permit or assigned API number on the above well. The Office of Oil and Gas will not accept GPS coordinates that do not meet the following requirements:

- Datum: NAD 1983, Zone: 17 North, Coordinate Units: meters, Altitude: height above mean sea level (MSL) – meters.
- Accuracy to Datum – 3.05 meters
- Data Collection Method:
Survey grade GPS : Post Processed Differential
Real-Time Differential
Mapping Grade GPS : Post Processed Differential
Real-Time Differential
- Letter size copy of the topography map showing the well location.**

RECEIVED
Office Of Oil and Gas
JAN 14 2025
WV Department of
Environmental Protection

I the undersigned, hereby certify this data is correct to the best of my knowledge and belief and shows all the information required by law and the regulations issued and prescribed by the Office of Oil and Gas.

Austin Sutler
Signature

Austin Sutler - Manager Plugging Operations
Title

1/9/25
Date

02/28/2025