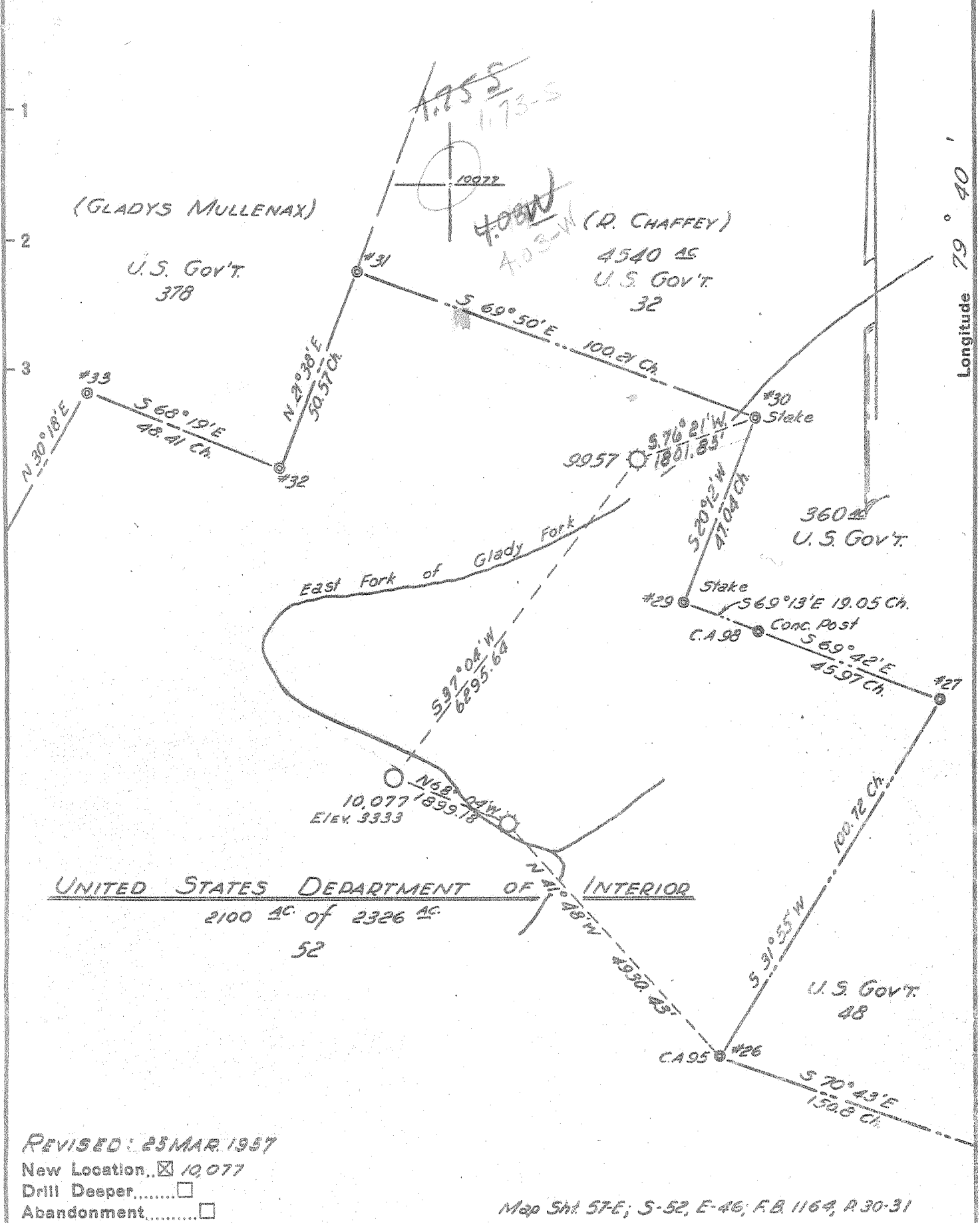


1 2 3

Latitude 38 45

Longitude 79 40



UNITED STATES DEPARTMENT OF INTERIOR  
 2100 AC of 2326 AC  
 52

REVISED: 25 MAR 1957  
 New Location...  10,077  
 Drill Deeper.....   
 Abandonment.....

Map Sh. 57-E; S-52, E-46; F.B. 1164, R.30-31

Company	HOPE NATURAL GAS Co.
Address	CLARKSBURG, W. VA.
Farm	U. S. DEPARTMENT OF INTERIOR
Tract	Acres 2326 Lease No. 62327
Well (Farm) No.	Serial No. 10,077
Elevation (Spirit Level)	3333
Quadrangle	SPRUCE KNOB - NW
County	RANDOLPH District DRY FORK
Engineer	Guy H. Bradley
Engineer's Registration No.	2425
File No.	Drawing No.
Date	FEB. 28, 1957 Scale: 1" = 2000'

STATE OF WEST VIRGINIA  
 DEPARTMENT OF MINES  
 OIL AND GAS DIVISION  
 CHARLESTON

WELL LOCATION MAP  
 FILE NO. TRAN-91

+ Denotes location of well on United States Topographic Maps, scale 1 to 62,500, latitude and longitude lines being represented by border lines as shown.  
 - Denotes one inch spaces on border line of original tracing.

6-6 26' Deep Well



STATE OF WEST VIRGINIA  
DEPARTMENT OF MINES  
OIL AND GAS DIVISION 8

Quadrangle SPRUCE KNOBB

Permit No. RAND-91

WELL RECORD

Oil or Gas Well Gas  
(KIND)

Company Hope Natural Gas Company  
Address Clarksburg, W. Va.  
Farm U.S. Dept. of Interior Acres 2326  
Location (waters) \_\_\_\_\_  
Well No. 10077 Elev. 3333'  
District Dry Fork, County Randolph,  
The surface of tract is owned in fee by \_\_\_\_\_  
Address \_\_\_\_\_  
Mineral rights are owned by \_\_\_\_\_  
Address \_\_\_\_\_  
Drilling commenced ~~XXXX~~ April 3, 1957  
Drilling completed Sept. 12, 1957  
Date Shot Not From \_\_\_\_\_ To \_\_\_\_\_  
With \_\_\_\_\_  
Open Flow \_\_\_\_\_/10ths Water in \_\_\_\_\_ Inch  
\_\_\_\_\_ /10ths Merc. in \_\_\_\_\_ Inch  
Volume 292 M \_\_\_\_\_ Cu. Ft.  
Rock Pressure \_\_\_\_\_ lbs. \_\_\_\_\_ hrs.  
Oil None \_\_\_\_\_ bbls., 1st 24 hrs.  
WELL ACIDIZED No  
WELL FRACTURED 9-18-57 ✓

Casing and Tubing	Used in Drilling	Left in Well	Packers
Size			Kind of Packer
16.			
13.	73	73	
10.	458	458	Size of
8 3/4	1561	1561	
6 3/4	5467	5467	Depth set
5 3/16			
3.			Perf. top
2.			Perf. bottom
Liners Used			Perf. top
			Perf. bottom

CASING CEMENTED \_\_\_\_\_ SIZE \_\_\_\_\_ No. Ft. \_\_\_\_\_ Date \_\_\_\_\_  
8" cemented with 30 bags  
7" " " 60 bags uniflo  
COAL WAS ENCOUNTERED AT \_\_\_\_\_ FEET \_\_\_\_\_ INCHES  
None FEET \_\_\_\_\_ INCHES FEET \_\_\_\_\_ INCHES  
FEET \_\_\_\_\_ INCHES FEET \_\_\_\_\_ INCHES

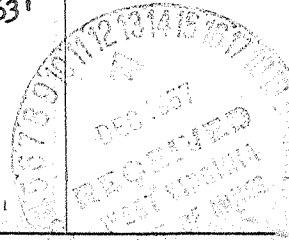
RESULT AFTER TREATMENT 2,014 M

ROCK PRESSURE AFTER TREATMENT 1950#

Fresh Water 30' 80' Feet Salt Water 1645' Feet

Formation	Color	Hard or Soft	Top	Bottom	Oil, Gas or Water	Depth	Remarks
Clay			0	15			
Shale			15	27			
Lime			27	390	Water	30	Fresh
Sand			390	431		80	"
Lime			431	565			
Sand			565	597			
Slate & Shells			597	624			
Sand			624	637			
Slate & Shells			637	706			
Lime			706	1157			
Broken Lime			1157	1696	Water	1645'	Salt
Slate & Shells			1696	1754			
Lime			1754	1785			
Slate & Shells			1785	1895			
Shale			1895	2195			
Lime			2195	2230			
Slate & Shells			2230	3542			
Shale			3542	3940			
Lime			3940	3995			
Shale			3995	4230			
Shale			4230	4728			
Lime			4728	4933			
Shale			4933	4963	Gas pocket	4963'	
Lime			4963	5005			
Shale			5005	5136			
TULLY			5136	5146			
Brown Shale			5146	5376			
Black Shale - <u>Marcellus?</u>			5376	5427			
Brown Break - <u>Tully</u>			5427				
ONONDAGA LIME			5427	5466			

5427  
3333  
2074



Formation	Color	Hard or Soft	Top $\delta$	Bottom	Oil, Gas or Water	Depth Found	Remarks
✓CHERT			5466	5616'	Gas	5496'	
✓ORISKANY			5616	5803	Gas	5734'	5790'
✓HELDERBERG			5803	5944			
TOTAL DEPTH				5968'			
Bottom				(485)			
68' chert					5616		
McCord					3803		
					2253		

December 11, 1957

Date \_\_\_\_\_, 19\_\_\_\_

APPROVED \_\_\_\_\_, Owner

Hope Natural Gas Company

By \_\_\_\_\_ (Title)