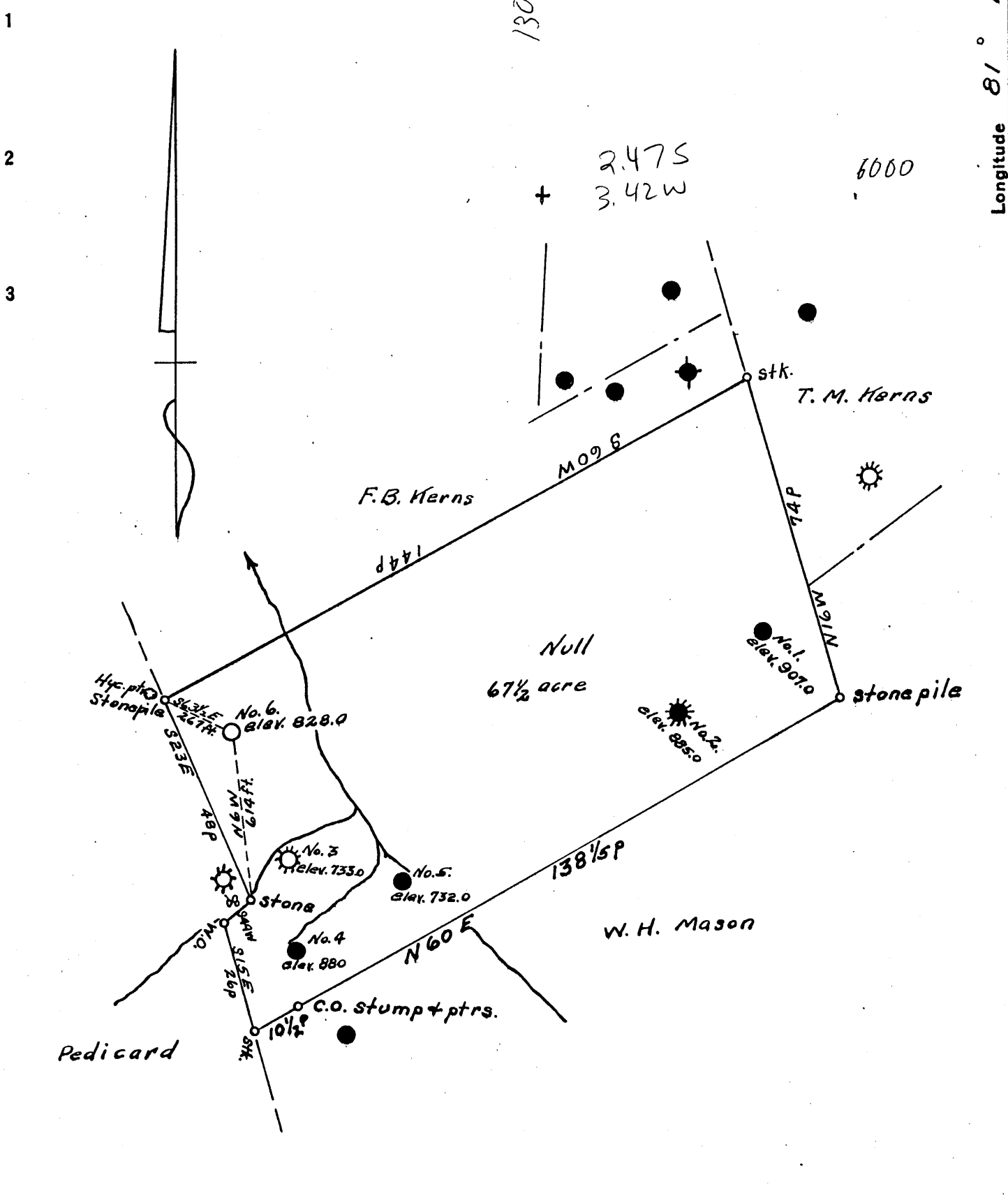


0 1 2 3

Latitude 39° 10'

Longitude 81° 10'



Company Bristol Oil & Gas Co.
 Address 2112 Oliver Bldg. Pittsburgh, Penna.
 Farm _____
 Tract _____ Acres 67 1/2 Lease No. _____
 Well (Farm) No. Six Serial No. _____
 Elevation (Spirit Level) 828.0
 Quadrangle Harrisville
 County Ritchie District Grant
 Engineer O. W. Barnhart.
 Engineer's Registration No. C.S.P.C.
 File No. _____ Drawing No. _____
 Date Aug. 26, 1936 Scale 1" = 30p

STATE OF WEST VIRGINIA
 DEPARTMENT OF MINES
 OIL AND GAS DIVISION
 CHARLESTON

WELL LOCATION MAP
 FILE NO. RIT - 483

+ Denotes location of well on United States Topographic Maps, scale 1 to 62,500, latitude and longitude lines being represented by border lines as shown.
 - Denotes one inch spaces on border line of original tracing.

RIT-483

Grant District, Ritchie County, W. Va.

By Mellon-Pellock Oil Co. (New Mellon Oil & Gas Corp.), 2112 Oliver Bldg., Pittsburgh, Pa. BTL 1370L OIL & GAS

On 73 acres.

Elevation.....

Drilling completed Aug. 14, 1924. (to 1597½').

Well drilled deeper Sept. 8, 1936 (to 1830') to Oct. 5, 1936.

Conductor, 14"; 10" casing, 300'; 8½", 865'; 6½", 1256'; 2" tubing, 1595'

Oil well. Completion (deepening) reported to Dept. of Mines (filed)

June 30, 1937.

Record to RCF from Mrs. Griffith 7-24-37.

	Top.	Bottom.
Sand (gas and water, 610')	600	620
Big Red	620	670
Goble	873	886
Black slate and shells	886	900
Slate	900	1060
Sand	1060	1160
Slate	1160	1245
Sand	1245	1335
Black slate and shells	1335	1491
Sand (gas, 1495-1500')	1491	1540
Break	1540	1582
Sand (oil, 1582-1594')	1582	1597½
Total depth		1597½

Finished August 14, 1924.

Tapped with Flood Nipple top of pay.

Gas turned in line September 16, 1924.

Not shot.

Well drilled deeper September 8, 1936.

Marion Sand	1582	1649
Big Lime	1649	1729
Keener Sand	1729	1744
Big Injun Sand (light show of oil, 1791-1796'; gas, 1805-1815'; gas tested 5/10 at 1809'; 100/10 at 1815' before hole filled with oil; oil at 1809-1815'; good sand from 1805-1820'; well flowed 83 inches in 100-gal. tank through 6½" casing in the first 48 hrs.)	1744	1827
Slate	1827	
Total depth		1830

Completed October 5, 1936 (Deepening).

WELL RECORD

No. 6 Well on Null Farm - 73 acre lease - Grant District, Ritchie County, W.Va.

	TOP	THICKNESS	BOTTOM
Conductor		14	
10" casing		300	
Sand	600	20	620
Gas and Water		610	
Big Red	620	50	670
9" Casing		865	
Goble	873	13	886
Black Slate & Shells	886	14	900
Slate	900	160	1060
Sand	1060	120	1180
Slate	1180	45	1245
Sand	1245	90	1335
6 5/8" Casing	1256		
Black Slate & Shells	1335	156	1491
Sand	1491		1540
Gas	1495	105	1500
Brake	1540	42	1582
Sand	1582	15 $\frac{1}{2}$	1597 $\frac{1}{2}$
Oil	1582	12	1594
TOTAL DEPTH			1597 $\frac{1}{2}$

Finished August 14th, 1924
 Tubed with Flood Nipple top of pay
 Gas turned in line September 16th, 1924 -
 NOT SHOT

CASING RECORD

300 ft. 10"	32 $\frac{1}{2}$ #
865 ft. 8 1/4"	24 $\frac{1}{2}$ #
1256 ft. 6 5/8"	17#
1595 ft. 2"	4 $\frac{1}{2}$ #



WEST VIRGINIA DEPARTMENT OF MINES
OIL AND GAS DIVISION

WELL RECORD

Handwritten notes: 1500 ft 7 hrs 62

Permit No. 085-483 Oil or Gas Well OIL
(Kind)

Company Mellon-Pollock Oil (Now-NOLLEM OIL & GAS CORP.)
 Address 2112 Oliver Building, Pittsburgh, Pa.
 Farm Null Acres 73
 Location (waters) _____
 Well No. 6 Elev. 125'
 District Grant County Ritchie
 The surface of tract is owned in fee by _____
 Address _____
 Mineral rights are owned by _____
 Address _____
 Drilling commenced _____
 Drilling completed Aug. 14, 1924.
 Date shot 12-8-36 Depth of shot _____
 Open Flow /10ths Water in _____ Inch
 /10ths Merc. in _____ Inch
 Volume _____ Cu. Ft.
 Rock Pressure _____ lbs. _____ hrs.
 _____ bbls., 1st 24 hrs.
 Fresh water _____ feet _____ feet
 Salt water _____ feet _____ feet

Casing and Tubing	Used in Drilling	Left in Well	Packers
Size			Kind of Packer
16			
13			
10	300'		Size of
8 1/4	865		
6 5/8	1256		Depth set
5 3/16			
3			Perf. top
2	1595		Perf. bottom
Liners Used			Perf. top
			Perf. bottom

CASING CEMENTED _____ SIZE _____ No. FT. _____ Date _____
 COAL WAS ENCOUNTERED AT _____ FEET _____ INCHES
 _____ FEET _____ INCHES FEET _____ INCHES
 _____ FEET _____ INCHES FEET _____ INCHES

Formation	Color	Hard or Soft	Top	Bottom	Oil Gas or Water	Depth Found	Remarks
Conductor			14	14			
" Casing			300	300			
nd			600	620			
s & water				610			
g Red			620	670			
casing				865			
ble			873	886			
ack State & Shells			886	900			
ate			900	1060			
nd			1060	1180			
ate			1180	1245	Sand 1245 -	1335	
5/8" Casing			1256				
ack Slate & Shells			1335	1491			
nd			1491	1540			
s			1495	1500			
ake			1540	1582			
nd			1582	1597 1/2			
l			1582	1594			
TOTAL DEPTH				1597 1/2			
inished August 14, 1924.							
bed with Flood Nipple Top of pay,							
s turned in line September 16, 1924.							
NOT SHOT							
LL DRILLED DEEPER SEPTEMBER 8th, 1936							
xon Sand			1582	1649			
g Line			1649	1729			
ner Sand			1729	1744	Light show of oil 1791 to 1796		
jun Sand			1744	1827	Light show of oil 1791 to 1796		
					Gas 1805 to 1815 ft. Gas tested 5/10 at 1809'		
					100/10 at 1815' before hole filled with oil		
					Oil at 1809 to 1818 ft. Good sand from 1805' to		
					1820'. Well flowed 83 inches in 100 barrel		
					tank, through 6-5/8" casing in the first 48hrs		
ate							
TOTAL DEPTH				1830			
pleted - October 5, 1936.							

