

8501821 P

WW-7  
8-30-06



West Virginia Department of Environmental Protection  
Office of Oil and Gas  
**WELL LOCATION FORM: GPS**

API: 47-085-01821 WELL NO.: Davis # 1

FARM NAME: Kenneth Davis

RESPONSIBLE PARTY NAME: J F Deem

COUNTY: Ritchie DISTRICT: Union

QUADRANGLE: Auburn

SURFACE OWNER: Kenneth Davis

ROYALTY OWNER: Kenneth Davis

UTM GPS NORTHING: 4,330,573

UTM GPS EASTING: 511,196 GPS ELEVATION: 299M 980'

The Responsible Party named above has chosen to submit GPS coordinates in lieu of preparing a new well location plat for a plugging permit or assigned API number on the above well. The Office of Oil and Gas will not accept GPS coordinates that do not meet the following requirements:

1. Datum: NAD 1983, Zone: 17 North, Coordinate Units: meters, Altitude: height above mean sea level (MSL) – meters.
2. Accuracy to Datum – 3.05 meters
3. Data Collection Method:

Survey grade GPS \_\_\_\_\_ : Post Processed Differential \_\_\_\_\_  
Real-Time Differential \_\_\_\_\_

Mapping Grade GPS X : Post Processed Differential \_\_\_\_\_  
Real-Time Differential \_\_\_\_\_

4. Letter size copy of the topography map showing the well location.

I the undersigned, hereby certify this data is correct to the best of my knowledge and belief and shows all the information required by law and the regulations issued and prescribed by the Office of Oil and Gas.

J F Deem  
Signature

Owner  
Title

8-5-13  
Date

RECEIVED  
Office of Oil and Gas

AUG 27 2013

WV Department of  
Environmental Protection

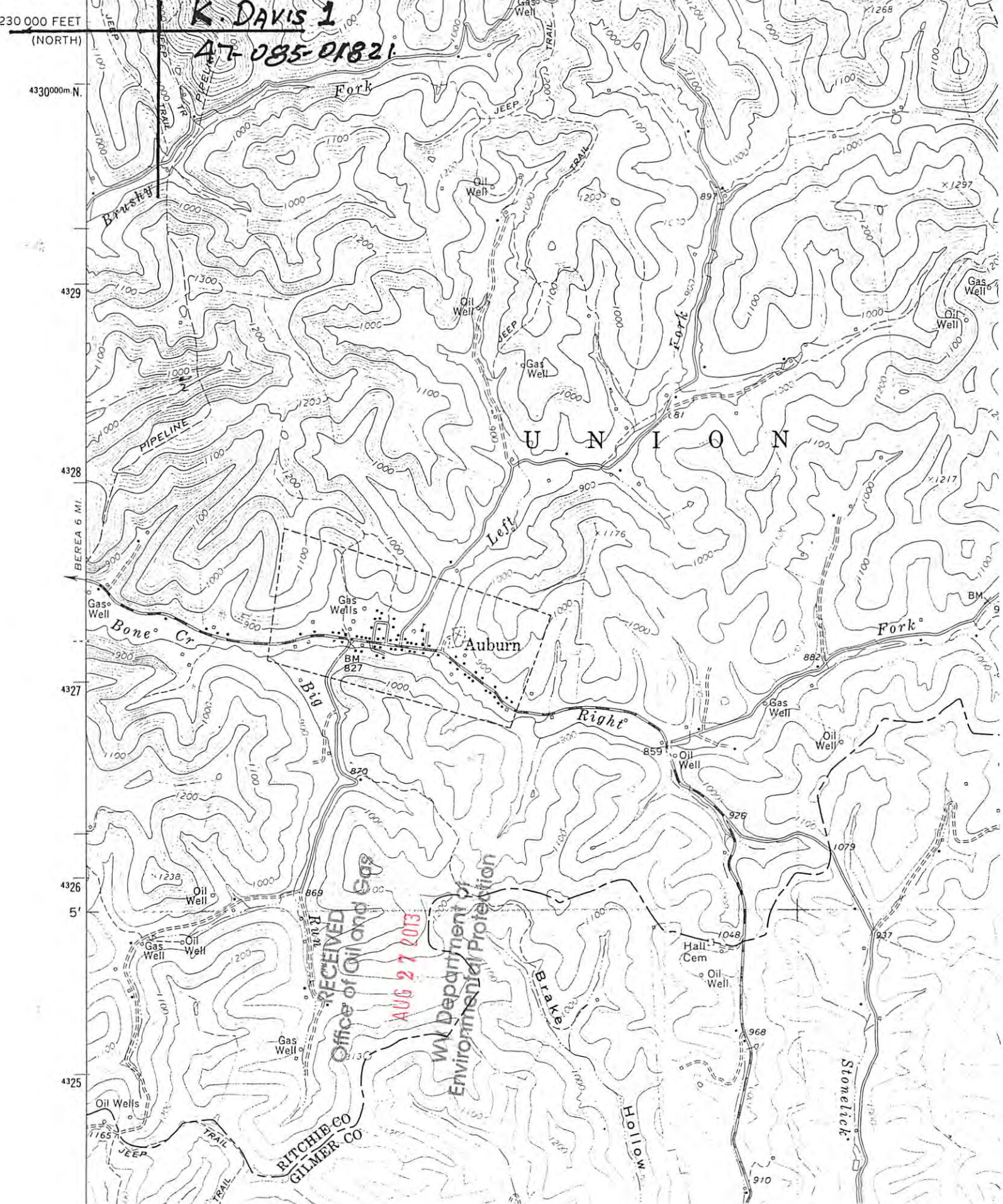
111 NW  
LLMAN

DEPARTMENT OF THE INTERIOR  
GEOLOGICAL SURVEY

8501821A

STATE

80° 52' 30" 5110000 E. 512 513 1 620 000 FEET (NORTH) 514 50' 515  
39° 07' 30"



K. DAVIS 1  
AT-085-01821

U N I O N

RECEIVED  
Office of Oil and Gas  
AUG 27 2013  
U.S. Department of  
Environmental Protection

RITCHIE CO  
GILMER CO