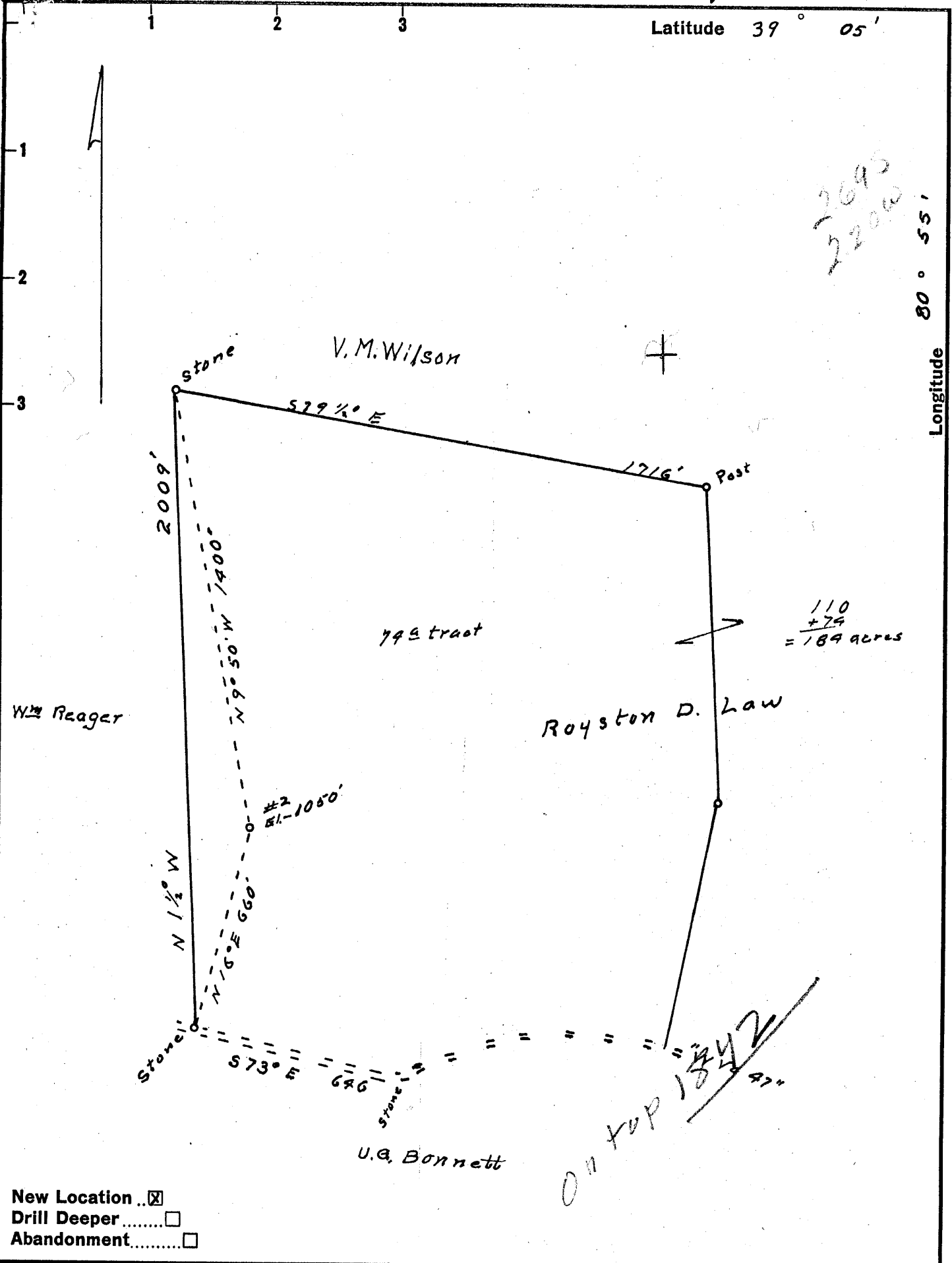


Latitude 39° 05'

Longitude 80° 55'

2095
2200



Company Evelyn Oil & Gas

Address Parker Apt. Building, Parkersburg, W. Va.

Farm Royston D Law

Tract 79.9 Acres 184 Lease No. _____

Well (Farm) No. 2 Serial No. _____

Elevation (Spirit Level) 1050'

Quadrangle Holbrook SW

County Ritchie District Murphy

Engineer Robert R. Anderson
by O. Meredith

Engineer's Registration No. 296

File No. _____ Drawing No. _____

Date Apr. 24 59 Scale 1 in = 400'

STATE OF WEST VIRGINIA
DEPARTMENT OF MINES
OIL AND GAS DIVISION
CHARLESTON

WELL LOCATION MAP
FILE NO. Rit-1875

+ Denotes location of well on United States Topographic Maps, scale 1 to 62,500, latitude and longitude lines being represented by border lines as shown.

- Denotes one inch spaces on border line of original tracing.

BERRY TRACT



STATE OF WEST VIRGINIA
DEPARTMENT OF MINES
OIL AND GAS DIVISION / 0

Quadrangle Halbrook

Permit No. RIT-1875

WELL RECORD

Oil or Gas Well Oil & Gas
(KIND)

Company Hartman Oil and Gas Company
Address 418 Avery Street, Parkersburg, W. Va.
Farm R. D. Law Acres 184

Location (waters) Grass Run
Well No. 2 Elev. 1050'
District Murphy County Ritchie

The surface of tract is owned in fee by R. D. Law
Address Burnthouse, W. Va.

Mineral rights are owned by R. D. Law et al
Address Burnthouse, W. Va.

Dyilling commenced May 3, 1958

Drilling completed June 13, 1958

Date Shot From To

With

Open Flow /10ths Water in Inch

/10ths Merc. in Inch

Volume Cu. Ft.

Rock Pressure lbs. hrs.

Oil 1 bbls., 1st 24 hrs.

WELL ACIDIZED

WELL FRACTURED 7-9-58 with 600 bbls. of oil & 10,000 lbs. of sand

Casing and Tubing	Used in Drilling	Left in Well	Packers
Size			Kind of Packer
16			
13	13		
10			Size of
8 3/4	1050	485	
6 3/4	1970		Depth set
5 3/16	2474	2470	
3			Perf. top
2			Perf. bottom
Liners Used			Perf. top
			Perf. bottom

CASING CEMENTED 5 1/2 SIZE 100 No. Ft. 6-14-58 Date

COAL WAS ENCOUNTERED AT FEET INCHES
FEET INCHES FEET INCHES
FEET INCHES FEET INCHES

RESULT AFTER TREATMENT

ROCK PRESSURE AFTER TREATMENT

Fresh Water Feet Salt Water Feet

Formation	Color	Hard or Soft	Top	Bottom	Oil, Gas or Water	Depth	Remarks
Red Rock		0	32				
Lime		32	40				
Slate & Shells		40	82				
Broken Lime		82	125				
Sand		125	165				
Red Rock		165	220				
Pink Rock		220	226				
Blue Lime		226	231				
Sand		231	252				
Pink Rock		252	270				
Slate		270	295				
Sand		295	318				
Slate & Shells		318	352				
Red Rock		352	445				
Sand		445	492				
Red Rock		492	555				
Slate & Shells		555	770				
Red Rock		770	870				
Slate & Shells		870	900				
Pink Rock		900	923				
Slate & Shells		923	948				
Red Rock		948	1034				
Blue Lime		1034	1039				
Slate & Shells		1039	1058				
B. D. Sand		1058	1085				
Slate & Shells		1085	1190				
Sand		1190	1312				
Slate & Shells		1312	1460				
Blackslate		1460	1472				
Gritty Slate		1472	1576				

*Refracted
9-2-58*



(over)

Formation	Color	Hard or Soft	Top 10	Bottom	Oil, Gas or Water	Depth Found	Remarks
Blackslate			1576	1585			
Gritty Lime			1585	1604			
Blackslate			1604	1624			
Gritty Lime			1624	1665			
Salt Sand			1665	1728	Gas	1684	
Slat			1728	1732			
Broken Sand Lime			1732	1870	Gas	1857	
Maxon Sand			1870	1895			
Slate			1895	1932			
Little Lime			1932	1958			
Pencil Cave			1958	1966			
Big Lime			1966	2043			
Keener Sand			2043	2078			
Injun Sand			2078	2118	Gas Show	2085	
Slate			2118	2138			
Slate & Shells			2138	2168			
Gritty Lime			2168	2220			
Slate & Sand			2220	2352			
Gritty Lime			2352	2400			
Shale			2400	2437			
Berea Sand			2437	2466	Gas	2448	
					Oil & Gas	2457	
Gantz Sand			2466	2470			
				2469n	TOTAL DEPTH		

Date July 17, 1958

APPROVED Frederick Oil & Gas Co., Owner

By E. E. Hartman
(Title)