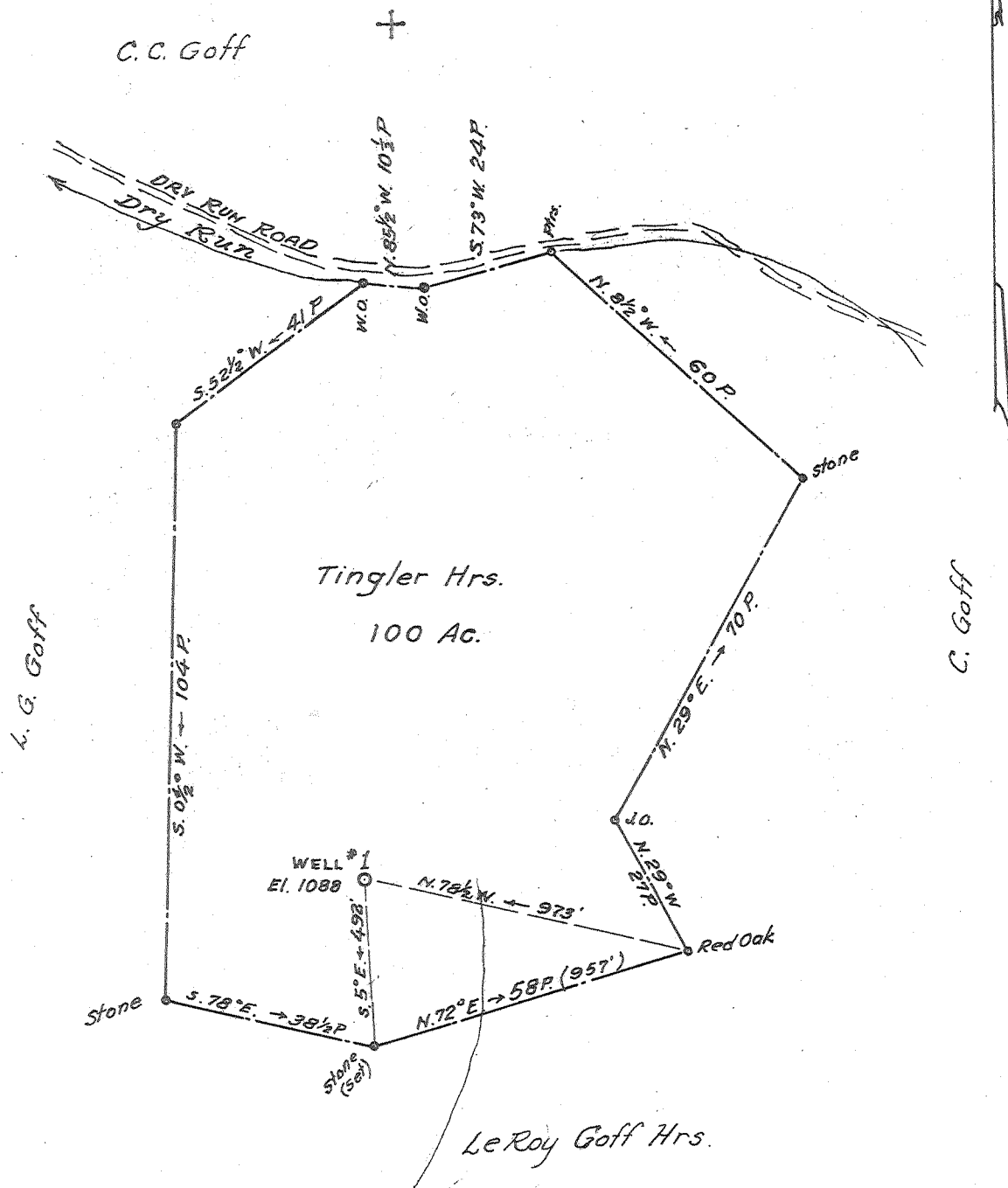


Latitude 39° 05'

Longitude 80° 55'



New Location
 Drill Deeper
 Abandonment

Company Tingler Oil & Gas Co. (H.L. Ice, Agent)
 Address 2022 19th St, Parkersburg, W. Va.
 Farm Tingler Hrs.
 Tract 100 Acres _____ Lease No. _____
 Well (Farm) No. 1 Serial No. _____
 Elevation (Spirit Level) 1088
 Quadrangle Holbrook SW
 County Ritchie District Murphy
 Engineer Parker E. Peters
W.P.T.
 Engineer's Registration No. 485
 File No. _____ Drawing No. _____
 Date July 13, 1960 Scale 1" = 30 P.

STATE OF WEST VIRGINIA
 DEPARTMENT OF MINES
 OIL AND GAS DIVISION
 CHARLESTON

WELL LOCATION MAP
 FILE NO. Rit-2220

+ Denotes location of well on United States Topographic Maps, scale 1 to 62,500, latitude and longitude lines being represented by border lines as shown.
 - Denotes one inch spaces on border line of original tracing.