

Latitude 39° 05'

Longitude 81° 00'

0.400
2.1200

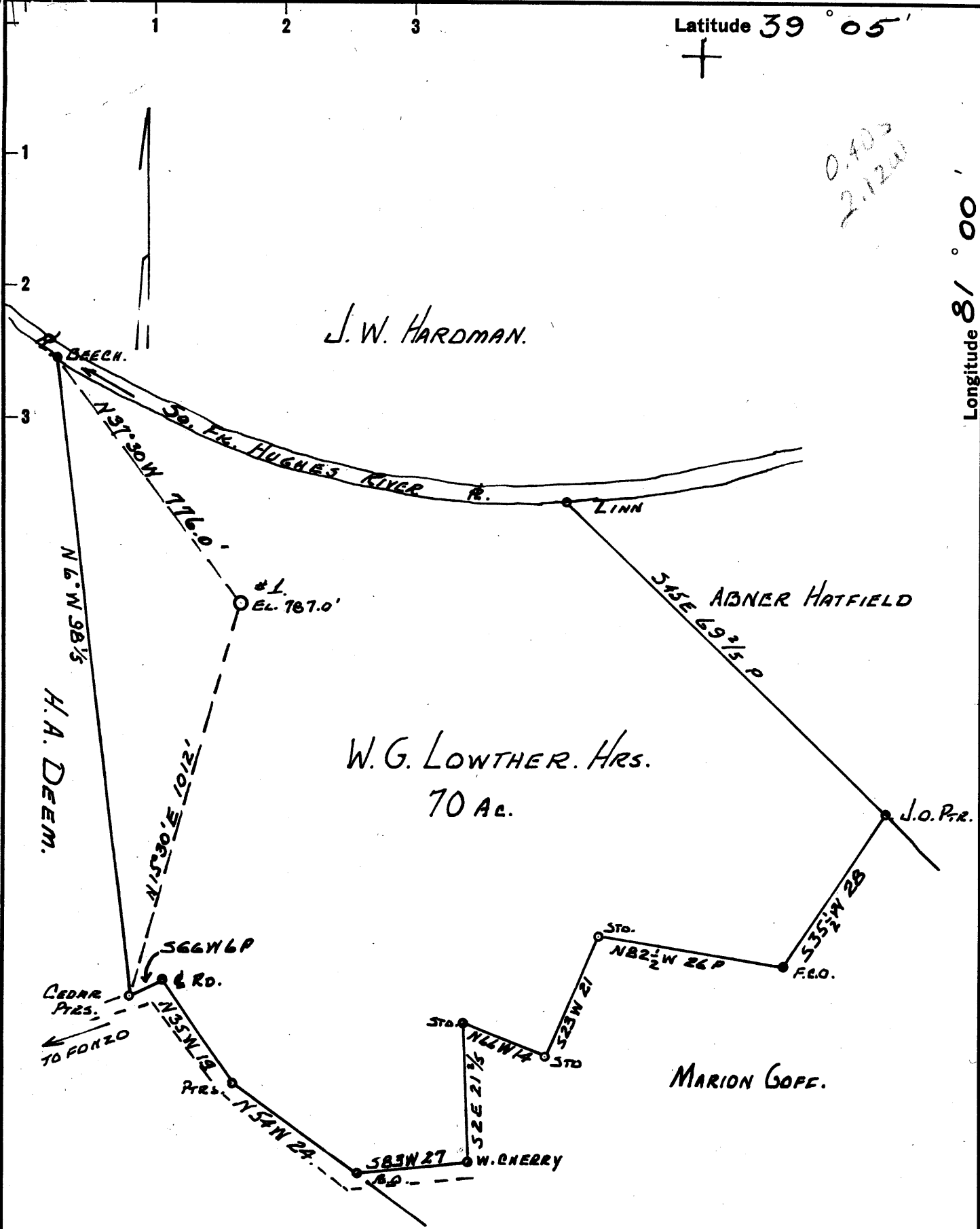
J. W. HARDMAN.

W. G. LOWTHER. HRS.
70 AC.

ABNER HATFIELD

MARION COPE.

W. G. LOWTHER, RT. 1, HAZEL GREEN IS PRINCIPAL
OWNER OF OIL & GAS RIGHTS



- New Location
- Drill Deeper
- Abandonment

Company W. L. MEADOWS, & ROSS BRUNNER
 Address 314 UNION TRUST BLDG. PARKERSBURG, W.V.
 Farm W. G. LOWTHER.
 Tract _____ Acres 70 Lease No. _____
 Well (Farm) No. 1 Serial No. _____
 Elevation (Spirit Level) 787.0'
 Quadrangle HARRISVILLE SE
 County Ritchie District Murphy
 Engineer JOHN W. HAMILTON
 Engineer's Registration No. 2274
 File No. _____ Drawing No. _____
 Date 3-23-1961 Scale 1" = 20 P.

STATE OF WEST VIRGINIA
 DEPARTMENT OF MINES
 OIL AND GAS DIVISION
 CHARLESTON

WELL LOCATION MAP
 FILE NO. Rit-2342

+ Denotes location of well on United States Topographic Maps, scale 1 to 62,500, latitude and longitude lines being represented by border lines as shown.
 - Denotes one inch spaces on border line of original tracing.



STATE OF WEST VIRGINIA
DEPARTMENT OF MINES
OIL AND GAS DIVISION 13

Quadrangle Harrisville

Permit No. RIT 2342

WELL RECORD

Oil or Gas Well Gas

Company W.L.Meadows and Ross Brunner
 Address 314 Union Trust Bldg., Parkersburg, W.Va.
 Farm W.G.Lowther Acres 70
 Location (waters) So. Rork Hughes River
 Well No. 1 Elev. 787
 District Murphy County Ritchie
 The surface of tract is owned in fee by _____
 Address _____
 Mineral rights are owned by W. G. Lowther
 Address Rt. 1. Hazel Gn.
 Drilling commenced May 1, 1961
 Drilling completed June 6, 1961
 Date Shot _____ From _____ To _____
 With _____
 Open Flow _____ /10ths Water in _____ Inch
 _____ /10ths Merc. in _____ Inch
 Volume _____ Cu. Ft.
 Rock Pressure _____ lbs. _____ hrs.
 Oil _____ bbls., 1st 24 hrs.
 WELL ACIDIZED _____

Casing and Tubing	Used in Drilling	Left in Well	Packers
Size			
16			Kind of Packer
13			
10	274	None	Size of
8 1/4	928'	None	
6 5/8			Depth set
5 3/16			
4 1/2"	2350	2350	Perf. top 1905
2			Perf. bottom 1911
Liners Used			Perf. top _____
			Perf. bottom _____

CASING CEMENTED 4 1/2 SIZE 2350 No. Ft. 5/6/61 Date
150 sx. 10 sx jel- 10sx baroid- 100 gal coal-
NO COAL
 COAL WAS ENCOUNTERED AT _____ FEET _____ INCHES
 _____ FEET _____ INCHES FEET _____ INCHES
 _____ FEET _____ INCHES FEET _____ INCHES

WELL FRACTURED 6/12/61 627 bbl water-28,000 lb 20-40 mesh sand 150 lb. walnut hulls

RESULT AFTER TREATMENT 475 mol- 4 bbl oil

ROCK PRESSURE AFTER TREATMENT 640lb. 24 hrs

Fresh Water None Feet _____ Salt Water None Feet _____

Formation	Color	Hard or Soft	Top	Bottom	Oil, Gas or Water	Depth	Remarks
Sand			0	8			
Red Rock			8	38			
Slate	Blue		38	72			
Red Rock			72	88			
Slate	Blue		88	104			
Red Rock			104	137			
Slate	Blue		137	197			
Red Rock			197	254			
Blue Rock			254	267			
Red rock			267	327			
Sand	Gray		327	362			
Blue Slate			362	368			
Lime Shells			368	388			
Red Rock			388	446			
Lime Shells			446	460			
Slate	Blue		460	508			
Lime Shells			508	525			
Red Rock			525	550			
Lime Shells			550	559			
Red Rock			559	565			
Lime Shells			565	574			
Red Rock			574	597			
Slate	Blue		597	630			
Sand			630	641			
Lime Shells			641	649			
Slate	Blue		649	665			
Lime Shells			665	676			
Slate	Blue		676	732			
Sand			732	738			
Blue Slate			738	745			

Formation	Color	Hard or Soft	Top ¹³	Bottom	Oil, Gas or Water	Depth Found	Remarks
ed Rock			745	763			
and			763	769			
ed Rock			769	865			
lue Slate			865	870			
ime Shells			870	875			
ed Rock			875	924			
lue Slate			924	941			
and			941	962			
lue Slate			962	974			
ed Rock			974	1024			
ime Shells			1024	1034			
ed Rock			1034	1060			
ime Shells			1060	1079			
and			1079	1104			
ime Shells			1104	1112			
late			1112	1149			
late & Shells			1149	1205			
and			1205	1280			
late & Shells			1280	1295			
and			1295	1320			
late	Black		1320	1330			
and			1330	1380			
late & Shells			1380	1540			
lme	Dark		1540	1570			
and			1570	1700			
lme			1700	1710			
and			1710	1728			
lme			1728	1773			
encil Cave			1773	1776			
g Lime			1776	1895			
g Injun Sand			1895	1930	Oil & Gas Show		
late & Shells	Blue		1930	2285			
rea Sand			2285	2290	Oil Show		
late & Shells			2290	2350	T. D.		

Date Aug-29- 1961

APPROVED W. L. Meadows & Ross Burns, Owner

By Russell G. Bull
dy [Signature]