

WW-7  
8-30-06



West Virginia Department of Environmental Protection  
Office of Oil and Gas

WELL LOCATION FORM: GPS

API: 47-085-04149 WELL NO.: Leeson 1

FARM NAME: Southfork Sportsman Assoc., Inc.

RESPONSIBLE PARTY NAME: J. F. Deem

COUNTY: Ritchie DISTRICT: Union

QUADRANGLE: Auburn

SURFACE OWNER: Southfork Sportsman Assoc. Inc.

ROYALTY OWNER: \_\_\_\_\_

UTM GPS NORTHING: 4,331,389

UTM GPS EASTING: 508,981 GPS ELEVATION: 842 ft

The Responsible Party named above has chosen to submit GPS coordinates in lieu of preparing a new well location plat for a plugging permit or assigned API number on the above well. The Office of Oil and Gas will not accept GPS coordinates that do not meet the following requirements:

1. Datum: NAD 1983, Zone: 17 North, Coordinate Units: meters, Altitude: height above mean sea level (MSL) – meters.
2. Accuracy to Datum – 3.05 meters
3. Data Collection Method:  
Survey grade GPS \_\_\_\_: Post Processed Differential \_\_\_\_  
Real-Time Differential \_\_\_\_  
Mapping Grade GPS X: Post Processed Differential \_\_\_\_  
Real-Time Differential \_\_\_\_

RECEIVED  
Office of Oil and Gas

FEB 10 2014

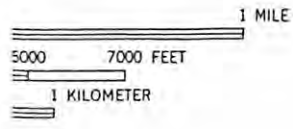
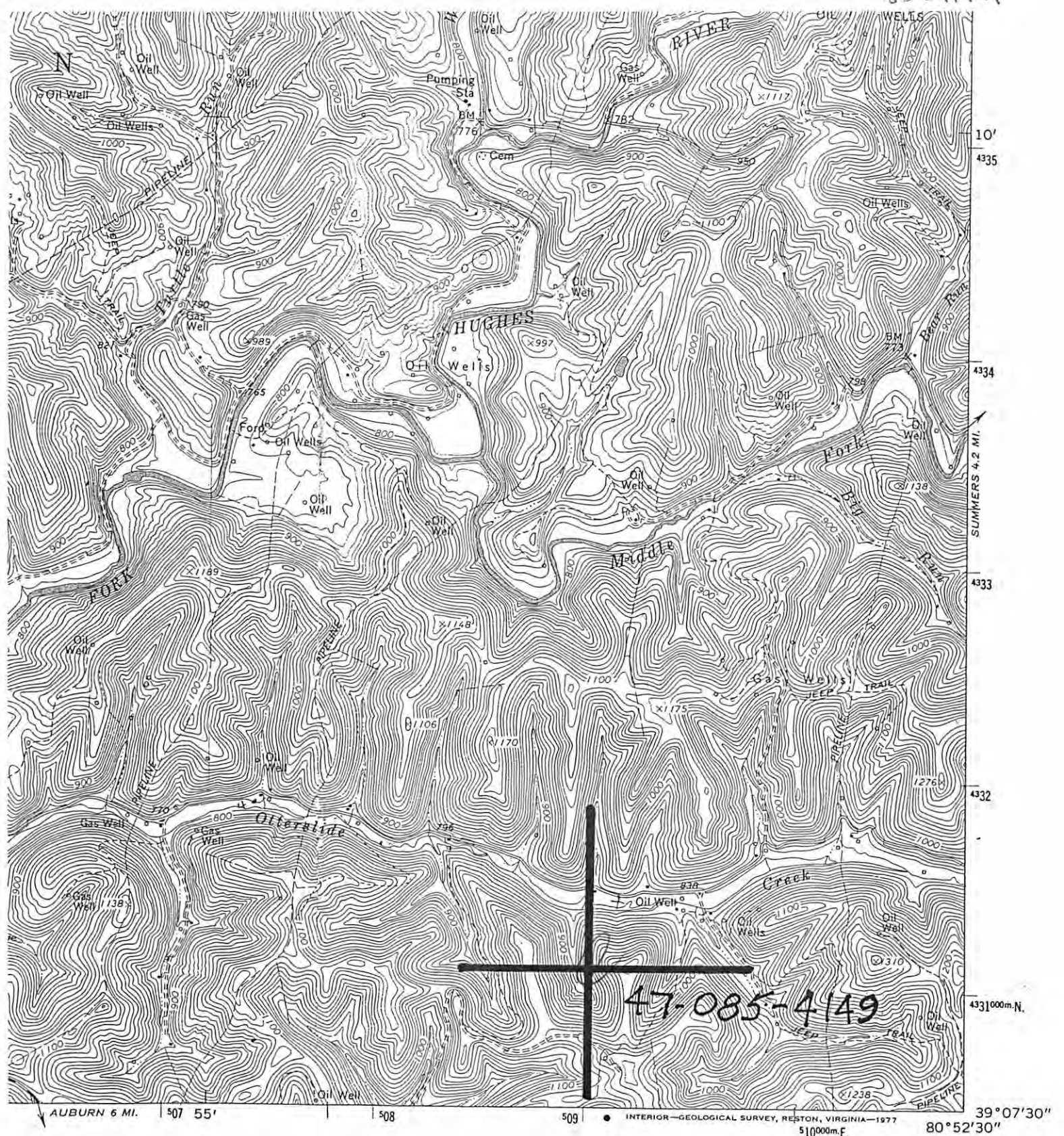
WV Department of  
Environmental Protection

4. Letter size copy of the topography map showing the well location.

I the undersigned, hereby certify this data is correct to the best of my knowledge and belief and shows all the information required by law and the regulations issued and prescribed by the Office of Oil and Gas.

J. F. Deem                      Operator                      2/10/14  
Signature                                      Title                                      Date

8504149P



The Engineering Supply Co.  
 1316 12th St.  
 Parkersburg, WV 26101



RECEIVED  
 Office of Oil and Gas  
 ROAD CLASSIFICATION  
 Medium-duty \_\_\_\_\_ Light-duty \_\_\_\_\_  
 Unimproved dirt =====  
 WV Department of  
 Environmental Protection  
 PULLMAN, W. VA.  
 NW/4 HOLBROOK 15' QUADRANGLE  
 N3907.5—W8052.5/7.5

CARDS  
 22092  
 ON REQUEST