

8505058P

CK 30140
10000

WW-7
8-30-06



West Virginia Department of Environmental Protection
Office of Oil and Gas
WELL LOCATION FORM: GPS

API: 47-085-05058 WELL NO.: Nobel Rogers #1

FARM NAME: Rogers Lease

RESPONSIBLE PARTY NAME: PDC Mountaineer LLC.

COUNTY: Ritchie DISTRICT: Grant

QUADRANGLE: Petroleum 7.5' Quad.

SURFACE OWNER: Heartwood Forestland Fund IV Ltd. Partnership

ROYALTY OWNER: Nobel Rogers

UTM GPS NORTHING: 4,331,638.8

UTM GPS EASTING: 476,507.9 GPS ELEVATION: 204.2m 670'

The Responsible Party named above has chosen to submit GPS coordinates in lieu of preparing a new well location plat for a plugging permit or assigned API number on the above well. The Office of Oil and Gas will not accept GPS coordinates that do not meet the following requirements:

1. Datum: NAD 1983, Zone: 17 North, Coordinate Units: meters, Altitude: height above mean sea level (MSL) – meters.
2. Accuracy to Datum – 3.05 meters
3. Data Collection Method:

Survey grade GPS : Post Processed Differential **RECEIVED**
Real-Time Differential **Office of Oil and Gas**

Mapping Grade GPS X: Post Processed Differential X
Real-Time Differential

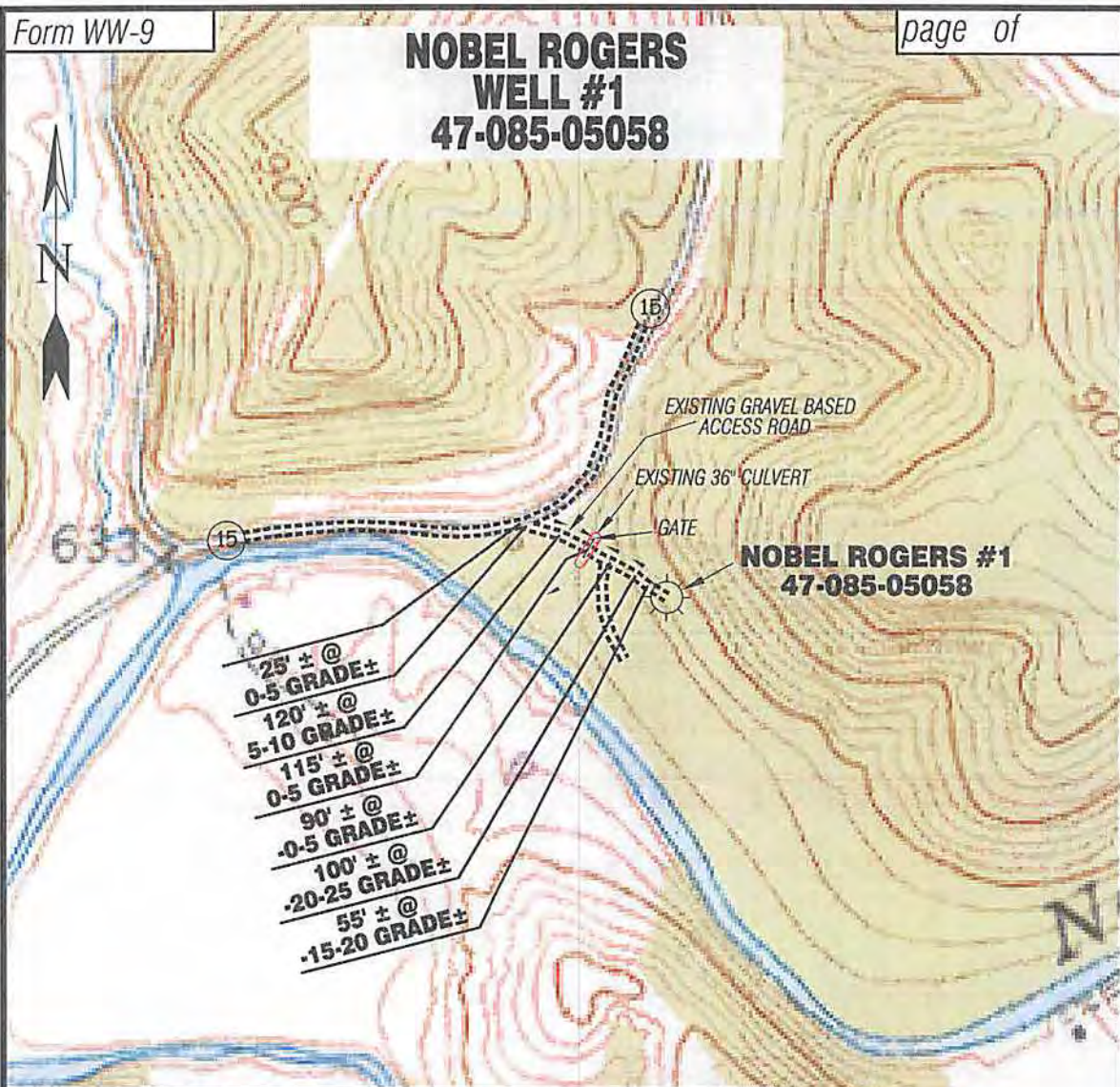
4. **Letter size copy of the topography map showing the well location.**

I the undersigned hereby certify this data is correct to the best of my knowledge and belief and shows all the information required by law and the regulations issued and prescribed by the Office of Oil and Gas.

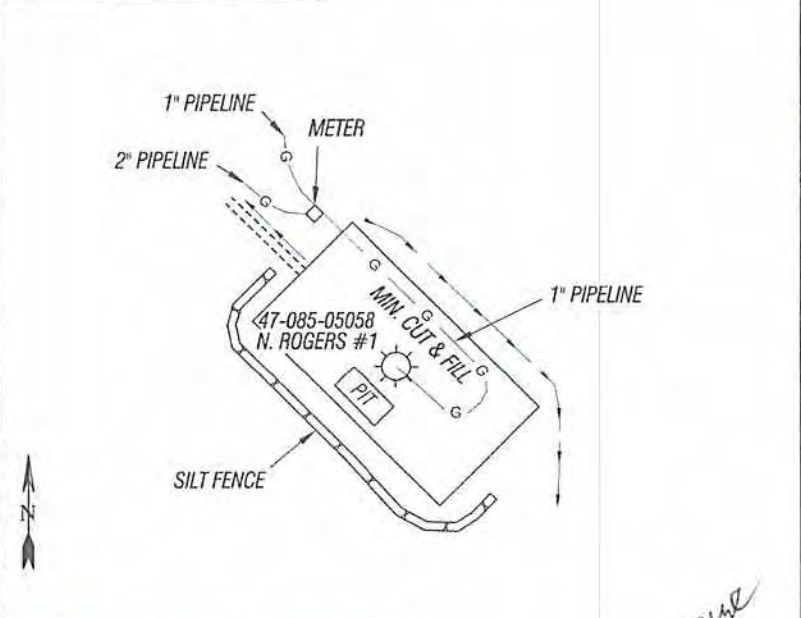
Signature: [Signature] Professional Surveyor Title: Date: 4/10/14



NOBEL ROGERS WELL #1 47-085-05058



Detail Sketch for Nobel Rogers #1



SCALE: 1" = 500'



ALL ROADS SHOWN HEREON ARE EXISTING UNLESS OTHERWISE NOTED AND SHALL BE MAINTAINED IN ACCORDANCE WITH WV D.E.P. OIL AND GAS BMP MANUAL ENTRANCES AT COUNTY/STATE ROADS SHALL BE MAINTAINED IN ACCORDANCE WITH WV D.O.T. REGULATION SEPARATE PERMITS MAY BE REQUIRED BY THE D.O.T.

SEDIMENT BASINS (TRAPS) AND APPROPRIATE EROSION CONTROL BARRIERS ARE TO BE CONSTRUCTED AT ALL CULVERT AND CROSS DRAIN INLETS AND OUTLETS AS REQUIRED IN THE WV D.E.P. OIL AND GAS BMP MANUAL. FIELD CONDITIONS (ROCK OUTCROPS AND BEDROCK) MAY PROHIBIT INLET TRAPS BEING INSTALLED. WHEN THESE CONDITIONS EXIST ADDITIONAL EROSION CONTROL MEASURES SHALL BE EVALUATED AND UTILIZED AS NEEDED.

EARTHWORK CONTRACTORS ARE RESPONSIBLE FOR NOTIFICATION TO THE OPERATOR AND INSPECTOR PRIOR TO ANY DEVIATION FROM THIS PLAN.

TEMPORARY SEED & MULCH ALL SLOPES AFTER CONSTRUCTION OF LOCATION.

CUT & STACK ALL MARKETABLE TIMBER.

STACKED BRUSH MAY BE USED FOR SEDIMENT CONTROL.

APPLICATIONS FOR SEPARATE PLC PERMITS ON THE ACCESS ROAD STREAM CROSSINGS HAVE BEEN PREPARED (IF APPLICABLE).

RECEIVED
Office of Oil and Gas
JUN 19 2014
WV Department of Environmental Protection

Due
Not To Scale

Professional Energy Consultants
A DIVISION OF BETHLAND SURVEYING, INC.
SLS
SURVEYORS
ENGINEERS
ENVIRONMENTAL
PROJECT MGMT.
(304) 462-9834 WWW.SLSURVEYS.COM

DRAWN BY K.G.M.	FILE NO. 8211	DATE 04/09/14	CADD FILE: 8211REC2.dwg
--------------------	------------------	------------------	----------------------------

TOPO SECTION OF PETROLEUM 7.5' USGS TOPO QUADRANGLE