

WW-7  
8-30-06



West Virginia Department of Environmental Protection  
Office of Oil and Gas  
**WELL LOCATION FORM: GPS**

API: 47-085-05815 WELL NO.: DeBerry # 1

FARM NAME: Harold Keith Pierce

RESPONSIBLE PARTY NAME: J F Deem

COUNTY: Ritchie DISTRICT: Union

QUADRANGLE: Oxford

SURFACE OWNER: Harold Keith Pierce

ROYALTY OWNER: DeBerry

UTM GPS NORTHING: 4,332,163

UTM GPS EASTING: 513,993 GPS ELEVATION: 282M

925'

The Responsible Party named above has chosen to submit GPS coordinates in lieu of preparing a new well location plat for a plugging permit or assigned API number on the above well. The Office of Oil and Gas will not accept GPS coordinates that do not meet the following requirements:

- Datum: NAD 1983, Zone: 17 North, Coordinate Units: meters, Altitude: height above mean sea level (MSL) – meters.
- Accuracy to Datum – 3.05 meters
- Data Collection Method:  
Survey grade GPS  : Post Processed Differential   
Real-Time Differential   
Mapping Grade GPS  : Post Processed Differential   
Real-Time Differential
- Letter size copy of the topography map showing the well location.**

I the undersigned, hereby certify this data is correct to the best of my knowledge and belief and shows all the information required by law and the regulations issued and prescribed by the Office of Oil and Gas.

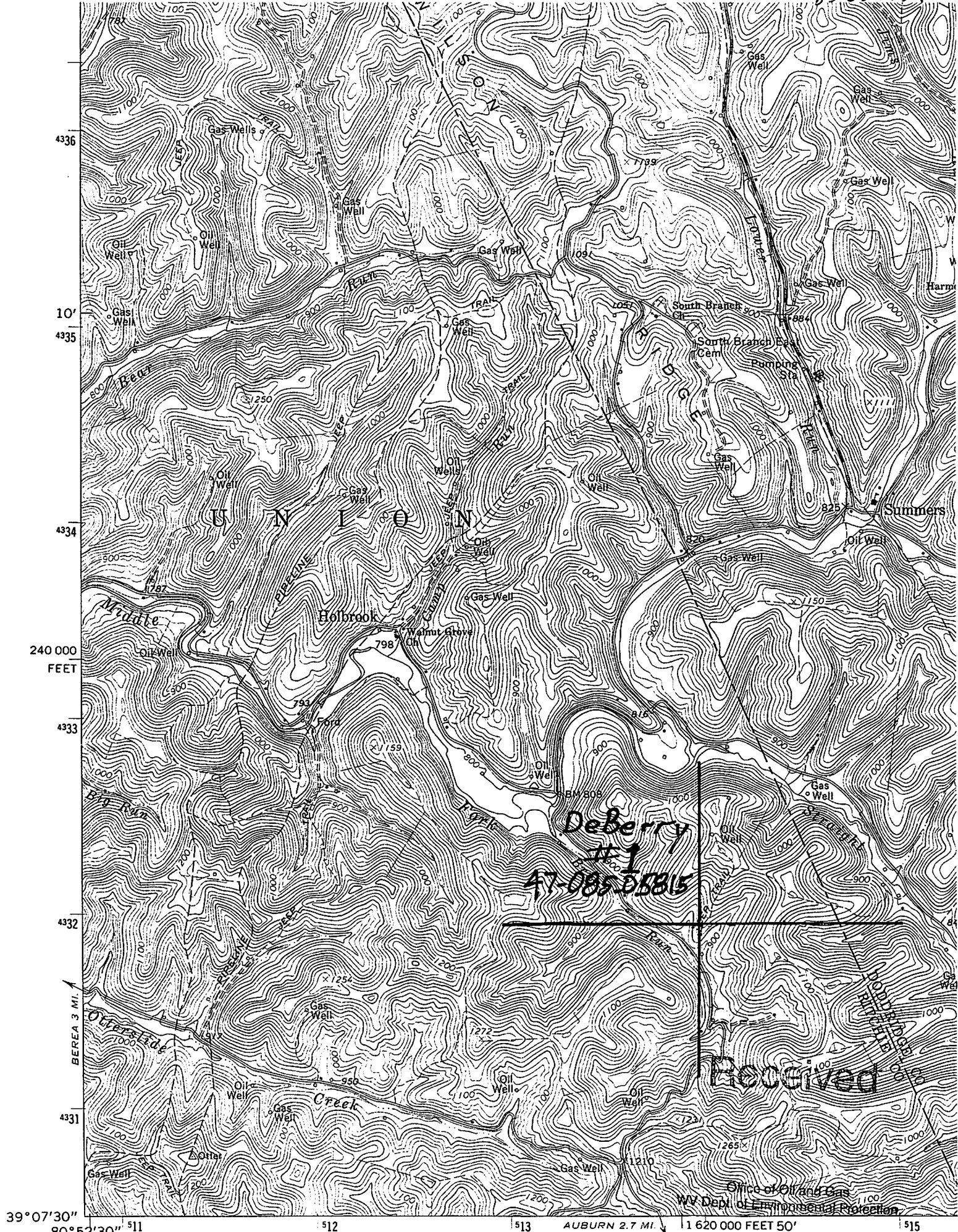
J F Deem  
Signature

Owner  
Title

8-5-13  
Date  
Office of Oil and Gas  
WV Dept. of Environmental Protection

Received

8505815 P



39°07'30" 80°52'30" 511

162000 FEET 50'

515

Mapped, edited, and published by the Geological Survey

Control by USGS and USC&GS

HOUSE SW

