

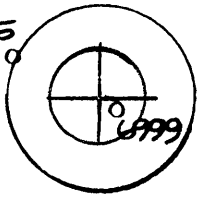
Janie 5/12/89

10860'

20

LATITUDE 39° 17' 30"

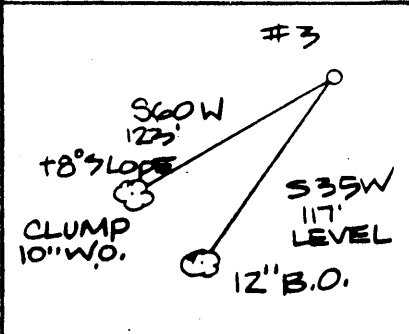
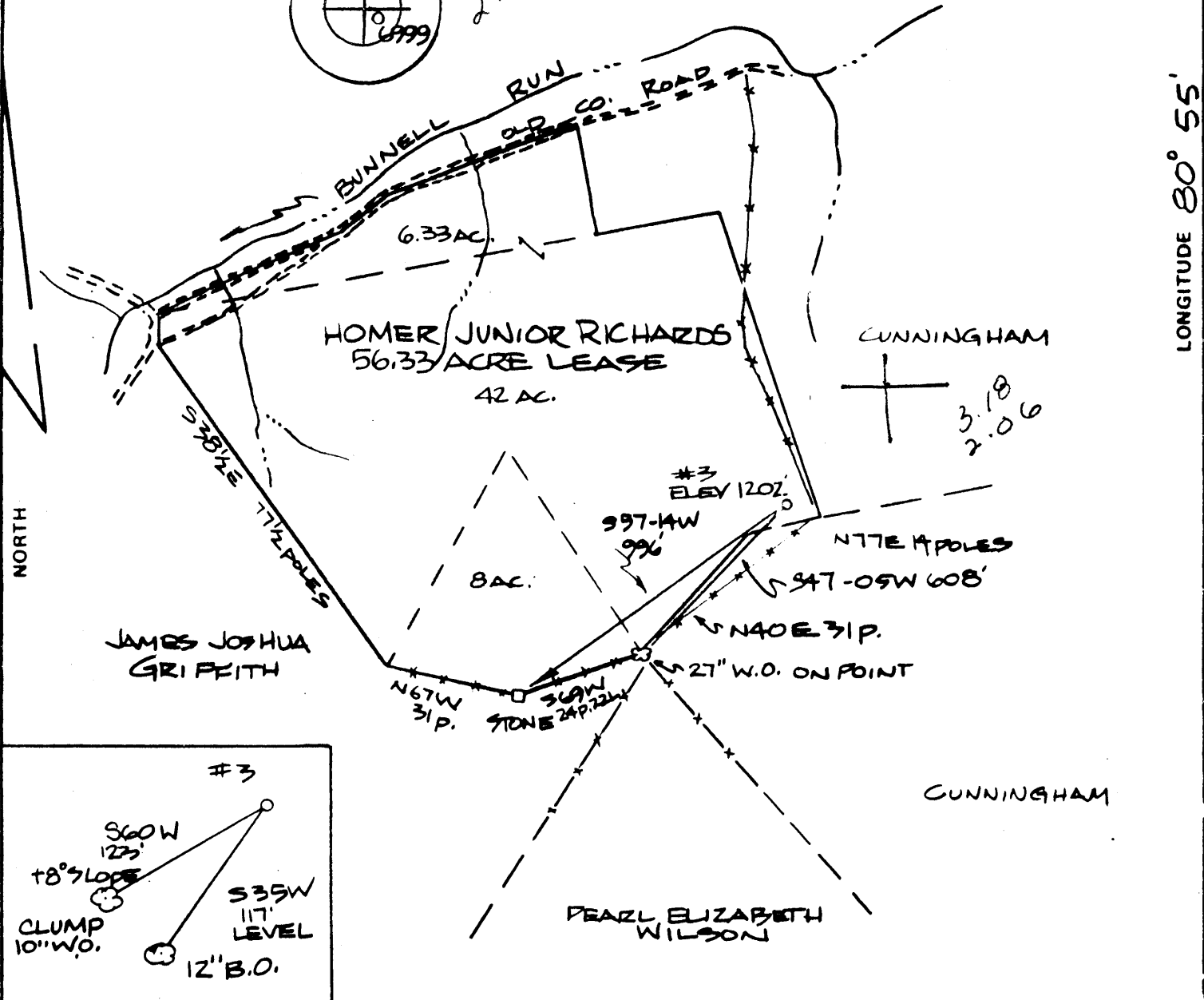
3845



0.300  
2.060

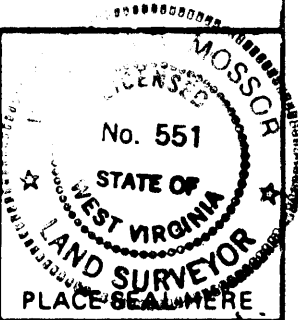
1600'

LONGITUDE 80° 55'



FILE NO. \_\_\_\_\_  
 DRAWING NO. \_\_\_\_\_  
 SCALE 1" = 500'  
 MINIMUM DEGREE OF ACCURACY 1:200  
 PROVEN SOURCE OF ELEVATION HIGH POINT  
ELEV. 1249'

I THE UNDERSIGNED, HEREBY CERTIFY THAT THIS PLAT IS CORRECT TO THE BEST OF MY KNOWLEDGE AND BELIEF AND SHOWS ALL THE INFORMATION REQUIRED BY LAW AND THE REGULATIONS ISSUED AND PRESCRIBED BY THE DEPARTMENT OF MINES  
 (SIGNED) [Signature]  
 R.P.E. \_\_\_\_\_ L.L.S. 551



(+) DENOTES LOCATION OF WELL ON UNITED STATES TOPOGRAPHIC MAPS  
 FORM IV-6 (8-78)



DATE 18 NOVEMBER, 1988  
 OPERATOR'S WELL NO. #3  
 API WELL NO. 47-085-7843  
 STATE COUNTY PERMIT

STATE OF WEST VIRGINIA  
 DEPARTMENT OF MINES  
 OIL AND GAS DIVISION

WELL TYPE: OIL  GAS  LIQUID INJECTION \_\_\_\_\_ WASTE DISPOSAL \_\_\_\_\_  
 (IF "GAS") PRODUCTION  STORAGE \_\_\_\_\_ DEEP \_\_\_\_\_ SHALLOW   
 LOCATION: ELEVATION 1202' WATER SHED BUNNELL RUN  
Clay → DISTRICT BERNSBORO CORP. COUNTY RITCHIE  
 QUADRANGLE PENNSBORO 539 1331 West Union  
 SURFACE OWNER HOMER JUNIOR RICHARD ACREAGE 42  
 OIL & GAS ROYALTY OWNER HOMER JUNIOR RICHARD LEASE ACREAGE 56.33  
 LEASE NO. \_\_\_\_\_  
 PROPOSED WORK: DRILL  CONVERT \_\_\_\_\_ DRILL DEEPER \_\_\_\_\_ REDRILL \_\_\_\_\_ FRACTURE OR STIMULATE \_\_\_\_\_ PLUG OFF OLD FORMATION \_\_\_\_\_ PERFORATE NEW FORMATION \_\_\_\_\_ OTHER PHYSICAL CHANGE IN WELL (SPECIFY) \_\_\_\_\_

PLUG AND ABANDON \_\_\_\_\_ CLEAN OUT AND REPLUG \_\_\_\_\_  
 TARGET FORMATION ALEXANDER ESTIMATED DEPTH 5300'  
 WELL OPERATOR DEVONIAN APPALACHIAN DESIGNATED AGENT ROBERT A. ANDERSON  
 ADDRESS 2510 7TH AVENUE ADDRESS 2510 7TH AVENUE  
PARKERSBURG, WV 26101 PARKERSBURG, WV 26101

MAY 12 1989

4518

(1000)

State of West Virginia  
DEPARTMENT OF ENERGY  
Division of Oil and Gas

Well Operator's Report of Well Work

Farm name: RICHARD, HOMER JUNIOR Operator Well No.: RICHARD 3

LOCATION: Elevation: 1202.00 Quadrangle: PENNSBORO

District: CLAY County: RITCHIE  
Latitude: 1680 Feet South of 39 Deg. 17Min. 30 Sec.  
Longitude 10860 Feet West of 80 Deg. 55 Min. 0 Sec.

Company: DEVONIAN APPALACHIAN COMP  
2510 SEVENTH STREET  
PARKERSBURG, WV 26101-0000

Agent: ROBERT A. ANDERSON

Inspector: SAMUEL HERSMAN  
Permit Issued: 05/12/89  
Well work Commenced: 05/30/89  
Well work Completed: 06/08/89  
Verbal Plugging  
Permission granted on: \_\_\_\_\_  
Rotary x Cable \_\_\_\_\_ Rig  
Total Depth (feet) 5521'  
Fresh water depths (ft) 670' damp

Salt water depths (ft) \_\_\_\_\_ n/a

Is coal being mined in area (Y/N)? N  
Coal Depths (ft): N/A

Casing & Tubing Size	Used in Drilling	Left in Well	Cement Fill Up Cu. Ft.
8 5/8	1340'	1340'	cement & gel
4 1/2"	5395'	5395'	197 sks

**RECEIVED**  
JUN 26 1989

DIVISION OF OIL & GAS  
DEPARTMENT OF ENERGY 5334, 5240

OPEN FLOW DATA

Producing formation Alex, Bens, Riley Pay zone depth (ft) 5050, 4690  
Gas: Initial open flow 4,000 MCF/d Oil: Initial open flow 0 Bbl/d  
Final open flow 1,800 MCF/d Final open flow 0 Bbl/d  
Time of open flow between initial and final tests 3.5 Hours  
Static rock Pressure 1910 psig (surface pressure) after 72 Hours

Second producing formation Riley Pay zone depth (ft) 4690  
Gas: Initial open flow 950 MCF/d Oil: Initial open flow 0 Bbl/d  
Final open flow 620 MCF/d Final open flow 0 Bbl/d  
Time of open flow between initial and final tests 6 hrs Hours  
Static rock Pressure 1580 psig (surface pressure) after 21 Hours

NOTE: ON BACK OF THIS FORM PUT THE FOLLOWING: 1). DETAILS OF PERFORATED INTERVALS, FRACTURING OR STIMULATING, PHYSICAL CHANGE, ETC. 2). THE WELL LOG WHICH IS A SYSTEMATIC DETAILED GEOLOGICAL RECORD OF ALL FORMATIONS, INCLUDING COAL ENCOUNTERED BY THE WELLBORE.

*Robert A. Anderson*  
For: DEVONIAN APPALACHIAN COMPANY, INC.

By: Robert A. Anderson  
Date: 6/26/89

JUN 30 1989

2nd stage

Riley; Perforated 4685-89 10 shots .39 entry; 4693-97 10 shots .39 entry  
Fraced with 75 quality Nitrogen foam with 27,000# 20/40 Ottawa sand.

1st stage

Benson; 4872-2, 4884-2, 4887-2, 4896-2, 5048-2, 4999-2, 5240-2, 5334-2

Alexander; 5329-2, 5332-2, 5334-2

Fraced with 75 quality Nitrogen Foam and 35,000# 20/40 Ottawa sand

FORMATION                      DEPTH                      OIL GAS WATER ENCOUNTERED

Sand, Red rock, shale	0-1930	damp at 670
Blue Monday	1930-40	oil & gas 4" on 1"
Sand & shale	1940-2,000	
Upper Maxon	2,000- 2,015	oil & gas
Lower Maxon	2,032-2,041	oil & gas
Big Lime	2,049-2150	oil in lower section
Big Injun	2,163-2206	gas
Squaw	2216-2230	oil & gas
shale	2230-2470	
Weir	2470-2560	oil, gas, water
Berea	2613-2616	
shale	2616-2908	
Gordon	2908-2910	
Fifth	3004-3016	oil, gas
shale	3016-3550	
Warren	3550-3605	oil, gas with multiple fractures below and above seeping oil
shale	3605-4684	
Riley	4684-4705	Natural flow 125 MCFPD
shale	4705-4895	
Lower Riley	4895-4926	gas, oil
shale	4926-5046	
Benson	5046-5050	gas natural flow 105 MCFPD
shale	5350-5330	gas in fracture at 5200'
Alexander	5330-5336	gas natural flow 110 MCFPD
shale	5336-5521	TD

**RECEIVED**  
JUN 26 1989

DIVISION OF OIL & GAS  
DEPARTMENT OF ENERGY

**STATE OF WEST VIRGINIA**  
**DEPARTMENT OF ENERGY, DIVISION OF OIL AND GAS**  
**WELL WORK PERMIT APPLICATION**

- 1) Well Operator: 4518 Devcon Appalachian Co., Inc. 13530, 1, 538
- 2) Operator's Well Number: #3 3) Elevation: 1202
- 4) Well type: (a) Oil \_\_\_ / or Gas x /  
 (b) If Gas: Production x / Underground Storage \_\_\_  
 Deep \_\_\_ / Shallow \_\_\_
- 5) Proposed Target Formation(s): 439 Riley, Benson, Alexander
- 6) Proposed Total Depth: 5500 feet
- 7) Approximate fresh water strata depths: 90, 780', 250'
- 8) Approximate salt water depths: a/k 1634', 1689'
- 9) Approximate coal seam depths: N/A Possible coal Blossom 8913
- 10) Does land contain coal seams tributary to active mine? Yes \_\_\_ / No x
- 11) Proposed Well Work: Drilling and Completion for gas production
- 12) New Well

**CASING AND TUBING PROGRAM**

TYPE	SPECIFICATIONS			FOOTAGE INTERVALS		CEMENT
	Size	Grade	Weight per ft.	For drilling	Left in well	Fill-up (cu. ft.)
Conductor	40'			40'	0	0
Fresh Water				Commut to surface		38CSR18-11.2.2
Coal				1300'	1300'	38CSR18-11.3
Intermediate	8 5/8	H-40	23#	1400'	1400'	C.T.S.
Production	4 1/2	J-55	11.6#	5400'	5400'	38CSR18-11.1
Tubing						
Liners						

PACKERS : Kind \_\_\_\_\_  
 Sizes \_\_\_\_\_  
 Depths set \_\_\_\_\_

**RECEIVED**  
 MAY 12 1989

For Division of Oil and Gas Use Only

DIVISION OF OIL & GAS  
 DEPARTMENT OF ENERGY

Fee(s) paid: 1000 Well Work Permit 1000 Reclamation Fund 1000 WPCP  
 Plat 1000 WW-9 1000 WW-2B 1000 Bond 1000 Agent  
 (Type)

