

85.09961



Antero Resources  
 Nicholson Unit 1H  
 Ritchie County WV  
 Northing: 14233109.57  
 Easting: 1673166.80  
 Original Wellpath

**WELL DETAILS:** Nicholson Unit 1H

+N/S	+E/W	Northing	Ground Level	1142.0	Latitude	Longitude	Spot
0.0	0.0	14233109.57	1673166.8039° 11' 43.488 N 80° 53' 3.857 W				

**PROJECT DETAILS:** Ritchie County WV

Geodeic System: Universal Transverse Mercator (US Survey Feet)  
 Datum: NAD 1983 (NAD80 CONUS)  
 Zone: Zone 17N (64 W to 78 W)  
 System Datum: Mean Sea Level

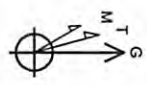
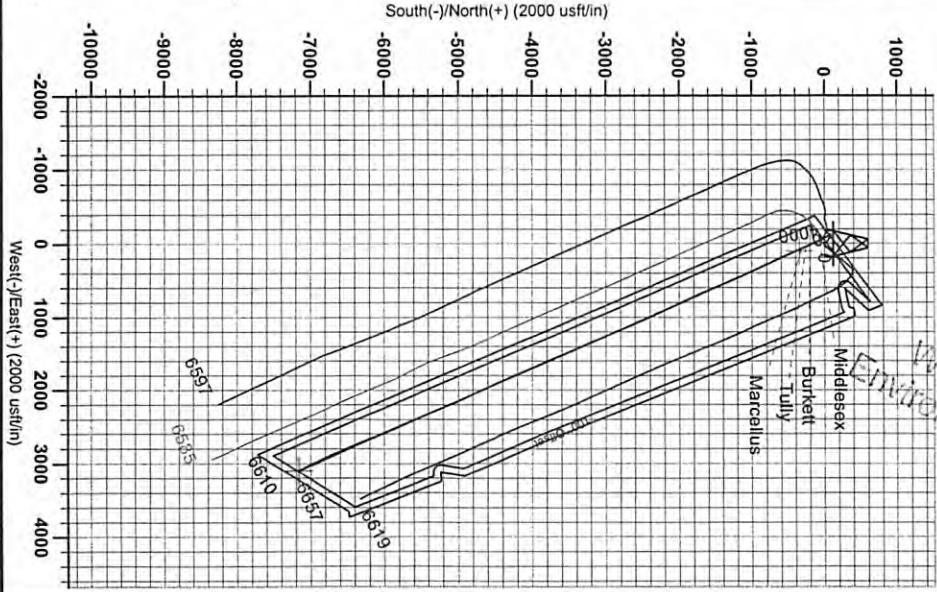
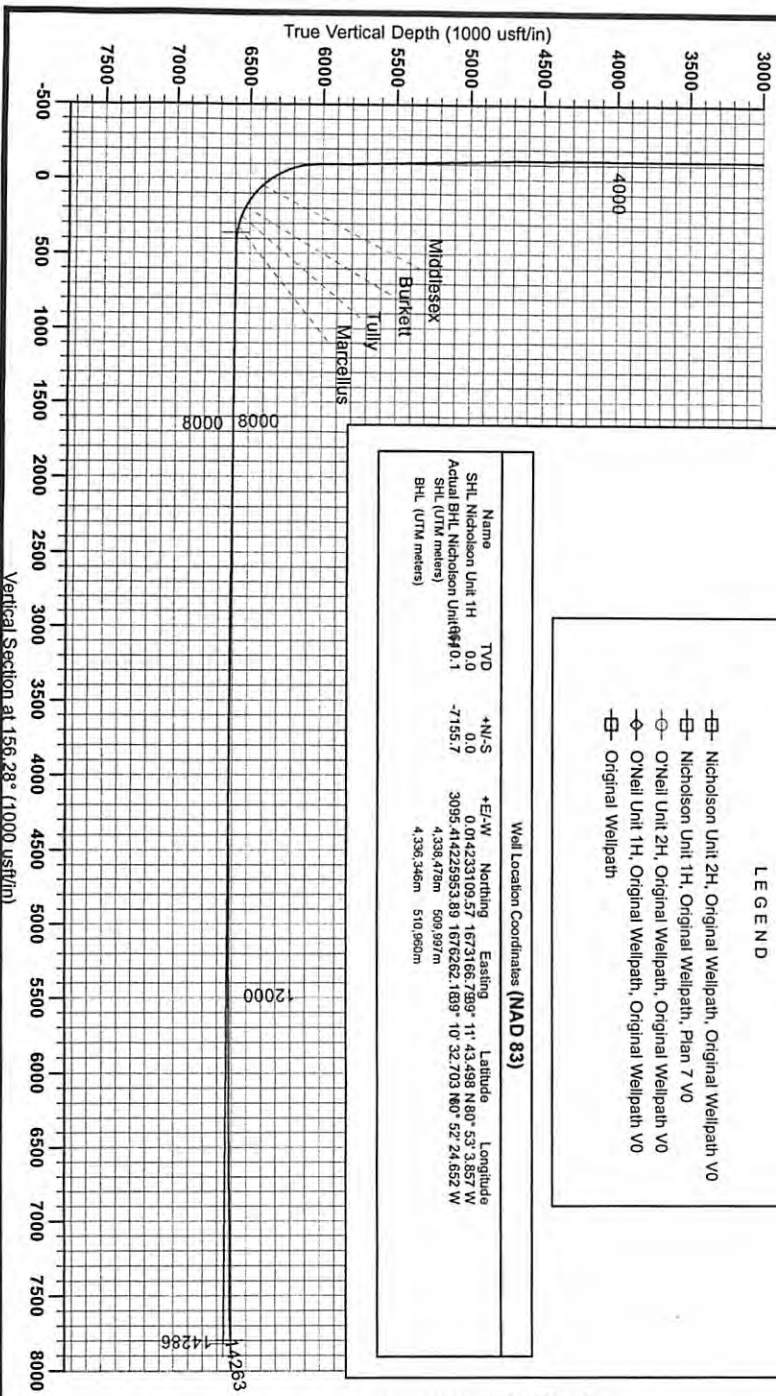
**Scientific Drilling**  
 421 South Eagle Lane  
 Oklahoma City Oklahoma  
 405-787-3663

**LEGEND**

- ▣ Nicholson Unit 2H, Original Wellpath, Original Wellpath V0
- ▣ Nicholson Unit 1H, Original Wellpath, Plan 7 V0
- ONeill Unit 2H, Original Wellpath, Original Wellpath V0
- ◇ ONeill Unit 1H, Original Wellpath, Original Wellpath V0
- ▣ Original Wellpath

**Well Location Coordinates (NAD 83)**

Name	TVD	+N/S	+E/W	Northing	Easting	Latitude	Longitude
SHL Nicholson Unit 1H	0.0	0.0	0.014233109.57	1673166.799°	11' 43.498 N 80° 53' 3.857 W		
Actual BHL Nicholson Unit#10.1		-7155.7		3095.414229593.89	1676262.189°	10' 32.703 N 80° 52' 24.652 W	
SHL (UTM meters)				4,338.478m	509.697m		
BHL (UTM meters)				4,336.346m	510.960m		



RECEIVED  
 Office of Oil and Gas  
 NOV 1 2013  
 WV Department of Environmental Protection

Magnetic Field  
 Strength: 52403.3acT  
 Dip Angle: 66.65°  
 Date: 7/15/2012  
 Model: IGRF2010

01/10/2014