



Antero Resources
 Kuhn Unit 1H
 Ritchie County WV
 Northing: 14227800.70
 Easting: 1660221.39
 Original Wellpath

WELL DETAILS: Kuhn Unit 1H

+NLS: 0.0 +EAW: 0.0 +NORTH: 1014.0 Slot
 Ground Level: 1660221.39 Longitude: 85° 48' 40.1" W
 Easting: 14227800.70

PROJECT DETAILS: Ritchie County WV

Geodetic System: Universal Transverse Mercator (US Survey Feet)
 Datum: NAD 1983 (NAD83 CONUS)
 Ellipsoid: Clarke 1866
 Zone: Zone 17N (64 W to 78 W)
 System Datum: Mean Sea Level

REFERENCE INFORMATION
 Coordinates (UTM) referenced to Kuhn Unit 1H, Grid North
 Magnetic North: -0.04°
 True North: -0.04°
 Strength: 52416.6 nT
 Declination: 66.81°
 Date: 02/22/2010
 Model: IGRF2010



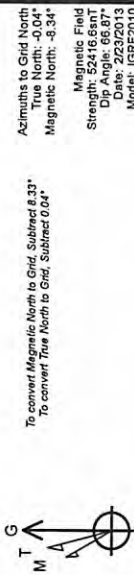
Scientific Drilling
 421 South Eagle Lane
 Oklahoma City, Oklahoma
 405-787-3663

LEGEND

- △ Pullman Unit 2H, Original Wellpath, Original Wellpath V0
- Kuhn Unit 1H, Original Wellpath, Plan 6 V0
- Original Wellpath

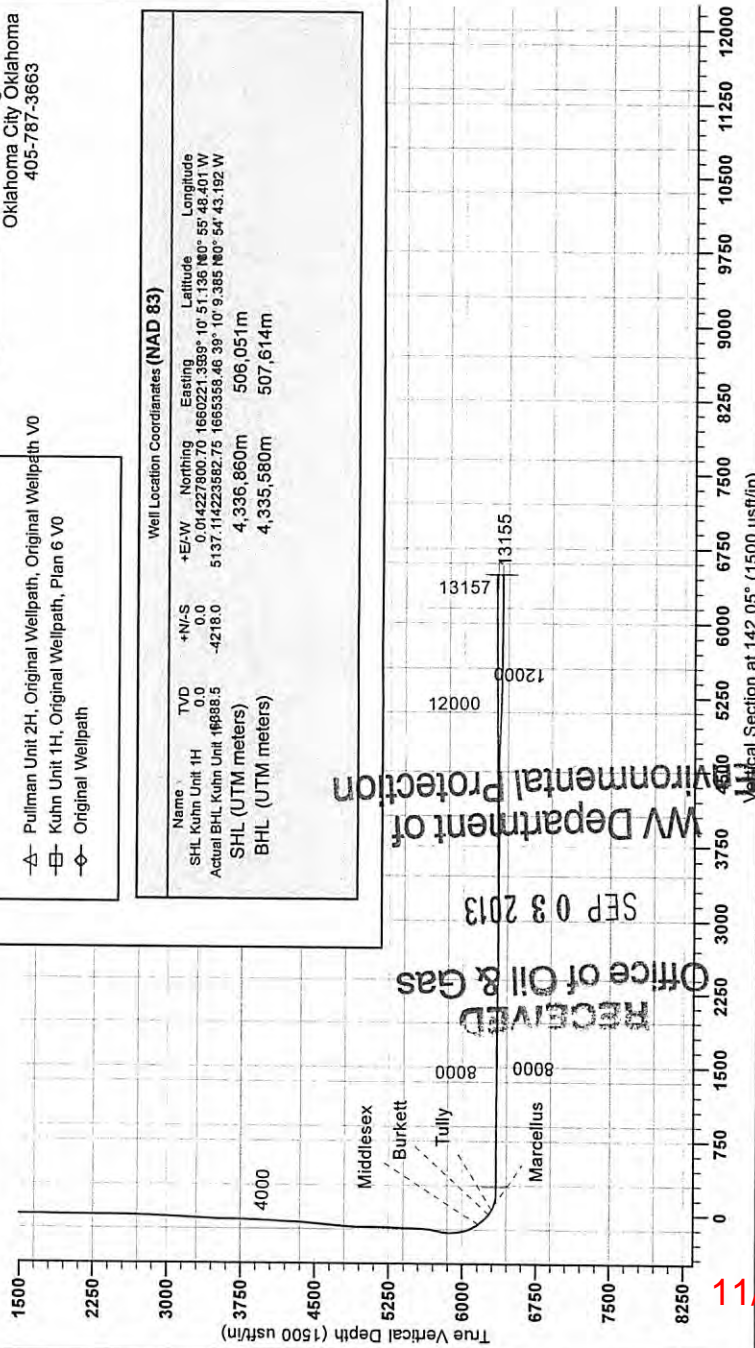
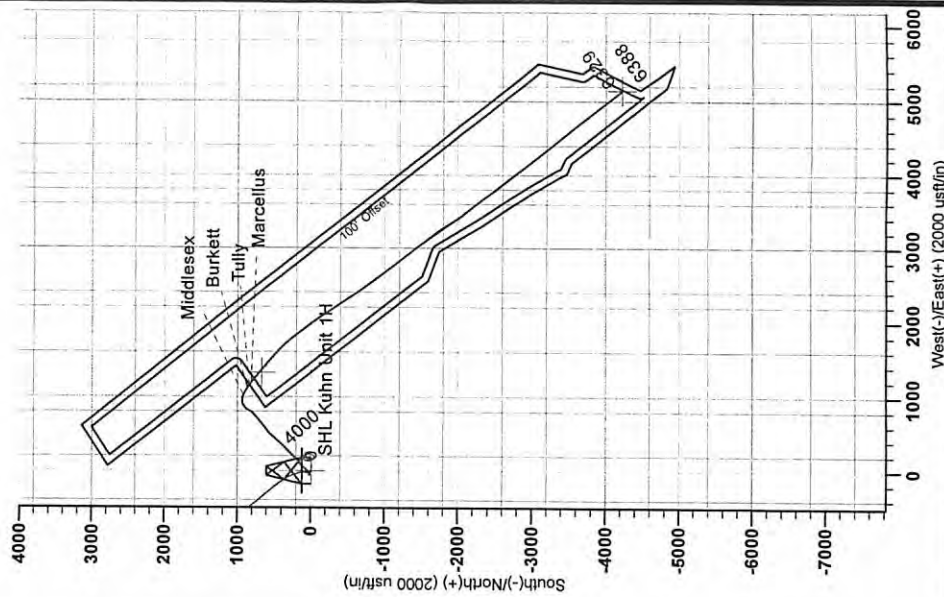
Well Location Coordinates (NAD 83)

Name	TVD	+NLS	+EAW	Northing	Easting	Latitude	Longitude
SHL Kuhn Unit 1H	0.0	0.0	0.0	14227800.70	1660221.39	39° 10' 51.158" N	85° 48' 40.1" W
Actual BHL Kuhn Unit	16688.5	-4218.0	5137.1	14223582.75	1665558.46	39° 10' 9.385" N	84° 43.192" W
SHL (UTM meters)	4,336,860m	506,051m					
BHL (UTM meters)	4,335,580m	507,614m					



To convert Magnetic North to Grid, Subtract 8.33°
 To convert True North to Grid, Subtract 0.04°

Magnetic Field
 Strength: 52416.6 nT
 Declination: 66.81°
 Date: 02/22/2010
 Model: IGRF2010



RECEIVED
 Office of Oil & Gas
 SEP 03 2013
 WV Department of Environmental Protection

85-10002

11/08/2013