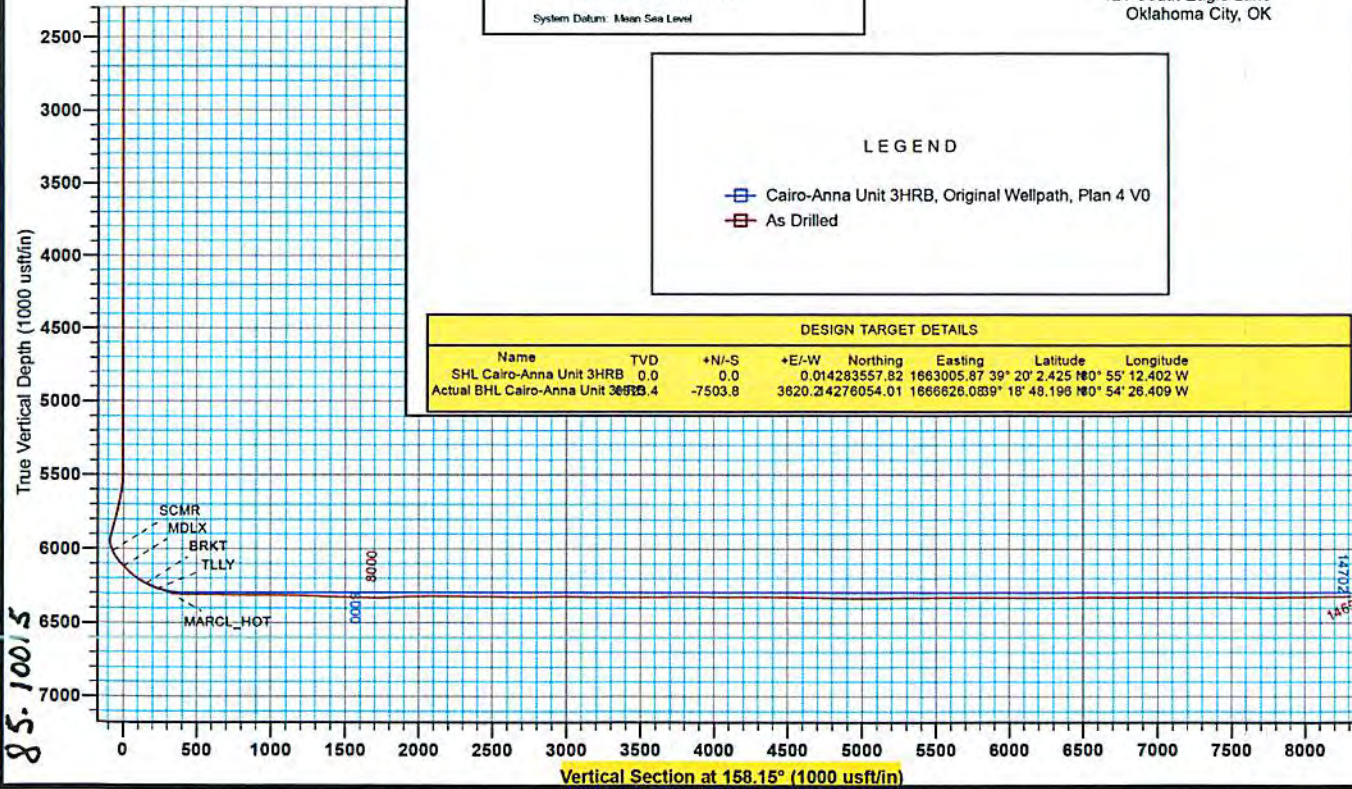




Antero Resources
 Cairo-Anna Unit 3HRB
 Ritchie County WV
 Northing: 14283557.82
 Easting: 1663005.87
 As Drilled



WELL DETAILS: Cairo-Anna Unit 3HRB

+N/-S	+E/-W	Northing	Ground Level	Latitude	Longitude	Slot
0.0	0.0	14283557.82	970.0	39° 20' 2.425 N	80° 55' 12.402 W	
		Easting				
		1663005.87				

REFERENCE INFORMATION

Coordinate (N/E) Reference: West Cairo-Anna Unit 3HRB, Grid North
 Vertical (TVS) Reference: Half 570' ± 13" @ 393.0usft
 Section (V/S) Reference: Slot - (0.0K, 0.0S)
 Measured Depth Reference: Half 272' ± 13" @ 393.0usft
 Calculation Method: Minimum Curvature



PROJECT DETAILS: Ritchie County WV

Geodetic System: Universal Transverse Mercator (US Survey Feet)
 Datum: NAD 1983 (NADCON CONUS)
 Ellipsoid: Clarke 1866
 Zone: Zone 17N (84 W to 78 W)
 System Datum: Mean Sea Level

Genie Lightfoot
 16:16, September 24 2014

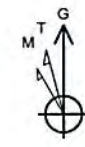
Scientific Drilling
 421 South Eagle Lane
 Oklahoma City, OK

LEGEND

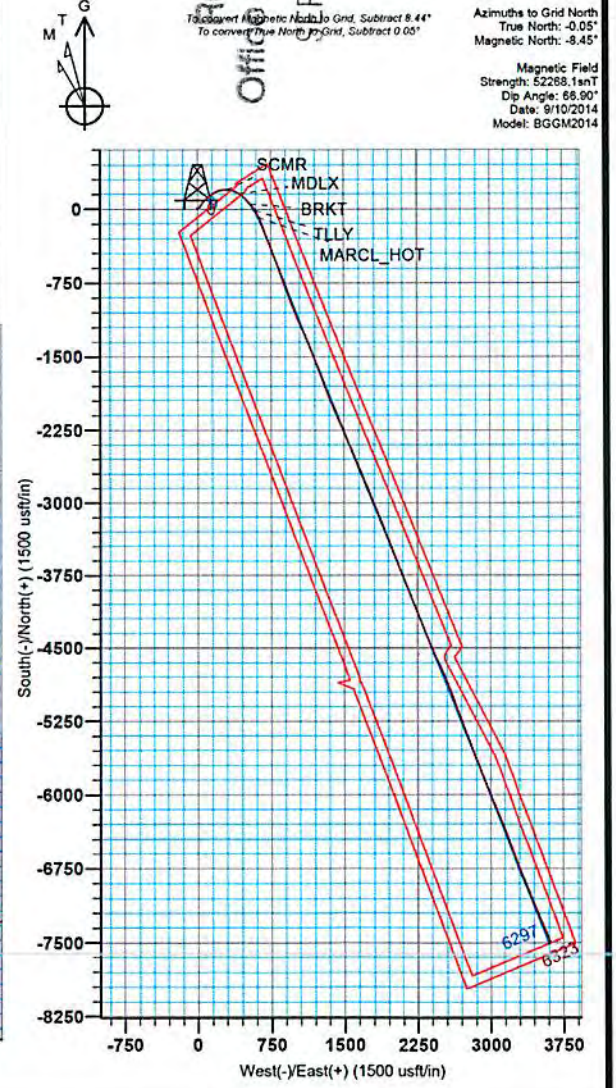
- Cairo-Anna Unit 3HRB, Original Wellpath, Plan 4 V0
- As Drilled

DESIGN TARGET DETAILS

Name	TVD	+N/-S	+E/-W	Northing	Easting	Latitude	Longitude
SHL Cairo-Anna Unit 3HRB	0.0	0.0	0.014283557.82	1663005.87	39° 20' 2.425 N	80° 55' 12.402 W	
Actual BHL Cairo-Anna Unit 3HRB	36593.4	-7503.8	3620.214276054.01	1666626.0839	18° 48.196 N	80° 54' 26.409 W	



Received
 Office of Oil & Gas
 P 21 2015



Azimuths to Grid North
 True North: -0.05°
 Magnetic North: -8.45°

Magnetic Field
 Strength: 52268.1snT
 Dip Angle: 66.90°
 Date: 9/10/2014
 Model: BGGM2014

85.10015



Antero Resources

**Ritchie County WV
Anna Pad
Cairo-Anna Unit 3HRB
Original Wellpath**

Design: As Drilled

EOW Completion Report

24 September, 2014

Received
Office of Oil & Gas
SEP 21 2015

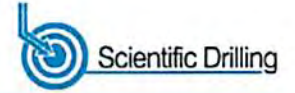


10/16/2015

85.10015



EOW Completion Report



Company:	Antero Resources	Local Co-ordinate Reference:	Well Cairo-Anna Unit 3HRB
Project:	Ritchie County WV	TVD Reference:	Hall: 970' + 13' @ 983.0usft
Site:	Anna Pad	MD Reference:	Hall: 970' + 13' @ 983.0usft
Well:	Cairo-Anna Unit 3HRB	North Reference:	Grid
Wellbore:	Original Wellpath	Survey Calculation Method:	Minimum Curvature
Design:	As Drilled	Database:	Oklahoma District

Project	Ritchie County WV, Ritchie County WV, WV North		
Map System:	Universal Transverse Mercator (US Survey Fee	System Datum:	Mean Sea Level
Geo Datum:	NAD 1927 (NADCON CONUS)		
Map Zone:	Zone 17N (84 W to 78 W)		

Site	Anna Pad				
Site Position:		Northing:	14,283,550.70 usft	Latitude:	39° 20' 2.355 N
From:	Map	Easting:	1,662,998.99 usft	Longitude:	80° 55' 12.490 W
Position Uncertainty:	2.0 usft	Slot Radius:	13-3/16"	Grid Convergence:	0.05 °

Well	Cairo-Anna Unit 3HRB					
Well Position	+N/-S	0.0 usft	Northing:	14,283,557.82 usft	Latitude:	39° 20' 2.425 N
	+E/-W	0.0 usft	Easting:	1,663,005.87 usft	Longitude:	80° 55' 12.402 W
Position Uncertainty		2.0 usft	Wellhead Elevation:	983.0 usft	Ground Level:	970.0 usft

Wellbore	Original Wellpath				
-----------------	-------------------	--	--	--	--

Magnetics	Model Name	Sample Date	Declination (°)	Dip Angle (°)	Field Strength (nT)
	BGGM2014	9/10/2014	-8.39	66.90	52,268

Design	As Drilled				
---------------	------------	--	--	--	--

Audit Notes:					
Version:	1.0	Phase:	ACTUAL	Tie On Depth:	0.0
Vertical Section:		Depth From (TVD) (usft)	+N/-S (usft)	+E/-W (usft)	Direction (°)
		0.0	0.0	0.0	158.15

Survey Program	Date	9/24/2014			
From (usft)	To (usft)	Survey (Wellbore)	Tool Name	Description	
100.0	5,437.7	Survey #1 Def Gyro to KOP (Original Well	SDI Standard Keeper	Scientific Drilling Intl. Standard Wireline Keeper	
5,480.0	14,692.0	Survey #2 MWD (Original Wellpath)	SDI MWD	Scientific Drilling Intl. MWD - Standard ver 1.0.1	

MD (usft)	Inc (°)	Azi (azimuth) (°)	TVD (usft)	N/S (usft)	E/W (usft)	V. Sep (usft)	DLeg (usft)
0.0	0.00	0.00	0.0	0.0	0.0	0.0	0.00
100.0	0.14	335.77	100.0	0.1	-0.1	-0.1	0.14
200.0	0.20	273.02	200.0	0.2	-0.3	-0.3	0.18
300.0	0.19	246.09	300.0	0.2	-0.6	-0.4	0.09
400.0	0.13	251.87	400.0	0.1	-0.9	-0.4	0.06
500.0	0.13	271.22	500.0	0.0	-1.1	-0.4	0.04
600.0	0.20	313.73	600.0	0.2	-1.3	-0.6	0.14
700.0	0.09	340.21	700.0	0.4	-1.5	-0.9	0.13
800.0	0.18	323.36	800.0	0.6	-1.6	-1.1	0.10
900.0	0.05	328.35	900.0	0.7	-1.7	-1.3	0.13
1,000.0	0.11	299.40	1,000.0	0.8	-1.8	-1.4	0.07

Receiver
Office of Oil & Gas
SEP 21 2015



85-10015

EOW Completion Report



Company:	Antero Resources	Local Co-ordinate Reference:	Well Cairo-Anna Unit 3HRB
Project:	Ritchie County WV	TVD Reference:	Hall: 970' + 13' @ 983.0usft
Site:	Anna Pad	MD Reference:	Hall: 970' + 13' @ 983.0usft
Well:	Cairo-Anna Unit 3HRB	North Reference:	Grid
Wellbore:	Original Wellpath	Survey Calculation Method:	Minimum Curvature
Design:	As Drilled	Database:	Oklahoma District

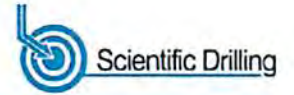
Survey									
MD (usft)	Inc (°)	Azi (azimuth) (°)	TVD (usft)	N/S (usft)	E/W (usft)	V. Sec (usft)	DLeg (°/100usft)		
1,100.0	0.10	35.80	1,100.0	0.9	-1.8	-1.5	0.16		
1,200.0	0.10	319.40	1,200.0	1.1	-1.9	-1.7	0.12		
1,300.0	0.15	3.87	1,300.0	1.3	-1.9	-1.9	0.11		
1,400.0	0.06	47.10	1,400.0	1.4	-1.9	-2.0	0.11		
1,500.0	0.08	304.18	1,500.0	1.5	-1.9	-2.1	0.11		
1,600.0	0.23	354.46	1,600.0	1.7	-2.0	-2.3	0.19		
1,700.0	0.10	5.86	1,700.0	2.0	-2.0	-2.6	0.13		
1,800.0	0.32	354.41	1,800.0	2.4	-2.0	-3.0	0.22		
1,900.0	0.06	90.03	1,900.0	2.7	-2.0	-3.2	0.33		
2,000.0	0.13	349.59	2,000.0	2.8	-1.9	-3.3	0.15		
2,100.0	0.13	92.68	2,100.0	2.9	-1.8	-3.4	0.20		
2,200.0	0.04	323.80	2,200.0	2.9	-1.7	-3.3	0.16		
2,300.0	0.09	324.04	2,300.0	3.0	-1.8	-3.5	0.05		
2,400.0	0.08	342.72	2,400.0	3.1	-1.9	-3.6	0.03		
2,500.0	0.04	287.83	2,500.0	3.2	-1.9	-3.7	0.07		
2,600.0	0.11	291.53	2,600.0	3.3	-2.0	-3.8	0.07		
2,700.0	0.12	308.80	2,700.0	3.4	-2.2	-3.9	0.04		
2,800.0	0.03	212.70	2,800.0	3.4	-2.3	-4.0	0.13		
2,900.0	0.05	231.40	2,900.0	3.3	-2.4	-4.0	0.02		
3,000.0	0.13	246.46	3,000.0	3.3	-2.5	-4.0	0.08		
3,100.0	0.18	292.95	3,100.0	3.3	-2.8	-4.1	0.13		
3,200.0	0.03	180.05	3,200.0	3.3	-2.9	-4.2	0.19		
3,300.0	0.10	202.52	3,300.0	3.2	-2.9	-4.1	0.07		
3,400.0	0.02	160.95	3,400.0	3.1	-3.0	-4.0	0.09		
3,500.0	0.17	78.70	3,500.0	3.1	-2.8	-4.0	0.17		
3,600.0	0.19	98.16	3,600.0	3.1	-2.5	-3.8	0.06		
3,700.0	0.16	47.70	3,700.0	3.2	-2.2	-3.8	0.15		
3,800.0	0.21	83.76	3,800.0	3.3	-1.9	-3.8	0.12		
3,900.0	0.28	56.28	3,900.0	3.5	-1.6	-3.8	0.13		
4,000.0	0.38	39.54	4,000.0	3.9	-1.1	-4.0	0.14		
4,100.0	0.50	41.67	4,100.0	4.5	-0.6	-4.4	0.12		
4,200.0	0.64	51.85	4,200.0	5.1	0.1	-4.7	0.17		
4,300.0	0.73	69.63	4,300.0	5.7	1.1	-4.9	0.23		
4,400.0	0.68	76.02	4,400.0	6.1	2.3	-4.8	0.09		
4,500.0	0.80	63.93	4,500.0	6.5	3.5	-4.7	0.20		
4,600.0	0.98	66.27	4,599.9	7.2	4.9	-4.8	0.18		
4,700.0	1.11	70.10	4,699.9	7.8	6.6	-4.8	0.15		
4,800.0	0.98	71.87	4,799.9	8.4	8.3	-4.7	0.13		
4,900.0	1.20	69.17	4,899.9	9.1	10.1	-4.6	0.23		
5,000.0	1.12	70.51	4,999.9	9.8	12.0	-4.6	0.08		
5,100.0	1.34	70.25	5,099.9	10.5	14.0	-4.5	0.22		
5,200.0	1.06	73.93	5,199.8	11.1	16.0	-4.4	0.29		
5,300.0	1.15	77.26	5,299.8	11.6	17.9	-4.1	0.11		
5,400.0	1.18	66.84	5,399.8	12.2	19.8	-4.0	0.21		

Received
Office of Oil & Gas
SEP 21 2015

85-10015



EOW Completion Report



Company: Antero Resources	Local Co-ordinate Reference: Well Cairo-Anna Unit 3HRB
Project: Ritchie County WV	TVD Reference: Hall: 970' + 13' @ 983.0usft
Site: Anna Pad	MD Reference: Hall: 970' + 13' @ 983.0usft
Well: Cairo-Anna Unit 3HRB	North Reference: Grid
Wellbore: Original Wellpath	Survey Calculation Method: Minimum Curvature
Design: As Drilled	Database: Oklahoma District

Survey									
MD (usft)	Inc (°)	Azi (azimuth) (°)	TVD (usft)	N/S (usft)	E/W (usft)	V. Sec (usft)	DLeg (°/100usft)		
5,437.7	1.17	74.45	5,437.5	12.5	20.6	-3.9	0.41		
5,480.0	1.23	73.40	5,479.8	12.7	21.4	-3.9	0.15		
5,512.0	3.25	42.49	5,511.7	13.5	22.3	-4.2	7.14		
5,543.0	7.03	27.78	5,542.6	15.8	23.8	-5.8	12.82		
5,575.0	9.85	23.83	5,574.3	20.1	25.8	-9.0	8.99		
5,607.0	12.40	29.19	5,605.7	25.6	28.6	-13.1	8.59		
5,639.0	15.74	31.39	5,636.7	32.3	32.6	-17.8	10.57		
5,671.0	18.55	35.25	5,667.3	40.1	37.8	-23.2	9.47		
5,702.0	21.98	37.54	5,696.4	48.8	44.1	-28.8	11.35		
5,734.0	25.24	39.37	5,725.7	58.8	52.1	-35.2	10.44		
5,766.0	28.58	41.85	5,754.2	69.8	61.6	-41.9	11.01		
5,798.0	32.18	43.34	5,781.8	81.7	72.5	-48.8	11.49		
5,830.0	35.61	46.77	5,808.4	94.3	85.2	-55.8	12.27		
5,862.0	38.87	49.84	5,833.8	107.1	99.6	-62.4	11.72		
5,894.0	42.82	51.51	5,858.0	120.4	115.8	-68.6	12.81		
5,925.0	47.22	52.30	5,880.0	133.9	133.1	-74.8	14.31		
5,957.0	50.39	54.33	5,901.0	148.3	152.4	-80.9	11.00		
5,989.0	51.09	59.78	5,921.3	161.7	173.2	-85.7	13.36		
6,021.0	51.27	65.93	5,941.4	173.1	195.3	-88.0	14.98		
6,052.0	51.18	71.99	5,960.8	181.8	217.9	-87.6	15.24		
6,084.0	51.35	77.62	5,980.8	188.3	241.9	-84.7	13.73		
6,116.0	51.62	83.86	6,000.8	192.3	266.6	-79.3	15.28		
6,147.0	52.23	89.39	6,019.9	193.8	291.0	-71.5	14.18		
6,155.0	52.27	90.76	6,024.8	193.7	297.3	-69.2	13.51		
SCMR									
6,179.0	52.50	94.84	6,039.4	192.8	316.3	-61.3	13.51		
6,211.0	52.50	101.08	6,058.9	189.3	341.4	-48.6	15.47		
6,243.0	51.88	107.41	6,078.6	183.1	365.9	-33.8	15.74		
6,275.0	51.27	113.12	6,098.5	174.4	389.4	-17.0	14.11		
6,306.0	50.91	119.19	6,117.9	163.8	411.0	0.9	15.28		
6,324.0	51.08	122.46	6,129.3	156.6	423.0	12.1	14.15		
MDLX									
6,338.0	51.27	124.99	6,138.0	150.6	432.1	24.1	14.15		
6,369.0	51.97	128.42	6,157.3	136.1	451.6	41.8	8.96		
6,401.0	54.08	130.79	6,176.5	119.8	471.3	64.2	8.86		
6,432.0	56.89	133.34	6,194.1	102.6	490.2	87.2	11.32		
6,464.0	59.62	135.80	6,210.9	83.5	509.6	112.1	10.75		
6,496.0	61.82	137.21	6,226.6	63.3	528.8	138.1	7.88		
6,514.0	63.19	138.80	6,234.9	51.4	539.5	153.1	10.93		
BRKT									
6,527.0	64.19	139.93	6,240.7	42.6	547.1	164.1	10.93		
6,559.0	67.36	142.74	6,253.8	19.8	565.3	192.0	12.74		
6,591.0	70.17	145.29	6,265.4	-4.3	582.8	220.9	11.50		
6,602.0	71.07	146.68	6,269.0	-12.9	588.6	231.1	14.41		
TLLY									

Received
Office of Oil & Gas
SEP 21 2015



85.10015

EOW Completion Report



Company:	Antero Resources	Local Co-ordinate Reference:	Well Cairo-Anna Unit 3HRB
Project:	Ritchie County WV	TVD Reference:	Hall: 970' + 13' @ 983.0usft
Site:	Anna Pad	MD Reference:	Hall: 970' + 13' @ 983.0usft
Well:	Cairo-Anna Unit 3HRB	North Reference:	Grid
Wellbore:	Original Wellpath	Survey Calculation Method:	Minimum Curvature
Design:	As Drilled	Database:	Oklahoma District

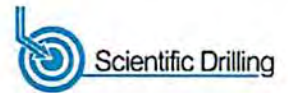
Survey								
MD (usft)	Inc (°)	Azi (azimuth) (°)	TVD (usft)	N/S (usft)	E/W (usft)	V. Sec (usft)	DLeg (°/100usft)	
6,622.0	72.72	149.16	6,275.3	-29.0	598.7	249.8	14.41	
6,654.0	72.98	153.03	6,284.7	-55.8	613.5	280.1	11.58	
6,686.0	73.25	156.72	6,294.0	-83.5	626.5	310.7	11.07	
MARCL_HOT								
6,718.0	76.94	157.77	6,302.2	-112.0	638.4	341.6	11.96	
6,750.0	81.43	157.95	6,308.2	-141.1	650.3	373.0	14.04	
6,797.0	88.55	158.56	6,312.3	-184.6	667.6	419.8	15.20	
6,829.0	89.78	158.56	6,312.8	-214.4	679.3	451.8	3.84	
6,924.0	90.22	158.65	6,312.8	-302.8	714.0	546.8	0.47	
7,018.0	89.16	159.36	6,313.3	-390.6	747.6	640.8	1.36	
7,113.0	89.43	159.71	6,314.5	-479.6	780.9	735.8	0.47	
7,208.0	90.13	160.06	6,314.8	-568.8	813.5	830.7	0.82	
7,303.0	90.48	158.74	6,314.3	-657.7	847.0	925.7	1.44	
7,399.0	88.99	159.97	6,314.8	-747.5	880.8	1,021.7	2.01	
7,493.0	89.52	159.00	6,316.0	-835.6	913.7	1,115.6	1.18	
7,589.0	88.11	158.30	6,318.0	-925.0	948.7	1,211.6	1.64	
7,684.0	87.41	157.42	6,321.7	-1,012.9	984.5	1,306.5	1.18	
7,780.0	87.93	157.72	6,325.6	-1,101.6	1,021.1	1,402.4	0.63	
7,876.0	88.81	156.81	6,328.3	-1,190.1	1,058.1	1,498.4	1.32	
7,972.0	88.29	155.22	6,330.8	-1,277.7	1,097.1	1,594.3	1.74	
8,066.0	88.64	154.78	6,333.3	-1,362.9	1,136.9	1,688.1	0.60	
8,163.0	92.59	160.76	6,332.2	-1,452.6	1,173.5	1,785.0	7.39	
8,258.0	92.68	159.79	6,327.9	-1,542.0	1,205.6	1,879.9	1.02	
8,352.0	91.19	159.27	6,324.7	-1,630.0	1,238.4	1,973.8	1.68	
8,448.0	91.28	158.83	6,322.6	-1,719.6	1,272.7	2,069.7	0.47	
8,543.0	89.25	158.83	6,322.2	-1,808.2	1,307.0	2,164.7	2.14	
8,638.0	89.16	159.00	6,323.5	-1,896.8	1,341.2	2,259.7	0.20	
8,734.0	89.16	158.21	6,324.9	-1,986.2	1,376.2	2,355.7	0.82	
8,829.0	88.90	156.72	6,326.5	-2,073.9	1,412.6	2,450.7	1.59	
8,923.0	90.40	156.63	6,327.1	-2,160.2	1,449.8	2,544.6	1.60	
9,014.0	90.13	155.75	6,326.7	-2,243.5	1,486.6	2,635.6	1.01	
9,104.0	90.40	156.81	6,326.3	-2,325.9	1,522.8	2,725.5	1.22	
9,196.0	90.31	157.42	6,325.7	-2,410.6	1,558.6	2,817.5	0.67	
9,286.0	90.57	157.25	6,325.0	-2,493.7	1,593.2	2,907.5	0.35	
9,377.0	89.08	156.19	6,325.3	-2,577.3	1,629.2	2,998.5	2.01	
9,468.0	89.52	157.25	6,326.4	-2,660.9	1,665.2	3,089.4	1.26	
9,558.0	89.60	157.33	6,327.1	-2,743.9	1,699.9	3,179.4	0.13	
9,648.0	89.78	158.12	6,327.6	-2,827.2	1,734.0	3,269.4	0.90	
9,738.0	90.48	159.00	6,327.4	-2,910.9	1,766.9	3,359.4	1.25	
9,829.0	89.96	158.74	6,327.0	-2,995.8	1,799.7	3,450.4	0.64	
9,919.0	89.69	158.48	6,327.3	-3,079.6	1,832.6	3,540.4	0.42	
10,010.0	89.60	157.86	6,327.8	-3,164.1	1,866.4	3,631.4	0.69	
10,104.0	90.75	159.18	6,327.6	-3,251.5	1,900.8	3,725.4	1.86	
10,199.0	91.10	159.36	6,326.0	-3,340.4	1,934.4	3,820.4	0.41	
10,294.0	88.37	156.98	6,326.5	-3,428.6	1,969.8	3,915.4	3.81	

Received
Office of Oil & Gas
SEP 21 2014



85.10015

EOW Completion Report



Company:	Antero Resources	Local Co-ordinate Reference:	Well Cairo-Anna Unit 3HRB
Project:	Ritchie County WV	TVD Reference:	Hall: 970' + 13' @ 983.0usft
Site:	Anna Pad	MD Reference:	Hall: 970' + 13' @ 983.0usft
Well:	Cairo-Anna Unit 3HRB	North Reference:	Grid
Wellbore:	Original Wellpath	Survey Calculation Method:	Minimum Curvature
Design:	As Drilled	Database:	Oklahoma District

Survey								
MD (usft)	Inc (°)	Azi (azimuth) (°)	TVD (usft)	N/S (usft)	E/W (usft)	V. Sec (usft)	DLeg (°/100usft)	
10,389.0	90.04	159.00	6,327.8	-3,516.6	2,005.3	4,010.3	2.76	
10,485.0	90.04	159.09	6,327.7	-3,606.3	2,039.7	4,106.3	0.09	
10,580.0	90.04	158.21	6,327.6	-3,694.7	2,074.3	4,201.3	0.93	
10,675.0	90.31	158.65	6,327.4	-3,783.1	2,109.2	4,296.3	0.54	
10,769.0	88.90	157.77	6,328.0	-3,870.4	2,144.1	4,390.3	1.77	
10,863.0	88.64	157.33	6,330.0	-3,957.2	2,180.0	4,484.3	0.54	
10,959.0	89.25	158.92	6,331.8	-4,046.3	2,215.7	4,580.3	1.77	
11,052.0	88.90	158.30	6,333.3	-4,132.9	2,249.6	4,673.2	0.77	
11,146.0	88.86	158.29	6,335.1	-4,220.2	2,284.4	4,767.2	0.04	
11,240.0	89.16	158.56	6,336.8	-4,307.6	2,319.0	4,861.2	0.43	
11,334.0	90.23	158.34	6,337.3	-4,395.0	2,353.5	4,955.2	1.16	
11,429.0	90.10	156.91	6,337.0	-4,482.9	2,389.7	5,050.2	1.51	
11,523.0	90.66	155.40	6,336.4	-4,568.8	2,427.6	5,144.1	1.71	
11,617.0	90.13	153.82	6,335.7	-4,653.8	2,468.0	5,238.0	1.77	
11,711.0	90.48	155.66	6,335.2	-4,738.8	2,508.1	5,331.8	1.99	
11,806.0	90.48	158.04	6,334.4	-4,826.1	2,545.4	5,426.8	2.51	
11,900.0	90.84	157.95	6,333.3	-4,913.3	2,580.6	5,520.7	0.39	
11,995.0	90.40	159.79	6,332.3	-5,001.9	2,614.9	5,615.7	1.99	
12,089.0	90.48	160.06	6,331.6	-5,090.1	2,647.1	5,709.7	0.30	
12,183.0	89.87	159.62	6,331.3	-5,178.4	2,679.5	5,803.6	0.80	
12,278.0	88.99	159.53	6,332.2	-5,267.4	2,712.7	5,898.6	0.93	
12,372.0	89.16	159.11	6,333.8	-5,355.3	2,745.9	5,992.6	0.48	
12,466.0	90.27	159.11	6,334.2	-5,443.2	2,779.4	6,086.6	1.18	
12,560.0	90.13	158.83	6,333.9	-5,530.9	2,813.1	6,180.5	0.33	
12,656.0	89.78	159.09	6,334.0	-5,620.5	2,847.6	6,276.5	0.45	
12,750.0	90.92	158.39	6,333.4	-5,708.1	2,881.7	6,370.5	1.42	
12,844.0	91.19	157.16	6,331.7	-5,795.1	2,917.2	6,464.5	1.34	
12,939.0	90.13	158.04	6,330.6	-5,882.9	2,953.4	6,559.5	1.45	
13,034.0	89.78	158.12	6,330.6	-5,971.0	2,988.9	6,654.5	0.38	
13,128.0	89.69	157.16	6,331.1	-6,058.0	3,024.6	6,748.5	1.03	
13,222.0	90.57	157.16	6,330.9	-6,144.6	3,061.1	6,842.5	0.94	
13,316.0	90.57	156.72	6,329.9	-6,231.1	3,097.9	6,936.4	0.47	
13,411.0	89.78	158.48	6,329.6	-6,318.9	3,134.1	7,031.4	2.03	
13,505.0	90.40	158.56	6,329.5	-6,406.4	3,168.6	7,125.4	0.67	
13,599.0	90.13	157.42	6,329.1	-6,493.5	3,203.8	7,219.4	1.25	
13,694.0	90.57	159.71	6,328.5	-6,582.0	3,238.5	7,314.4	2.45	
13,787.0	90.75	158.38	6,327.4	-6,668.8	3,271.8	7,407.4	1.44	
13,882.0	88.99	158.39	6,327.6	-6,757.1	3,306.8	7,502.4	1.85	
13,976.0	88.55	157.69	6,329.6	-6,844.3	3,341.9	7,596.4	0.88	
14,070.0	89.34	158.04	6,331.4	-6,931.3	3,377.3	7,690.4	0.92	
14,164.0	90.84	158.39	6,331.2	-7,018.6	3,412.2	7,784.4	1.64	
14,258.0	90.75	157.42	6,329.9	-7,105.7	3,447.5	7,878.3	1.04	
14,352.0	91.01	156.98	6,328.5	-7,192.3	3,484.0	7,972.3	0.54	
14,447.0	90.84	156.81	6,326.9	-7,279.7	3,521.2	8,067.3	0.25	

Received
Office of Oil & Gas
SEP 21 2015

85.10015



EOW Completion Report



Company:	Antero Resources	Local Co-ordinate Reference:	Well Cairo-Anna Unit 3HRB
Project:	Ritchie County WV	TVD Reference:	Hall: 970' + 13' @ 983.0usft
Site:	Anna Pad	MD Reference:	Hall: 970' + 13' @ 983.0usft
Well:	Cairo-Anna Unit 3HRB	North Reference:	Grid
Wellbore:	Original Wellpath	Survey Calculation Method:	Minimum Curvature
Design:	As Drilled	Database:	Oklahoma District

Survey								
MD (usft)	Inc (°)	Azi (azimuth) (°)	TVD (usft)	N/S (usft)	E/W (usft)	V. Sec (usft)	DLeg (°/100usft)	
14,541.0	90.84	156.02	6,325.6	-7,365.9	3,558.9	8,161.2	0.84	
14,629.0	90.84	156.02	6,324.3	-7,446.3	3,594.6	8,249.2	0.00	
14,692.0	90.84	156.02	6,323.4	-7,503.8	3,620.2	8,312.1	0.00	

Design Annotations					
Measured Depth (usft)	Vertical Depth (usft)	Local Coordinates		Comment	
		+N/-S (usft)	+E/-W (usft)		
6,155.0	6,024.8	193.7	297.3	SCMR	
6,324.0	6,129.3	156.6	423.0	MDLX	
6,514.0	6,234.9	51.4	539.5	BRKT	
6,602.0	6,269.0	-12.9	588.6	TLLY	
6,686.0	6,294.0	-83.5	626.5	MARCL_HOT	

Checked By: _____ Approved By: _____ Date: _____

Received
Office of Oil & Gas
SEP 21 2015