



RECEIVED  
Office of Oil and Gas

Antero Resources  
MAY 26 2015

Ritchie County WV  
Allstate Unit 2H  
Easting: 1673186.80  
Northing: 1233108.91  
ENVAS Drilled

**WELL DETAILS:** Allstate Unit 2H

+N-S	+E-W	Northing	Easting	Latitude	Longitude
0.0	0.0	14233108.91	1673186.8039	11° 43.492' N	80° 53' 3.603" W

Slot

**PROJECT DETAILS:** Ritchie County WV

Geodetic System: Universal Transverse Mercator (US Survey Feet)  
Datum: NAD 1983 (NAD80 CONUS)  
Ellipsoid: Clarke 1866  
Zone: Zone 17N (84 W to 78 W)  
System Datum: Mean Sea Level

**REFERENCE INFORMATION**

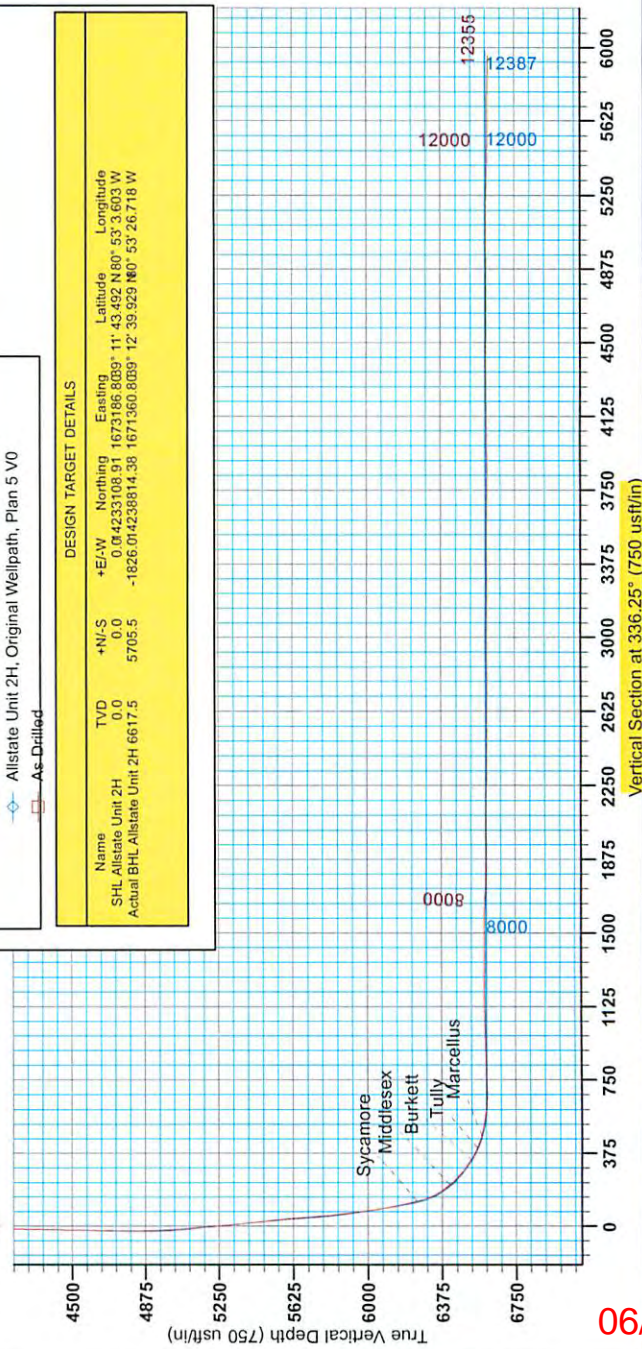
Coordinate N/E/S Reference: Well Allstate Unit 2H, O&G North  
Vertical (VD) Reference: Forster 25, 1432.01 + 2E RAB @ 1170 Out  
Measured Depth Reference: Forster 25, 1432.01 + 2E RAB @ 1170 Out  
Calculation Method: Minimum Curvature

Genie Lightfoot  
9.05, February 05 2014  
Scientific Drilling  
421 South Eagle Lane  
Oklahoma City, OK

- LEGEND**
- Nicholson Unit 2H, Original Wellpath, As Drilled V0
  - Nicholson Unit 1H, Original Wellpath, As Drilled V0
  - O'Neil Unit 2H, Original Wellpath, As Drilled V0
  - △— O'Neil Unit 1H, Original Wellpath, As Drilled V0
  - ◇— Allstate Unit 2H, Original Wellpath, Plan 5 V0
  - As-Drilled

**DESIGN TARGET DETAILS**

Name	TVD	+N-S	+E/W	Northing	Easting	Latitude	Longitude
SHL Allstate Unit 2H	0.0	0.0	0.0	0.0	0.0	0.0	0.0
Actual BHL Allstate Unit 2H	6617.5	5705.5	-1826.0	1233108.91	1673186.8039	11° 43.492' N	80° 53' 3.603" W

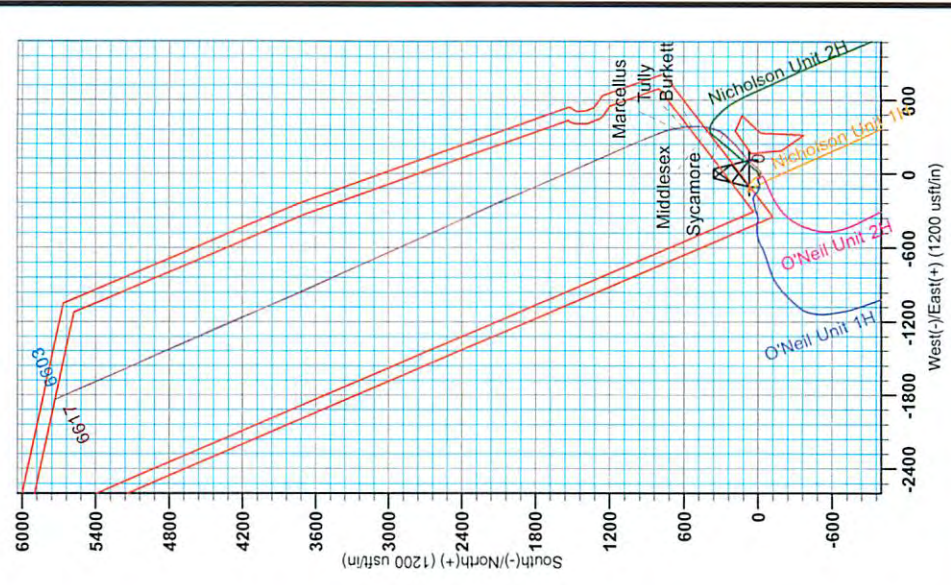


06/05/2015

To convert Magnetic North to Grid, Subtract 8.43°  
To convert True North to Grid, Subtract 0.07°

Azimuths to Grid North  
True North: -0.07°  
Magnetic North: -8.43°

Magnetic Field  
Strength: 52322.2 nT  
Dip Angle: 66.80°  
Year: 2015  
Model: IGRF2010





# Antero Resources

Ritchie County WV  
Yolanda Pad / Nicholson/O'Neil/McCabe/Allstate  
Allstate Unit 2H  
Original Wellpath

Design: As Drilled

## EOW Completion Report

05 February, 2014

RECEIVED  
Office of Oil and Gas

MAY 26 2015



06/05/2015

<b>Company:</b>	Antero Resources	<b>Local Co-ordinate Reference:</b>	Well Allstate Unit 2H
<b>Project:</b>	Ritchie County WV	<b>TVD Reference:</b>	Frontier 25: 1142' GL + 28' RKB @ 1170.0usft
<b>Site:</b>	Yolanda Pad / Nicholson/O'Neil/McCabe/Allstate	<b>MD Reference:</b>	Frontier 25: 1142' GL + 28' RKB @ 1170.0usft
<b>Well:</b>	Allstate Unit 2H	<b>North Reference:</b>	Grid
<b>Wellbore:</b>	Original Wellpath	<b>Survey Calculation Method:</b>	Minimum Curvature
<b>Design:</b>	As Drilled	<b>Database:</b>	Oklahoma District

<b>Project</b>	Ritchie County WV, Ritchie County WV, WV North		
<b>Map System:</b>	Universal Transverse Mercator (US Survey Fee	<b>System Datum:</b>	Mean Sea Level
<b>Geo Datum:</b>	NAD 1927 (NADCON CONUS)		
<b>Map Zone:</b>	Zone 17N (84 W to 78 W)		

<b>Site</b>	Yolanda Pad / Nicholson/O'Neil/McCabe/Allstate				
<b>Site Position:</b>	<b>Northing:</b>	14,233,110.41 usft	<b>Latitude:</b>	39° 11' 43.507 N	
<b>From:</b> Map	<b>Easting:</b>	1,673,156.78 usft	<b>Longitude:</b>	80° 53' 3.984 W	
<b>Position Uncertainty:</b>	2.0 usft	<b>Slot Radius:</b>	13-3/16"	<b>Grid Convergence:</b>	0.07 °

<b>Well</b>	Allstate Unit 2H, Marcellus					
<b>Well Position</b>	<b>+N/-S</b>	0.0 usft	<b>Northing:</b>	14,233,108.91 usft	<b>Latitude:</b>	39° 11' 43.492 N
	<b>+E/-W</b>	0.0 usft	<b>Easting:</b>	1,673,186.80 usft	<b>Longitude:</b>	80° 53' 3.603 W
<b>Position Uncertainty</b>	2.0 usft	<b>Wellhead Elevation:</b>	1,170.0 usft	<b>Ground Level:</b>	1,142.0 usft	

<b>Wellbore</b>	Original Wellpath
-----------------	-------------------

Magnetics	Model Name	Sample Date	Declination (°)	Dip Angle (°)	Field Strength (nT)
	IGRF2010	12/5/2013	-8.36	66.80	52,322

<b>Design</b>	As Drilled
---------------	------------

<b>Audit Notes:</b>					
<b>Version:</b>	1.0	<b>Phase:</b>	ACTUAL	<b>Tie On Depth:</b>	0.0
<b>Vertical Section:</b>	<b>Depth From (TVD) (usft)</b>	<b>+N/-S (usft)</b>	<b>+E/-W (usft)</b>	<b>Direction (°)</b>	
	0.0	0.0	0.0	336.25	

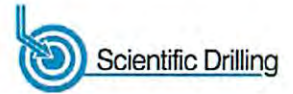
<b>Survey Program</b>	<b>Date</b>	2/5/2014			
From (usft)	To (usft)	Survey (Wellbore)	Tool Name	Description	
100.0	4,600.0	Survey #6 Definitive Survey to KOP (Orig	SDI Standard Keeper	Scientific Drilling Intl. Standard Wireline Keeper	
4,724.0	12,355.0	Survey #5 MWD (Original Wellpath)	MWD SDI	MWD - Standard ver 1.0.1	

MD (usft)	Inc (°)	Azi (azimuth) (°)	TVD (usft)	N/S (usft)	E/W (usft)	V. Sec (usft)	DLeg (°/100usft)
0.0	0.00	0.00	0.0	0.0	0.0	0.0	0.00
100.0	0.06	272.10	100.0	0.0	-0.1	0.0	0.06
200.0	0.22	216.79	200.0	-0.1	-0.2	0.0	0.19
300.0	0.10	254.72	300.0	-0.3	-0.4	-0.1	0.15
400.0	0.34	191.79	400.0	-0.6	-0.6	-0.4	0.31
500.0	0.26	144.92	500.0	-1.1	-0.5	-0.8	0.25
600.0	0.42	141.39	600.0	-1.6	-0.1	-1.4	0.16
700.0	0.34	168.44	700.0	-2.2	0.2	-2.0	0.19
800.0	0.55	146.46	800.0	-2.9	0.5	-2.8	0.27
900.0	0.26	163.74	900.0	-3.5	0.8	-3.5	0.31
1,000.0	0.46	144.65	1,000.0	-4.0	1.1	-4.1	0.23

RECEIVED  
Office of Oil and Gas  
MAY 26 2015  
WV Department of  
Environmental Protection



EOW Completion Report



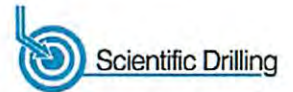
<b>Company:</b>	Antero Resources	<b>Local Co-ordinate Reference:</b>	Well Allstate Unit 2H
<b>Project:</b>	Ritchie County WV	<b>TVD Reference:</b>	Frontier 25: 1142' GL + 28' RKB @ 1170.0usft
<b>Site:</b>	Yolanda Pad / Nicholson/O'Neil/McCabe/Allstate	<b>MD Reference:</b>	Frontier 25: 1142' GL + 28' RKB @ 1170.0usft
<b>Well:</b>	Allstate Unit 2H	<b>North Reference:</b>	Grid
<b>Wellbore:</b>	Original Wellpath	<b>Survey Calculation Method:</b>	Minimum Curvature
<b>Design:</b>	As Drilled	<b>Database:</b>	Oklahoma District

Survey								
MD (usft)	Inc (°)	Azi (azimuth) (°)	TVD (usft)	N/S (usft)	E/W (usft)	V. Sec (usft)	DLeg (°/100usft)	
1,100.0	0.49	159.65	1,100.0	-4.7	1.5	-4.9	0.13	
1,200.0	0.53	148.33	1,200.0	-5.5	1.9	-5.8	0.11	
1,300.0	0.35	168.17	1,300.0	-6.2	2.2	-6.6	0.23	
1,400.0	0.49	162.58	1,400.0	-6.9	2.4	-7.3	0.15	
1,500.0	0.72	163.91	1,500.0	-8.0	2.7	-8.4	0.23	
1,600.0	0.61	169.48	1,600.0	-9.1	2.9	-9.5	0.13	
1,700.0	0.53	167.49	1,700.0	-10.1	3.1	-10.5	0.08	
1,800.0	0.66	168.60	1,800.0	-11.1	3.4	-11.5	0.13	
1,900.0	0.65	155.94	1,899.9	-12.2	3.7	-12.6	0.14	
2,000.0	0.58	178.51	1,999.9	-13.2	3.9	-13.7	0.25	
2,100.0	0.60	173.65	2,099.9	-14.2	4.0	-14.6	0.05	
2,200.0	0.71	184.75	2,199.9	-15.3	4.0	-15.7	0.17	
2,300.0	0.38	184.69	2,299.9	-16.3	3.9	-16.5	0.33	
2,400.0	0.61	207.93	2,399.9	-17.1	3.7	-17.1	0.30	
2,500.0	0.34	219.68	2,499.9	-17.8	3.2	-17.6	0.29	
2,600.0	0.37	247.79	2,599.9	-18.1	2.7	-17.7	0.17	
2,700.0	0.37	257.45	2,699.9	-18.3	2.1	-17.6	0.06	
2,800.0	0.32	262.78	2,799.9	-18.4	1.5	-17.5	0.06	
2,900.0	0.48	266.11	2,899.9	-18.5	0.8	-17.3	0.16	
3,000.0	0.51	259.67	2,999.9	-18.6	0.0	-17.0	0.06	
3,100.0	0.47	259.88	3,099.9	-18.8	-0.9	-16.8	0.04	
3,200.0	0.53	261.51	3,199.9	-18.9	-1.7	-16.6	0.06	
3,300.0	0.43	268.84	3,299.9	-19.0	-2.6	-16.3	0.12	
3,400.0	0.41	258.86	3,399.9	-19.1	-3.3	-16.1	0.08	
3,500.0	0.37	264.57	3,499.9	-19.2	-3.9	-15.9	0.06	
3,600.0	0.38	277.70	3,599.9	-19.1	-4.6	-15.7	0.09	
3,700.0	0.30	261.84	3,699.9	-19.1	-5.2	-15.4	0.12	
3,800.0	0.36	255.52	3,799.9	-19.2	-5.8	-15.1	0.07	
3,900.0	0.39	251.80	3,899.9	-19.4	-6.4	-14.8	0.04	
4,000.0	0.27	237.31	3,999.9	-19.7	-6.9	-14.5	0.15	
4,100.0	0.36	202.56	4,099.9	-20.1	-7.2	-14.2	0.21	
4,200.0	0.42	181.81	4,199.9	-20.7	-7.4	-13.9	0.15	
4,300.0	0.48	156.41	4,299.9	-21.5	-7.2	-13.6	0.21	
4,400.0	0.78	136.95	4,399.9	-22.4	-6.6	-13.3	0.36	
4,500.0	1.18	137.12	4,499.8	-23.6	-5.4	-13.0	0.40	
4,600.0	1.25	134.43	4,599.8	-25.1	-3.9	-12.7	0.09	
4,724.0	3.19	93.13	4,723.7	-26.3	0.5	-12.4	1.93	
4,819.0	4.86	75.08	4,818.5	-25.4	7.0	-12.1	2.19	
4,915.0	8.22	56.80	4,913.9	-20.6	16.7	-11.8	4.08	
5,008.0	10.59	44.68	5,005.6	-10.9	28.3	-11.5	3.31	
5,101.0	11.66	40.68	5,096.9	2.3	40.4	-11.2	1.42	
5,197.0	12.43	40.37	5,190.8	17.6	53.4	-10.9	0.80	
5,293.0	13.80	42.47	5,284.3	33.9	67.8	-10.6	1.51	
5,387.0	13.75	41.49	5,375.6	50.5	82.8	-10.3	0.25	

RECEIVED  
Office of Oil and Gas  
MAY 26 2015  
WV Department of Environmental Protection



EOW Completion Report

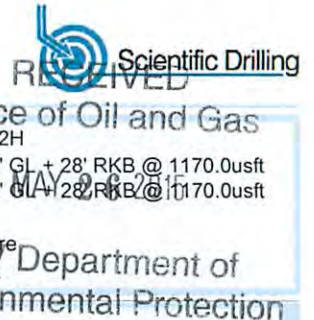


<b>Company:</b> Antero Resources	<b>Local Co-ordinate Reference:</b> Well Allstate Unit 2H	<b>RECEIVED</b> Office of Oil and Gas MAY 26 2015
<b>Project:</b> Ritchie County WV	<b>TVD Reference:</b> Frontier 25: 1142' RKB @ 1170.0usft	
<b>Site:</b> Yolanda Pad / Nicholson/O'Neil/McCabe/Allstate	<b>MD Reference:</b> Frontier 25: 1142' GL + 28' RKB @ 1170.0usft	
<b>Well:</b> Allstate Unit 2H	<b>North Reference:</b> Grid	
<b>Wellbore:</b> Original Wellpath	<b>Survey Calculation Method:</b> Minimum Curvature	
<b>Design:</b> As Drilled	<b>Database:</b> Oklahoma District	

WV Department of Environmental Protection									
MD (usft)	Inc (°)	Azi (azimuth) (°)	TVD (usft)	N/S (usft)	E/W (usft)	V. Sec (usft)	D Leg (°/100usft)		
5,483.0	14.78	39.37	5,468.6	68.5	98.1	23.2			1.20
5,578.0	16.58	42.47	5,560.1	87.9	115.0	34.2			2.09
5,673.0	17.18	53.11	5,651.0	106.3	135.4	42.8			3.31
5,769.0	18.70	54.41	5,742.3	123.8	159.2	49.2			1.64
5,801.0	20.31	54.24	5,772.5	130.0	167.9	51.4			5.03
5,833.0	21.28	52.92	5,802.4	136.8	177.0	53.9			3.37
5,865.0	23.04	50.98	5,832.0	144.2	186.5	56.9			5.96
5,897.0	23.04	50.37	5,861.5	152.2	196.2	60.2			0.75
5,929.0	24.45	48.44	5,890.8	160.5	206.0	64.0			5.03
5,961.0	24.62	47.82	5,919.9	169.4	215.9	68.1			0.96
5,993.0	24.27	47.47	5,949.0	178.3	225.7	72.3			1.18
6,056.0	24.89	46.94	6,006.3	196.1	244.9	80.9			1.04
6,087.0	25.00	46.78	6,034.4	205.1	254.5	85.2			0.42
6,119.0	25.76	44.83	6,063.3	214.6	264.3	90.0			3.53
6,183.0	25.41	43.34	6,121.0	234.5	283.5	100.5			1.14
6,215.0	25.15	43.25	6,150.0	244.4	292.9	105.8			0.82
6,247.0	26.12	41.40	6,178.8	254.7	302.2	111.4			3.93
6,278.0	26.29	41.40	6,206.6	264.9	311.3	117.2			0.55
6,310.0	27.00	37.45	6,235.2	276.0	320.4	123.6			5.96
6,326.0	28.04	35.49	6,249.4	282.0	324.7	127.3			8.62
<b>Sycamore</b>									
6,342.0	29.11	33.67	6,263.5	288.3	329.1	131.3			8.62
6,373.0	30.95	32.88	6,290.3	301.2	337.6	139.8			6.07
6,404.0	33.85	28.31	6,316.5	315.6	346.0	149.5			12.24
6,436.0	37.28	23.39	6,342.5	332.3	354.1	161.5			13.95
6,468.0	40.98	19.70	6,367.4	351.1	361.5	175.8			13.66
6,499.0	44.05	15.92	6,390.2	371.0	367.9	191.4			12.88
6,531.0	46.20	12.53	6,412.8	393.0	373.4	209.3			10.07
6,533.0	46.36	12.34	6,414.2	394.4	373.7	210.5			10.38
<b>Middlesex</b>									
6,563.0	48.72	9.59	6,434.4	416.1	377.9	228.7			10.38
6,595.0	50.91	6.78	6,455.1	440.3	381.4	249.4			9.58
6,627.0	53.02	3.08	6,474.8	465.4	383.6	271.5			11.24
6,659.0	55.40	0.27	6,493.5	491.4	384.3	295.0			10.30
6,691.0	58.30	358.07	6,511.0	518.2	383.9	319.7			10.74
6,717.0	61.25	355.93	6,524.1	540.6	382.7	340.7			13.39
<b>Burkett</b>									
6,722.0	61.82	355.53	6,526.5	545.0	382.4	344.8			13.39
6,754.0	64.37	353.42	6,541.0	573.4	379.7	371.9			9.90
6,786.0	66.83	351.92	6,554.2	602.3	375.9	399.9			8.79
6,789.0	67.18	351.80	6,555.3	605.0	375.5	402.5			12.07
<b>Tully</b>									
6,818.0	70.52	350.69	6,565.8	631.7	371.4	428.6			12.07
6,850.0	74.66	349.20	6,575.4	661.8	366.1	458.3			13.68



EOW Completion Report



<b>Company:</b>	Antero Resources	<b>Local Co-ordinate Reference:</b>	Well Allstate Unit 2H
<b>Project:</b>	Ritchie County WV	<b>TVD Reference:</b>	Frontier 25: 1142' GL + 28' RKB @ 1170.0usft
<b>Site:</b>	Yolanda Pad / Nicholson/O'Neil/McCabe/Allstate	<b>MD Reference:</b>	Frontier 25: 1142' GL + 28' RKB @ 1170.0usft
<b>Well:</b>	Allstate Unit 2H	<b>North Reference:</b>	Grid
<b>Wellbore:</b>	Original Wellpath	<b>Survey Calculation Method:</b>	Minimum Curvature
<b>Design:</b>	As Drilled	<b>Database:</b>	Oklahoma District

Survey

MD (usft)	Inc (°)	Azi (azimuth) (°)	TVD (usft)	N/S (usft)	E/W (usft)	V. Sec (usft)	DLeg (°/100usft)
6,855.0	75.07	348.91	6,576.7	666.5	365.2	463.0	9.95
<b>Marcellus</b>							
6,882.0	77.29	347.35	6,583.1	692.2	359.8	488.7	9.95
6,914.0	79.67	345.42	6,589.5	722.6	352.4	519.5	9.50
6,946.0	81.60	343.75	6,594.7	753.1	344.0	550.8	7.93
6,978.0	83.54	341.46	6,598.9	783.4	334.5	582.3	9.33
7,025.0	88.22	338.04	6,602.3	827.3	318.3	629.1	12.32
7,089.0	90.40	336.89	6,603.0	886.4	293.8	693.0	3.85
7,120.0	91.10	338.03	6,602.6	915.1	281.9	724.0	4.32
7,215.0	91.54	338.03	6,600.4	1,003.1	246.4	819.0	0.46
7,311.0	91.28	335.22	6,598.1	1,091.2	208.3	914.9	2.94
7,405.0	91.36	334.87	6,595.9	1,176.4	168.6	1,008.9	0.38
7,502.0	91.80	334.87	6,593.2	1,264.2	127.5	1,105.8	0.45
7,597.0	90.84	335.13	6,591.0	1,350.3	87.3	1,200.8	1.05
7,693.0	89.34	337.24	6,590.9	1,438.1	48.6	1,296.7	2.70
7,787.0	88.99	335.93	6,592.3	1,524.3	11.2	1,390.7	1.44
7,882.0	89.87	337.24	6,593.2	1,611.5	-26.5	1,485.7	1.66
7,977.0	89.16	336.98	6,594.0	1,699.0	-63.5	1,580.7	0.80
8,072.0	87.41	335.93	6,596.8	1,786.1	-101.4	1,675.7	2.15
8,168.0	88.64	336.80	6,600.2	1,874.0	-139.9	1,771.6	1.57
8,264.0	89.34	338.21	6,601.8	1,962.6	-176.6	1,867.6	1.64
8,359.0	88.99	338.03	6,603.2	2,050.8	-212.0	1,962.5	0.41
8,454.0	89.60	335.66	6,604.4	2,138.1	-249.4	2,057.5	2.58
8,549.0	90.22	335.57	6,604.6	2,224.7	-288.6	2,152.5	0.66
8,644.0	90.75	335.49	6,603.7	2,311.1	-327.9	2,247.5	0.56
8,739.0	89.08	334.43	6,603.9	2,397.2	-368.1	2,342.4	2.08
8,834.0	89.16	334.43	6,605.3	2,482.9	-409.1	2,437.4	0.08
8,929.0	89.43	335.49	6,606.5	2,568.9	-449.3	2,532.3	1.15
9,025.0	89.60	337.51	6,607.3	2,657.0	-487.6	2,628.3	2.11
9,121.0	89.69	337.51	6,607.9	2,745.7	-524.3	2,724.3	0.09
9,216.0	89.60	336.63	6,608.5	2,833.2	-561.3	2,819.3	0.93
9,310.0	89.96	336.54	6,608.9	2,919.4	-598.7	2,913.3	0.39
9,404.0	90.13	336.19	6,608.8	3,005.5	-636.4	3,007.3	0.41
9,497.0	90.22	336.10	6,608.5	3,090.6	-674.0	3,100.3	0.14
9,591.0	90.22	335.22	6,608.2	3,176.2	-712.7	3,194.3	0.94
9,686.0	89.96	336.10	6,608.0	3,262.8	-751.9	3,289.3	0.97
9,780.0	89.78	335.31	6,608.2	3,348.5	-790.6	3,383.3	0.86
9,874.0	89.96	335.05	6,608.4	3,433.8	-830.0	3,477.3	0.34
9,969.0	90.13	334.43	6,608.4	3,519.7	-870.6	3,572.2	0.68
10,063.0	89.16	336.89	6,608.9	3,605.3	-909.3	3,666.2	2.81
10,158.0	89.16	336.63	6,610.3	3,692.6	-946.8	3,761.2	0.27
10,252.0	90.31	337.77	6,610.8	3,779.3	-983.2	3,855.2	1.72
10,346.0	90.22	335.84	6,610.3	3,865.7	-1,020.2	3,949.2	2.06
10,441.0	90.04	337.33	6,610.1	3,952.8	-1,058.0	4,044.2	1.58
10,534.0	92.07	339.35	6,608.4	4,039.2	-1,092.3	4,137.1	3.08

<b>Company:</b>	Antero Resources	<b>Local Co-ordinate Reference:</b>	Well Allstate Unit 2H
<b>Project:</b>	Ritchie County WV	<b>TVD Reference:</b>	Frontier 25: 1142' GL + 28' RKB @ 1170.0usft
<b>Site:</b>	Yolanda Pad / Nicholson/O'Neil/McCabe/Allstate	<b>MD Reference:</b>	Frontier 25: 1142' GL + 28' RKB @ 1170.0usft
<b>Well:</b>	Allstate Unit 2H	<b>North Reference:</b>	Grid
<b>Wellbore:</b>	Original Wellpath	<b>Survey Calculation Method:</b>	Minimum Curvature
<b>Design:</b>	As Drilled	<b>Database:</b>	Oklahoma District

MD (usft)	Inc (°)	Azi (azimuth) (°)	TVD (usft)	N/S (usft)	E/W (usft)	V. Sec (usft)	DLeg (°/100usft)
10,630.0	90.92	338.30	6,605.9	4,128.7	-1,127.0	4,232.9	1.62
10,724.0	90.04	336.72	6,605.1	4,215.6	-1,162.9	4,326.9	1.92
10,818.0	89.69	336.10	6,605.3	4,301.7	-1,200.5	4,420.9	0.76
10,912.0	89.78	336.10	6,605.8	4,387.6	-1,238.6	4,514.9	0.10
11,007.0	89.87	336.28	6,606.1	4,474.6	-1,277.0	4,609.9	0.21
11,101.0	89.69	336.10	6,606.4	4,560.6	-1,314.9	4,703.9	0.27
11,195.0	90.04	335.93	6,606.6	4,646.4	-1,353.1	4,797.9	0.41
11,290.0	90.13	335.49	6,606.5	4,733.0	-1,392.2	4,892.9	0.47
11,385.0	90.57	335.05	6,605.9	4,819.3	-1,431.9	4,987.9	0.65
11,480.0	90.92	335.75	6,604.7	4,905.7	-1,471.5	5,082.9	0.82
11,575.0	88.90	335.49	6,604.8	4,992.2	-1,510.7	5,177.9	2.14
11,665.0	88.20	336.45	6,607.1	5,074.4	-1,547.3	5,267.8	1.32
11,755.0	88.55	336.19	6,609.7	5,156.8	-1,583.5	5,357.8	0.48
11,845.0	88.99	336.54	6,611.6	5,239.2	-1,619.5	5,447.8	0.62
11,935.0	89.43	336.63	6,612.8	5,321.8	-1,655.3	5,537.8	0.50
12,026.0	90.31	336.37	6,613.0	5,405.2	-1,691.6	5,628.8	1.01
12,116.0	89.25	336.54	6,613.4	5,487.7	-1,727.5	5,718.8	1.19
12,207.0	89.16	335.84	6,614.7	5,571.0	-1,764.3	5,809.7	0.78
12,297.0	88.81	335.13	6,616.2	5,652.9	-1,801.6	5,899.7	0.88
12,355.0	88.81	335.13	6,617.5	5,705.5	-1,826.0	5,957.7	0.00

Measured Depth (usft)	Vertical Depth (usft)	Local Coordinates		Comment
		+N/-S (usft)	+E/-W (usft)	
6,326.0	6,249.4	282.0	324.7	Sycamore
6,533.0	6,414.2	394.4	373.7	Middlesex
6,717.0	6,524.1	540.6	382.7	Burkett
6,789.0	6,555.3	605.0	375.5	Tully
6,855.0	6,576.7	666.5	365.2	Marcellus

Checked By: \_\_\_\_\_ Approved By: \_\_\_\_\_ Date: \_\_\_\_\_

RECEIVED  
Office of Oil and Gas  
MAY 26 2015  
WV Department of  
Environmental Protection