



Antero Resources
 Constable Unit 1H
 Ritchie County WV
 Northing: 14231532.79
 Easting: 1671480.50
 As Drilled ST1

WELL DETAILS: Constable Unit 1H

+N/-S	+E/-W	Northing	Ground Level	1142.0
0.0	0.0	14231532.79	Easting	1671480.5039° 11.271928 N80° 53.23308 W
			Latitude	
			Longitude	
			Spot	

PROJECT DETAILS: Ritchie County WV

Geologic System: Unconsolidated Tertiary Meander (US Survey Feet)
 Datum: NAD 83 / USCSN (CONUS)
 Elevation: China 1986
 Zone: Zone 17N (84 W to 78 W)
 System Datum: Mean Sea Level

RESISTANCE INFORMATION

Contract (N2) Reference: Final Constable Unit 1H, 04/18/13
 Well (V2) Reference: Constable Unit 1H, 04/18/13
 Well (V3) Reference: Constable Unit 1H, 04/18/13
 Well (V4) Reference: Constable Unit 1H, 04/18/13
 Well (V5) Reference: Constable Unit 1H, 04/18/13
 Well (V6) Reference: Constable Unit 1H, 04/18/13
 Well (V7) Reference: Constable Unit 1H, 04/18/13
 Well (V8) Reference: Constable Unit 1H, 04/18/13
 Well (V9) Reference: Constable Unit 1H, 04/18/13
 Well (V10) Reference: Constable Unit 1H, 04/18/13
 Well (V11) Reference: Constable Unit 1H, 04/18/13
 Well (V12) Reference: Constable Unit 1H, 04/18/13
 Well (V13) Reference: Constable Unit 1H, 04/18/13
 Well (V14) Reference: Constable Unit 1H, 04/18/13
 Well (V15) Reference: Constable Unit 1H, 04/18/13
 Well (V16) Reference: Constable Unit 1H, 04/18/13
 Well (V17) Reference: Constable Unit 1H, 04/18/13
 Well (V18) Reference: Constable Unit 1H, 04/18/13
 Well (V19) Reference: Constable Unit 1H, 04/18/13
 Well (V20) Reference: Constable Unit 1H, 04/18/13
 Well (V21) Reference: Constable Unit 1H, 04/18/13
 Well (V22) Reference: Constable Unit 1H, 04/18/13
 Well (V23) Reference: Constable Unit 1H, 04/18/13
 Well (V24) Reference: Constable Unit 1H, 04/18/13
 Well (V25) Reference: Constable Unit 1H, 04/18/13
 Well (V26) Reference: Constable Unit 1H, 04/18/13
 Well (V27) Reference: Constable Unit 1H, 04/18/13
 Well (V28) Reference: Constable Unit 1H, 04/18/13
 Well (V29) Reference: Constable Unit 1H, 04/18/13
 Well (V30) Reference: Constable Unit 1H, 04/18/13
 Well (V31) Reference: Constable Unit 1H, 04/18/13
 Well (V32) Reference: Constable Unit 1H, 04/18/13
 Well (V33) Reference: Constable Unit 1H, 04/18/13
 Well (V34) Reference: Constable Unit 1H, 04/18/13
 Well (V35) Reference: Constable Unit 1H, 04/18/13
 Well (V36) Reference: Constable Unit 1H, 04/18/13
 Well (V37) Reference: Constable Unit 1H, 04/18/13
 Well (V38) Reference: Constable Unit 1H, 04/18/13
 Well (V39) Reference: Constable Unit 1H, 04/18/13
 Well (V40) Reference: Constable Unit 1H, 04/18/13
 Well (V41) Reference: Constable Unit 1H, 04/18/13
 Well (V42) Reference: Constable Unit 1H, 04/18/13
 Well (V43) Reference: Constable Unit 1H, 04/18/13
 Well (V44) Reference: Constable Unit 1H, 04/18/13
 Well (V45) Reference: Constable Unit 1H, 04/18/13
 Well (V46) Reference: Constable Unit 1H, 04/18/13
 Well (V47) Reference: Constable Unit 1H, 04/18/13
 Well (V48) Reference: Constable Unit 1H, 04/18/13
 Well (V49) Reference: Constable Unit 1H, 04/18/13
 Well (V50) Reference: Constable Unit 1H, 04/18/13
 Well (V51) Reference: Constable Unit 1H, 04/18/13
 Well (V52) Reference: Constable Unit 1H, 04/18/13
 Well (V53) Reference: Constable Unit 1H, 04/18/13
 Well (V54) Reference: Constable Unit 1H, 04/18/13
 Well (V55) Reference: Constable Unit 1H, 04/18/13
 Well (V56) Reference: Constable Unit 1H, 04/18/13
 Well (V57) Reference: Constable Unit 1H, 04/18/13
 Well (V58) Reference: Constable Unit 1H, 04/18/13
 Well (V59) Reference: Constable Unit 1H, 04/18/13
 Well (V60) Reference: Constable Unit 1H, 04/18/13
 Well (V61) Reference: Constable Unit 1H, 04/18/13
 Well (V62) Reference: Constable Unit 1H, 04/18/13
 Well (V63) Reference: Constable Unit 1H, 04/18/13
 Well (V64) Reference: Constable Unit 1H, 04/18/13
 Well (V65) Reference: Constable Unit 1H, 04/18/13
 Well (V66) Reference: Constable Unit 1H, 04/18/13
 Well (V67) Reference: Constable Unit 1H, 04/18/13
 Well (V68) Reference: Constable Unit 1H, 04/18/13
 Well (V69) Reference: Constable Unit 1H, 04/18/13
 Well (V70) Reference: Constable Unit 1H, 04/18/13
 Well (V71) Reference: Constable Unit 1H, 04/18/13
 Well (V72) Reference: Constable Unit 1H, 04/18/13
 Well (V73) Reference: Constable Unit 1H, 04/18/13
 Well (V74) Reference: Constable Unit 1H, 04/18/13
 Well (V75) Reference: Constable Unit 1H, 04/18/13
 Well (V76) Reference: Constable Unit 1H, 04/18/13
 Well (V77) Reference: Constable Unit 1H, 04/18/13
 Well (V78) Reference: Constable Unit 1H, 04/18/13
 Well (V79) Reference: Constable Unit 1H, 04/18/13
 Well (V80) Reference: Constable Unit 1H, 04/18/13
 Well (V81) Reference: Constable Unit 1H, 04/18/13
 Well (V82) Reference: Constable Unit 1H, 04/18/13
 Well (V83) Reference: Constable Unit 1H, 04/18/13
 Well (V84) Reference: Constable Unit 1H, 04/18/13
 Well (V85) Reference: Constable Unit 1H, 04/18/13
 Well (V86) Reference: Constable Unit 1H, 04/18/13
 Well (V87) Reference: Constable Unit 1H, 04/18/13
 Well (V88) Reference: Constable Unit 1H, 04/18/13
 Well (V89) Reference: Constable Unit 1H, 04/18/13
 Well (V90) Reference: Constable Unit 1H, 04/18/13
 Well (V91) Reference: Constable Unit 1H, 04/18/13
 Well (V92) Reference: Constable Unit 1H, 04/18/13
 Well (V93) Reference: Constable Unit 1H, 04/18/13
 Well (V94) Reference: Constable Unit 1H, 04/18/13
 Well (V95) Reference: Constable Unit 1H, 04/18/13
 Well (V96) Reference: Constable Unit 1H, 04/18/13
 Well (V97) Reference: Constable Unit 1H, 04/18/13
 Well (V98) Reference: Constable Unit 1H, 04/18/13
 Well (V99) Reference: Constable Unit 1H, 04/18/13
 Well (V100) Reference: Constable Unit 1H, 04/18/13

Scientific Drilling

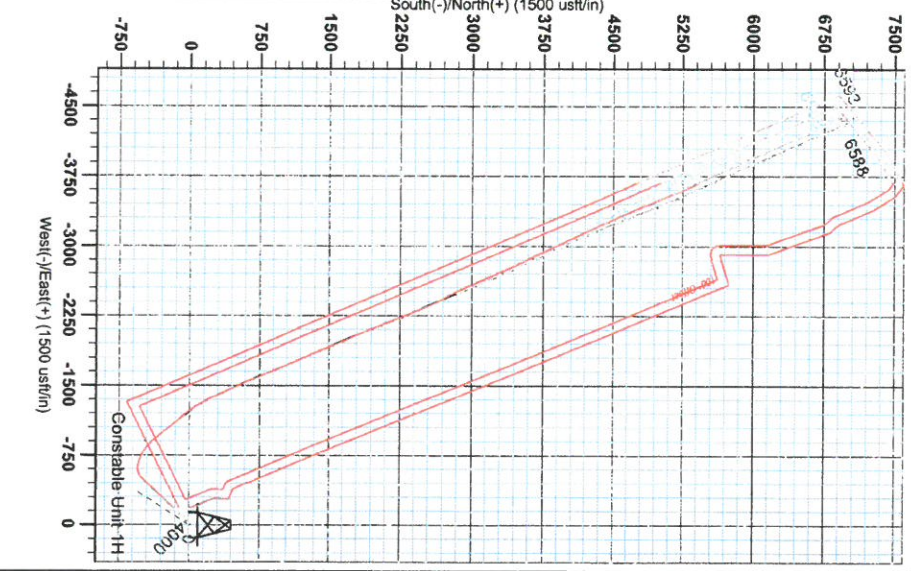
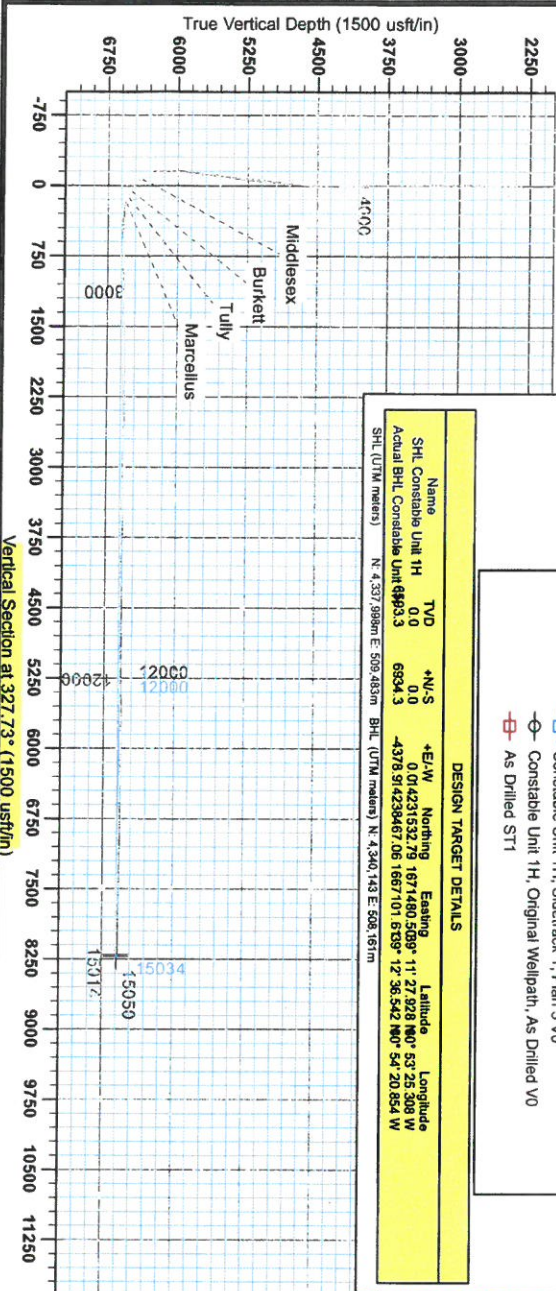
Gentle Lightfoot
 13:08, September 09 2013
 Scientific Drilling
 421 South Eagle Lane
 Oklahoma City, OK

LEGEND

- Constable Unit 1H, Sidetrack 1, Plan 3 V0
- Constable Unit 1H, Original Wellpath, As Drilled V0
- As Drilled ST1

DESIGN TARGET DETAILS

Name	TVD	+N/-S	+E/-W	Northing	Easting	Latitude	Longitude
SHL Constable Unit 1H	0.0	0.0	0.0	14231532.79	1671480.50	37° 23' 28.88" N	83° 23' 28.88" W
Actual BHL Constable Unit 1H	6934.3	-4378.91	4238467.06	1667101.8339	12.36.542 N00° 54' 20.834 W		
SHL (UTM meters)				N 4,307,899m E 509,485m	BHL (UTM meters) N 4,340,143 E 508,161m		



Asimuth to Grid North
 True North: -0.07°
 Magnetic North: -8.40°
 Magnetic Field
 Strength: 66.85T
 Dip Angle: 66.85°
 Date: 5/17/2013
 Model: IGRF2010

MORGANTOWN, WV
 GEOLOGICAL SURVEY
 MWM

3102 9 2 3ED

RECEIVED