

RECEIVED

JUN 23 2015

WV GEOLOGICAL SURVEY  
MORGANTOWN, WV



**Belle Unit 1H**  
**Ritchie County WV**  
**Northing: 14281132.87**  
**Easting: 1661480.69**  
**As Drilled**



**WELL DETAILS**  
Ground Level: 1004.0  
+N/-S 0.0    +E/-W 0.0  
Northing 14281132.87    Easting 1661480.69  
Latitude 39° 19' 38.461 N    Longitude 80° 55' 31.646 W

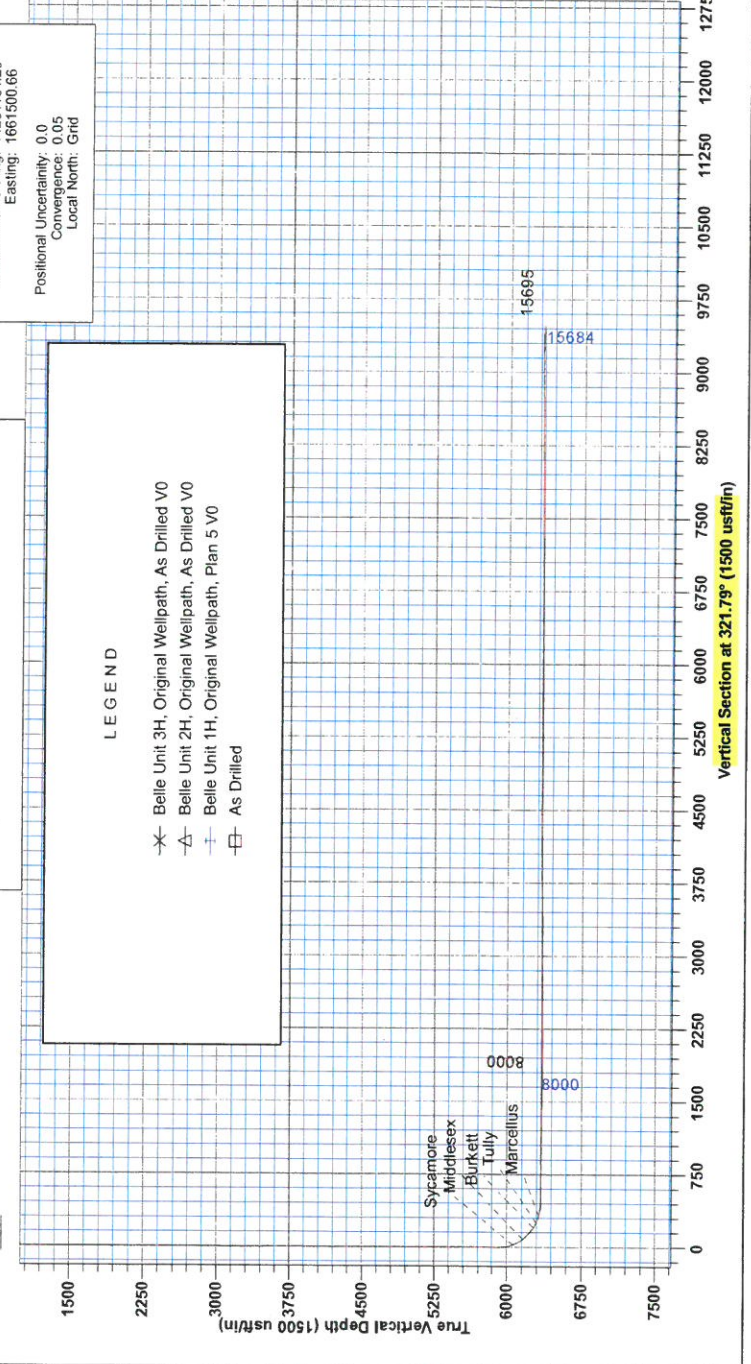
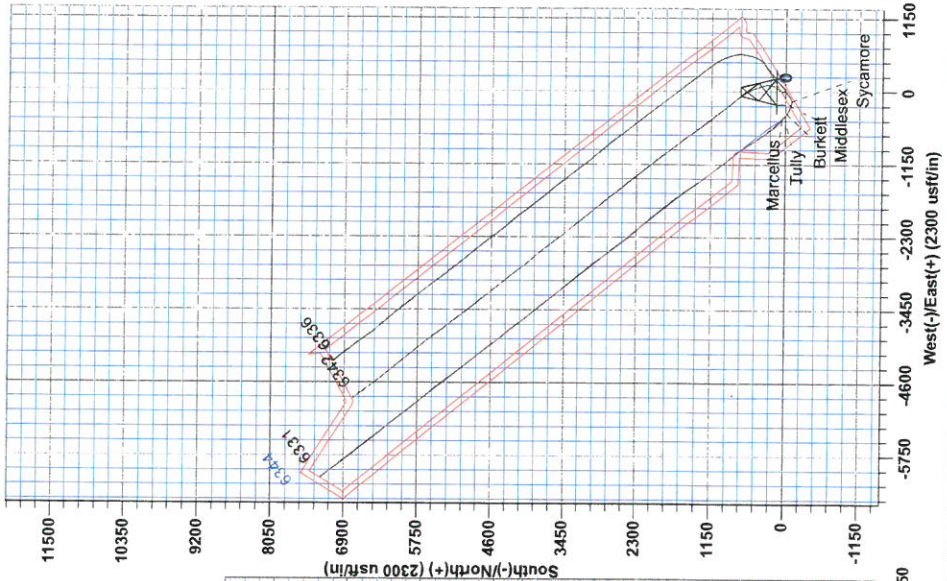
**PROJECT DETAILS: Ritchie County WV**  
Geodetic System: Universal Transverse Mercator (US Survey Feet)  
Datum: NAD 1927 (NADCON CONUS)  
Ellipsoid: Clarke 1866  
Zone: Zone 17N (84 W to 78 W)  
System Datum: Mean Sea Level

**LEGEND**  
-X- Belle Unit 3H, Original Wellpath, As Drilled V0  
-A- Belle Unit 2H, Original Wellpath, As Drilled V0  
-+ Belle Unit 1H, Original Wellpath, Plan 5 V0  
-□- As Drilled

Genie Lightfoot  
11.16, May 30 2014  
Scientific Drilling  
421 South Eanle Lane  
Oklahoma City, OK 73128

**SITE DETAILS: AnnieBelle Pad**  
Site Center  
Site Centre Northing: 14281134.20  
Easting: 1661500.66  
Positional Uncertainty: 0.0  
Convergence: 0.05  
Local North: Grid

Azimuths to Grid North  
True North: -0.05°  
Magnetic North: -8.48°  
Strength: 52302.6sNT  
Dip Angle: 66.90°  
Date: 5/5/2014  
Model: BCGM2013  
To convert Magnetic North to Grid, Subtract 8.48°  
To convert True North to Grid, Subtract 0.05°



Frontier 25 Belle Unit 1H GL 1004.0 25 RKB @ 1032.0usft  
1004.0



RECEIVED  
JUN 23 2015  
WV GEOLOGICAL SURVEY  
MORGANTOWN, WV

# Antero Resources

Ritchie County WV  
Annie/Belle Pad  
Belle Unit 1H  
Original Wellpath

Design: As Drilled

## EOW Completion Report

30 May, 2014



JUN 23 2015



EOW Completion Report



<b>Company:</b> Antero Resources	<b>Local Co-ordinate Reference:</b> Well Belle Unit 1H
<b>Project:</b> Ritchie County WV	<b>TVD Reference:</b> Frontier 25 Belle Unit 1H GL 1004 + 28' RKB @ 1
<b>Site:</b> Annie/Belle Pad	<b>MD Reference:</b> Frontier 25 Belle Unit 1H GL 1004 + 28' RKB @ 1
<b>Well:</b> Belle Unit 1H	<b>North Reference:</b> Grid
<b>Wellbore:</b> Original Wellpath	<b>Survey Calculation Method:</b> Minimum Curvature
<b>Design:</b> As Drilled	<b>Database:</b> Oklahoma District

<b>Project</b>	Ritchie County WV, Ritchie County WV, WV North		
<b>Map System:</b>	Universal Transverse Mercator (US Survey Fee	<b>System Datum:</b>	Mean Sea Level
<b>Geo Datum:</b>	NAD 1927 (NADCON CONUS)		
<b>Map Zone:</b>	Zone 17N (84 W to 78 W)		

<b>Site</b>	Annie/Belle Pad				
<b>Site Position:</b>		<b>Northing:</b>	14,281,134.20 usft	<b>Latitude:</b>	39° 19' 38.474 N
<b>From:</b>	Map	<b>Easting:</b>	1,661,500.66 usft	<b>Longitude:</b>	80° 55' 31.591 W
<b>Position Uncertainty:</b>	0.0 usft	<b>Slot Radius:</b>	13-3/16"	<b>Grid Convergence:</b>	0.05 °

<b>Well</b>	Belle Unit 1H					
<b>Well Position</b>	<b>+N/-S</b>	0.0 usft	<b>Northing:</b>	14,281,132.87 usft	<b>Latitude:</b>	39° 19' 38.461 N
	<b>+E/-W</b>	0.0 usft	<b>Easting:</b>	1,661,480.69 usft	<b>Longitude:</b>	80° 55' 31.846 W
<b>Position Uncertainty</b>	2.8 usft		<b>Wellhead Elevation:</b>	1,032.0 usft	<b>Ground Level:</b>	1,004.0 usft

<b>Wellbore</b>	Original Wellpath				
-----------------	-------------------	--	--	--	--

Magnetics	Model Name	Sample Date	Declination (°)	Dip Angle (°)	Field Strength (nT)
	BGGM2013	5/5/2014	-8.43	66.90	52,303

<b>Design</b>	As Drilled				
<b>Audit Notes:</b>					
<b>Version:</b>	1.0	<b>Phase:</b>	ACTUAL	<b>Tie On Depth:</b>	0.0
<b>Vertical Section:</b>	<b>Depth From (TVD) (usft)</b>	<b>+N/-S (usft)</b>	<b>+E/-W (usft)</b>	<b>Direction (°)</b>	
	0.0	0.0	0.0	321.79	

<b>Survey Program</b>	Date 5/30/2014				
From (usft)	To (usft)	Survey (Wellbore)	Tool Name	Description	
100.0	2,699.0	Survey #2 Intermediate Gyro (Original We	SDI Standard Keeper	Scientific Drilling Intl. Standard Wireline Keeper	
2,700.0	5,535.6	Survey #4 Def Gyro to KOP (Original Well	SDI Standard Keeper	Scientific Drilling Intl. Standard Wireline Keeper	
5,578.0	15,695.0	Survey #5 SDI MWD (Original Wellpath)	SDI MWD	Scientific Drilling Intl. MWD - Standard ver 1.0.1	

MD (usft)	Inc (°)	Azi (azimuth) (°)	TVD (usft)	N/S (usft)	E/W (usft)	V. Sec (usft)	DLeg (°/100usft)
0.0	0.00	0.00	0.0	0.0	0.0	0.0	0.00
100.0	0.55	130.26	100.0	-0.3	0.4	-0.5	0.55
200.0	0.82	212.67	200.0	-1.2	0.3	-1.2	0.93
300.0	1.08	239.73	300.0	-2.3	-0.9	-1.3	0.51
400.0	0.90	229.05	400.0	-3.3	-2.3	-1.2	0.26
500.0	0.74	234.49	500.0	-4.2	-3.4	-1.2	0.18
600.0	0.34	245.32	600.0	-4.7	-4.2	-1.1	0.41
700.0	0.29	233.11	699.9	-5.0	-4.6	-1.0	0.08
800.0	0.39	262.10	799.9	-5.2	-5.2	-0.8	0.20
900.0	0.18	204.24	899.9	-5.3	-5.6	-0.7	0.33

# RECEIVED

JUN 23 2015



## EOW Completion Report



WV GEOLOGICAL SURVEY  
MORGANTOWN, WV

**Company:** Antero Resources  
**Project:** Ritchie County WV  
**Site:** Annie/Belle Pad  
**Well:** Belle Unit 1H  
**Wellbore:** Original Wellpath  
**Design:** As Drilled

**Local Co-ordinate Reference:** Well Belle Unit 1H  
**TVD Reference:** Frontier 25 Belle Unit 1H GL 1004 + 28' RKB @ 1  
**MD Reference:** Frontier 25 Belle Unit 1H GL 1004 + 28' RKB @ 1  
**North Reference:** Grid  
**Survey Calculation Method:** Minimum Curvature  
**Database:** Oklahoma District

### Survey

MD (usft)	Inc (°)	Azi (azimuth) (°)	TVD (usft)	N/S (usft)	E/W (usft)	V. Sec (usft)	DLeg (°/100usft)
1,000.0	0.26	261.16	999.9	-5.5	-5.9	-0.7	0.22
1,100.0	0.11	237.07	1,099.9	-5.6	-6.2	-0.6	0.17
1,200.0	0.28	230.33	1,199.9	-5.8	-6.5	-0.6	0.17
1,300.0	0.17	98.30	1,299.9	-6.0	-6.5	-0.7	0.41
1,400.0	0.18	192.04	1,399.9	-6.2	-6.4	-0.9	0.26
1,500.0	0.11	143.07	1,499.9	-6.4	-6.4	-1.1	0.14
1,600.0	0.19	236.38	1,599.9	-6.6	-6.4	-1.2	0.22
1,700.0	0.16	108.29	1,699.9	-6.7	-6.4	-1.3	0.31
1,800.0	0.40	214.28	1,799.9	-7.0	-6.5	-1.5	0.47
1,900.0	0.09	179.66	1,899.9	-7.4	-6.7	-1.7	0.33
2,000.0	0.29	207.68	1,999.9	-7.7	-6.8	-1.8	0.21
2,100.0	0.13	99.86	2,099.9	-7.9	-6.8	-2.0	0.35
2,200.0	0.08	114.97	2,199.9	-8.0	-6.6	-2.2	0.06
2,300.0	0.16	208.80	2,299.9	-8.1	-6.7	-2.3	0.18
2,400.0	0.03	15.49	2,399.9	-8.2	-6.7	-2.3	0.19
2,500.0	0.05	1.23	2,499.9	-8.2	-6.7	-2.3	0.02
2,600.0	0.05	98.66	2,599.9	-8.1	-6.7	-2.3	0.08
2,699.0	0.17	213.30	2,698.9	-8.3	-6.7	-2.4	0.20
2,700.0	0.07	336.39	2,699.9	-8.3	-6.7	-2.4	21.42
2,800.0	0.10	232.11	2,799.9	-8.3	-6.8	-2.3	0.14
2,900.0	0.61	227.09	2,899.9	-8.7	-7.2	-2.3	0.51
3,000.0	4.45	216.73	2,999.8	-12.2	-10.0	-3.4	3.85
3,100.0	4.83	215.92	3,099.5	-18.7	-14.8	-5.6	0.39
3,200.0	4.86	229.66	3,199.1	-24.8	-20.4	-6.9	1.16
3,300.0	5.25	241.75	3,298.8	-29.7	-27.7	-6.2	1.13
3,400.0	5.06	250.58	3,398.3	-33.4	-35.9	-4.0	0.81
3,500.0	0.56	224.41	3,498.2	-35.2	-40.4	-2.7	4.56
3,600.0	0.17	154.55	3,598.2	-35.7	-40.7	-2.9	0.53
3,700.0	0.06	48.91	3,698.2	-35.8	-40.6	-3.0	0.19
3,800.0	0.31	61.51	3,798.2	-35.6	-40.3	-3.0	0.25
3,900.0	0.32	36.39	3,898.2	-35.2	-39.9	-3.0	0.14
4,000.0	0.48	49.63	3,998.2	-34.8	-39.4	-2.9	0.18
4,100.0	0.47	48.57	4,098.2	-34.2	-38.8	-2.9	0.01
4,200.0	0.40	54.91	4,198.2	-33.7	-38.2	-2.9	0.08
4,300.0	0.45	50.67	4,298.2	-33.3	-37.6	-2.9	0.06
4,400.0	0.60	56.77	4,398.2	-32.8	-36.9	-2.9	0.16
4,500.0	0.62	59.26	4,498.2	-32.2	-36.0	-3.1	0.03
4,600.0	0.69	54.81	4,598.2	-31.6	-35.0	-3.2	0.09
4,700.0	0.66	61.14	4,698.2	-30.9	-34.0	-3.3	0.08
4,800.0	0.72	43.09	4,798.2	-30.2	-33.1	-3.3	0.22
4,900.0	0.48	58.04	4,898.2	-29.5	-32.3	-3.2	0.28
5,000.0	0.54	48.32	4,998.1	-29.0	-31.6	-3.2	0.11
5,100.0	0.75	49.19	5,098.1	-28.2	-30.7	-3.2	0.21
5,200.0	0.80	41.28	5,198.1	-27.3	-29.8	-3.0	0.12
5,300.0	0.75	34.08	5,298.1	-26.2	-28.9	-2.7	0.11



**Company:** Antero Resources  
**Project:** Ritchie County WV  
**Site:** Annie/Belle Pad  
**Well:** Belle Unit 1H  
**Wellbore:** Original Wellpath  
**Design:** As Drilled

**Local Co-ordinate Reference:** Well Belle Unit 1H  
**TVD Reference:** Frontier 25 Belle Unit 1H GL 1004 + 28' RKB @ 1  
**MD Reference:** Frontier 25 Belle Unit 1H GL 1004 + 28' RKB @ 1  
**North Reference:** Grid  
**Survey Calculation Method:** Minimum Curvature  
**Database:** Oklahoma District

**Survey**

MD (usft)	Inc (°)	Azi (azimuth) (°)	TVD (usft)	N/S (usft)	E/W (usft)	V. Sec (usft)	DLeg (°/100usft)
5,400.0	0.53	38.80	5,398.1	-25.3	-28.3	-2.4	0.23
5,500.0	0.53	25.74	5,498.1	-24.5	-27.8	-2.1	0.12
5,535.6	0.51	13.39	5,533.7	-24.2	-27.7	-1.9	0.32
5,578.0	0.26	9.81	5,576.1	-24.0	-27.6	-1.7	0.59
5,610.0	1.85	206.78	5,608.1	-24.4	-27.9	-1.9	6.56
5,641.0	4.66	211.96	5,639.1	-25.9	-28.7	-2.5	9.10
5,673.0	6.16	225.50	5,670.9	-28.2	-30.7	-3.2	6.12
5,705.0	7.47	237.63	5,702.7	-30.5	-33.6	-3.2	6.06
5,737.0	10.20	243.07	5,734.3	-32.9	-37.9	-2.4	8.91
5,769.0	11.61	242.64	5,765.7	-35.7	-43.3	-1.2	4.41
5,801.0	13.01	236.04	5,797.0	-39.1	-49.2	-0.4	6.20
5,832.0	15.74	231.30	5,827.0	-43.7	-55.3	-0.1	9.58
5,864.0	19.26	229.10	5,857.5	-49.9	-62.7	-0.4	11.19
5,895.0	21.98	228.40	5,886.5	-57.1	-70.9	-1.0	8.81
5,927.0	23.39	232.70	5,916.1	-64.9	-80.4	-1.3	6.80
5,959.0	25.15	239.03	5,945.2	-72.3	-91.3	-0.3	9.81
5,991.0	27.35	245.98	5,974.0	-78.8	-103.9	2.4	11.80
6,023.0	29.37	254.41	6,002.1	-83.9	-118.2	7.2	14.00
6,054.0	31.22	261.44	6,028.9	-87.1	-133.4	14.1	12.89
6,086.0	32.54	267.77	6,056.1	-88.7	-150.2	23.2	11.23
6,095.0	32.95	269.76	6,063.6	-88.8	-155.1	26.2	12.76
<b>Sycamore</b>							
6,118.0	34.12	274.63	6,082.8	-88.3	-167.8	34.4	12.76
6,150.0	36.67	279.99	6,108.9	-85.9	-186.2	47.6	12.55
6,182.0	39.66	283.86	6,134.1	-81.8	-205.5	62.8	11.96
6,213.0	42.47	287.46	6,157.4	-76.3	-225.1	79.3	11.84
6,219.0	43.04	288.12	6,161.8	-75.0	-229.0	82.7	12.05
<b>Middlesex</b>							
6,245.0	45.55	290.80	6,180.5	-69.0	-246.1	98.0	12.05
6,277.0	47.92	295.37	6,202.4	-59.8	-267.5	118.4	12.76
6,309.0	50.56	299.50	6,223.3	-48.7	-289.0	140.5	12.79
6,341.0	53.29	301.96	6,243.0	-35.8	-310.6	164.0	10.46
6,373.0	56.19	304.16	6,261.5	-21.5	-332.5	188.8	10.66
6,390.0	58.69	304.95	6,270.6	-13.4	-344.3	202.4	15.24
<b>Burkett</b>							
6,404.0	60.76	305.57	6,277.7	-6.4	-354.2	214.0	15.24
6,436.0	64.54	306.18	6,292.4	10.2	-377.2	241.4	11.93
6,449.0	66.16	306.37	6,297.8	17.2	-386.7	252.7	12.55
<b>Tully</b>							
6,467.0	68.41	306.62	6,304.8	27.1	-400.1	268.8	12.55
6,499.0	72.37	309.08	6,315.5	45.6	-423.9	298.0	14.34
6,525.0	75.17	310.27	6,322.8	61.5	-443.1	322.4	11.63
<b>Marcellus</b>							
6,530.0	75.71	310.49	6,324.0	64.7	-446.8	327.2	11.63
6,562.0	79.32	311.45	6,331.0	85.1	-470.4	357.8	11.66

JUN 23 2015



WV GEOLOGICAL SURVEY EOW Completion Report  
Resources MORGANTOWN, WV



**Company:** Antero Resources  
**Project:** Ritchie County WV  
**Site:** Annie/Belle Pad  
**Well:** Belle Unit 1H  
**Wellbore:** Original Wellpath  
**Design:** As Drilled

**Local Co-ordinate Reference:** Well Belle Unit 1H  
**TVD Reference:** Frontier 25 Belle Unit 1H GL 1004 + 28' RKB @ 1  
**MD Reference:** Frontier 25 Belle Unit 1H GL 1004 + 28' RKB @ 1  
**North Reference:** Grid  
**Survey Calculation Method:** Minimum Curvature  
**Database:** Oklahoma District

Survey

MD (usft)	Inc (°)	Azi (azimuth) (°)	TVD (usft)	N/S (usft)	E/W (usft)	V. Sec (usft)	DLeg (°/100usft)
6,594.0	82.83	313.30	6,335.9	106.5	-493.7	389.0	12.37
6,612.0	85.12	314.62	6,337.8	118.9	-506.6	406.8	14.66
6,644.0	87.85	315.85	6,339.8	141.6	-529.1	438.5	9.35
6,675.0	87.58	318.31	6,341.0	164.2	-550.2	469.4	7.98
6,707.0	88.29	320.68	6,342.2	188.5	-570.9	501.3	7.73
6,739.0	88.55	322.62	6,343.0	213.6	-590.8	533.3	6.11
6,833.0	88.46	321.74	6,345.5	287.9	-648.4	627.3	0.94
6,928.0	91.80	326.40	6,345.3	364.8	-704.1	722.1	6.03
7,022.0	91.01	327.45	6,343.0	443.5	-755.4	815.7	1.40
7,119.0	90.75	325.78	6,341.5	524.5	-808.8	912.4	1.74
7,213.0	89.25	324.55	6,341.5	601.6	-862.5	1,006.2	2.06
7,310.0	89.34	324.99	6,342.7	680.9	-918.4	1,103.1	0.46
7,405.0	88.90	322.00	6,344.1	757.2	-974.9	1,198.0	3.18
7,501.0	88.90	321.03	6,346.0	832.3	-1,034.7	1,294.0	1.01
7,596.0	89.34	323.06	6,347.4	907.2	-1,093.1	1,389.0	2.19
7,692.0	89.52	321.56	6,348.4	983.2	-1,151.8	1,485.0	1.57
7,786.0	89.96	320.86	6,348.8	1,056.5	-1,210.6	1,578.9	0.88
7,881.0	90.04	322.70	6,348.8	1,131.1	-1,269.4	1,673.9	1.94
7,976.0	88.64	322.70	6,349.9	1,206.6	-1,327.0	1,768.9	1.47
8,072.0	88.02	322.62	6,352.7	1,282.9	-1,385.2	1,864.9	0.65
8,167.0	89.34	321.82	6,354.9	1,358.0	-1,443.4	1,959.8	1.62
8,263.0	90.13	322.35	6,355.3	1,433.7	-1,502.4	2,055.8	0.99
8,357.0	91.71	324.90	6,353.8	1,509.4	-1,558.1	2,149.8	3.19
8,453.0	90.84	322.26	6,351.7	1,586.6	-1,615.1	2,245.7	2.89
8,548.0	88.90	321.39	6,351.9	1,661.3	-1,673.8	2,340.7	2.24
8,643.0	88.18	320.56	6,354.3	1,735.1	-1,733.6	2,435.6	1.16
8,737.0	91.80	322.97	6,354.4	1,808.9	-1,791.7	2,529.6	4.63
8,831.0	90.04	322.00	6,352.8	1,883.4	-1,849.0	2,623.6	2.14
8,925.0	89.78	321.74	6,353.0	1,957.4	-1,907.0	2,717.6	0.39
9,019.0	90.40	320.59	6,352.8	2,030.6	-1,966.0	2,811.6	1.39
9,113.0	91.19	320.86	6,351.5	2,103.4	-2,025.5	2,905.6	0.89
9,208.0	90.57	319.72	6,350.1	2,176.4	-2,086.1	3,000.5	1.37
9,302.0	90.57	317.69	6,349.1	2,247.1	-2,148.2	3,094.4	2.16
9,397.0	90.22	317.17	6,348.5	2,317.0	-2,212.4	3,189.1	0.66
9,492.0	89.60	319.98	6,348.6	2,388.2	-2,275.3	3,283.9	3.03
9,586.0	90.84	322.97	6,348.3	2,461.8	-2,333.8	3,377.9	3.44
9,681.0	90.84	324.73	6,346.9	2,538.5	-2,389.9	3,472.8	1.85
9,776.0	89.78	323.32	6,346.4	2,615.3	-2,445.7	3,567.8	1.86
9,870.0	91.10	323.67	6,345.6	2,690.9	-2,501.6	3,661.7	1.45
9,965.0	92.51	324.81	6,342.7	2,767.9	-2,557.1	3,756.6	1.91
10,055.0	91.63	324.81	6,339.4	2,841.5	-2,608.9	3,846.4	0.98
10,146.0	91.80	324.73	6,336.7	2,915.8	-2,661.4	3,937.2	0.21
10,237.0	90.57	322.79	6,334.8	2,989.1	-2,715.2	4,028.1	2.52
10,327.0	90.13	321.39	6,334.2	3,060.1	-2,770.4	4,118.1	1.63
10,417.0	91.10	320.95	6,333.3	3,130.2	-2,826.9	4,208.1	1.18

JUN 23 2015



WV GEOLOGICAL SURVEY  
MORGANTOWN, WV

EOW Completion Report



**Company:** Antero Resources  
**Project:** Ritchie County WV  
**Site:** Annie/Belle Pad  
**Well:** Belle Unit 1H  
**Wellbore:** Original Wellpath  
**Design:** As Drilled

**Local Co-ordinate Reference:** Well Belle Unit 1H  
**TVD Reference:** Frontier 25 Belle Unit 1H GL 1004 + 28' RKB @ 1  
**MD Reference:** Frontier 25 Belle Unit 1H GL 1004 + 28' RKB @ 1  
**North Reference:** Grid  
**Survey Calculation Method:** Minimum Curvature  
**Database:** Oklahoma District

Survey

MD (usft)	Inc (°)	Azi (azimuth) (°)	TVD (usft)	N/S (usft)	E/W (usft)	V. Sec (usft)	DLeg (°/100usft)
10,509.0	89.52	321.12	6,332.8	3,201.8	-2,884.7	4,300.1	1.73
10,599.0	89.69	320.77	6,333.4	3,271.7	-2,941.4	4,390.1	0.43
10,689.0	90.40	320.51	6,333.3	3,341.2	-2,998.5	4,480.1	0.84
10,781.0	89.69	321.39	6,333.3	3,412.7	-3,056.5	4,572.1	1.23
10,870.0	88.29	320.68	6,334.8	3,481.9	-3,112.4	4,661.1	1.76
10,961.0	88.99	320.33	6,337.0	3,552.1	-3,170.3	4,752.0	0.86
11,051.0	89.12	320.24	6,338.5	3,621.3	-3,227.8	4,842.0	0.18
11,146.0	90.50	320.80	6,338.8	3,694.6	-3,288.2	4,936.9	1.57
11,241.0	89.87	322.00	6,338.5	3,768.9	-3,347.5	5,031.9	1.43
11,337.0	89.69	321.21	6,338.9	3,844.1	-3,407.1	5,127.9	0.84
11,431.0	90.66	322.53	6,338.6	3,918.0	-3,465.1	5,221.9	1.74
11,525.0	89.43	323.06	6,338.5	3,992.9	-3,521.9	5,315.9	1.42
11,619.0	90.66	322.79	6,338.4	4,067.9	-3,578.6	5,409.9	1.34
11,714.0	89.08	321.91	6,338.6	4,143.1	-3,636.6	5,504.9	1.90
11,808.0	89.87	322.35	6,339.5	4,217.3	-3,694.3	5,598.9	0.96
11,902.0	90.40	321.91	6,339.3	4,291.5	-3,752.0	5,692.9	0.73
11,996.0	90.84	321.82	6,338.3	4,365.5	-3,810.1	5,786.9	0.48
12,091.0	89.34	321.65	6,338.1	4,440.0	-3,868.9	5,881.9	1.59
12,185.0	89.34	321.56	6,339.2	4,513.7	-3,927.3	5,975.9	0.10
12,280.0	90.75	322.00	6,339.1	4,588.3	-3,986.1	6,070.9	1.55
12,374.0	89.69	322.18	6,338.8	4,662.5	-4,043.8	6,164.8	1.14
12,468.0	90.57	321.65	6,338.5	4,736.5	-4,101.8	6,258.8	1.09
12,562.0	90.31	321.74	6,337.8	4,810.3	-4,160.1	6,352.8	0.29
12,656.0	90.40	322.09	6,337.2	4,884.2	-4,218.1	6,446.8	0.38
12,750.0	89.16	321.82	6,337.6	4,958.3	-4,276.0	6,540.8	1.35
12,845.0	88.72	321.21	6,339.4	5,032.6	-4,335.1	6,635.8	0.79
12,940.0	89.96	321.91	6,340.4	5,107.0	-4,394.1	6,730.8	1.50
13,035.0	91.71	324.55	6,339.1	5,183.1	-4,451.0	6,825.8	3.33
13,129.0	89.08	323.32	6,338.4	5,259.1	-4,506.3	6,919.7	3.09
13,223.0	91.45	324.29	6,338.0	5,334.9	-4,561.8	7,013.6	2.72
13,317.0	90.13	321.82	6,336.7	5,410.0	-4,618.3	7,107.6	2.98
13,411.0	89.78	320.33	6,336.8	5,483.2	-4,677.4	7,201.6	1.63
13,505.0	90.13	320.15	6,336.8	5,555.4	-4,737.5	7,295.5	0.42
13,599.0	90.40	319.45	6,336.4	5,627.2	-4,798.2	7,389.5	0.80
13,694.0	90.22	320.15	6,335.9	5,699.8	-4,859.5	7,484.4	0.76
13,789.0	90.92	322.18	6,334.9	5,773.8	-4,919.1	7,579.4	2.26
13,883.0	89.60	322.18	6,334.5	5,848.0	-4,976.7	7,673.4	1.40
13,977.0	89.96	321.74	6,334.9	5,922.1	-5,034.6	7,767.4	0.60
14,070.0	90.13	321.82	6,334.8	5,995.1	-5,092.2	7,860.4	0.20
14,165.0	90.57	321.82	6,334.2	6,069.8	-5,150.9	7,955.4	0.46
14,259.0	90.75	321.56	6,333.1	6,143.5	-5,209.1	8,049.4	0.34
14,354.0	90.66	322.00	6,332.0	6,218.2	-5,267.9	8,144.4	0.47
14,448.0	90.48	321.30	6,331.0	6,291.9	-5,326.2	8,238.4	0.77
14,542.0	90.40	320.24	6,330.3	6,364.7	-5,385.7	8,332.3	1.13

JUN 23 2015



EOW Completion Report



**Company:** Antero Resources  
**Project:** Ritchie County WV  
**Site:** Annie/Belle Pad  
**Well:** Belle Unit 1H  
**Wellbore:** Original Wellpath  
**Design:** As Drilled

**Local Co-ordinate Reference:** Well Belle Unit 1H  
**TVD Reference:** Frontier 25 Belle Unit 1H GL 1004 + 28' RKB @ 1  
**MD Reference:** Frontier 25 Belle Unit 1H GL 1004 + 28' RKB @ 1  
**North Reference:** Grid  
**Survey Calculation Method:** Minimum Curvature  
**Database:** Oklahoma District

**Survey**

MD (usft)	Inc (°)	Azi (azimuth) (°)	TVD (usft)	N/S (usft)	E/W (usft)	V. Sec (usft)	DLeg (°/100usft)
14,638.0	89.96	318.75	6,330.0	6,437.7	-5,448.0	8,428.3	1.62
14,732.0	90.13	319.54	6,329.9	6,508.8	-5,509.5	8,522.2	0.86
14,826.0	90.22	320.86	6,329.6	6,581.0	-5,569.7	8,616.1	1.41
14,921.0	89.78	322.00	6,329.6	6,655.3	-5,628.9	8,711.1	1.29
15,016.0	90.48	321.91	6,329.4	6,730.1	-5,687.5	8,806.1	0.74
15,111.0	90.48	321.82	6,328.6	6,804.8	-5,746.1	8,901.1	0.09
15,205.0	90.40	323.67	6,327.9	6,879.6	-5,803.0	8,995.1	1.97
15,300.0	90.48	323.76	6,327.2	6,956.2	-5,859.2	9,090.0	0.13
15,394.0	89.43	324.02	6,327.3	7,032.1	-5,914.6	9,184.0	1.15
15,488.0	89.43	323.14	6,328.2	7,107.8	-5,970.4	9,277.9	0.94
15,582.0	89.34	322.70	6,329.2	7,182.8	-6,027.1	9,371.9	0.48
15,639.0	89.16	322.62	6,329.9	7,228.1	-6,061.7	9,428.9	0.35
15,695.0	89.38	322.12	6,330.7	7,272.4	-6,095.9	9,484.9	0.98

**Design Annotations**

Measured Depth (usft)	Vertical Depth (usft)	Local Coordinates		Comment
		+N/-S (usft)	+E/-W (usft)	
6,095.0	6,063.6	-88.8	-155.1	Sycamore
6,219.0	6,161.8	-75.0	-229.0	Middlesex
6,390.0	6,270.6	-13.4	-344.3	Burkett
6,449.0	6,297.8	17.2	-386.7	Tully
6,525.0	6,322.8	61.5	-443.1	Marcellus

Checked By: \_\_\_\_\_ Approved By: \_\_\_\_\_ Date: \_\_\_\_\_