

4708510036

RECEIVED

DEC 16 2013

WV GEOLOGICAL SURVEY
MORGANTOWN, WV



Antero Resources
Blanche Unit 1H
Ritchie County WV
Northing: 14283559.28
Easting: 1663033.84
As Drilled

WELL DETAILS: Blanche Unit 1H

+N/S	+E/W	Northing	Ground Level	988.0	Latitude	38° 20' 24.40" N	Longitude	95° 12' 04.6" W	Spot
0.0	0.0	14283559.28		1663033.84		38° 20' 24.40" N	95° 12' 04.6" W		

PROJECT DETAILS: Ritchie County WV

Geocode System: UTM Zone 17N
Datum: NAD 83
Elevation: Sea Level
Zone: Zone 17N (84 W to 78 W)
System Datum: Mean Sea Level

REFERENCE INFORMATION

Co-ordinate (NAD 83) Reference: UTM Zone 17N, Datum: NAD 83
Datum: NAD 83
System: UTM
Zone: Zone 17N (84 W to 78 W)
Datum: Mean Sea Level
System Datum: Mean Sea Level



Genie Lightfoot
10:57, September 09 2013
Scientific Drilling
421 South Eagle Lane
Oklahoma City, OK

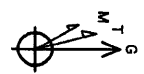
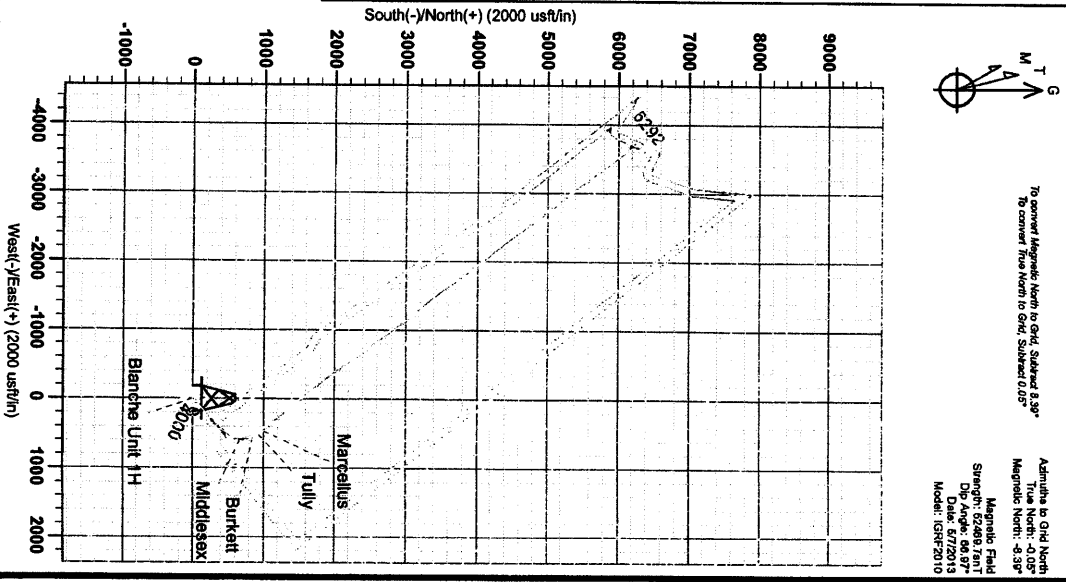
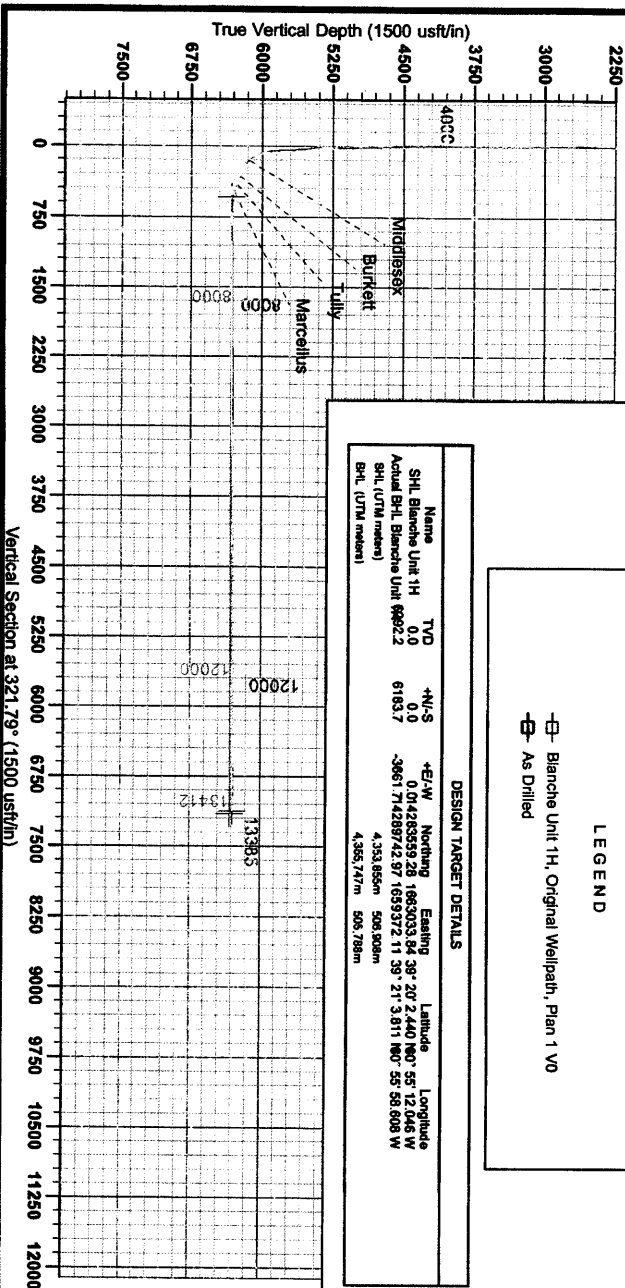
LEGEND

□ Blanche Unit 1H, Original Wellpath, Plan 1 V0

⊖ As Drilled

DESIGN TARGET DETAILS

Name	TVD	+N/S	+E/W	Northing	Easting	Latitude	Longitude
SHL Blanche Unit 1H	0.0	0.0	0.0	14283559.28	1663033.84	38° 20' 24.40" N	95° 12' 04.6" W
Actual BH: Blanche Unit 8992.2		6183.7	-3661.7	7428972.87	1659372.1	38° 21' 3.911" N	95° 58.608" W
SHL (UTM meters)				4,353,659m	509,926m		
BHL (UTM meters)				4,365,747m	505,789m		



To convert Magnetic North to Grid, Subtract 8.97°
To convert True North to Grid, Subtract 11.05°

Admitted to Grid North
True North: -0.05°
Magnetic North: -8.55°

Magnetic Field
Strength: 62489.7 nT
Dip Angle: 66.97°
Date: 6/7/2013
Model: IGRF2010