

RECEIVED

JUN 26 2015

WV GEOLOGICAL SURVEY
MORGANTOWN, WV



Hornet Unit 2H
Ritchie County WV
Northing: 14245895.64
Easting: 1667892.57
As Drilled



Scientific Drilling

WELL DETAILS		Hornet Unit 2H	
+N/S	0.0	Northing	1191.0
+E/W	0.0	Easting	1667892.57
		Latitude	39° 13' 49.986 N
		Longitude	80° 54' 10.701 W

SITE DETAILS: Hornet/Myrtle Pad	
Site Center: Hornet Unit 1H	
Site Centre Northing: 14245895.63	
Easting: 1667891.74	
Positional Uncertainty: 0.0	
Convergence: 0.06	
Local North: Grid	

LEGEND	
○	Hornet Unit 1H, Original Wellpath, As Drilled V0
○	Myrtle Unit 2H, Original Wellpath, As Drilled V0
○	Hornet Unit 2H, Original Wellpath, Plan 4 V0
○	As Drilled

PROJECT DETAILS: Ritchie County WV	
Geodetic System:	Universal Transverse Mercator (US Survey Feet)
Datum:	NAD 1983 (NADCON CONUS)
Ellipsoid:	Clarke 1866
Zone:	Zone 17N (84 W to 78 W)
System Datum:	Mean Sea Level

DESIGN TARGET DETAILS							
Name	TVD	+N/S	+E/W	Northing	Easting	Latitude	Longitude
SHL Hornet Unit 2H	0.0	0.0	0.0	14245895.64	1667892.5739	13° 49' 986" N	80° 54' 10.701 W
Actual BHL Hornet Unit 2H	8497.4	10970.9	-3914.9	14256866.51	1663978.069	15° 38.502 N	80° 55' 0.338 W

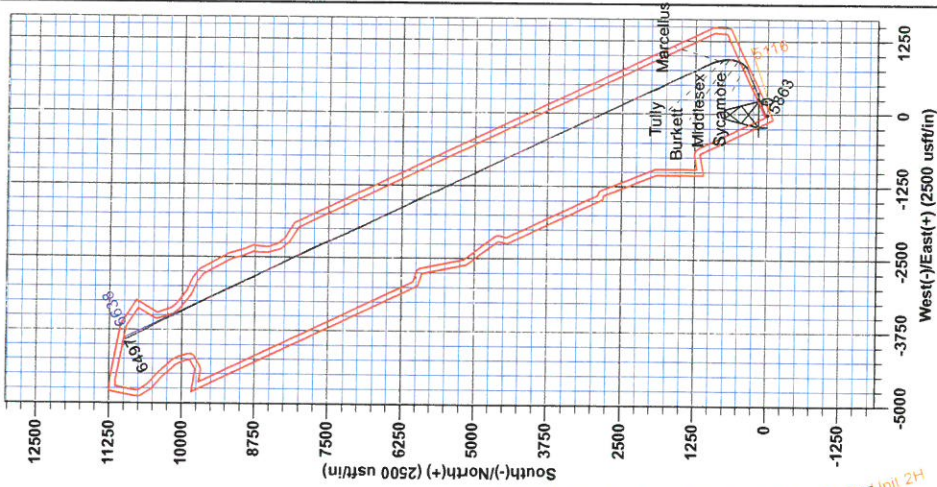
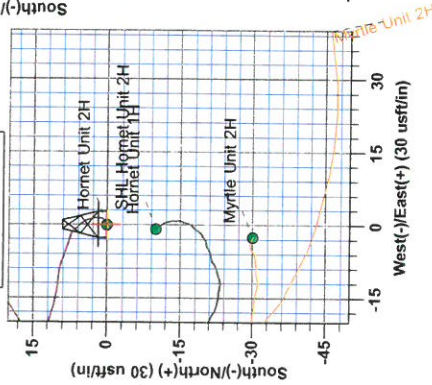
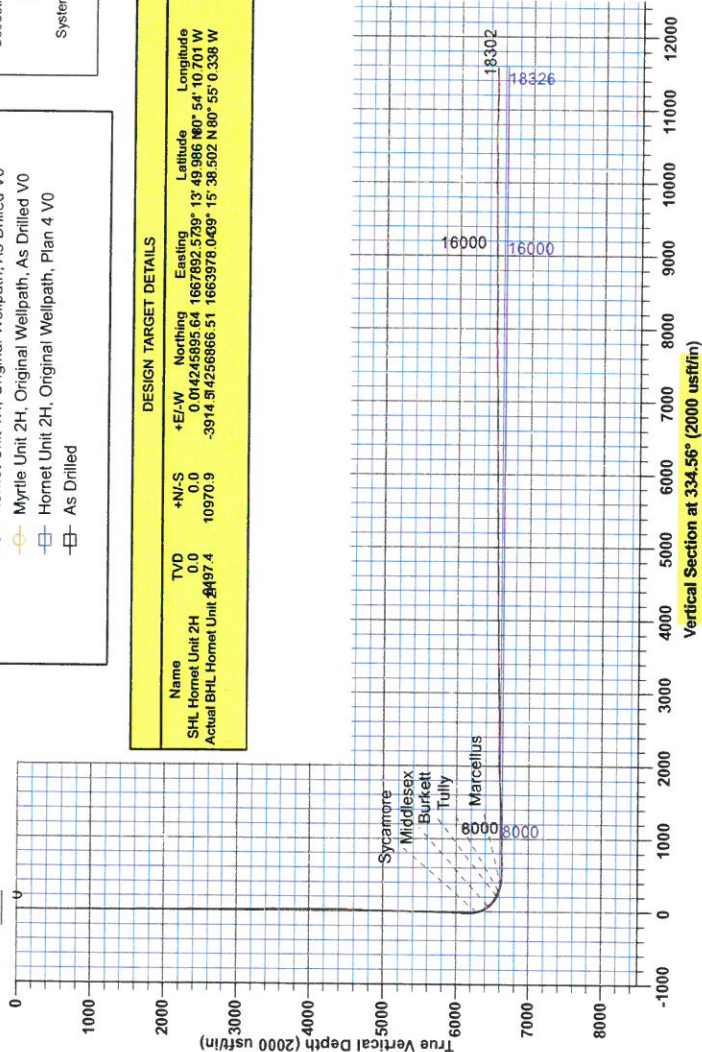
Genie Lightfoot
14.06, May 09 2014
Scientific Drilling
421 South Englewood
Oklahoma City, OK 73128

To convert Magnetic North to Grid, Subtract 8.43°
To convert True North to Grid, Subtract 0.09°



Azimuths to Grid North
True North: -0.06°
Magnetic North: -8.43°
Magnetic Field
Strength: 52309.98nT
Dip Angle: 66.81°
Date: 3/11/2014
Model: IGRF2010

Precision 525: Hornet Unit 2H-GL 1191+19 @ 1210.0ubit





RECEIVED
JUN 26 2015
WV GEOLOGICAL SURVEY
MORGANTOWN, WV

Antero Resources

Ritchie County WV
Hornet/Myrtle Pad
Hornet Unit 2H
Original Wellpath

Design: As Drilled

EOW Completion Report

09 May, 2014



JUN 26 2015



EOW Completion Report



Company: Antero Resources	Local Co-ordinate Reference: Well Hornet Unit 2H
Project: Ritchie County WV	TVD Reference: Precision 525: Hornet Unit 2H: GL 1191+19' @ 12
Site: Hornet/Myrtle Pad	MD Reference: Precision 525: Hornet Unit 2H: GL 1191+19' @ 12
Well: Hornet Unit 2H	North Reference: Grid
Wellbore: Original Wellpath	Survey Calculation Method: Minimum Curvature
Design: As Drilled	Database: Oklahoma District

Project	Ritchie County WV, Ritchie County WV, WV North		
Map System:	Universal Transverse Mercator (US Survey Fee	System Datum:	Mean Sea Level
Geo Datum:	NAD 1927 (NADCON CONUS)		
Map Zone:	Zone 17N (84 W to 78 W)		

Site Hornet/Myrtle Pad

Site Position:

From: Map	Northing: 14,245,885.63 usft	Latitude: 39° 13' 49.887 N
Position Uncertainty: 0.0 usft	Easting: 1,667,891.74 usft	Longitude: 80° 54' 10.711 W
	Slot Radius: 13-3/16"	Grid Convergence: 0.06 °

Well Hornet Unit 2H, Marcellus

Well Position

+N/-S 0.0 usft	Northing: 14,245,895.64 usft	Latitude: 39° 13' 49.986 N
+E/-W 0.0 usft	Easting: 1,667,892.57 usft	Longitude: 80° 54' 10.701 W
Position Uncertainty 2.8 usft	Wellhead Elevation: 1,210.0 usft	Ground Level: 1,191.0 usft

Wellbore Original Wellpath

Magnetics	Model Name	Sample Date	Declination (°)	Dip Angle (°)	Field Strength (nT)
	IGRF2010	3/11/2014	-8.37	66.81	52,310

Design As Drilled

Audit Notes:

Version: 1.0 **Phase:** ACTUAL **Tie On Depth:** 0.0

Vertical Section:

Depth From (TVD) (usft)	+N/-S (usft)	+E/-W (usft)	Direction (°)
0.0	0.0	0.0	334.56

Survey Program **Date** 5/9/2014

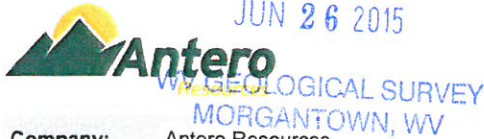
From (usft)	To (usft)	Survey (Wellbore)	Tool Name	Description
106.0	5,846.0	Survey #7 Final Gyro (Original Wellpath)	SDI Standard Keeper	Scientific Drilling Intl. Standard Wireline Keeper
5,932.0	18,302.0	Survey #8 MWD (Original Wellpath)	SDI MWD	Scientific Drilling Intl. MWD - Standard ver 1.0.1

Survey

MD (usft)	Inc (°)	Azi (azimuth) (°)	TVD (usft)	N/S (usft)	E/W (usft)	V. Sec (usft)	DLeg (°/100usft)
0.0	0.00	0.00	0.0	0.0	0.0	0.0	0.00
106.0	0.40	60.10	106.0	0.2	0.3	0.0	0.38
206.0	0.35	62.15	206.0	0.5	0.9	0.1	0.05
306.0	0.32	25.90	306.0	0.9	1.3	0.3	0.21
406.0	0.32	0.31	406.0	1.4	1.4	0.7	0.14
506.0	0.31	1.30	506.0	2.0	1.4	1.2	0.01
606.0	0.25	351.46	606.0	2.5	1.4	1.6	0.08
706.0	0.38	342.93	706.0	3.0	1.3	2.2	0.14
806.0	0.38	339.16	806.0	3.6	1.0	2.8	0.02
906.0	0.41	333.62	906.0	4.3	0.8	3.5	0.05
1,006.0	0.40	326.86	1,006.0	4.9	0.4	4.2	0.05

RECEIVED

JUN 26 2015



EOW Completion Report



Company: Antero Resources
Project: Ritchie County WV
Site: Hornet/Myrtle Pad
Well: Hornet Unit 2H
Wellbore: Original Wellpath
Design: As Drilled

Local Co-ordinate Reference: Well Hornet Unit 2H
TVD Reference: Precision 525: Hornet Unit 2H: GL 1191+19' @ 12
MD Reference: Precision 525: Hornet Unit 2H: GL 1191+19' @ 12
North Reference: Grid
Survey Calculation Method: Minimum Curvature
Database: Oklahoma District

Survey

MD (usft)	Inc (°)	Azi (azimuth) (°)	TVD (usft)	N/S (usft)	E/W (usft)	V. Sec (usft)	DLeg (°/100usft)
1,106.0	0.41	326.31	1,106.0	5.5	0.0	4.9	0.01
1,206.0	0.40	312.53	1,206.0	6.0	-0.4	5.6	0.10
1,306.0	0.43	316.51	1,306.0	6.5	-0.9	6.3	0.04
1,406.0	0.43	308.11	1,406.0	7.0	-1.5	7.0	0.06
1,506.0	0.56	283.19	1,506.0	7.3	-2.3	7.6	0.25
1,606.0	0.55	289.96	1,606.0	7.6	-3.2	8.3	0.07
1,706.0	0.67	287.47	1,706.0	8.0	-4.2	9.0	0.12
1,806.0	0.71	287.42	1,806.0	8.3	-5.4	9.8	0.04
1,906.0	0.69	289.62	1,905.9	8.7	-6.5	10.7	0.03
2,006.0	0.45	296.05	2,005.9	9.1	-7.4	11.4	0.25
2,106.0	0.31	278.59	2,105.9	9.3	-8.0	11.9	0.18
2,206.0	0.18	286.39	2,205.9	9.4	-8.5	12.1	0.13
2,306.0	0.32	279.92	2,305.9	9.5	-8.9	12.4	0.14
2,406.0	0.34	286.46	2,405.9	9.6	-9.5	12.7	0.04
2,506.0	0.40	270.99	2,505.9	9.7	-10.1	13.1	0.12
2,606.0	0.47	276.06	2,605.9	9.7	-10.8	13.5	0.08
2,706.0	0.52	275.31	2,705.9	9.8	-11.7	13.9	0.05
2,806.0	0.59	276.86	2,805.9	9.9	-12.7	14.4	0.07
2,906.0	0.70	283.70	2,905.9	10.1	-13.8	15.1	0.13
3,006.0	0.74	274.63	3,005.9	10.3	-15.0	15.8	0.12
3,106.0	0.75	288.53	3,105.9	10.6	-16.3	16.6	0.18
3,206.0	0.98	284.39	3,205.9	11.0	-17.7	17.6	0.24
3,306.0	0.93	287.82	3,305.9	11.5	-19.3	18.7	0.08
3,406.0	0.89	287.42	3,405.9	12.0	-20.8	19.7	0.04
3,506.0	1.03	287.20	3,505.8	12.5	-22.4	20.9	0.14
3,606.0	0.73	287.24	3,605.8	12.9	-23.9	21.9	0.30
3,706.0	0.65	305.32	3,705.8	13.4	-25.0	22.9	0.23
3,806.0	1.89	56.82	3,805.8	14.7	-24.1	23.6	2.21
3,906.0	3.73	55.65	3,905.7	17.4	-20.0	24.3	1.84
4,006.0	5.51	56.77	4,005.4	21.9	-13.3	25.5	1.78
4,106.0	7.29	66.53	4,104.7	27.0	-3.5	25.9	2.08
4,206.0	9.82	70.67	4,203.6	32.4	10.4	24.8	2.60
4,306.0	12.30	67.97	4,301.7	39.2	28.3	23.2	2.53
4,406.0	15.04	64.34	4,398.9	48.8	49.9	22.6	2.87
4,506.0	17.53	64.55	4,494.9	60.9	75.2	22.7	2.49
4,606.0	19.45	68.76	4,589.7	73.4	104.3	21.5	2.34
4,706.0	21.13	71.74	4,683.5	85.1	137.0	18.0	1.97
4,806.0	22.73	71.22	4,776.3	97.0	172.4	13.5	1.61
4,906.0	24.61	66.39	4,867.9	111.5	209.8	10.6	2.70
5,006.0	26.85	64.29	4,958.0	129.7	249.2	10.0	2.42
5,106.0	28.14	66.23	5,046.7	149.0	291.1	9.5	1.57
5,206.0	27.73	67.66	5,135.0	167.3	334.2	7.5	0.79
5,306.0	25.46	65.97	5,224.4	184.9	375.4	5.7	2.39
5,406.0	24.39	66.00	5,315.1	202.1	413.9	4.7	1.07

JUN 26 2015



EOW Completion Report



Company: Antero Resources
Project: Ritchie County WV
Site: Hornet/Myrtle Pad
Well: Hornet Unit 2H
Wellbore: Original Wellpath
Design: As Drilled

Local Co-ordinate Reference: Well Hornet Unit 2H
TVD Reference: Precision 525: Hornet Unit 2H: GL 1191+19' @ 12
MD Reference: Precision 525: Hornet Unit 2H: GL 1191+19' @ 12
North Reference: Grid
Survey Calculation Method: Minimum Curvature
Database: Oklahoma District

Survey

MD (usft)	Inc (°)	Azi (azimuth) (°)	TVD (usft)	N/S (usft)	E/W (usft)	V. Sec (usft)	DLeg (°/100usft)
5,506.0	26.10	68.55	5,405.6	218.5	453.2	2.6	2.03
5,606.0	27.13	69.18	5,495.0	234.6	495.0	-0.7	1.07
5,706.0	26.31	67.26	5,584.3	251.3	536.8	-3.6	1.19
5,806.0	24.85	67.17	5,674.5	268.0	576.6	-5.6	1.46
5,846.0	23.98	68.56	5,710.9	274.3	591.9	-6.6	2.61
274.3' N 591.9' E							
5,932.0	22.76	66.33	5,789.8	287.3	623.4	-8.3	1.75
6,022.0	23.44	67.34	5,872.6	301.2	655.8	-9.7	0.87
6,112.0	23.97	68.71	5,955.0	314.8	689.4	-11.9	0.85
6,202.0	23.82	68.56	6,037.3	328.0	723.3	-14.5	0.18
6,292.0	25.22	66.79	6,119.2	342.2	757.9	-16.5	1.76
6,336.0	25.48	65.59	6,159.0	349.8	775.1	-17.0	1.31
6,381.0	26.59	60.50	6,199.4	358.8	792.7	-16.5	5.54
6,426.0	29.30	51.94	6,239.2	370.6	810.1	-13.4	10.74
6,471.0	33.35	44.44	6,277.6	386.2	827.5	-6.7	12.48
6,487.0	34.52	42.26	6,290.9	392.7	833.6	-3.5	10.54
Sycamore							
6,516.0	36.73	38.64	6,314.5	405.5	844.6	3.4	10.54
6,561.0	40.14	33.30	6,349.7	428.2	860.9	16.8	10.57
6,606.0	44.08	28.85	6,383.1	454.0	876.5	33.5	10.98
6,651.0	47.35	26.32	6,414.5	482.6	891.4	52.9	8.31
6,696.0	49.18	22.22	6,444.5	513.2	905.1	74.6	7.92
6,704.0	49.68	21.17	6,449.7	518.8	907.4	78.8	11.79
Middlesex							
6,741.0	52.11	16.50	6,473.0	546.0	916.6	99.3	11.79
6,785.0	55.97	9.54	6,498.9	580.7	924.6	127.2	15.51
6,830.0	59.95	4.51	6,522.8	618.5	929.2	159.4	12.96
6,875.0	62.51	0.73	6,544.4	657.9	931.0	194.2	9.30
6,906.0	64.37	358.74	6,558.3	685.6	930.9	219.3	8.31
Burkett							
6,920.0	65.22	357.86	6,564.2	698.3	930.5	230.9	8.31
6,965.0	67.85	355.42	6,582.2	739.5	928.1	269.1	7.67
6,986.0	69.39	354.41	6,589.8	759.0	926.3	287.5	8.58
Tully							
7,010.0	71.15	353.28	6,597.9	781.4	923.9	308.8	8.58
7,055.0	75.11	348.81	6,611.0	823.9	917.2	350.1	12.95
7,061.0	75.66	348.20	6,612.5	829.6	916.0	355.7	13.42
Marcellus							
7,099.0	79.18	344.42	6,620.8	865.7	907.3	392.0	13.42
7,144.0	82.56	341.63	6,627.9	908.1	894.3	435.9	9.69
7,189.0	85.96	338.89	6,632.4	950.3	879.2	480.5	9.68
7,250.0	88.81	335.66	6,635.2	1,006.5	855.6	541.3	7.06
7,340.0	91.10	335.49	6,635.3	1,088.4	818.4	631.3	2.55
7,430.0	90.48	334.78	6,634.0	1,170.0	780.6	721.3	1.05
7,520.0	89.25	334.52	6,634.2	1,251.4	742.0	811.3	1.40

JUN 26 2015



GEOLOGICAL SURVEY
MORGANTOWN, WV

EOW Completion Report



Company: Antero Resources
Project: Ritchie County WV
Site: Hornet/Myrtle Pad
Well: Hornet Unit 2H
Wellbore: Original Wellpath
Design: As Drilled

Local Co-ordinate Reference: Well Hornet Unit 2H
TVD Reference: Precision 525: Hornet Unit 2H: GL 1191+19' @ 12
MD Reference: Precision 525: Hornet Unit 2H: GL 1191+19' @ 12
North Reference: Grid
Survey Calculation Method: Minimum Curvature
Database: Oklahoma District

Survey

MD (usft)	Inc (°)	Azi (azimuth) (°)	TVD (usft)	N/S (usft)	E/W (usft)	V. Sec (usft)	DLeg (°/100usft)
7,609.0	91.28	335.13	6,633.8	1,331.9	704.2	900.3	2.38
7,699.0	93.03	334.08	6,630.5	1,413.2	665.6	990.2	2.27
7,789.0	93.21	334.08	6,625.6	1,494.0	626.3	1,080.1	0.20
7,879.0	92.24	334.61	6,621.3	1,575.0	587.4	1,170.0	1.23
7,969.0	90.84	332.85	6,618.9	1,655.7	547.6	1,259.9	2.50
8,058.0	92.33	334.26	6,616.4	1,735.3	508.0	1,348.9	2.30
8,148.0	90.22	331.62	6,614.4	1,815.5	467.0	1,438.8	3.75
8,238.0	91.01	333.55	6,613.4	1,895.3	425.6	1,528.7	2.32
8,328.0	91.80	338.12	6,611.2	1,977.4	388.8	1,618.7	5.15
8,417.0	92.59	336.89	6,607.8	2,059.6	354.8	1,707.5	1.64
8,507.0	94.44	336.54	6,602.3	2,142.1	319.3	1,797.2	2.09
8,597.0	94.18	336.01	6,595.5	2,224.2	283.1	1,886.9	0.65
8,686.0	92.59	335.40	6,590.3	2,305.2	246.6	1,975.8	1.91
8,776.0	90.57	335.13	6,587.8	2,386.9	209.0	2,065.7	2.26
8,866.0	90.04	334.17	6,587.3	2,468.3	170.4	2,155.7	1.22
8,955.0	90.13	333.73	6,587.2	2,548.2	131.3	2,244.7	0.50
9,045.0	90.13	333.29	6,587.0	2,628.8	91.2	2,334.7	0.49
9,135.0	89.96	334.52	6,586.9	2,709.6	51.6	2,424.7	1.38
9,224.0	89.78	334.43	6,587.1	2,789.9	13.3	2,513.7	0.23
9,314.0	89.52	333.99	6,587.7	2,870.9	-25.9	2,603.7	0.57
9,404.0	91.36	335.49	6,587.0	2,952.3	-64.3	2,693.7	2.64
9,494.0	90.66	334.69	6,585.4	3,033.9	-102.2	2,783.7	1.18
9,583.0	91.63	334.17	6,583.6	3,114.2	-140.6	2,872.6	1.24
9,673.0	92.42	334.43	6,580.4	3,195.2	-179.6	2,962.6	0.92
9,763.0	91.45	333.73	6,577.4	3,276.1	-218.9	3,052.5	1.33
9,853.0	90.66	334.34	6,575.7	3,357.0	-258.3	3,142.5	1.11
9,942.0	90.75	334.96	6,574.6	3,437.5	-296.4	3,231.5	0.70
10,032.0	91.01	335.57	6,573.2	3,519.2	-334.1	3,321.5	0.74
10,122.0	90.22	335.84	6,572.3	3,601.2	-371.1	3,411.5	0.93
10,211.0	91.10	335.49	6,571.3	3,682.3	-407.8	3,500.4	1.06
10,301.0	92.07	334.08	6,568.8	3,763.7	-446.1	3,590.4	1.90
10,391.0	92.59	333.64	6,565.1	3,844.4	-485.7	3,680.3	0.76
10,481.0	91.28	333.90	6,562.1	3,925.1	-525.5	3,770.2	1.48
10,570.0	89.52	334.43	6,561.4	4,005.2	-564.3	3,859.2	2.07
10,660.0	90.22	333.99	6,561.7	4,086.3	-603.4	3,949.2	0.92
10,750.0	90.84	334.43	6,560.8	4,167.3	-642.6	4,039.2	0.84
10,840.0	91.01	334.78	6,559.4	4,248.6	-681.2	4,129.2	0.43
10,929.0	89.87	334.96	6,558.7	4,329.1	-719.0	4,218.2	1.30
11,019.0	90.84	335.05	6,558.1	4,410.7	-757.0	4,308.2	1.08
11,109.0	91.01	334.08	6,556.7	4,492.0	-795.6	4,398.2	1.09
11,198.0	90.13	334.96	6,555.8	4,572.3	-833.9	4,487.2	1.40
11,288.0	90.31	334.61	6,555.4	4,653.7	-872.3	4,577.2	0.44
11,378.0	91.19	335.66	6,554.3	4,735.4	-910.1	4,667.2	1.52
11,468.0	89.78	334.78	6,553.5	4,817.1	-947.8	4,757.2	1.85



Company: Antero Resources
Project: Ritchie County WV
Site: Hornet/Myrtle Pad
Well: Hornet Unit 2H
Wellbore: Original Wellpath
Design: As Drilled

Local Co-ordinate Reference: Well Hornet Unit 2H
TVD Reference: Precision 525: Hornet Unit 2H: GL 1191+19' @ 12
MD Reference: Precision 525: Hornet Unit 2H: GL 1191+19' @ 12
North Reference: Grid
Survey Calculation Method: Minimum Curvature
Database: Oklahoma District

Survey

MD (usft)	Inc (°)	Azi (azimuth) (°)	TVD (usft)	N/S (usft)	E/W (usft)	V. Sec (usft)	DLeg (°/100usft)
11,558.0	89.69	334.17	6,553.9	4,898.3	-986.6	4,847.2	0.69
11,648.0	90.92	333.29	6,553.4	4,979.0	-1,026.4	4,937.1	1.68
11,737.0	90.04	334.26	6,552.7	5,058.8	-1,065.8	5,026.1	1.47
11,827.0	90.17	334.48	6,552.5	5,140.0	-1,104.7	5,116.1	0.28
11,917.0	90.40	333.73	6,552.1	5,221.0	-1,144.0	5,206.1	0.87
12,007.0	90.57	333.64	6,551.3	5,301.6	-1,183.9	5,296.1	0.21
12,101.0	90.66	334.08	6,550.3	5,386.0	-1,225.3	5,390.1	0.48
12,195.0	90.92	333.20	6,549.0	5,470.2	-1,267.0	5,484.1	0.98
12,290.0	90.31	334.78	6,548.0	5,555.6	-1,308.7	5,579.1	1.78
12,384.0	90.66	336.19	6,547.2	5,641.1	-1,347.7	5,673.0	1.55
12,478.0	90.84	337.86	6,546.0	5,727.6	-1,384.4	5,766.9	1.79
12,572.0	91.54	337.24	6,544.0	5,814.5	-1,420.3	5,860.8	0.99
12,667.0	91.01	334.34	6,541.9	5,901.1	-1,459.2	5,955.7	3.10
12,761.0	91.10	333.73	6,540.2	5,985.6	-1,500.4	6,049.7	0.66
12,856.0	91.01	333.46	6,538.4	6,070.7	-1,542.6	6,144.7	0.30
12,950.0	91.10	332.41	6,536.7	6,154.4	-1,585.4	6,238.6	1.12
13,044.0	90.92	334.61	6,535.0	6,238.5	-1,627.3	6,332.6	2.35
13,138.0	91.28	334.26	6,533.2	6,323.3	-1,667.8	6,426.6	0.53
13,228.0	91.63	334.17	6,530.9	6,404.3	-1,707.0	6,516.6	0.40
13,318.0	89.78	335.13	6,529.8	6,485.6	-1,745.5	6,606.5	2.32
13,408.0	89.87	335.05	6,530.1	6,567.2	-1,783.4	6,696.5	0.13
13,497.0	89.69	335.13	6,530.5	6,648.0	-1,820.9	6,785.5	0.22
13,587.0	90.40	333.64	6,530.4	6,729.1	-1,859.8	6,875.5	1.83
13,677.0	90.75	333.64	6,529.5	6,809.7	-1,899.8	6,965.5	0.39
13,767.0	91.10	333.64	6,528.0	6,890.4	-1,939.7	7,055.5	0.39
13,856.0	91.63	333.55	6,525.9	6,970.1	-1,979.3	7,144.5	0.60
13,946.0	90.75	333.99	6,524.0	7,050.8	-2,019.0	7,234.4	1.09
14,036.0	91.71	335.84	6,522.1	7,132.3	-2,057.2	7,324.4	2.32
14,125.0	90.92	335.93	6,520.1	7,213.5	-2,093.5	7,413.3	0.89
14,215.0	90.04	336.72	6,519.3	7,295.9	-2,129.7	7,503.3	1.31
14,305.0	90.66	337.60	6,518.8	7,378.8	-2,164.6	7,593.2	1.20
14,394.0	90.84	336.72	6,517.6	7,460.9	-2,199.2	7,682.1	1.01
14,484.0	91.01	335.93	6,516.1	7,543.3	-2,235.3	7,772.0	0.90
14,574.0	90.92	335.05	6,514.6	7,625.1	-2,272.6	7,862.0	0.98
14,664.0	91.28	335.13	6,512.9	7,706.8	-2,310.5	7,952.0	0.41
14,753.0	89.60	334.17	6,512.2	7,787.2	-2,348.6	8,041.0	2.17
14,843.0	90.31	334.61	6,512.3	7,868.3	-2,387.5	8,131.0	0.93
14,933.0	90.04	335.66	6,512.0	7,950.0	-2,425.4	8,221.0	1.20
15,023.0	88.64	333.03	6,513.0	8,031.1	-2,464.3	8,311.0	3.31
15,112.0	89.60	333.20	6,514.4	8,110.5	-2,504.6	8,399.9	1.10
15,202.0	90.13	334.52	6,514.6	8,191.3	-2,544.2	8,489.9	1.58
15,292.0	91.01	334.87	6,513.7	8,272.6	-2,582.7	8,579.9	1.05
15,381.0	90.48	333.99	6,512.6	8,352.9	-2,621.1	8,668.9	1.15
15,471.0	90.66	332.59	6,511.7	8,433.3	-2,661.5	8,758.9	1.57

JUN 26 2015



GEOLOGICAL SURVEY
MORGANTOWN, WV

EOW Completion Report



Company: Antero Resources
Project: Ritchie County WV
Site: Hornet/Myrtle Pad
Well: Hornet Unit 2H
Wellbore: Original Wellpath
Design: As Drilled

Local Co-ordinate Reference: Well Hornet Unit 2H
TVD Reference: Precision 525: Hornet Unit 2H: GL 1191+19' @ 12
MD Reference: Precision 525: Hornet Unit 2H: GL 1191+19' @ 12
North Reference: Grid
Survey Calculation Method: Minimum Curvature
Database: Oklahoma District

Survey

MD (usft)	Inc (°)	Azi (azimuth) (°)	TVD (usft)	N/S (usft)	E/W (usft)	V. Sec (usft)	DLeg (°/100usft)
15,561.0	91.10	330.48	6,510.3	8,512.4	-2,704.4	8,848.7	2.39
15,651.0	91.10	332.32	6,508.6	8,591.4	-2,747.5	8,938.6	2.04
15,741.0	90.13	332.41	6,507.6	8,671.1	-2,789.3	9,028.5	1.08
15,830.0	90.13	334.61	6,507.4	8,750.8	-2,828.9	9,117.5	2.47
15,920.0	91.01	335.66	6,506.5	8,832.4	-2,866.8	9,207.5	1.52
16,010.0	90.66	334.26	6,505.2	8,914.0	-2,904.9	9,297.5	1.60
16,100.0	90.66	333.55	6,504.2	8,994.8	-2,944.5	9,387.4	0.79
16,189.0	91.01	333.38	6,502.9	9,074.4	-2,984.2	9,476.4	0.44
16,279.0	90.84	334.43	6,501.4	9,155.2	-3,023.8	9,566.4	1.18
16,369.0	91.01	334.26	6,500.0	9,236.3	-3,062.8	9,656.4	0.27
16,458.0	90.92	335.31	6,498.5	9,316.8	-3,100.7	9,745.4	1.18
16,548.0	90.31	335.49	6,497.5	9,398.7	-3,138.1	9,835.4	0.71
16,638.0	90.66	335.66	6,496.7	9,480.6	-3,175.3	9,925.3	0.43
16,728.0	88.99	334.34	6,497.0	9,562.2	-3,213.4	10,015.3	2.37
16,817.0	90.22	334.96	6,497.6	9,642.6	-3,251.5	10,104.3	1.55
16,907.0	90.66	334.08	6,496.9	9,723.8	-3,290.2	10,194.3	1.09
16,997.0	90.48	333.55	6,496.0	9,804.6	-3,329.9	10,284.3	0.62
17,087.0	90.66	332.67	6,495.1	9,884.9	-3,370.6	10,374.3	1.00
17,176.0	89.69	332.59	6,494.9	9,963.9	-3,411.5	10,463.2	1.09
17,266.0	89.60	333.46	6,495.4	10,044.1	-3,452.4	10,553.2	0.97
17,356.0	90.40	333.38	6,495.4	10,124.6	-3,492.6	10,643.2	0.89
17,445.0	89.34	334.26	6,495.6	10,204.5	-3,531.9	10,732.2	1.55
17,535.0	90.13	335.40	6,496.0	10,285.9	-3,570.2	10,822.2	1.54
17,627.0	90.84	335.57	6,495.3	10,369.6	-3,608.3	10,914.1	0.79
17,717.0	90.48	333.99	6,494.2	10,451.0	-3,646.7	11,004.1	1.80
17,806.0	88.90	330.83	6,494.7	10,529.9	-3,687.9	11,093.1	3.97
17,896.0	88.46	330.65	6,496.8	10,608.4	-3,731.9	11,182.8	0.53
17,986.0	89.52	332.41	6,498.4	10,687.5	-3,774.8	11,272.7	2.28
18,077.0	89.96	333.29	6,498.8	10,768.5	-3,816.3	11,363.6	1.08
18,165.0	90.57	334.69	6,498.4	10,847.5	-3,854.9	11,451.6	1.74
18,243.0	90.31	333.99	6,497.8	10,917.8	-3,888.7	11,529.6	0.96
18,302.0	90.31	333.99	6,497.4	10,970.9	-3,914.5	11,588.6	0.00

Design Annotations

Measured Depth (usft)	Vertical Depth (usft)	Local Coordinates		Comment
		+N/-S (usft)	+E/-W (usft)	
5,846.0	5,710.9	274.3	591.9	274.3' N 591.9' E
6,487.0	6,290.9	392.7	833.6	Sycamore
6,704.0	6,449.7	518.8	907.4	Middlesex
6,906.0	6,558.3	685.6	930.9	Burkett
6,986.0	6,589.8	759.0	926.3	Tully
7,061.0	6,612.5	829.6	916.0	Marcellus

Checked By: _____ Approved By: _____ Date: _____