



Noble Energy PEN2LHS Inc Only<10+MWD 0ft to 13561ft MD Survey Report

(Non-Def Survey)

Report Date: February 21, 2014 - 09:58 AM
Client: Noble Energy
Field: WV Ritchie County (NAD27)
Structure / Slot: Noble Energy PEN2 Pod / PEN2LHS
Well: PEN2LHS
Borehole: Original Borehole
UW / API#: Unknown / Unknown
Survey Name: Noble Energy PEN2LHS Inc Only<10+MWD 0ft to 13561ft MD
Survey Date: February 04, 2014
Tort / AHD / DOI / ERD Ratio: 238.113 \* (8669.317 ft / 6.647 \* 1.375)
Coordinate Reference System: NAD27 West Virginia State Plane, Northern Zone, US Foot
Location Lat / Long: N 39° 20' 11.88000" W 81° 04' 45.14000"
Location Grid NE YX: N 308320 124 MUS, E 1572199 842 MUS
CRS Grid Convergence Angle: -0.9647 \*
Grid Scale Factor: 0.99995342
Version / Patch: 2.7.1043.0
Vertical / DLS Computation: Minimum Curvature / Lubinski
Vertical Section Azimuth: 333.575 \*(Grid North)
Vertical Section Origin: 0.000 ft, 0.000 ft
TVD Reference Datum: KB
Gravity Model: 1099.980 ft above MSL
Magnetic Declination: 7.853 \*
Magnetic Declination: 1073.980 ft above MSL
Total Gravity Field Strength: 999.3087mgm (g.80665 Based)
Gravity Model: GARM
Total Magnetic Field Strength: 52261.238 nT
Magnetic Dip Angle: 66.860 \*
Declination Date: February 04, 2014
Magnetic Declination Model: HDGM 2013
North Reference: Grid North
Grid Convergence Used: -0.9647 \*
Total Corr Mag North-xGrid: -4.8686 \*
North: Well Head
Local Coord Referenced To: Well Head

Table with columns: Comments, MD (ft), Incl (°), Azim Grid (°), TVD (ft), TVDSS (ft), VSEC (ft), NS (ft), EW (ft), DLS (ft/100ft), BR (ft/100ft), TR (ft/100ft), Northing (ftUS), Easting (ftUS), Latitude (N/S ° ' " ), Longitude (E/W ° ' " ), Directional Difficulty Index. Rows include well depth data from 0.00 to 8280.00 ft.

RECEIVED
Office of Oil and Gas
Feb 23 2015

Comments	MD (ft)	Incl (°)	Azim Grid (°)	TVD (ft)	TVDSS (ft)	VSEC (ft)	NS (ft)	EW (ft)	DLB (ft/100ft)	GR (ft/100ft)	TR (ft/100ft)	Northing (ft)	Easting (ft)	Latitude (N/S ° ' ")	Longitude (E/W ° ' ")	Directional Difficulty Index
	6375.00	89.76	319.39	6294.73	5194.76	2105.57	2429.39	151.24	1.04	0.25	-1.01	310746.40	1572350.86	N 39 20 35.58 W	81 0 43.74	5.92
	8471.00	90.24	318.62	6294.74	5194.76	2198.48	2496.85	88.27	0.05	0.30	-0.80	310818.65	1572287.90	N 39 20 36.59 W	81 0 44.55	5.94
	8567.00	90.17	318.66	6294.39	5194.41	2291.24	2570.90	24.83	0.08	-0.07	0.04	310690.90	1572224.47	N 39 20 37.59 W	81 0 45.37	5.96
	8662.00	90.24	319.26	6294.06	5194.08	2383.16	2642.56	-37.54	0.64	0.07	0.63	310982.55	1572162.10	N 39 20 37.99 W	81 0 46.18	5.97
	8758.00	90.27	319.13	6293.03	5193.65	2476.16	2715.22	-100.28	0.14	0.03	-0.14	311035.21	1572099.37	N 39 20 38.70 W	81 0 47.00	5.98
	8854.00	90.07	319.00	6293.34	5193.36	2569.09	2787.74	-183.18	0.25	-0.21	-0.14	311107.73	1572036.47	N 39 20 39.40 W	81 0 47.81	6.01
	8940.00	90.24	318.29	6293.00	5193.11	2691.10	2859.60	-225.32	0.35	0.18	0.31	311179.56	1571974.33	N 39 20 40.10 W	81 0 48.62	6.02
	9045.00	89.67	318.70	6292.91	5192.93	2754.00	2932.06	-268.31	0.68	-0.28	-0.61	311252.03	1571911.35	N 39 20 40.51 W	81 0 49.44	6.04
	9141.00	89.69	319.27	6293.19	5193.21	2846.91	3004.48	-351.31	0.66	-0.29	0.59	311324.46	1571848.35	N 39 20 41.51 W	81 0 50.25	6.05
	9236.00	89.58	319.38	6293.79	5193.81	2938.98	3076.53	-413.23	0.16	-0.11	0.12	311396.50	1571786.44	N 39 20 42.21 W	81 0 51.06	6.07
	9332.00	89.86	318.86	6294.42	5194.44	3031.94	3149.12	-476.04	0.53	0.07	-0.52	311469.09	1571723.62	N 39 20 42.92 W	81 0 51.87	6.08
	9428.00	89.17	318.81	6295.40	5195.42	3124.76	3221.40	-539.22	0.52	-0.51	-0.07	311541.37	1571660.45	N 39 20 43.62 W	81 0 52.69	6.10
	9523.00	89.24	318.51	6296.72	5196.74	3216.56	3292.72	-601.96	0.32	0.07	-0.32	311612.68	1571597.71	N 39 20 44.32 W	81 0 53.51	6.11
	9618.00	90.14	319.51	6297.23	5197.25	3308.52	3364.42	-664.27	1.42	0.95	1.05	311684.38	1571535.40	N 39 20 45.02 W	81 0 54.32	6.13
	9713.00	89.93	319.72	6297.17	5197.19	3400.71	3435.79	-725.82	0.31	-0.22	0.22	311756.74	1571473.86	N 39 20 45.72 W	81 0 55.11	6.14
	9808.00	89.97	318.92	6297.26	5197.28	3492.79	3508.83	-787.75	0.84	0.04	-0.84	311828.76	1571411.93	N 39 20 46.42 W	81 0 55.92	6.16
	9904.00	90.62	320.01	6296.76	5196.78	3585.89	3581.79	-850.14	1.32	0.68	1.14	311901.74	1571349.55	N 39 20 47.13 W	81 0 56.73	6.17
	9999.00	90.79	320.23	6295.59	5195.61	3678.27	3654.68	-911.04	0.29	0.18	0.23	311974.03	1571288.64	N 39 20 47.84 W	81 0 57.52	6.19
	10095.00	89.83	319.55	6295.07	5195.09	3771.54	3728.10	-972.89	1.23	-1.00	-0.71	312046.05	1571226.80	N 39 20 48.56 W	81 0 58.32	6.20
	10190.00	89.17	317.96	6295.89	5195.91	3862.39	3799.72	-1034.92	1.93	-0.70	-1.90	312118.96	1571164.77	N 39 20 49.25 W	81 0 59.13	6.22
	10284.00	89.62	318.12	6296.90	5196.92	3953.88	3880.31	-1098.49	0.55	0.47	0.27	312190.24	1571101.20	N 39 20 49.93 W	81 0 59.95	6.23
	10379.00	89.63	319.86	6297.35	5197.37	4045.82	3949.99	-1160.83	1.84	0.22	1.63	312260.92	1571038.67	N 39 20 50.63 W	81 0 1 0.78	6.25
	10475.00	90.93	322.54	6296.72	5196.74	4139.58	4015.80	-1220.96	3.02	1.15	2.79	312335.73	1570978.73	N 39 20 51.36 W	81 0 1 1.54	6.26
	10570.00	91.24	323.65	6294.92	5194.94	4232.98	4091.75	-1278.01	1.21	0.33	1.17	312411.67	1570921.68	N 39 20 52.10 W	81 0 1 2.28	6.28
	10665.00	90.45	321.80	6293.52	5193.54	4326.27	4167.33	-1335.54	2.12	-0.83	-1.95	312487.25	1570864.17	N 39 20 52.84 W	81 0 1 3.03	6.29
	10759.00	90.41	320.75	6292.81	5192.83	4418.10	4242.66	-1394.34	1.12	-0.04	-1.12	312560.56	1570805.37	N 39 20 53.55 W	81 0 1 3.80	6.31
	10854.00	89.93	320.10	6292.53	5192.55	4510.61	4313.88	-1454.80	0.85	-0.51	-0.68	312633.80	1570744.05	N 39 20 54.27 W	81 0 1 4.56	6.32
	10948.00	91.17	323.83	6291.63	5191.65	4602.07	4387.95	-1512.77	4.18	1.32	3.97	312707.82	1570686.95	N 39 20 54.99 W	81 0 1 5.33	6.34
	11043.00	90.62	324.94	6290.14	5190.16	4696.43	4465.12	-1568.06	1.30	-0.58	1.17	312785.03	1570631.84	N 39 20 55.74 W	81 0 1 6.05	6.35
	11138.00	90.17	320.09	6289.49	5189.51	4790.49	4543.43	-1621.87	1.30	-0.47	1.21	312863.33	1570577.85	N 39 20 56.51 W	81 0 1 6.78	6.36
	11233.00	91.13	328.58	6288.41	5188.43	4884.91	4623.39	-1673.13	2.81	1.01	2.62	312943.29	1570520.59	N 39 20 57.29 W	81 0 1 7.43	6.38
	11328.00	90.93	328.20	6287.44	5187.46	4980.51	4705.14	-1723.45	1.21	-1.15	-0.40	313025.04	1570476.28	N 39 20 58.09 W	81 0 1 8.08	6.39
	11424.00	90.79	329.64	6286.78	5186.78	5075.20	4786.50	-1772.49	1.71	0.80	1.52	313106.39	1570427.24	N 39 20 58.89 W	81 0 1 8.73	6.40
	11520.00	91.51	329.77	6284.83	5184.85	5170.96	4869.37	-1820.90	0.76	0.75	0.14	313189.26	1570378.83	N 39 20 59.70 W	81 0 1 9.36	6.42
	11616.00	90.76	327.68	6282.93	5182.95	5266.59	4950.40	-1870.73	2.31	-0.78	-2.18	313271.28	1570329.00	N 39 21 0 50 W	81 0 1 10.01	6.43
	11711.00	90.38	325.17	6281.99	5182.01	5360.84	5030.54	-1921.26	2.67	-0.40	-2.64	313350.42	1570278.48	N 39 21 0 37 W	81 0 1 10.70	6.45
	11806.00	89.97	322.75	6281.09	5181.11	5454.49	5107.35	-1978.15	2.58	-0.43	-2.58	313427.23	1570220.50	N 39 21 0 22 W	81 0 1 11.42	6.46
	11901.00	91.00	322.13	6280.89	5180.91	5547.70	5182.05	-2037.00	1.27	1.08	-0.65	313502.53	1570162.89	N 39 21 0 7 W	81 0 1 12.18	6.47
	11996.00	91.03	320.12	6279.21	5179.23	5640.45	5256.60	-2098.67	2.12	0.03	-2.12	313576.47	1570103.08	N 39 21 0 46 W	81 0 1 12.95	6.48
	12092.00	91.27	318.58	6277.28	5177.30	5733.48	5329.41	-2159.20	1.64	0.25	-1.83	313649.27	1570044.50	N 39 21 0 19 W	81 0 1 13.78	6.50
	12187.00	91.79	318.30	6274.74	5174.76	5824.69	5399.34	-2224.44	2.44	0.55	-2.39	313719.20	1569978.31	N 39 21 0 8 W	81 0 1 14.60	6.51
	12281.00	91.65	315.94	6271.82	5171.84	5914.10	5466.55	-2289.10	1.35	-0.15	-1.34	313796.41	1569910.66	N 39 21 0 52 W	81 0 1 15.45	6.52
	12375.00	90.86	314.72	6269.86	5169.88	6003.12	5532.86	-2355.69	0.91	-0.64	-0.34	313852.72	1569844.07	N 39 21 0 16 W	81 0 1 16.31	6.53
	12470.00	90.65	314.67	6268.61	5168.63	6093.00	5599.67	-2423.21	0.23	-0.22	-0.05	313919.52	1569776.55	N 39 21 0 81 W	81 0 1 17.18	6.54
	12565.00	89.93	314.69	6268.13	5168.15	6182.93	5666.58	-2486.65	0.78	-0.78	0.23	313986.44	1569708.12	N 39 21 0 74 W	81 0 1 18.06	6.55
	12660.00	89.59	314.75	6268.53	5168.55	6272.69	5733.55	-2550.03	0.39	-0.36	-0.15	314053.40	1569641.74	N 39 21 0 11 W	81 0 1 18.93	6.56
	12755.00	89.55	314.58	6269.24	5169.26	6362.76	5800.33	-2615.00	0.18	-0.04	-0.18	314120.17	1569574.17	N 39 21 0 78 W	81 0 1 19.80	6.57
	12851.00	89.86	314.13	6269.90	5169.92	6453.40	5867.44	-2684.24	0.48	0.11	-0.47	314187.28	1569505.54	N 39 21 0 41 W	81 0 1 20.69	6.58
	12946.00	89.83	314.68	6270.24	5170.26	6543.13	5933.91	-2753.10	0.64	0.28	0.56	314253.75	1569437.67	N 39 21 0 06 W	81 0 1 21.57	6.59
	13042.00	90.21	315.58	6270.13	5170.15	6634.20	6001.95	-2823.83	0.98	0.29	0.94	314321.78	1569369.95	N 39 21 0 17 W	81 0 1 22.44	6.60
	13137.00	90.14	315.73	6269.64	5169.66	6724.59	6069.89	-2896.23	0.17	-0.07	0.16	314389.72	1569303.55	N 39 21 11 36 W	81 0 1 23.30	6.61
	13233.00	90.38	318.94	6269.40	5169.42	6818.28	6139.33	-2962.51	1.28	0.25	1.26	314458.16	1569237.27	N 39 21 12 08 W	81 0 1 24.16	6.62
	13328.00	90.34	317.82	6268.80	5168.82	6907.46	6209.12	-3026.96	0.72	-0.04	0.72	314526.95	1569172.83	N 39 21 12 73 W	81 0 1 25.00	6.63
	13424.00	90.45	317.40	6268.14	5168.16	6999.71	6279.91	-3091.81	0.28	0.11	-0.23	314599.73	1569107.99	N 39 21 13 42 W	81 0 1 25.84	6.64
Final Survey 20-Feb-14	13481.00	90.55	317.67	6267.64	5167.68	7054.51	6322.03	-3130.21	0.84	0.18	0.82	314641.64	1569069.58	N 39 21 13 63 W	81 0 1 26.34	6.64
PTB	13561.00	90.55	317.67	6266.88	5166.90	7131.52	6361.35	-3183.88	0.00	0.00	0.00	314701.17	1569015.92	N 39 21 14 41 W	81 0 1 27.03	6.65

Survey Type: Non-Def Survey

Survey Error Model: ISCWSA Rev 0 \*\*\* 3-D 95 000% Confidence 2.7955 sigma

Survey Program:

Description	Part	MD From (ft)	MD To (ft)	EOU Freq (ft)	Hole Size (in)	Casing Diameter (in)	Survey Tool Type	Borehole / Survey
	1	0.000	26.000	Act Sns	30.000	30.000	SLB_INC_ONLY<10-Depth Only	Original Borehole / Noble Energy PENZLHS Inc Only<10-MWD Off to 13561ft MD
	1	26.000	713.000	1.98 425	30.000	30.000	SLB_INC_ONLY<10	Original Borehole / Noble Energy PENZLHS Inc Only<10-MWD Off
	1	713.000	2716.000	Act Sns	30.000	30.000	SLB_INC_ONLY<10	Original Borehole / Noble Energy PENZLHS Inc Only<10-MWD Off
	1	2716.000	5624.000	Act Sns	30.000	30.000	SLB_MWD-DMAG	Original Borehole / Noble Energy PENZLHS Inc Only<10-MWD Off
	1	5624.000	13481.000	Act Sns	30.000	30.000	SLB_MWD-STD	Original Borehole / Noble Energy PENZLHS

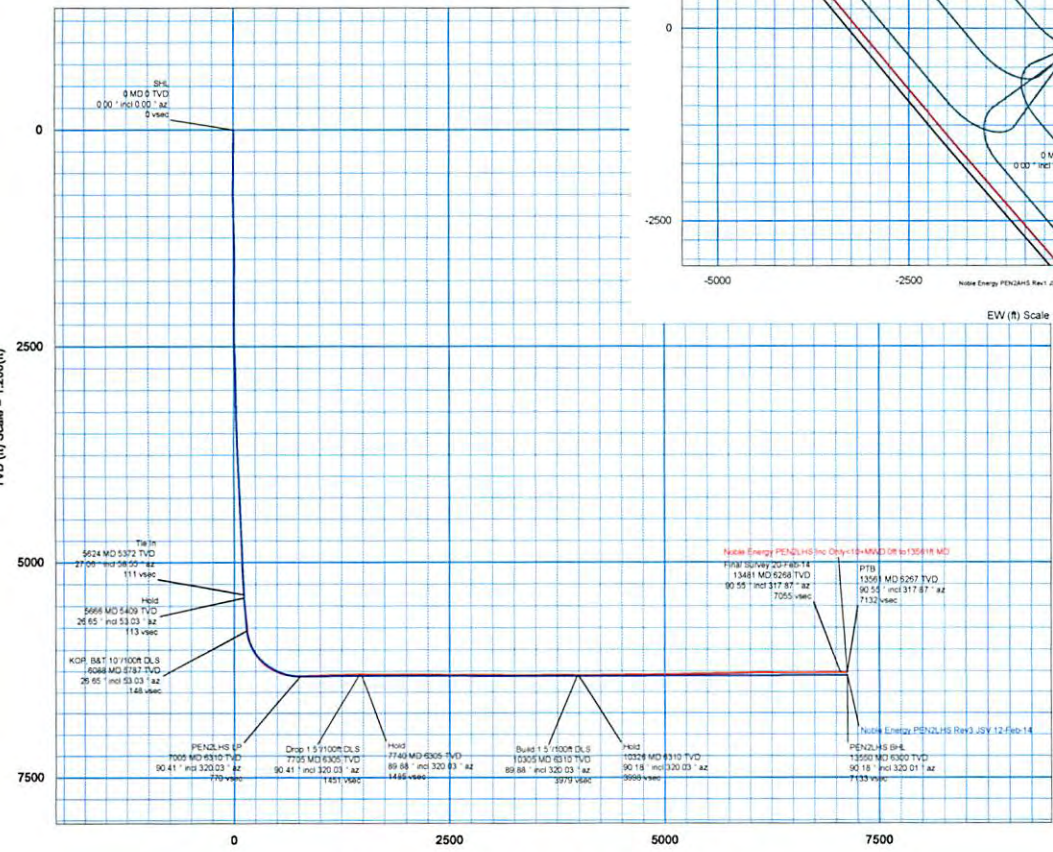
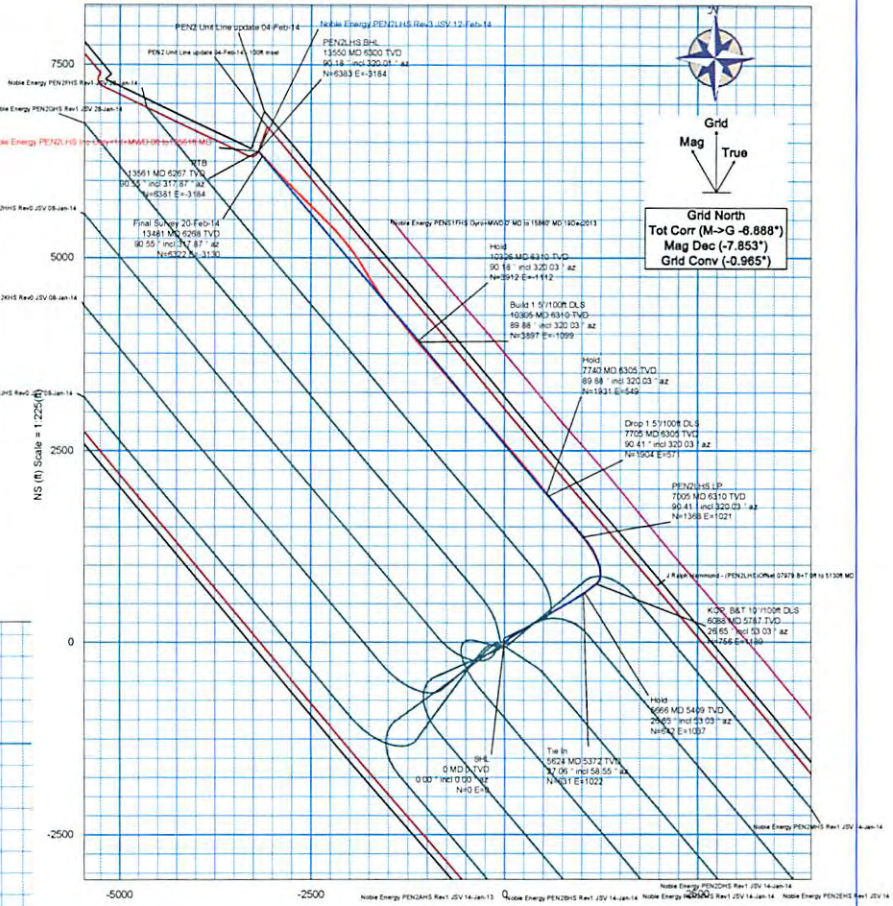


<b>Borehole:</b> <b>Original Borehole</b>	<b>Well:</b> <b>PEN2LHS</b>	<b>Field:</b> <b>WV Ritchie County (NAD27)</b>	<b>Structure:</b> <b>Nomac 78</b>
<b>Gravity &amp; Magnetic Parameters</b> Model: HGM 2013 Dip: 66.89° Date: 04-Feb-2014 MagDec: -7.853° FS: 52291.238mT Gravity FS: 999.309mgal (9.80665 Based)		<b>Surface Location</b> NAD27 West Virginia State Plane, Northern Zone, US Feet Lat: N 39 20 11.88 Northing: 306320.124ft US Grid Conv: -0.9647° Lon: W 81 0 45.14 Easting: 1572199.842ft US Scale Fact: 0.99996242	
<b>Miscellaneous</b> Slot: PEN2LHS TVD Ref: KB(1099 90ft above MSL) Plan: Noble Energy PEN2LHS Inc Only+10-MWD OR to 13561ft MD			

Critical Points							
Critical Point	MD	INCL	AZIM	TVD	VSEC	N+(V)-1	E+(W)-1
SHL	0.00	0.00	0.00	0.00	0.00	0.00	0.00
Final Survey 20-Feb-14	13481.00	90.55	317.87	6287.64	7054.51	6222.03	-1130.21 0.94
PTB	13561.00	90.55	317.87	6296.88	7131.52	6381.35	-1183.89 0.90

PART	Seq	Survey Tool	Vendor/Tool	Well Size	LOGS	MD From	MD To	Survey Frequency	EDU Size (Secs)	EDU Size (Mins)	Comments
1	1	SLB_NC_ONLY+10 Depth Only		30	30	0	26	Act Sns	1.25	1.25	
1	2	SLB_NC_ONLY+10		30	30	26	713	1088.425	18.85	18.85	
1	3	SLB_NC_ONLY+10		30	30	713	2718	Act Sns	140.45	140.54	
1	4	SLB_MWD+DMAS		30	30	2718	5624	Act Sns	153.42	150.54	
1	5	SLB_MWD+SD		30	30	5624	13481	Act Sns	248.58	152.08	
1	6	SLB_BUNCH+TEND		30	30	13481	13561	Act Sns	284.55	152.95	

Surface Location							
Northing	39829.124	Easting	1572199.842	Latitude	N 39 20 11.88	Longitude	W 81 0 45.14
Target Name	Shape	Dimension	Latitude	Longitude	Northing	Easting	TVD
PEN2 Line Update 04-Feb-14 130R well	Point	N/A	N 39 20 11.54	W 81 0 48.23	308298.94	1572113.09	1098.98
PEN2 Line Update 04-Feb-14	Point	N/A	N 39 20 11.54	W 81 0 48.23	308298.94	1572113.09	1098.98
PEN2LHS BML	Point	N/A	N 39 21 14.42	W 81 1 27.03	314752.58	1566018.21	8300.00
PEN2LHS LP	Point	N/A	N 39 20 28.56	W 81 0 33.44	309887.88	1573205.07	8314.00



- Noble Energy PEN2LHS Inc Only+10-MWD OR to 13561ft MD
- Noble Energy PEN2LHS Rev1 20-Jan-14
- Noble Energy PEN2LHS Rev2 20-Jan-14
- Noble Energy PEN2LHS Rev3 20-Jan-14
- Noble Energy PEN2LHS Rev4 20-Jan-14
- Noble Energy PEN2LHS Rev5 20-Jan-14
- Noble Energy PEN2LHS Rev6 20-Jan-14
- Noble Energy PEN2LHS Rev7 20-Jan-14
- Noble Energy PEN2LHS Rev8 20-Jan-14
- Noble Energy PEN2LHS Rev9 20-Jan-14
- Noble Energy PEN2LHS Rev10 20-Jan-14
- Noble Energy PEN2LHS Rev11 20-Jan-14
- Noble Energy PEN2LHS Rev12 20-Jan-14
- Noble Energy PEN2LHS Rev13 20-Jan-14
- Noble Energy PEN2LHS Rev14 20-Jan-14
- Noble Energy PEN2LHS Rev15 20-Jan-14
- Noble Energy PEN2LHS Rev16 20-Jan-14
- Noble Energy PEN2LHS Rev17 20-Jan-14
- Noble Energy PEN2LHS Rev18 20-Jan-14
- Noble Energy PEN2LHS Rev19 20-Jan-14
- Noble Energy PEN2LHS Rev20 20-Jan-14
- Noble Energy PEN2LHS Rev21 20-Jan-14
- Noble Energy PEN2LHS Rev22 20-Jan-14
- Noble Energy PEN2LHS Rev23 20-Jan-14
- Noble Energy PEN2LHS Rev24 20-Jan-14
- Noble Energy PEN2LHS Rev25 20-Jan-14
- Noble Energy PEN2LHS Rev26 20-Jan-14
- Noble Energy PEN2LHS Rev27 20-Jan-14
- Noble Energy PEN2LHS Rev28 20-Jan-14
- Noble Energy PEN2LHS Rev29 20-Jan-14
- Noble Energy PEN2LHS Rev30 20-Jan-14
- Noble Energy PEN2LHS Rev31 20-Jan-14
- Noble Energy PEN2LHS Rev32 20-Jan-14
- Noble Energy PEN2LHS Rev33 20-Jan-14
- Noble Energy PEN2LHS Rev34 20-Jan-14
- Noble Energy PEN2LHS Rev35 20-Jan-14
- Noble Energy PEN2LHS Rev36 20-Jan-14
- Noble Energy PEN2LHS Rev37 20-Jan-14
- Noble Energy PEN2LHS Rev38 20-Jan-14
- Noble Energy PEN2LHS Rev39 20-Jan-14
- Noble Energy PEN2LHS Rev40 20-Jan-14
- Noble Energy PEN2LHS Rev41 20-Jan-14
- Noble Energy PEN2LHS Rev42 20-Jan-14
- Noble Energy PEN2LHS Rev43 20-Jan-14
- Noble Energy PEN2LHS Rev44 20-Jan-14
- Noble Energy PEN2LHS Rev45 20-Jan-14
- Noble Energy PEN2LHS Rev46 20-Jan-14
- Noble Energy PEN2LHS Rev47 20-Jan-14
- Noble Energy PEN2LHS Rev48 20-Jan-14
- Noble Energy PEN2LHS Rev49 20-Jan-14
- Noble Energy PEN2LHS Rev50 20-Jan-14
- Noble Energy PEN2LHS Rev51 20-Jan-14
- Noble Energy PEN2LHS Rev52 20-Jan-14
- Noble Energy PEN2LHS Rev53 20-Jan-14
- Noble Energy PEN2LHS Rev54 20-Jan-14
- Noble Energy PEN2LHS Rev55 20-Jan-14
- Noble Energy PEN2LHS Rev56 20-Jan-14
- Noble Energy PEN2LHS Rev57 20-Jan-14
- Noble Energy PEN2LHS Rev58 20-Jan-14
- Noble Energy PEN2LHS Rev59 20-Jan-14
- Noble Energy PEN2LHS Rev60 20-Jan-14
- Noble Energy PEN2LHS Rev61 20-Jan-14
- Noble Energy PEN2LHS Rev62 20-Jan-14
- Noble Energy PEN2LHS Rev63 20-Jan-14
- Noble Energy PEN2LHS Rev64 20-Jan-14
- Noble Energy PEN2LHS Rev65 20-Jan-14
- Noble Energy PEN2LHS Rev66 20-Jan-14
- Noble Energy PEN2LHS Rev67 20-Jan-14
- Noble Energy PEN2LHS Rev68 20-Jan-14
- Noble Energy PEN2LHS Rev69 20-Jan-14
- Noble Energy PEN2LHS Rev70 20-Jan-14
- Noble Energy PEN2LHS Rev71 20-Jan-14
- Noble Energy PEN2LHS Rev72 20-Jan-14
- Noble Energy PEN2LHS Rev73 20-Jan-14
- Noble Energy PEN2LHS Rev74 20-Jan-14
- Noble Energy PEN2LHS Rev75 20-Jan-14
- Noble Energy PEN2LHS Rev76 20-Jan-14
- Noble Energy PEN2LHS Rev77 20-Jan-14
- Noble Energy PEN2LHS Rev78 20-Jan-14
- Noble Energy PEN2LHS Rev79 20-Jan-14
- Noble Energy PEN2LHS Rev80 20-Jan-14
- Noble Energy PEN2LHS Rev81 20-Jan-14
- Noble Energy PEN2LHS Rev82 20-Jan-14
- Noble Energy PEN2LHS Rev83 20-Jan-14
- Noble Energy PEN2LHS Rev84 20-Jan-14
- Noble Energy PEN2LHS Rev85 20-Jan-14
- Noble Energy PEN2LHS Rev86 20-Jan-14
- Noble Energy PEN2LHS Rev87 20-Jan-14
- Noble Energy PEN2LHS Rev88 20-Jan-14
- Noble Energy PEN2LHS Rev89 20-Jan-14
- Noble Energy PEN2LHS Rev90 20-Jan-14
- Noble Energy PEN2LHS Rev91 20-Jan-14
- Noble Energy PEN2LHS Rev92 20-Jan-14
- Noble Energy PEN2LHS Rev93 20-Jan-14
- Noble Energy PEN2LHS Rev94 20-Jan-14
- Noble Energy PEN2LHS Rev95 20-Jan-14
- Noble Energy PEN2LHS Rev96 20-Jan-14
- Noble Energy PEN2LHS Rev97 20-Jan-14
- Noble Energy PEN2LHS Rev98 20-Jan-14
- Noble Energy PEN2LHS Rev99 20-Jan-14
- Noble Energy PEN2LHS Rev100 20-Jan-14