

# RECEIVED

JUN 23 2015

WR-35  
Rev. 8/23/13

Page \_\_\_ of \_\_\_

WV GEOLOGICAL SURVEY  
MORGANTOWN, WV

State of West Virginia  
Department of Environmental Protection - Office of Oil and Gas  
Well Operator's Report of Well Work

API 47 - 085 - 10082 County Ritchie District Clay  
Quad Pullman 7.5' Pad Name Edwin Pad Field/Pool Name ---  
Farm name Quimby, Franklin P. Well Number Myrtle Unit 2H  
Operator (as registered with the OOG) Antero Resources Corporation  
Address 1615 Wynkoop St. City Denver State CO Zip 80202

As Drilled location NAD 83/UTM Attach an as-drilled plat, profile view, and deviation survey  
Top hole Northing 4342366m Easting 508388m  
Landing Point of Curve Northing 4342738.56m Easting 508961.05m  
Bottom Hole Northing 4345782m Easting 507511m

Elevation (ft) 1191' GL Type of Well  New  Existing Type of Report  Interim  Final  
Permit Type  Deviated  Horizontal  Horizontal 6A  Vertical Depth Type  Deep  Shallow  
Type of Operation  Convert  Deepen  Drill  Plug Back  Redrilling  Rework  Stimulate  
Well Type  Brine Disposal  CBM  Gas  Oil  Secondary Recovery  Solution Mining  Storage  Other \_\_\_\_\_  
Type of Completion  Single  Multiple Fluids Produced  Brine  Gas  NGL  Oil  Other \_\_\_\_\_  
Drilled with  Cable  Rotary

Drilling Media Surface hole  Air  Mud  Fresh Water Intermediate hole  Air  Mud  Fresh Water  Brine  
Production hole  Air  Mud  Fresh Water  Brine

Mud Type(s) and Additive(s)

Air- Foam & 4% KCL

Mud- Polymer

Date permit issued 12/30/2013 Date drilling commenced 1/29/2014 Date drilling ceased 6/28/2014  
Date completion activities began 7/17/2014 Date completion activities ceased 2/24/2015  
Verbal plugging (Y/N) N/A Date permission granted N/A Granted by N/A

Please note: Operator is required to submit a plugging application within 5 days of verbal permission to plug

Freshwater depth(s) ft 49' Open mine(s) (Y/N) depths No  
Salt water depth(s) ft None Identified Void(s) encountered (Y/N) depths No  
Coal depth(s) ft None Identified Cavern(s) encountered (Y/N) depths No  
Is coal being mined in area (Y/N) No

Reviewed by: \_\_\_\_\_

JUN 23 2015

WV GEOLOGICAL SURVEY  
MORGANTOWN, WV

WR-35  
Rev. 8/23/13

Page \_\_\_ of \_\_\_

API 47-085 - 10082 Farm name Quimby, Franklin P. Well number Myrtle Unit 2H

CASING STRINGS	Hole Size	Casing Size	Depth	New or Used	Grade wt/ft	Basket Depth(s)	Did cement circulate (Y/N) * Provide details below*
Conductor	24"	20"	40'	New	51# H-40	N/A	Y
Surface	17- 1/2"	13- 3/8"	460'	New	54.50# J-55	N/A	Y
Coal							
Intermediate 1	12-1/4"	9-5/8"	2664'	New	36# J-55	N/A	Y
Intermediate 2							
Intermediate 3							
Production	8-3/4" & 8-1/2"	5-1/2"	18758'	New	23# P-110	N/A	Y
Tubing		2-3/8"	7450'		5.95# N-80	N/A	
Packer type and depth set		N/A					

Comment Details \_\_\_\_\_

CEMENT DATA	Class/Type of Cement	Number of Sacks	Slurry wt (ppg)	Yield (ft <sup>3</sup> /sks)	Volume (ft <sup>3</sup> )	Cement Top (MD)	WOC (hrs)
Conductor	Class A	200 sx	15.6	1.18	38	0'	8 Hrs.
Surface	Class A	551 sx	15.6	1.18	320	0'	8 Hrs.
Coal							
Intermediate 1	Class A	1036 sx	15.6	1.18	834	0'	8 Hrs.
Intermediate 2							
Intermediate 3							
Production	Class H	1067 sx (Lead) 1790 sx (Tail)	14.5 Lead 15.2 Tail	1.30 Lead 1.86 Tail	3802	~500' into Intermediate Casing	8 Hrs.
Tubing							

Drillers TD (ft) 18758' MD, 6501' TVD (BHL), 6635' TVD (Deepest Point Drilled) Loggers TD (ft) 18758'  
Deepest formation penetrated Marcellus Plug back to (ft) N/A  
Plug back procedure N/A

Kick off depth (ft) 6818'

\*\* This is a subsequent well. Antero only runs wireline logs on one well on a multi-well pad (Hornet Unit 1H API #47-085-10062). Please reference the wireline logs submitted with Form WR-35 for Hornet Unit 1H. A Cement Bond Log has been included with this submittal.

Check all wireline logs run  caliper  density  deviated/directional  induction  neutron  resistivity  gamma ray  temperature  sonic  
Well cored  Yes  No  Conventional  Sidewall Were cuttings collected  Yes  No

DESCRIBE THE CENTRALIZER PLACEMENT USED FOR EACH CASING STRING \_\_\_\_\_

Conductor- 0  
Surface- 1 above guide shoe, 1 above insert float, 1 every 4th joint to surface  
Intermediate- 1 above float joint, 1 above float collar, 1 every 4th joint to surface  
Production- 1 above float joint, 1 below float collar, 1 every 3rd joint to top of cement

WAS WELL COMPLETED AS SHOT HOLE  Yes  No DETAILS \_\_\_\_\_

WAS WELL COMPLETED OPEN HOLE?  Yes  No DETAILS \_\_\_\_\_

WERE TRACERS USED  Yes  No TYPE OF TRACER(S) USED Radioactive + Chemical





RECEIVED

JUN 23 2015

WV GEOLOGICAL SURVEY  
MORGANTOWN, WV

API 47-085-10082 Farm Name Quimby, Franklin P. Well Number Myrtle Unit 2H					
EXHIBIT 1					
Stage No.	Perforation Date	Perforated from MD ft.	Perforated to MD ft.	Number of Perforations	Formations
1	17-Jul-14	18,499	18,667	60	Marcellus
2	24-Sep-14	18,299	18,468	60	Marcellus
3	25-Sep-14	18,100	18,268	60	Marcellus
4	25-Sep-14	17,900	18,069	60	Marcellus
5	25-Sep-14	17,701	17,869	60	Marcellus
6	26-Sep-14	17,502	17,670	60	Marcellus
7	27-Sep-14	17,302	17,470	60	Marcellus
8	27-Sep-14	17,103	17,271	60	Marcellus
9	28-Sep-14	16,903	17,071	60	Marcellus
10	28-Sep-14	16,704	16,872	60	Marcellus
11	28-Sep-14	16,504	16,673	60	Marcellus
12	28-Sep-14	16,305	16,473	60	Marcellus
13	29-Sep-14	16,105	16,274	60	Marcellus
14	29-Sep-14	15,906	16,074	60	Marcellus
15	29-Sep-14	15,707	15,875	60	Marcellus
16	29-Sep-14	15,507	15,675	60	Marcellus
17	30-Sep-14	15,308	15,476	60	Marcellus
18	30-Sep-14	15,108	15,276	60	Marcellus
19	30-Sep-14	14,909	15,077	60	Marcellus
20	1-Oct-14	14,709	14,878	60	Marcellus
21	1-Oct-14	14,510	14,678	60	Marcellus
22	1-Oct-14	14,310	14,479	60	Marcellus
23	1-Oct-14	14,111	14,279	60	Marcellus
24	2-Oct-14	13,912	14,080	60	Marcellus
25	2-Oct-14	13,712	13,880	60	Marcellus
26	2-Oct-14	13,513	13,681	60	Marcellus
27	2-Oct-14	13,313	13,481	60	Marcellus
28	3-Oct-14	13,114	13,282	60	Marcellus
29	3-Oct-14	12,914	13,083	60	Marcellus
30	3-Oct-14	12,715	12,883	60	Marcellus
31	3-Oct-14	12,515	12,684	60	Marcellus
32	4-Oct-14	12,316	12,484	60	Marcellus
33	5-Oct-14	12,117	12,285	60	Marcellus
34	5-Oct-14	11,917	12,085	60	Marcellus
35	5-Oct-14	11,718	11,886	60	Marcellus
36	5-Oct-14	11,518	11,686	60	Marcellus
37	6-Oct-14	11,319	11,487	60	Marcellus
38	6-Oct-14	11,119	11,287	60	Marcellus
39	6-Oct-14	10,920	11,088	60	Marcellus
40	6-Oct-14	10,720	10,889	60	Marcellus
41	7-Oct-14	10,521	10,689	60	Marcellus
42	7-Oct-14	10,322	10,490	60	Marcellus
43	7-Oct-14	10,122	10,290	60	Marcellus
44	8-Oct-14	9,923	10,091	60	Marcellus
45	8-Oct-14	9,723	9,891	60	Marcellus
46	8-Oct-14	9,524	9,692	60	Marcellus
47	8-Oct-14	9,324	9,492	60	Marcellus
48	8-Oct-14	9,125	9,293	60	Marcellus
49	9-Oct-14	8,925	9,094	60	Marcellus
50	9-Oct-14	8,726	8,894	60	Marcellus
51	9-Oct-14	8,526	8,695	60	Marcellus
52	10-Oct-14	8,327	8,495	60	Marcellus
53	10-Oct-14	8,128	8,296	60	Marcellus
54	10-Oct-14	7,928	8,096	60	Marcellus
55	10-Oct-14	7,729	7,897	60	Marcellus
56	10-Oct-14	7,529	7,697	60	Marcellus

RECEIVED  
 JUN 23 2015  
 WV GEOLOGICAL SURVEY  
 MORGANTOWN, WV

API 47-085-10082 Farm Name Quimby, Franklin P. Well Number Myrtle Unit 2H

**EXHIBIT 2**

Stage No.	Stimulations Date	Avg Pump Rate	Avg Treatment Pressure (PSI)	Max Breakdown Pressure (PSI)	ISIP (PSI)	Amount of Proppant (lbs)	Amount of Water (bbls)	Amount of Nitrogen/ other (units)
1	15-Aug-14	65.1	7,730	N/A	5,511	218,350	7,091	N/A
2	24-Sep-14	67.0	7,379	5,833	4,545	222,330	8,087	N/A
3	25-Sep-14	64.0	7,082	6,137	4,735	219,330	8,051	N/A
4	25-Sep-14	64.0	7,318	5,600	5,046	251,500	7,321	N/A
5	26-Sep-14	66.0	7,310	5,522	5,296	246,750	7,240	N/A
6	26-Sep-14	65.0	7,317	5,565	4,056	253,160	7,418	N/A
7	27-Sep-14	63.0	7,151	6,073	4,517	169,340	7,129	N/A
8	28-Sep-14	67.0	7,122	6,094	5,003	253,360	7,239	N/A
9	28-Sep-14	66.0	7,165	5,497	4,613	253,090	7,253	N/A
10	28-Sep-14	67.0	7,113	5,525	4,889	253,010	7,282	N/A
11	28-Sep-14	67.0	7,017	5,597	5,250	252,190	7,152	N/A
12	29-Sep-14	68.0	6,768	5,261	5,411	255,240	7,141	N/A
13	29-Sep-14	69.0	6,784	5,629	4,689	178,040	7,808	N/A
14	29-Sep-14	68.0	6,753	5,300	5,361	252,390	7,096	N/A
15	30-Sep-14	66.0	6,894	5,722	5,475	252,840	7,069	N/A
16	30-Sep-14	65.0	6,839	5,643	4,402	253,060	7,076	N/A
17	30-Sep-14	66.0	6,728	5,211	4,499	254,050	7,070	N/A
18	30-Sep-14	67.0	7,099	5,250	5,139	255,200	7,010	N/A
19	1-Oct-14	67.0	7,088	5,243	4,917	254,320	6,996	N/A
20	1-Oct-14	64.0	6,914	5,665	4,681	225,530	7,644	N/A
21	1-Oct-14	66.0	6,646	5,647	4,478	191,150	7,635	N/A
22	1-Oct-14	64.0	6,785	5,708	4,892	255,240	6,930	N/A
23	2-Oct-14	63.0	6,819	5,683	5,207	252,800	6,903	N/A
24	2-Oct-14	67.0	6,834	5,525	5,261	253,240	6,900	N/A
25	2-Oct-14	68.0	6,611	5,103	5,093	253,080	6,882	N/A
26	2-Oct-14	64.0	6,810	5,493	5,132	252,740	6,859	N/A
27	3-Oct-14	65.0	6,729	5,833	5,053	252,760	6,834	N/A
28	3-Oct-14	66.0	6,779	5,568	4,982	252,970	6,804	N/A
29	3-Oct-14	66.0	6,681	5,872	4,860	253,180	6,779	N/A
30	3-Oct-14	64.0	6,482	5,443	5,082	255,230	6,764	N/A
31	4-Oct-14	64.0	6,547	5,558	5,007	227,400	6,872	N/A
32	5-Oct-14	65.0	6,559	5,629	5,028	254,020	6,717	N/A
33	5-Oct-14	67.0	6,683	5,611	4,878	253,640	6,703	N/A
34	5-Oct-14	68.0	6,673	5,719	4,885	253,071	6,677	N/A
35	5-Oct-14	65.0	6,563	5,636	5,254	254,510	6,660	N/A
36	6-Oct-14	64.0	6,469	5,593	5,121	258,060	6,632	N/A
37	6-Oct-14	66.0	6,745	5,933	4,846	251,860	6,629	N/A
38	6-Oct-14	68.0	6,353	6,580	4,857	254,640	6,581	N/A
39	6-Oct-14	65.0	6,509	6,491	4,957	260,500	6,567	N/A
40	6-Oct-14	60.0	5,649	5,697	5,043	187,540	6,856	N/A
41	7-Oct-14	64.0	6,170	6,030	4,846	192,300	6,546	N/A
42	8-Oct-14	61.0	6,529	5,729	5,078	223,340	6,673	N/A
43	8-Oct-14	67.0	6,214	5,221	4,992	249,860	6,484	N/A
44	8-Oct-14	68.0	6,284	5,529	5,196	254,260	6,479	N/A
45	8-Oct-14	68.0	6,616	5,940	4,299	254,900	6,438	N/A
46	8-Oct-14	64.0	6,280	5,751	4,488	253,640	6,412	N/A
47	9-Oct-14	64.0	6,258	5,414	4,996	246,120	6,252	N/A
48	9-Oct-14	66.0	7,530	5,425	5,307	120,380	6,460	N/A
49	9-Oct-14	68.0	6,843	6,026	5,136	256,820	6,351	N/A
50	9-Oct-14	65.0	7,065	5,736	4,302	241,820	6,328	N/A
51	10-Oct-14	65.0	6,136	5,980	5,111	262,300	6,310	N/A
52	10-Oct-14	65.0	6,029	5,357	5,136	249,940	6,302	N/A
53	10-Oct-14	47.0	8,410	6,326	5,275	5,260	5,559	N/A
54	10-Oct-14	69.0	6,605	6,280	4,989	246,600	6,211	N/A
55	10-Oct-14	65.0	6,286	6,680	4,864	264,460	6,228	N/A
56	11-Oct-14	66.0	6,617	6,562	3,415	287,840	6,656	N/A
<b>AVG=</b>		<b>65.3</b>	<b>6,774</b>	<b>5,721</b>	<b>4,918</b>	<b>13,310,551</b>	<b>384,046</b>	<b>TOTAL</b>

JUN 23 2015

WV GEOLOGICAL SURVEY  
MORGANTOWN, WV

JUN 23 2015

RECEIVED

API 47-085-10082 Farm Name Quimby, Franklin P. Well Number Myrtle Unit 2H

## EXHIBIT 3

LITHOLOGY/ FORMATION	TOP DEPTH (TVD)	BOTTOM DEPTH (TVD)	TOP DEPTH (MD)	BOTTOM DEPTH (MD)
	From Surface	From Surface	From Surface	From Surface
Fresh Water	46'	N/A	46'	N/A
Sandstone/ Shale	0	307	0	307
Sandstone/ Shale	est. 307	447	est. 307	447
Siltstone/ Shale	est. 447	567	est. 447	567
Shale/ Limestone	est. 567	587	est. 567	587
Siltstone	est. 587	607	est. 587	607
Shale/ Trace Coal	est. 607	647	est. 607	647
Limestone/ Shale	est. 647	707	est. 647	707
Shale/ Siltstone	est. 707	847	est. 707	847
Shale	est. 847	1127	est. 847	1127
Shale/ Limestone	est. 1127	1187	est. 1127	1187
Shale/Limestone/ Trace Coal	est. 1187	1207	est. 1187	1207
Limestone/ Shale	est. 1207	1287	est. 1207	1287
Shale/ Coal	est. 1287	1327	est. 1287	1327
Shale/ Limestone	est. 1327	1387	est. 1327	1387
Shale/ Trace Coal	est. 1387	1407	est. 1387	1407
Shale	est. 1407	1727	est. 1407	1727
Siltstone/Shale	est. 1727	1787	est. 1727	1787
Siltstone/ Trace Coal	est. 1787	1967	est. 1787	1967
Shale/Trace Coal	est. 1967	2007	est. 1967	2007
Siltstone	est. 2007	2137	est. 2007	2137
Big Lime	2137	2244	2137	2244
Big Injun	2244	2598	2244	2598
Gantz Sand	2598	2820	2598	2820
Fifty Foot Sandstone	2820	2890	2820	2890
Gordon	2890	3049	2890	3051
Fifth Sandstone	3049	3163	3051	3166
Bayard	3163	3611	3166	3628
Warren	3611	4000	3628	4059
Speechley	4000	4266	4059	4401
Baltown	4266	4707	4401	4973
Bradford	4707	5097	4973	5463
Benson	5097	5351	5463	5772
Alexander	5351	5535	5772	5996
Elk	5535	5992	5996	6558
Rhinestreet	5992	6297	6558	6933
Sycamore	6278	6439	6914	7141
Middlesex	6439	6547	7141	7346
Burkett	6547	6577	7346	7418
Tully	6577	6598	7418	7490
Marcellus	6598	NA	7490	NA

\*Please note Antero determines formation tops based on mud logs that are only run on one well on a multi-well pad The measured depth (MD) data on subsequent wells may be slightly different due to the well's unique departure.

**RECEIVED**  
 JUN 23 2015

WV GEOLOGICAL SURVEY  
 MORGANTOWN, WV

**Hydraulic Fracturing Fluid Product Component Information Disclosure**

Job Start Date:	8/15/2014
Job End Date:	10/10/2014
State:	West Virginia
County:	Ritchie
API Number:	47-085-10082-00-00
Operator Name:	Antero Resources Corporation
Well Name and Number:	Myrtle Unit 2H
Longitude:	-80.90281700
Latitude:	39.23055000
Datum:	NAD83
Federal/Tribal Well:	NO
True Vertical Depth:	6,635
Total Base Water Volume (gal):	16,129,932
Total Base Non Water Volume:	682,449



**Hydraulic Fracturing Fluid Composition:**

Trade Name	Supplier	Purpose	Ingredients	Chemical Service Abstract Number (CAS #)	Maximum Ingredient Concentration in Additive (% by mass)**	Maximum Ingredient Concentration in HF Fluid (% by mass)**	Comments
Water	Antero Resources	Base Fluid	Water	7732-18-5	100.00000	90.73429	
Sand	U.S. Well Services, LLC	Proppant	Crystalline Silica, quartz	14808-60-7	100.00000	8.83780	
LGC-15	U.S. Well Services, LLC	Gelling Agents	Guar Gum	9000-30-0	50.00000	0.09299	
			Petroleum Distillates	64742-47-8	60.00000	0.08806	
			Suspending agent (solid)	14808-60-7	3.00000	0.01422	
			Surfactant	68439-51-0	3.00000	0.00558	
WFRA-405	U.S. Well Services, LLC	Friction Reducer	Anionic Polyacrylamide	Proprietary		0.03557	
			Water	7732-18-5	40.00000	0.03557	
			Petroleum Distillates	64742-47-8	22.00000	0.02864	
			Ethoxylated alcohol blend	Proprietary	5.00000	0.00445	
			Crystalline Salt	12125-02-9	5.00000	0.00445	
HCL Acid (12.6%-18.0%)	U.S. Well Services, LLC	Bulk Acid	Water	7732-18-5	87.50000	0.07867	



SI-1000	U.S. Well Services, LLC	Scale Inhibitor	Hydrogen Chloride	7647-01-0	18.00000	0.01879
			Anionic Copolymer	Proprietary		0.00413
			Ethylene Glycol	107-21-1	20.00000	0.00373
			Water	7732-18-5	30.00000	0.00311
K-BAC 1020	U.S. Well Services, LLC	Anti-Bacterial Agent				
			2,2-dibromo-3-nitriopropionamide	10222-01-2	20.00000	0.00445
			Deionized Water	7732-18-5	28.00000	0.00254
AP One	U.S. Well Services, LLC	Gel Breakers				
			Ammonium Persulfate	7727-54-0	100.00000	0.00266
AI-301	U.S. Well Services	Acid Corrosion Inhibitors				
			Diethylene Glycol	111-46-6	30.00000	0.00012
			Methenamine	100-97-0	20.00000	0.00010
			Polyethylene polyamine	58603-67-8	10.00000	0.00004
			Hydrogen Chloride	7647-01-0	10.00000	0.00004
			Coco amine	51791-14-8	5.00000	0.00002
Ingredients shown above are subject to 29 CFR 1910.1200(i) and appear on Material Safety Data Sheets (MSDS). Ingredients shown below are Non-MSDS.						

\* Total Water Volume sources may include fresh water, produced water, and/or recycled water

\*\* Information is based on the maximum potential for concentration and thus the total may be over 100%

Note: For Field Development Products (products that begin with FDP), MSDS level only information has been provided. Ingredient information for chemicals subject to 29 CFR 1910.1200(i) and Appendix D are obtained from suppliers Material Safety Data Sheets (MSDS)

RECEIVED  
 JUN 23 2015  
 WV GEOLOGICAL SURVEY  
 MORGANTOWN, WV

LATITUDE 39°15'00"

7,926'

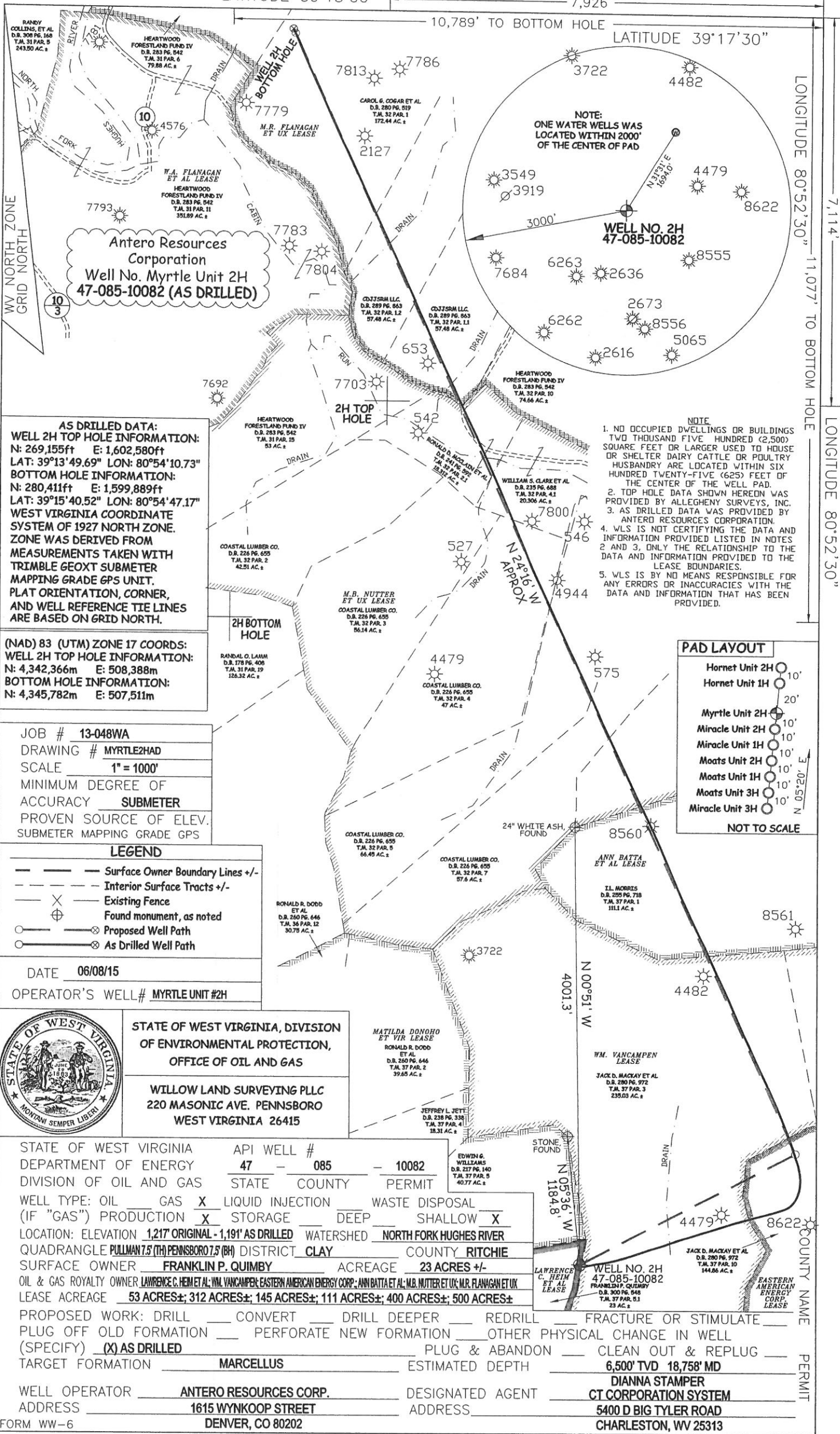
10,789' TO BOTTOM HOLE

LATITUDE 39°17'30"

LONGITUDE 80°52'30" 11,077' TO BOTTOM HOLE

7,114'

LONGITUDE 80°52'30"



**AS DRILLED DATA:**  
**WELL 2H TOP HOLE INFORMATION:**  
 N: 269,155ft E: 1,602,580ft  
 LAT: 39°13'49.69" LON: 80°54'10.73"  
**BOTTOM HOLE INFORMATION:**  
 N: 280,411ft E: 1,599,889ft  
 LAT: 39°15'40.52" LON: 80°54'47.17"  
 WEST VIRGINIA COORDINATE SYSTEM OF 1927 NORTH ZONE. ZONE WAS DERIVED FROM MEASUREMENTS TAKEN WITH TRIMBLE GEOXT SUBMETER MAPPING GRADE GPS UNIT. PLAT ORIENTATION, CORNER, AND WELL REFERENCE TIE LINES ARE BASED ON GRID NORTH.

**(NAD) 83 (UTM) ZONE 17 COORDS:**  
**WELL 2H TOP HOLE INFORMATION:**  
 N: 4,342,366m E: 508,388m  
**BOTTOM HOLE INFORMATION:**  
 N: 4,345,782m E: 507,511m

JOB # 13-048WA  
 DRAWING # MYRTLE2HAD  
 SCALE 1" = 1000'  
 MINIMUM DEGREE OF ACCURACY SUBMETER  
 PROVEN SOURCE OF ELEV. SUBMETER MAPPING GRADE GPS

**LEGEND**  
 - - - Surface Owner Boundary Lines +/-  
 - - - Interior Surface Tracts +/-  
 - - - Existing Fence  
 ⊕ Found monument, as noted  
 ⊙ Proposed Well Path  
 ⊙ As Drilled Well Path

DATE 06/08/15  
 OPERATOR'S WELL# MYRTLE UNIT #2H



STATE OF WEST VIRGINIA, DIVISION OF ENVIRONMENTAL PROTECTION, OFFICE OF OIL AND GAS  
 WILLOW LAND SURVEYING PLLC  
 220 MASONIC AVE. PENNSBORO WEST VIRGINIA 26415

MATILDA DONOHO ET VIR LEASE  
 RONALD R. DODD ET AL  
 D.B. 260 PG. 646 T.M. 37 PAR. 2 39.65 AC.±  
 JEFFREY L. JETT  
 D.B. 238 PG. 338 T.M. 37 PAR. 4 18.31 AC.±  
 EDWIN G. WILLIAMS  
 D.B. 217 PG. 140 T.M. 37 PAR. 9 40.77 AC.±  
 W.M. VANCAMPEN LEASE  
 JACK D. MACKAY ET AL  
 D.B. 280 PG. 972 T.M. 37 PAR. 3 239.03 AC.±  
 LAWRENCE C. HEIN ET AL LEASE  
 FRANKLIN P. QUIMBY  
 D.B. 300 PG. 848 T.M. 37 PAR. 5 23 AC.±  
 JACK D. MACKAY ET AL  
 D.B. 280 PG. 972 T.M. 37 PAR. 10 144.86 AC.±  
 EASTERN AMERICAN ENERGY CORP. LEASE

STATE OF WEST VIRGINIA DEPARTMENT OF ENERGY DIVISION OF OIL AND GAS

API WELL #	47 - 085 - 10082
STATE COUNTY PERMIT	

WELL TYPE: OIL  GAS  LIQUID INJECTION  WASTE DISPOSAL   
 (IF "GAS") PRODUCTION  STORAGE  DEEP  SHALLOW   
 LOCATION: ELEVATION 1,217' ORIGINAL - 1,191' AS DRILLED WATERSHED NORTH FORK HUGHES RIVER  
 QUADRANGLE PULLMAN 7.5 (TH) PENNSBORO 7.5 (BH) DISTRICT CLAY COUNTY RITCHIE  
 SURFACE OWNER FRANKLIN P. QUIMBY ACREAGE 23 ACRES +/-  
 OIL & GAS ROYALTY OWNER LAWRENCE C. HEIN ET AL; W.M. VANCAMPEN; EASTERN AMERICAN ENERGY CORP.; ANN BATTA ET AL; M.B. NUTTER ET UX; M.R. FLANAGAN ET UX  
 LEASE ACREAGE 53 ACRES±; 312 ACRES±; 145 ACRES±; 111 ACRES±; 400 ACRES±; 500 ACRES±  
 PROPOSED WORK: DRILL  CONVERT  DRILL DEEPER  REDRILL  FRACTURE OR STIMULATE   
 PLUG OFF OLD FORMATION  PERFORATE NEW FORMATION  OTHER PHYSICAL CHANGE IN WELL (SPECIFY)  AS DRILLED  PLUG & ABANDON  CLEAN OUT & REPLUG   
 TARGET FORMATION MARCELLUS ESTIMATED DEPTH 6,500' TVD 18,758' MD  
 WELL OPERATOR ANTERO RESOURCES CORP. DESIGNATED AGENT DIANNA STAMPER  
 ADDRESS 1615 WYNKOOP STREET ADDRESS 5400 D BIG TYLER ROAD  
 DENVER, CO 80202 CHARLESTON, WV 25313

- NOTE**
1. NO OCCUPIED DWELLINGS OR BUILDINGS TWO THOUSAND FIVE HUNDRED (2,500) SQUARE FEET OR LARGER USED TO HOUSE OR SHELTER DAIRY CATTLE OR POULTRY HUSBANDRY ARE LOCATED WITHIN SIX HUNDRED TWENTY-FIVE (625) FEET OF THE CENTER OF THE WELL PAD.
  2. TOP HOLE DATA SHOWN HEREON WAS PROVIDED BY ALLEGHENY SURVEYS, INC.
  3. AS DRILLED DATA WAS PROVIDED BY ANTERO RESOURCES CORPORATION.
  4. WLS IS NOT CERTIFYING THE DATA AND INFORMATION PROVIDED LISTED IN NOTES 2 AND 3, ONLY THE RELATIONSHIP TO THE DATA AND INFORMATION PROVIDED TO THE LEASE BOUNDARIES.
  5. WLS IS BY NO MEANS RESPONSIBLE FOR ANY ERRORS OR INACCURACIES WITH THE DATA AND INFORMATION THAT HAS BEEN PROVIDED.

