

JUN 23 2015

WV GEOLOGICAL SURVEY
MORGANTOWN, WV



Myrtle Unit 2H
Ritchie County WV
Northing: 14245865.61
Easting: 1667890.07
As Drilled



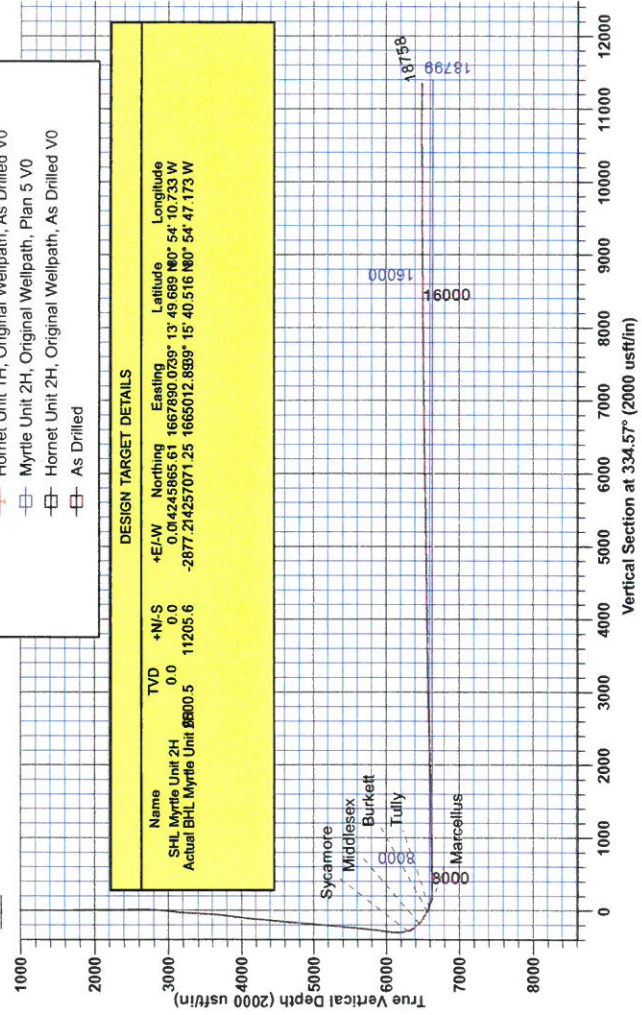
WELL DETAILS Myrtle Unit 2H			
+N/-S	+E/-W	Northing	Longitude
0.0	0.0	14245865.61	107.733 W
Ground Level:	Easting	Latitude	
	1667890.07	39° 13' 49.689 N	80° 54' 10.733 W

Precision 525: Myrtle 2H 1191.GL +19' RKB @ 1210.0usft
Gr. 1191.0

DESIGN TARGET DETAILS			
Name	TVD	+N/-S	+E/-W
SHL Myrtle Unit 2H	0.0	0.0	0.0
Actual BHL Myrtle Unit 8800.5	11205.6	11205.6	-2877.214257071.25
			1665012.8899° 15' 40.516 N0° 54' 47.173 W

LEGEND

- +— Hornet Unit 1H, Original Wellpath, As Drilled V0
- Myrtle Unit 2H, Original Wellpath, Plan 5 V0
- Hornet Unit 2H, Original Wellpath, As Drilled V0
- As Drilled



Azimuths to Grid North
True North: 0.06°
Magnetic North: -8.43°
Magnetic Field
Strength: 52306 AeqT
Dir. Angle: 66.80°
Date: 3/21/2014
Model: IGRF2010

To convert Magnetic North to Grid, Subtract 8.43°
To convert True North to Grid, Subtract 0.06°

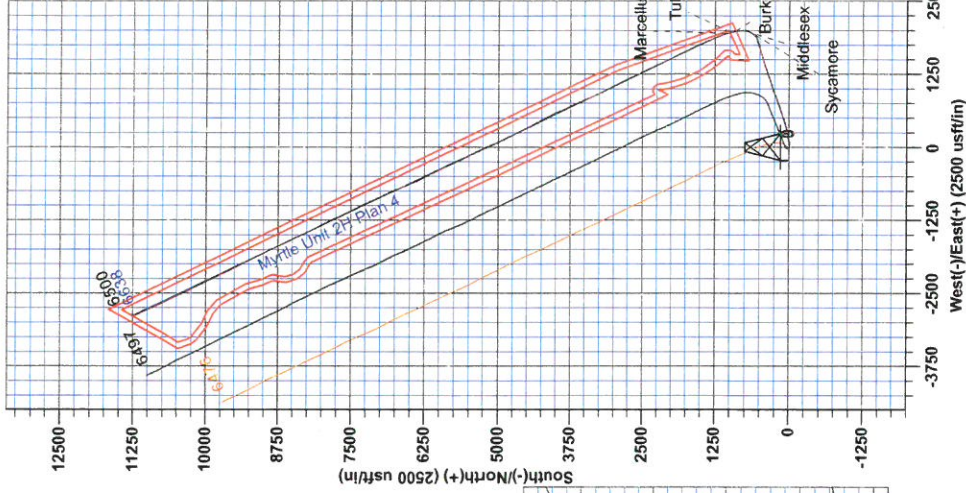
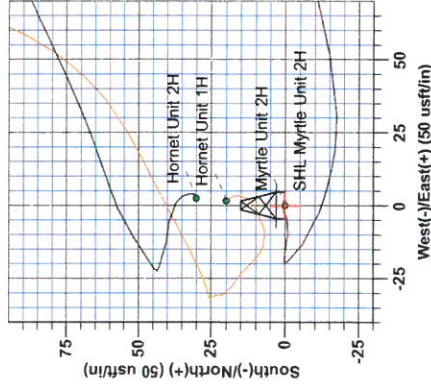


PROJECT DETAILS Ritchie County WV
Geodetic System: Universal Transverse Mercator (US Survey Feet)
Map: 827 (NAD83 CONUS)
Ellipsoid: Clarke 1866
Zone: Zone 17N (84 W to 78 W)
System Datum: Mean Sea Level

Genie Lightfoot
14/46, June 26 2014
Scientific Drilling
421 South Eagle Lane
Oklahoma City, OK 73128

SITE DETAILS: Hornet/Myrtle Pad

Site Center: Hornet Unit 1H
Site Centre Northing: 14245885.63
Easting: 1667891.74
Positional Uncertainty: 0.0
Convergence: 0.06
Local North: Grid





RECEIVED

JUN 23 2015

WV GEOLOGICAL SURVEY
MORGANTOWN, WV

Antero Resources

Ritchie County WV
Hornet/Myrtle Pad
Myrtle Unit 2H
Original Wellpath

Design: As Drilled

EOW Completion Report

26 June, 2014





Company:	Antero Resources	Local Co-ordinate Reference:	Well Myrtle Unit 2H
Project:	Ritchie County WV	TVD Reference:	Precision 525: Myrtle 2H 1191 GL + 19' RKB @ 1
Site:	Hornet/Myrtle Pad	MD Reference:	Precision 525: Myrtle 2H 1191 GL + 19' RKB @ 1
Well:	Myrtle Unit 2H	North Reference:	Grid
Wellbore:	Original Wellpath	Survey Calculation Method:	Minimum Curvature
Design:	As Drilled	Database:	Oklahoma District

Project	Ritchie County WV, Ritchie County WV, WV North		
Map System:	Universal Transverse Mercator (US Survey Fee	System Datum:	Mean Sea Level
Geo Datum:	NAD 1927 (NADCON CONUS)		
Map Zone:	Zone 17N (84 W to 78 W)		

Site	Hornet/Myrtle Pad				
Site Position:		Northing:	14,245,885.63 usft	Latitude:	39° 13' 49.887 N
From:	Map	Easting:	1,667,891.74 usft	Longitude:	80° 54' 10.711 W
Position Uncertainty:	0.0 usft	Slot Radius:	13-3/16"	Grid Convergence:	0.06 °

Well	Myrtle Unit 2H, Marcellus					
Well Position	+N/-S	0.0 usft	Northing:	14,245,865.61 usft	Latitude:	39° 13' 49.689 N
	+E/-W	0.0 usft	Easting:	1,667,890.07 usft	Longitude:	80° 54' 10.733 W
Position Uncertainty	2.0 usft		Wellhead Elevation:	1,210.0 usft	Ground Level:	1,191.0 usft

Wellbore	Original Wellpath
-----------------	-------------------

Magnetics	Model Name	Sample Date	Declination (°)	Dip Angle (°)	Field Strength (nT)
	IGRF2010	3/21/2014	-8.37	66.80	52,306

Design	As Drilled
---------------	------------

Audit Notes:					
Version:	1.0	Phase:	ACTUAL	Tie On Depth:	0.0
Vertical Section:	Depth From (TVD) (usft)	+N/-S (usft)	+E/-W (usft)	Direction (°)	
	0.0	0.0	0.0	334.57	

Survey Program	Date 6/26/2014				
From (usft)	To (usft)	Survey (Wellbore)	Tool Name	Description	
106.0	5,486.9	Survey #4 Def Gyro to KOP (Original Well	SDI Standard Keeper	Scientific Drilling Intl. Standard Wireline Keeper	
5,517.0	18,758.0	Survey #5 SDI MWD (Original Wellpath)	SDI MWD	Scientific Drilling Intl. MWD - Standard ver 1.0.1	

MD (usft)	Inc (°)	Azi (azimuth) (°)	TVD (usft)	N/S (usft)	E/W (usft)	V. Sec (usft)	DLeg (°/100usft)
0.0	0.00	0.00	0.0	0.0	0.0	0.0	0.00
106.0	0.64	300.95	106.0	0.3	-0.5	0.5	0.60
206.0	0.65	264.03	206.0	0.5	-1.6	1.1	0.41
306.0	0.25	255.74	306.0	0.4	-2.3	1.4	0.40
406.0	0.27	224.95	406.0	0.2	-2.7	1.3	0.14
506.0	0.39	242.86	506.0	-0.1	-3.2	1.3	0.16
606.0	0.44	247.55	606.0	-0.4	-3.8	1.3	0.06
706.0	0.47	273.59	706.0	-0.5	-4.6	1.5	0.21
806.0	0.34	250.55	806.0	-0.6	-5.3	1.7	0.21
906.0	0.55	262.48	906.0	-0.8	-6.0	1.9	0.23
1,006.0	0.34	278.24	1,006.0	-0.8	-6.8	2.2	0.24

JUN 23 2015



EOW Completion Report



Company:	Antero Resources	Local Co-ordinate Reference:	Well Myrtle Unit 2H
Project:	Ritchie County WV	TVD Reference:	Precision 525: Myrtle 2H 1191 GL + 19' RKB @ 1
Site:	Hornet/Myrtle Pad	MD Reference:	Precision 525: Myrtle 2H 1191 GL + 19' RKB @ 1
Well:	Myrtle Unit 2H	North Reference:	Grid
Wellbore:	Original Wellpath	Survey Calculation Method:	Minimum Curvature
Design:	As Drilled	Database:	Oklahoma District

Survey

MD (usft)	Inc (°)	Azi (azimuth) (°)	TVD (usft)	N/S (usft)	E/W (usft)	V. Sec (usft)	DLeg (°/100usft)
1,106.0	0.36	266.76	1,106.0	-0.8	-7.4	2.5	0.07
1,206.0	0.36	261.42	1,206.0	-0.8	-8.0	2.7	0.03
1,306.0	0.45	253.74	1,306.0	-1.0	-8.7	2.8	0.10
1,406.0	0.54	270.07	1,406.0	-1.1	-9.6	3.1	0.17
1,506.0	0.58	283.06	1,506.0	-1.0	-10.5	3.6	0.13
1,606.0	0.49	296.12	1,606.0	-0.7	-11.4	4.3	0.15
1,706.0	0.44	268.77	1,705.9	-0.5	-12.2	4.8	0.23
1,806.0	0.56	280.23	1,805.9	-0.4	-13.1	5.2	0.16
1,906.0	0.48	272.38	1,905.9	-0.3	-14.0	5.7	0.11
2,006.0	0.51	274.57	2,005.9	-0.3	-14.8	6.1	0.04
2,106.0	0.45	287.03	2,105.9	-0.1	-15.6	6.6	0.12
2,206.0	0.35	269.70	2,205.9	0.0	-16.3	7.0	0.16
2,306.0	0.52	270.88	2,305.9	0.0	-17.1	7.3	0.17
2,406.0	0.53	279.70	2,405.9	0.1	-18.0	7.8	0.08
2,506.0	0.38	280.15	2,505.9	0.2	-18.8	8.3	0.15
2,606.0	0.35	257.99	2,605.9	0.2	-19.4	8.5	0.14
2,706.0	0.28	292.14	2,705.9	0.2	-19.9	8.8	0.20
2,806.0	2.45	141.43	2,805.9	-1.3	-18.8	6.9	2.70
2,906.0	5.76	125.82	2,905.6	-5.9	-13.4	0.4	3.46
3,006.0	8.48	110.68	3,004.9	-11.5	-2.4	-9.3	3.28
3,106.0	10.10	101.43	3,103.5	-15.8	13.1	-19.9	2.20
3,206.0	11.34	88.44	3,201.8	-17.3	31.5	-29.1	2.71
3,306.0	11.94	78.63	3,299.8	-15.0	51.5	-35.6	2.07
3,406.0	13.26	76.85	3,397.4	-10.3	72.8	-40.6	1.38
3,506.0	14.74	76.66	3,494.4	-4.8	96.3	-45.7	1.48
3,606.0	16.87	76.97	3,590.6	1.4	122.8	-51.5	2.13
3,706.0	19.60	79.79	3,685.6	7.7	153.5	-59.0	2.87
3,806.0	23.15	80.85	3,778.7	13.8	189.4	-68.9	3.57
3,906.0	27.17	78.49	3,869.2	21.4	231.2	-79.9	4.14
4,006.0	31.79	76.53	3,956.2	32.1	279.2	-90.9	4.72
4,106.0	36.08	74.92	4,039.1	45.9	333.3	-101.6	4.38
4,206.0	39.56	72.42	4,118.1	63.2	392.1	-111.3	3.80
4,306.0	41.20	70.93	4,194.3	83.6	453.6	-119.3	1.90
4,406.0	40.93	69.43	4,269.7	105.9	515.4	-125.7	1.02
4,506.0	41.10	69.98	4,345.2	128.6	576.9	-131.6	0.40
4,606.0	40.61	71.90	4,420.8	150.0	638.8	-138.8	1.35
4,706.0	40.44	72.47	4,496.8	169.9	700.6	-147.4	0.41
4,806.0	37.47	70.06	4,574.6	190.0	760.2	-154.8	3.33
4,906.0	37.36	68.57	4,654.0	211.5	817.0	-159.8	0.91
5,006.0	38.80	69.43	4,732.7	233.6	874.6	-164.6	1.53
5,106.0	37.73	72.84	4,811.2	253.6	933.2	-171.7	2.37
5,206.0	37.40	73.23	4,890.5	271.4	991.5	-180.6	0.41
5,306.0	36.94	69.82	4,970.2	290.5	1,048.8	-188.0	2.11
5,406.0	35.97	70.31	5,050.6	310.8	1,104.6	-193.6	1.01

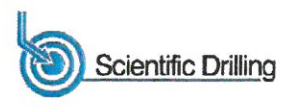
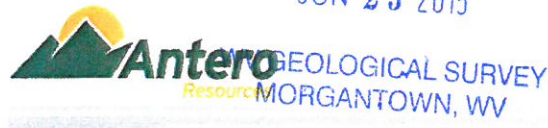


Company: Antero Resources
Project: Ritchie County WV
Site: Hornet/Myrtle Pad
Well: Myrtle Unit 2H
Wellbore: Original Wellpath
Design: As Drilled

Local Co-ordinate Reference: Well Myrtle Unit 2H
TVD Reference: Precision 525: Myrtle 2H 1191 GL + 19' RKB @ 1
MD Reference: Precision 525: Myrtle 2H 1191 GL + 19' RKB @ 1
North Reference: Grid
Survey Calculation Method: Minimum Curvature
Database: Oklahoma District

Survey

MD (usft)	Inc (°)	Azi (azimuth) (°)	TVD (usft)	N/S (usft)	E/W (usft)	V. Sec (usft)	DLeg (°/100usft)
5,486.9	35.34	72.99	5,116.3	325.6	1,149.3	-199.4	2.08
5,517.0	35.15	71.11	5,140.9	331.0	1,165.9	-201.7	3.65
5,562.0	34.91	71.04	5,177.8	339.4	1,190.3	-204.6	0.54
5,606.0	34.73	70.76	5,213.9	347.6	1,214.1	-207.4	0.55
5,651.0	34.12	71.43	5,251.0	355.8	1,238.1	-210.3	1.60
5,741.0	33.82	71.47	5,325.7	371.8	1,285.8	-216.3	0.33
5,831.0	34.73	70.29	5,400.0	388.5	1,333.7	-221.9	1.25
5,921.0	35.33	71.67	5,473.7	405.3	1,382.5	-227.7	1.10
6,010.0	35.21	73.25	5,546.4	420.8	1,431.5	-234.7	1.03
6,100.0	34.93	73.98	5,620.1	435.4	1,481.1	-242.8	0.56
6,190.0	34.82	73.75	5,693.9	449.7	1,530.6	-251.1	0.19
6,280.0	35.36	73.89	5,767.6	464.1	1,580.3	-259.5	0.61
6,369.0	35.83	74.22	5,839.9	478.3	1,630.1	-268.0	0.57
6,459.0	36.69	73.80	5,912.5	493.0	1,681.2	-276.7	0.99
6,549.0	35.84	73.56	5,985.1	507.9	1,732.3	-285.2	0.96
6,638.0	36.14	72.36	6,057.1	523.3	1,782.3	-292.8	0.86
6,728.0	34.45	70.52	6,130.5	539.8	1,831.6	-299.0	2.22
6,773.0	33.92	69.26	6,167.8	548.5	1,855.4	-301.4	1.97
6,818.0	34.59	62.12	6,205.0	558.9	1,878.4	-301.8	9.05
6,863.0	36.06	53.03	6,241.7	572.9	1,900.3	-298.7	12.12
6,907.0	37.75	44.65	6,276.9	590.2	1,920.1	-291.5	12.06
6,933.0	38.74	40.03	6,297.3	602.1	1,930.9	-285.4	11.64
Sycamore							
6,952.0	39.58	36.79	6,312.1	611.5	1,938.4	-280.1	11.64
6,997.0	41.51	29.50	6,346.3	636.0	1,954.3	-264.8	11.36
7,042.0	43.86	23.01	6,379.4	663.4	1,967.8	-245.9	11.08
7,087.0	47.16	17.78	6,410.9	693.4	1,978.9	-223.5	11.06
7,132.0	51.25	12.69	6,440.3	726.3	1,987.8	-197.7	12.48
7,160.0	52.51	9.58	6,457.6	747.9	1,992.1	-180.0	9.83
Middlesex							
7,177.0	53.32	7.75	6,467.9	761.3	1,994.1	-168.7	9.83
7,222.0	55.28	2.20	6,494.1	797.7	1,997.3	-137.2	10.92
7,267.0	57.61	356.36	6,519.0	835.2	1,996.8	-103.2	11.99
7,311.0	60.96	351.40	6,541.5	872.7	1,992.7	-67.5	12.32
7,356.0	62.89	347.50	6,562.7	911.8	1,985.4	-29.1	8.77
7,365.0	63.40	346.87	6,566.7	919.6	1,983.6	-21.3	8.43
Burkett							
7,401.0	65.46	344.40	6,582.3	951.0	1,975.6	10.6	8.43
7,437.0	68.93	342.32	6,596.2	982.8	1,966.1	43.4	11.01
Tully							
7,446.0	69.80	341.81	6,599.4	990.8	1,963.5	51.7	11.01
7,491.0	75.26	339.51	6,612.9	1,031.3	1,949.3	94.4	13.08
7,509.0	76.96	339.62	6,617.2	1,047.7	1,943.2	111.8	9.44
Marcellus							
7,536.0	79.50	339.79	6,622.7	1,072.5	1,934.0	138.1	9.44



Company:	Antero Resources	Local Co-ordinate Reference:	Well Myrtle Unit 2H
Project:	Ritchie County WV	TVD Reference:	Precision 525: Myrtle 2H 1191 GL + 19' RKB @ 1
Site:	Hornet/Myrtle Pad	MD Reference:	Precision 525: Myrtle 2H 1191 GL + 19' RKB @ 1
Well:	Myrtle Unit 2H	North Reference:	Grid
Wellbore:	Original Wellpath	Survey Calculation Method:	Minimum Curvature
Design:	As Drilled	Database:	Oklahoma District

MD (usft)	Inc (°)	Azi (azimuth) (°)	TVD (usft)	N/S (usft)	E/W (usft)	V. Sec (usft)	DLeg (°/100usft)
7,580.0	82.73	340.47	6,629.5	1,113.4	1,919.2	181.4	7.50
7,625.0	86.70	340.36	6,633.7	1,155.6	1,904.2	225.9	8.83
7,652.0	89.34	339.18	6,634.6	1,180.9	1,894.9	252.8	10.71
7,696.0	90.75	337.95	6,634.6	1,221.8	1,878.8	296.7	4.25
7,786.0	90.84	337.60	6,633.3	1,305.1	1,844.8	386.5	0.40
7,876.0	90.31	336.10	6,632.4	1,387.9	1,809.4	476.5	1.77
7,966.0	90.40	335.49	6,631.9	1,470.0	1,772.5	566.4	0.69
8,055.0	90.13	334.78	6,631.5	1,550.7	1,735.1	655.4	0.85
8,145.0	91.36	334.43	6,630.3	1,632.0	1,696.5	745.4	1.42
8,235.0	91.01	334.26	6,628.4	1,713.1	1,657.5	835.4	0.43
8,324.0	90.84	333.20	6,627.0	1,792.9	1,618.1	924.4	1.21
8,414.0	91.71	334.34	6,625.0	1,873.6	1,578.3	1,014.3	1.59
8,504.0	90.84	335.14	6,623.0	1,955.0	1,540.0	1,104.3	1.31
8,594.0	90.92	334.70	6,621.6	2,036.5	1,501.8	1,194.3	0.50
8,683.0	91.10	333.64	6,620.0	2,116.6	1,463.0	1,283.3	1.21
8,773.0	90.31	334.70	6,618.9	2,197.6	1,423.8	1,373.3	1.47
8,863.0	91.36	336.01	6,617.6	2,279.4	1,386.3	1,463.3	1.87
8,952.0	91.63	336.45	6,615.3	2,360.8	1,350.4	1,552.2	0.58
9,042.0	90.13	334.52	6,613.9	2,442.7	1,313.1	1,642.2	2.72
9,132.0	90.31	334.17	6,613.6	2,523.8	1,274.1	1,732.2	0.44
9,222.0	90.13	333.64	6,613.2	2,604.6	1,234.6	1,822.2	0.62
9,311.0	91.71	333.55	6,611.8	2,684.3	1,195.0	1,911.1	1.78
9,401.0	92.07	335.22	6,608.8	2,765.5	1,156.1	2,001.1	1.90
9,491.0	91.98	335.66	6,605.6	2,847.3	1,118.7	2,091.0	0.50
9,580.0	91.10	333.64	6,603.2	2,927.7	1,080.6	2,180.0	2.47
9,670.0	91.10	332.50	6,601.5	3,007.9	1,039.9	2,269.9	1.27
9,760.0	91.01	333.55	6,599.9	3,088.1	999.1	2,359.9	1.17
9,850.0	91.71	334.61	6,597.7	3,169.0	959.7	2,449.8	1.41
9,939.0	91.89	333.82	6,594.9	3,249.1	921.0	2,538.8	0.91
10,029.0	91.89	335.31	6,592.0	3,330.3	882.4	2,628.7	1.65
10,119.0	92.15	334.87	6,588.8	3,411.9	844.5	2,718.7	0.57
10,208.0	91.63	336.19	6,585.9	3,492.9	807.7	2,807.6	1.59
10,298.0	91.80	336.63	6,583.2	3,575.3	771.7	2,897.5	0.52
10,388.0	90.84	335.75	6,581.1	3,657.6	735.3	2,987.5	1.45
10,477.0	90.22	336.01	6,580.3	3,738.8	699.0	3,076.4	0.76
10,567.0	91.19	335.31	6,579.2	3,820.8	661.9	3,166.4	1.33
10,657.0	90.57	335.22	6,577.8	3,902.6	624.2	3,256.4	0.70
10,747.0	91.10	333.82	6,576.5	3,983.8	585.5	3,346.4	1.66
10,836.0	90.92	333.20	6,574.9	4,063.4	545.8	3,435.4	0.73
10,926.0	90.92	332.59	6,573.5	4,143.6	504.8	3,525.3	0.68
11,016.0	90.40	332.24	6,572.4	4,223.3	463.2	3,615.2	0.70
11,106.0	90.22	333.90	6,571.9	4,303.6	422.4	3,705.2	1.86
11,195.0	90.22	334.43	6,571.6	4,383.7	383.6	3,794.2	0.60
11,285.0	89.78	333.90	6,571.6	4,464.7	344.4	3,884.2	0.77
11,375.0	90.57	334.08	6,571.3	4,545.5	304.9	3,974.2	0.90

JUN 23 2015



GEOLOGICAL SURVEY
MORGANTOWN, WV

EOW Completion Report



Company: Antero Resources
Project: Ritchie County WV
Site: Hornet/Myrtle Pad
Well: Myrtle Unit 2H
Wellbore: Original Wellpath
Design: As Drilled

Local Co-ordinate Reference: Well Myrtle Unit 2H
TVD Reference: Precision 525: Myrtle 2H 1191 GL + 19' RKB @ 1
MD Reference: Precision 525: Myrtle 2H 1191 GL + 19' RKB @ 1
North Reference: Grid
Survey Calculation Method: Minimum Curvature
Database: Oklahoma District

Survey

MD (usft)	Inc (°)	Azi (azimuth) (°)	TVD (usft)	N/S (usft)	E/W (usft)	V. Sec (usft)	DLeg (°/100usft)
11,465.0	91.28	333.47	6,569.9	4,626.3	265.2	4,064.2	1.04
11,554.0	91.80	333.47	6,567.5	4,705.9	225.4	4,153.1	0.58
11,644.0	90.84	333.90	6,565.4	4,786.5	185.5	4,243.1	1.17
11,734.0	90.40	333.55	6,564.4	4,867.2	145.7	4,333.1	0.62
11,824.0	90.84	335.66	6,563.4	4,948.5	107.1	4,423.1	2.39
11,913.0	91.04	335.29	6,562.0	5,029.5	70.2	4,512.0	0.47
12,003.0	90.66	335.57	6,560.6	5,111.3	32.7	4,602.0	0.52
12,093.0	90.66	335.14	6,559.6	5,193.1	-4.8	4,692.0	0.48
12,182.0	91.01	334.52	6,558.3	5,273.6	-42.6	4,781.0	0.80
12,272.0	90.57	333.55	6,557.1	5,354.6	-82.0	4,871.0	1.18
12,362.0	91.01	334.61	6,555.8	5,435.5	-121.4	4,961.0	1.28
12,452.0	91.19	333.99	6,554.1	5,516.6	-160.4	5,050.9	0.72
12,541.0	90.57	333.47	6,552.7	5,596.4	-199.8	5,139.9	0.91
12,631.0	90.66	334.43	6,551.8	5,677.2	-239.3	5,229.9	1.07
12,721.0	90.84	334.87	6,550.6	5,758.5	-277.8	5,319.9	0.53
12,810.0	89.78	333.38	6,550.1	5,838.6	-316.7	5,408.9	2.05
12,900.0	91.01	334.34	6,549.5	5,919.4	-356.3	5,498.9	1.73
12,990.0	91.36	334.26	6,547.6	6,000.5	-395.3	5,588.9	0.40
13,080.0	90.31	332.59	6,546.3	6,081.0	-435.6	5,678.8	2.19
13,169.0	91.71	333.73	6,544.8	6,160.4	-475.8	5,767.8	2.03
13,259.0	91.80	334.08	6,542.0	6,241.2	-515.3	5,857.7	0.40
13,348.0	92.15	333.99	6,538.9	6,321.1	-554.3	5,946.7	0.41
13,438.0	90.92	336.01	6,536.5	6,402.7	-592.3	6,036.6	2.63
13,528.0	91.54	336.81	6,534.6	6,485.1	-628.3	6,126.6	1.12
13,618.0	90.22	336.37	6,533.2	6,567.7	-664.1	6,216.5	1.55
13,707.0	89.69	336.10	6,533.3	6,649.1	-699.9	6,305.5	0.67
13,797.0	90.84	336.45	6,532.9	6,731.5	-736.1	6,395.4	1.34
13,887.0	91.01	336.37	6,531.4	6,814.0	-772.1	6,485.4	0.21
13,976.0	90.75	336.37	6,530.0	6,895.5	-807.8	6,574.3	0.29
14,066.0	90.31	335.84	6,529.2	6,977.8	-844.3	6,664.3	0.77
14,156.0	89.78	335.40	6,529.1	7,059.8	-881.4	6,754.3	0.77
14,245.0	89.96	335.31	6,529.3	7,140.7	-918.5	6,843.2	0.23
14,334.0	91.80	336.10	6,528.0	7,221.8	-955.1	6,932.2	2.25
14,424.0	90.57	334.26	6,526.1	7,303.5	-992.9	7,022.2	2.46
14,514.0	90.92	334.26	6,524.9	7,384.5	-1,032.0	7,112.2	0.39
14,603.0	91.36	334.96	6,523.2	7,464.9	-1,070.1	7,201.2	0.93
14,693.0	91.01	333.47	6,521.3	7,545.9	-1,109.3	7,291.1	1.70
14,787.0	90.92	333.55	6,519.7	7,630.0	-1,151.2	7,385.1	0.13
14,882.0	90.75	333.47	6,518.3	7,715.1	-1,193.6	7,480.1	0.20
14,976.0	91.10	333.64	6,516.8	7,799.2	-1,235.4	7,574.1	0.41
15,070.0	89.69	333.64	6,516.2	7,883.4	-1,277.2	7,668.0	1.50
15,164.0	90.57	334.52	6,516.0	7,968.0	-1,318.3	7,762.0	1.32
15,258.0	91.01	334.08	6,514.7	8,052.7	-1,359.0	7,856.0	0.66
15,353.0	90.80	333.99	6,513.2	8,138.1	-1,400.6	7,951.0	0.24

JUN 23 2015



EOW Completion Report



Company: Antero Resources
Project: Ritchie County WV
Site: Hornet/Myrtle Pad
Well: Myrtle Unit 2H
Wellbore: Original Wellpath
Design: As Drilled

Local Co-ordinate Reference: Well Myrtle Unit 2H
TVD Reference: Precision 525: Myrtle 2H 1191 GL + 19' RKB @ 1
MD Reference: Precision 525: Myrtle 2H 1191 GL + 19' RKB @ 1
North Reference: Grid
Survey Calculation Method: Minimum Curvature
Database: Oklahoma District

Survey

MD (usft)	Inc (°)	Azi (azimuth) (°)	TVD (usft)	N/S (usft)	E/W (usft)	V. Sec (usft)	DLeg (°/100usft)
15,447.0	91.36	333.99	6,511.4	8,222.5	-1,441.8	8,045.0	0.60
15,542.0	90.04	333.82	6,510.2	8,307.8	-1,483.6	8,140.0	1.40
15,637.0	89.78	333.90	6,510.4	8,393.1	-1,525.5	8,235.0	0.29
15,731.0	89.78	334.78	6,510.7	8,477.8	-1,566.2	8,329.0	0.94
15,825.0	89.25	334.70	6,511.5	8,562.9	-1,606.3	8,423.0	0.57
15,915.0	89.60	334.17	6,512.4	8,644.0	-1,645.1	8,512.9	0.71
16,004.0	91.10	335.66	6,511.9	8,724.6	-1,682.8	8,601.9	2.38
16,094.0	90.75	334.43	6,510.4	8,806.2	-1,720.8	8,691.9	1.42
16,184.0	89.78	334.70	6,510.0	8,887.5	-1,759.5	8,781.9	1.12
16,273.0	90.13	334.52	6,510.1	8,967.9	-1,797.6	8,870.9	0.44
16,363.0	91.01	335.14	6,509.2	9,049.4	-1,835.9	8,960.9	1.20
16,453.0	89.52	333.90	6,508.8	9,130.6	-1,874.6	9,050.9	2.15
16,543.0	90.13	334.26	6,509.1	9,211.5	-1,913.9	9,140.9	0.79
16,632.0	90.40	333.73	6,508.6	9,291.5	-1,953.0	9,229.9	0.67
16,722.0	90.84	333.73	6,507.7	9,372.2	-1,992.8	9,319.9	0.49
16,812.0	90.92	333.82	6,506.3	9,453.0	-2,032.6	9,409.9	0.13
16,902.0	90.48	333.29	6,505.2	9,533.5	-2,072.6	9,499.8	0.77
16,992.0	90.75	333.20	6,504.2	9,613.9	-2,113.2	9,589.8	0.32
17,081.0	89.78	334.17	6,503.8	9,693.7	-2,152.6	9,678.8	1.54
17,171.0	89.60	333.82	6,504.3	9,774.6	-2,192.1	9,768.8	0.44
17,261.0	89.96	334.34	6,504.6	9,855.5	-2,231.4	9,858.8	0.70
17,350.0	90.57	333.47	6,504.2	9,935.4	-2,270.6	9,947.8	1.19
17,440.0	90.75	333.73	6,503.2	10,016.0	-2,310.6	10,037.8	0.35
17,530.0	90.92	333.82	6,501.9	10,096.8	-2,350.3	10,127.7	0.21
17,620.0	91.19	332.59	6,500.2	10,177.1	-2,390.9	10,217.7	1.40
17,709.0	91.28	334.34	6,498.3	10,256.7	-2,430.6	10,306.7	1.97
17,799.0	91.19	333.73	6,496.4	10,337.6	-2,470.0	10,396.6	0.68
17,889.0	90.04	334.70	6,495.4	10,418.6	-2,509.2	10,486.6	1.67
17,978.0	90.31	334.43	6,495.1	10,499.0	-2,547.4	10,575.6	0.43
18,068.0	90.66	335.57	6,494.4	10,580.5	-2,585.4	10,665.6	1.32
18,158.0	90.75	334.70	6,493.3	10,662.2	-2,623.3	10,755.6	0.97
18,248.0	89.52	332.59	6,493.1	10,742.8	-2,663.2	10,845.6	2.71
18,338.0	88.55	334.70	6,494.6	10,823.5	-2,703.2	10,935.6	2.58
18,427.0	88.55	335.40	6,496.8	10,904.1	-2,740.7	11,024.5	0.79
18,517.0	88.90	335.75	6,498.8	10,986.1	-2,777.9	11,114.5	0.55
18,607.0	88.99	335.75	6,500.5	11,068.1	-2,814.9	11,204.5	0.10
18,699.0	90.44	335.58	6,500.9	11,151.9	-2,852.8	11,296.4	1.59
18,758.0	90.44	335.58	6,500.5	11,205.6	-2,877.2	11,355.4	0.00

JUN 23 2015



WV GEOLOGICAL SURVEY
MORGANTOWN, WV

EOW Completion Report



Company: Antero Resources
Project: Ritchie County WV
Site: Hornet/Myrtle Pad
Well: Myrtle Unit 2H
Wellbore: Original Wellpath
Design: As Drilled

Local Co-ordinate Reference: Well Myrtle Unit 2H
TVD Reference: Precision 525: Myrtle 2H 1191 GL + 19' RKB @ 1
MD Reference: Precision 525: Myrtle 2H 1191 GL + 19' RKB @ 1
North Reference: Grid
Survey Calculation Method: Minimum Curvature
Database: Oklahoma District

Design Annotations

Measured Depth (usft)	Vertical Depth (usft)	Local Coordinates		Comment
		+N/-S (usft)	+E/-W (usft)	
6,933.0	6,297.3	602.1	1,930.9	Sycamore
7,160.0	6,457.6	747.9	1,992.1	Middlesex
7,365.0	6,566.7	919.6	1,983.6	Burkett
7,437.0	6,596.2	982.8	1,966.1	Tully
7,509.0	6,617.2	1,047.7	1,943.2	Marcellus

Checked By: _____ Approved By: _____ Date: _____