

RECEIVED

JUN 15 2015

WV GEOLOGICAL SURVEY
MORGANTOWN, WV



Antero Resources
Hendershot Unit 2H
Ritchie County WV
Northing: 14270980.23
Easting: 1650710.54
As Drilled

WELL DETAILS: Hendershot Unit 2H
Ground Level: 1117.0
Slot

+N-S +E-W Northing Easting Longitude
0.0 0.0 14270980.23 1650710.54 39° 17' 58.141" N 80° 57' 46.006" W

REFERENCE INFORMATION
Coordinates (N/E) Reference: Well Hendershot Unit 2H, Grid North
Datum: NAD 1983 (NAD83 CONUS)
Easting: Zone 18N (84 W to 78 W)
Zone: Zone 18N (84 W to 78 W)
System Datum: Mean Sea Level

PROJECT DETAILS: Ritchie County WV
Genie Lightfoot
15.09, June 26 2014
Scientific Drilling
421 South Eagle Lane
Oklahoma City, OK

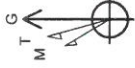
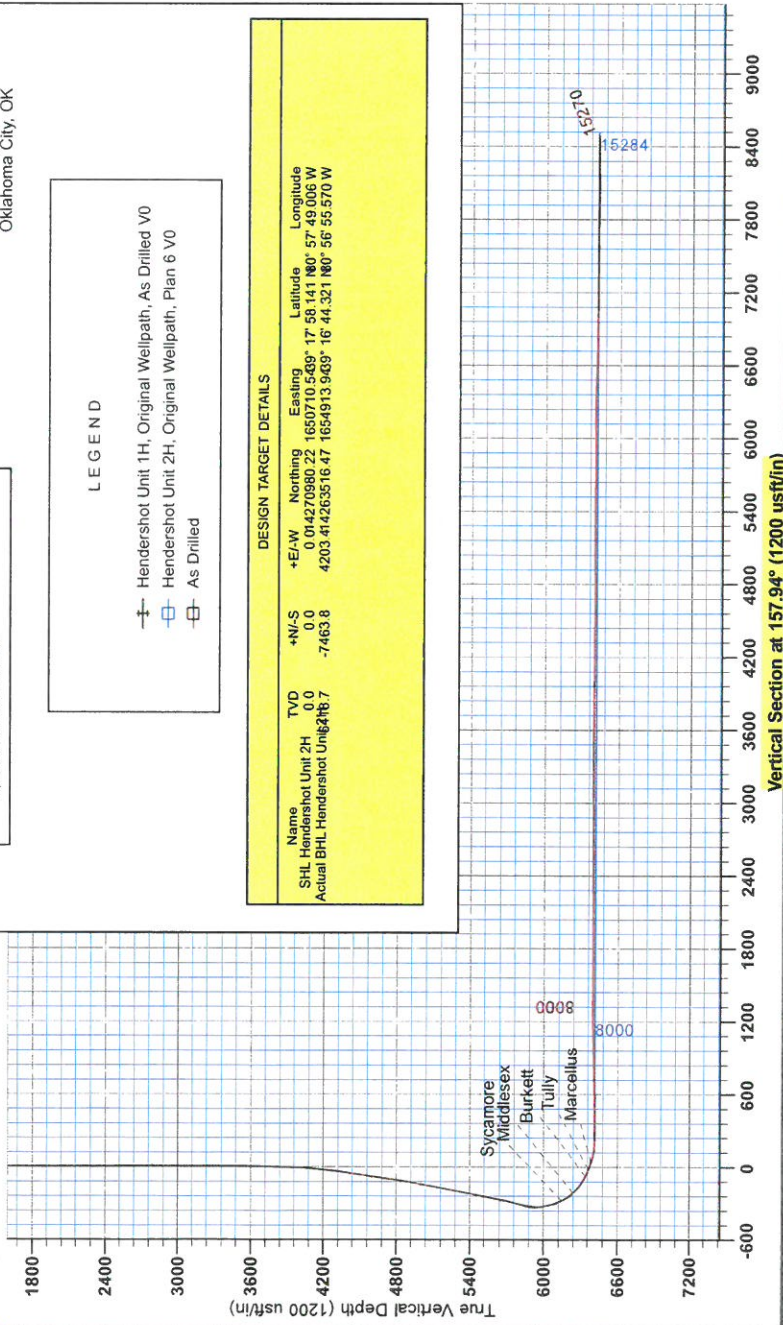


LEGEND

- Hendershot Unit 1H, Original Wellpath, As Drilled V0
- Hendershot Unit 2H, Original Wellpath, Plan 6 V0
- As Drilled

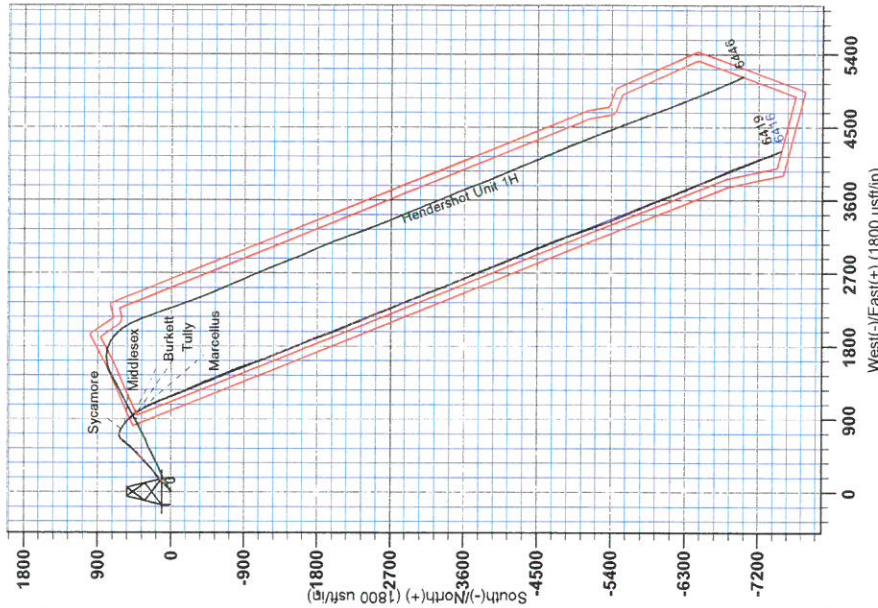
DESIGN TARGET DETAILS

Name	TVD	+N-S	+E-W	Northing	Easting	Latitude	Longitude
SHL Hendershot Unit 2H	0	0.0	0.0	0.0	0.0	0.0	0.0
Actual BHL Hendershot Unit 2H	476.7	-7463.8	4203.474263516.47	1654915.9489	16.44.3211160'	56.55.570" W	



To convert Magnetic North to Grid, Subtract 8.38°
To convert True North to Grid, Subtract 0.02°

Magnetic Field
Strength: 52292.0nT
Dip Angle: 66.91°
Date: 5/27/2014
Model: BGGM2014





RECEIVED
JUN 15 2014
WV GEOLOGICAL SURVEY
MORGANTOWN, WV

Antero Resources

Ritchie County WV
Hendershot/Paige/Eppard/Brook/Bow
Hendershot Unit 2H
Original Wellpath

Design: As Drilled

EOW Completion Report

26 June, 2014





Company: Antero Resources
Project: Ritchie County WV
Site: Hendershot/Paige/Eppard/Brook/Bow
Well: Hendershot Unit 2H
Wellbore: Original Wellpath
Design: As Drilled

Local Co-ordinate Reference: Well Hendershot Unit 2H
TVD Reference: Frontier 3: GL 1117 + 23 RKB @ 1140.0usft
MD Reference: Frontier 3: GL 1117 + 23 RKB @ 1140.0usft
North Reference: Grid
Survey Calculation Method: Minimum Curvature
Database: Oklahoma District

Project	Ritchie County WV, Ritchie County WV, WV North		
Map System:	Universal Transverse Mercator (US Survey Fee	System Datum:	Mean Sea Level
Geo Datum:	NAD 1927 (NADCON CONUS)		
Map Zone:	Zone 17N (84 W to 78 W)		

Site Hendershot/Paige/Eppard/Brook/Bow, SHL Hendershot Unit 1H

Site Position:
From: Map
Position Uncertainty: 2.0 usft

Northing: 14,270,988.12 usft
Easting: 1,650,704.41 usft
Slot Radius: 13-3/16"

Latitude: 39° 17' 58.219 N
Longitude: 80° 57' 49.084 W
Grid Convergence: 0.02 °

Well Hendershot Unit 2H

Well Position
+N/-S 0.0 usft
+E/-W 0.0 usft
Position Uncertainty 2.0 usft

Northing: 14,270,980.23 usft
Easting: 1,650,710.54 usft
Wellhead Elevation: 1,140.0 usft

Latitude: 39° 17' 58.141 N
Longitude: 80° 57' 49.006 W
Ground Level: 1,117.0 usft

Wellbore Original Wellpath

Magnetics	Model Name	Sample Date	Declination (°)	Dip Angle (°)	Field Strength (nT)
	BGGM2014	5/27/2014	-8.35	66.91	52,292

Design As Drilled

Audit Notes:

Version: 1.0
Phase: ACTUAL
Tie On Depth: 0.0

Vertical Section:

Depth From (TVD) (usft)	+N/-S (usft)	+E/-W (usft)	Direction (°)
0.0	0.0	0.0	157.94

Survey Program Date 6/26/2014

From (usft)	To (usft)	Survey (Wellbore)	Tool Name	Description
100.0	2,420.2	Survey #2 Def Gyro to Int (Original Wellpa	SDI Standard Keeper	Scientific Drilling Intl. Standard Wireline Keeper
2,688.0	3,500.3	Survey #4 Def Gyro to KOP (Original Well	SDI Standard Keeper	Scientific Drilling Intl. Standard Wireline Keeper
3,600.0	5,871.2	Survey #5 Final Gyro to KOP (Original We	SDI Standard Keeper	Scientific Drilling Intl. Standard Wireline Keeper
5,871.2	15,270.0	Survey #6 MWD (Original Wellpath)	SDI MWD	Scientific Drilling Intl. MWD - Standard ver 1.0.1

Survey

MD (usft)	Inc (°)	Azi (azimuth) (°)	TVD (usft)	N/S (usft)	E/W (usft)	V. Sec (usft)	DLeg (°/100usft)
0.0	0.00	0.00	0.0	0.0	0.0	0.0	0.00
100.0	0.56	111.63	100.0	-0.2	0.5	0.3	0.56
200.0	0.70	120.01	200.0	-0.7	1.4	1.2	0.17
300.0	0.50	124.58	300.0	-1.2	2.3	2.0	0.21
400.0	0.40	123.51	400.0	-1.7	3.0	2.7	0.10
500.0	0.51	97.39	500.0	-1.9	3.7	3.2	0.23
600.0	0.41	97.80	600.0	-2.0	4.5	3.6	0.10
700.0	0.46	102.32	700.0	-2.1	5.3	4.0	0.06
800.0	0.21	98.26	800.0	-2.3	5.8	4.3	0.25

JUN 15 2015



EOW Completion Report



Company: Antero Resources
Project: Ritchie County WV
Site: Hendershot/Paige/Eppard/Brook/Bow
Well: Hendershot Unit 2H
Wellbore: Original Wellpath
Design: As Drilled

Local Co-ordinate Reference: Well Hendershot Unit 2H
TVD Reference: Frontier 3: GL 1117 + 23 RKB @ 1140.0usft
MD Reference: Frontier 3: GL 1117 + 23 RKB @ 1140.0usft
North Reference: Grid
Survey Calculation Method: Minimum Curvature
Database: Oklahoma District

Survey

MD (usft)	Inc (°)	Azi (azimuth) (°)	TVD (usft)	N/S (usft)	E/W (usft)	V. Sec (usft)	DLeg (°/100usft)
900.0	0.27	109.52	900.0	-2.4	6.2	4.5	0.08
1,000.0	0.28	109.17	1,000.0	-2.5	6.7	4.8	0.01
1,100.0	0.13	115.31	1,100.0	-2.7	7.0	5.1	0.15
1,200.0	0.16	99.83	1,200.0	-2.7	7.3	5.3	0.05
1,300.0	0.22	100.06	1,300.0	-2.8	7.6	5.4	0.06
1,400.0	0.11	109.21	1,400.0	-2.8	7.9	5.6	0.11
1,500.0	0.10	105.38	1,500.0	-2.9	8.0	5.7	0.01
1,600.0	0.15	110.51	1,600.0	-3.0	8.2	5.9	0.05
1,700.0	0.14	98.01	1,700.0	-3.0	8.5	6.0	0.03
1,800.0	0.13	89.96	1,800.0	-3.1	8.7	6.1	0.02
1,900.0	0.14	98.07	1,900.0	-3.1	9.0	6.2	0.02
2,000.0	0.11	94.56	2,000.0	-3.1	9.2	6.3	0.03
2,100.0	0.14	106.56	2,100.0	-3.1	9.4	6.4	0.04
2,200.0	0.29	147.39	2,200.0	-3.4	9.6	6.8	0.21
2,300.0	0.29	150.34	2,300.0	-3.8	9.9	7.3	0.01
2,400.0	0.34	140.79	2,400.0	-4.3	10.2	7.8	0.07
2,420.2	0.33	122.48	2,420.2	-4.3	10.3	7.9	0.53
2,688.0	0.24	149.50	2,688.0	-5.2	11.2	9.1	0.06
2,700.0	0.03	152.83	2,700.0	-5.3	11.2	9.1	1.75
2,800.0	0.14	240.61	2,800.0	-5.4	11.2	9.1	0.14
2,900.0	0.17	282.19	2,900.0	-5.4	10.9	9.1	0.11
3,000.0	0.23	294.42	3,000.0	-5.3	10.6	8.9	0.07
3,100.0	0.16	305.49	3,100.0	-5.1	10.3	8.6	0.08
3,200.0	0.04	343.90	3,200.0	-5.0	10.2	8.4	0.13
3,300.0	0.14	28.62	3,300.0	-4.8	10.2	8.3	0.12
3,400.0	0.29	78.91	3,400.0	-4.7	10.5	8.3	0.23
3,500.0	0.23	72.85	3,500.0	-4.6	11.0	8.4	0.07
3,500.3	0.23	72.82	3,500.3	-4.6	11.0	8.4	0.03
3,600.0	1.30	44.02	3,599.9	-3.7	11.9	7.9	1.11
3,700.0	2.48	36.34	3,699.9	-1.2	14.0	6.3	1.20
3,800.0	4.90	44.65	3,799.7	3.6	18.3	3.5	2.47
3,900.0	6.96	46.69	3,899.1	10.8	25.7	-0.4	2.07
4,000.0	9.47	50.59	3,998.1	20.2	36.5	-5.0	2.57
4,100.0	12.19	49.48	4,096.3	32.3	50.8	-10.8	2.73
4,200.0	15.36	43.58	4,193.4	48.7	68.0	-19.6	3.46
4,300.0	16.81	41.04	4,289.5	69.3	86.6	-31.6	1.61
4,400.0	19.72	45.65	4,384.5	92.0	108.2	-44.6	3.25
4,500.0	23.41	47.27	4,477.5	117.2	134.9	-58.0	3.74
4,600.0	26.06	48.81	4,568.3	145.2	166.0	-72.2	2.73
4,700.0	28.75	52.33	4,657.0	174.4	201.6	-85.9	3.14
4,800.0	27.97	52.90	4,745.0	203.2	239.3	-98.4	0.83
4,900.0	26.52	50.20	4,834.0	231.6	275.2	-111.3	1.91
5,000.0	28.26	46.89	4,922.7	262.1	309.6	-126.6	2.31
5,100.0	28.98	46.02	5,010.5	295.1	344.3	-144.2	0.83

JUN 15 2015



EOW Completion Report



Company: Antero Resources
Project: Ritchie County WV
Site: Hendershot/Paige/Eppard/Brook/Bow
Well: Hendershot Unit 2H
Wellbore: Original Wellpath
Design: As Drilled

Local Co-ordinate Reference: Well Hendershot Unit 2H
TVD Reference: Frontier 3: GL 1117 + 23 RKB @ 1140.0usft
MD Reference: Frontier 3: GL 1117 + 23 RKB @ 1140.0usft
North Reference: Grid
Survey Calculation Method: Minimum Curvature
Database: Oklahoma District

Survey

MD (usft)	Inc (°)	Azi (azimuth) (°)	TVD (usft)	N/S (usft)	E/W (usft)	V. Sec (usft)	DLeg (°/100usft)
5,200.0	27.39	46.68	5,098.7	327.7	378.5	-161.6	1.62
5,300.0	27.09	43.99	5,187.6	359.9	411.0	-179.2	1.27
5,400.0	28.00	47.01	5,276.2	392.3	444.0	-196.8	1.67
5,500.0	28.12	49.31	5,364.5	423.6	479.1	-212.7	1.09
5,600.0	28.57	47.40	5,452.5	455.2	514.5	-228.6	1.01
5,700.0	26.92	42.83	5,541.0	488.0	547.5	-246.6	2.69
5,800.0	25.04	41.43	5,630.9	520.5	576.9	-265.7	1.98
5,871.2	25.81	40.69	5,695.2	543.5	597.0	-279.5	1.17
5,959.0	26.91	37.83	5,773.9	573.7	621.7	-298.2	1.91
5,989.0	26.36	35.17	5,800.7	584.5	629.7	-305.2	4.38
6,023.0	25.61	33.31	5,831.3	596.8	638.0	-313.5	3.26
6,055.0	24.68	38.24	5,860.2	607.8	646.0	-320.7	7.16
6,086.0	24.62	49.39	5,888.4	617.1	654.9	-326.0	14.98
6,118.0	25.09	60.80	5,917.5	624.8	665.9	-329.0	15.04
6,150.0	25.29	70.36	5,946.4	630.4	678.2	-329.5	12.72
6,181.0	25.10	80.72	5,974.5	633.7	691.0	-327.8	14.22
6,213.0	24.82	90.50	6,003.5	634.7	704.4	-323.7	12.91
6,276.0	25.14	107.52	6,060.7	630.6	730.4	-310.1	11.39
6,308.0	27.16	112.22	6,089.4	625.8	743.7	-300.7	9.04
6,339.0	29.47	116.06	6,116.7	619.7	757.1	-290.0	9.49
6,371.0	32.45	118.55	6,144.2	612.2	771.7	-277.5	10.13
6,374.0	32.77	118.68	6,146.7	611.4	773.1	-276.3	11.00
Sycamore							
6,403.0	35.90	119.80	6,170.6	603.4	787.4	-263.5	11.00
6,434.0	39.47	121.35	6,195.2	593.8	803.7	-248.5	11.91
6,495.0	45.33	127.91	6,240.2	570.3	837.4	-214.1	12.03
Middlesex							
6,497.0	45.53	128.10	6,241.6	569.4	838.5	-212.8	12.03
6,529.0	49.37	130.41	6,263.3	554.5	856.7	-192.1	13.12
6,561.0	53.15	132.92	6,283.3	537.9	875.4	-169.8	13.30
6,593.0	56.55	134.96	6,301.7	519.8	894.2	-145.9	11.83
6,624.0	59.84	136.72	6,318.0	500.9	912.6	-121.5	11.66
6,656.0	63.46	138.60	6,333.2	480.0	931.5	-95.0	12.44
6,679.0	65.43	140.74	6,343.2	464.2	944.9	-75.3	12.00
Burkett							
6,688.0	66.21	141.56	6,346.8	457.8	950.1	-67.5	12.00
6,719.0	67.81	142.80	6,359.0	435.3	967.6	-40.0	6.34
6,742.0	68.74	143.31	6,367.5	418.2	980.4	-19.4	4.52
Tully							
6,750.0	69.06	143.48	6,370.3	412.2	984.9	-12.1	4.52
6,782.0	71.82	146.18	6,381.1	387.6	1,002.2	17.2	11.73
6,806.0	73.67	147.66	6,388.2	368.4	1,014.7	39.7	9.70
Marcellus							
6,813.0	74.21	148.09	6,390.1	362.7	1,018.3	46.3	9.70
6,844.0	76.50	150.14	6,398.0	336.9	1,033.7	76.0	9.77

JUN 15 2015



EOW Completion Report



Company: Antero Resources
Project: Ritchie County WV
Site: Hendershot/Paige/Eppard/Brook/Bow
Well: Hendershot Unit 2H
Wellbore: Original Wellpath
Design: As Drilled

Local Co-ordinate Reference: Well Hendershot Unit 2H
TVD Reference: Frontier 3: GL 1117 + 23 RKB @ 1140.0usft
MD Reference: Frontier 3: GL 1117 + 23 RKB @ 1140.0usft
North Reference: Grid
Survey Calculation Method: Minimum Curvature
Database: Oklahoma District

Survey

MD (usft)	Inc (°)	Azi (azimuth) (°)	TVD (usft)	N/S (usft)	E/W (usft)	V. Sec (usft)	DLeg (°/100usft)
6,876.0	78.71	151.73	6,404.8	309.6	1,048.9	107.0	8.44
6,907.0	81.50	154.32	6,410.2	282.4	1,062.7	137.4	12.20
6,986.0	88.29	158.76	6,417.2	210.3	1,094.0	216.0	10.26
7,080.0	90.91	157.50	6,417.8	123.1	1,129.0	310.0	3.09
7,175.0	90.77	157.87	6,416.4	35.2	1,165.1	405.0	0.42
7,269.0	90.94	160.07	6,415.0	-52.5	1,198.8	499.0	2.35
7,364.0	90.40	156.18	6,413.9	-140.7	1,234.2	593.9	4.13
7,459.0	90.10	153.23	6,413.5	-226.6	1,274.8	688.8	3.12
7,554.0	91.68	155.07	6,412.0	-312.0	1,316.2	783.5	2.55
7,648.0	92.52	158.11	6,408.6	-398.2	1,353.5	877.4	3.35
7,743.0	93.16	158.69	6,403.9	-486.5	1,388.5	972.3	0.91
7,838.0	90.81	158.02	6,400.6	-574.7	1,423.5	1,067.2	2.57
7,933.0	90.98	158.49	6,399.1	-662.9	1,458.7	1,162.2	0.53
8,029.0	89.39	157.53	6,398.8	-751.9	1,494.6	1,258.2	1.93
8,123.0	89.36	157.53	6,399.8	-838.8	1,530.5	1,352.2	0.03
8,218.0	90.03	160.64	6,400.3	-927.5	1,564.4	1,447.2	3.35
8,313.0	90.57	162.08	6,399.8	-1,017.5	1,594.8	1,542.0	1.62
8,408.0	90.07	158.70	6,399.3	-1,107.0	1,626.7	1,636.9	3.60
8,503.0	89.53	157.09	6,399.6	-1,195.0	1,662.4	1,731.9	1.79
8,598.0	89.83	159.48	6,400.2	-1,283.3	1,697.6	1,826.9	2.54
8,693.0	90.67	158.03	6,399.8	-1,371.8	1,732.0	1,921.9	1.76
8,787.0	90.71	158.42	6,398.6	-1,459.1	1,766.9	2,015.9	0.42
8,882.0	90.13	157.11	6,397.9	-1,547.0	1,802.8	2,110.9	1.51
8,976.0	90.03	157.42	6,397.8	-1,633.7	1,839.1	2,204.9	0.35
9,066.0	90.44	156.70	6,397.4	-1,716.6	1,874.2	2,294.9	0.92
9,156.0	90.07	159.73	6,397.0	-1,800.2	1,907.6	2,384.8	3.39
9,247.0	89.29	161.94	6,397.5	-1,886.1	1,937.5	2,475.7	2.58
9,337.0	90.54	159.33	6,397.7	-1,971.0	1,967.3	2,565.6	3.22
9,428.0	90.40	157.76	6,396.9	-2,055.7	2,000.6	2,656.6	1.73
9,519.0	89.43	156.01	6,397.1	-2,139.4	2,036.3	2,747.6	2.20
9,610.0	90.44	157.19	6,397.2	-2,222.9	2,072.5	2,838.6	1.71
9,701.0	91.24	157.50	6,395.8	-2,306.9	2,107.5	2,929.5	0.94
9,791.0	90.37	158.06	6,394.6	-2,390.2	2,141.6	3,019.5	1.15
9,882.0	90.30	156.84	6,394.0	-2,474.2	2,176.5	3,110.5	1.34
9,973.0	90.13	157.45	6,393.7	-2,558.1	2,211.8	3,201.5	0.70
10,063.0	90.03	157.78	6,393.6	-2,641.3	2,246.1	3,291.5	0.38
10,157.0	90.00	157.47	6,393.5	-2,728.2	2,281.9	3,385.5	0.33
10,252.0	89.50	157.39	6,394.0	-2,815.9	2,318.3	3,480.5	0.53
10,345.0	89.70	156.19	6,394.6	-2,901.4	2,355.0	3,573.5	1.31
10,440.0	89.80	158.88	6,395.0	-2,989.2	2,391.3	3,668.5	2.83
10,535.0	89.66	158.82	6,395.5	-3,077.8	2,425.5	3,763.5	0.16
10,630.0	89.43	158.69	6,396.2	-3,166.3	2,460.0	3,858.4	0.28
10,726.0	89.29	159.51	6,397.3	-3,256.0	2,494.2	3,954.4	0.87
10,821.0	88.52	159.86	6,399.1	-3,345.1	2,527.2	4,049.4	0.89

JUN 15 2015



EOW Completion Report



Company: Antero Resources
Project: Ritchie County WV
Site: Hendershot/Paige/Eppard/Brook/Bow
Well: Hendershot Unit 2H
Wellbore: Original Wellpath
Design: As Drilled

Local Co-ordinate Reference: Well Hendershot Unit 2H
TVD Reference: Frontier 3: GL 1117 + 23 RKB @ 1140.0usft
MD Reference: Frontier 3: GL 1117 + 23 RKB @ 1140.0usft
North Reference: Grid
Survey Calculation Method: Minimum Curvature
Database: Oklahoma District

Survey

MD (usft)	Inc (°)	Azi (azimuth) (°)	TVD (usft)	N/S (usft)	E/W (usft)	V. Sec (usft)	DLeg (°/100usft)
10,916.0	90.40	158.90	6,400.0	-3,434.0	2,560.6	4,144.3	2.22
11,011.0	89.83	156.36	6,399.8	-3,521.8	2,596.8	4,239.3	2.74
11,106.0	89.40	154.45	6,400.4	-3,608.2	2,636.3	4,334.2	2.06
11,201.0	89.63	155.46	6,401.3	-3,694.3	2,676.5	4,429.1	1.09
11,296.0	89.60	158.47	6,401.9	-3,781.7	2,713.7	4,524.0	3.17
11,391.0	90.34	158.57	6,401.9	-3,870.1	2,748.5	4,619.0	0.79
11,486.0	89.93	157.32	6,401.7	-3,958.1	2,784.2	4,714.0	1.38
11,581.0	90.03	158.08	6,401.7	-4,046.0	2,820.2	4,809.0	0.81
11,676.0	90.54	158.24	6,401.3	-4,134.2	2,855.6	4,904.0	0.56
11,770.0	90.97	157.25	6,400.0	-4,221.2	2,891.2	4,998.0	1.15
11,865.0	89.80	158.50	6,399.4	-4,309.2	2,926.9	5,093.0	1.80
11,960.0	89.93	158.19	6,399.6	-4,397.5	2,962.0	5,188.0	0.35
12,055.0	90.10	156.17	6,399.6	-4,485.1	2,998.8	5,283.0	2.13
12,150.0	89.60	158.02	6,399.8	-4,572.6	3,035.8	5,378.0	2.02
12,244.0	89.60	157.37	6,400.5	-4,659.5	3,071.5	5,472.0	0.69
12,338.0	89.70	157.71	6,401.1	-4,746.4	3,107.4	5,566.0	0.38
12,433.0	89.63	161.11	6,401.6	-4,835.3	3,140.8	5,660.9	3.58
12,528.0	89.63	161.53	6,402.2	-4,925.3	3,171.2	5,755.8	0.44
12,623.0	89.16	161.58	6,403.2	-5,015.4	3,201.3	5,850.6	0.50
12,717.0	90.47	160.92	6,403.6	-5,104.4	3,231.5	5,944.4	1.56
12,812.0	91.45	160.43	6,402.0	-5,194.1	3,262.9	6,039.3	1.15
12,907.0	90.87	159.23	6,400.0	-5,283.2	3,295.7	6,134.2	1.40
13,002.0	90.44	157.89	6,399.0	-5,371.6	3,330.4	6,229.2	1.48
13,097.0	87.89	156.09	6,400.3	-5,459.0	3,367.5	6,324.2	3.29
13,192.0	87.41	156.39	6,404.2	-5,545.9	3,405.8	6,419.0	0.60
13,288.0	88.73	155.79	6,407.5	-5,633.6	3,444.6	6,514.9	1.51
13,383.0	88.72	156.65	6,409.6	-5,720.5	3,482.9	6,609.9	0.91
13,478.0	88.76	156.32	6,411.7	-5,807.6	3,520.8	6,704.8	0.35
13,573.0	89.60	156.99	6,413.0	-5,894.8	3,558.5	6,799.8	1.13
13,667.0	89.76	159.73	6,413.6	-5,982.2	3,593.1	6,893.8	2.92
13,762.0	89.66	156.88	6,414.0	-6,070.5	3,628.3	6,988.7	3.00
13,856.0	89.29	156.52	6,414.9	-6,156.8	3,665.4	7,082.7	0.55
13,951.0	89.50	159.02	6,415.9	-6,244.7	3,701.4	7,177.7	2.64
14,045.0	89.16	155.88	6,417.0	-6,331.5	3,737.4	7,271.7	3.36
14,140.0	89.66	155.67	6,418.0	-6,418.2	3,776.4	7,366.6	0.57
14,235.0	89.87	156.46	6,418.4	-6,505.0	3,814.9	7,461.6	0.86
14,331.0	89.83	156.51	6,418.6	-6,593.0	3,853.2	7,557.5	0.07
14,426.0	90.10	155.70	6,418.7	-6,679.9	3,891.7	7,652.5	0.90
14,520.0	88.08	156.77	6,420.2	-6,765.9	3,929.6	7,746.4	2.43
14,615.0	88.79	155.57	6,422.8	-6,852.7	3,968.0	7,841.3	1.47
14,710.0	88.89	159.51	6,424.7	-6,940.5	4,004.2	7,936.3	4.15
14,805.0	90.60	160.65	6,425.1	-7,029.8	4,036.6	8,031.2	2.16
14,899.0	91.01	159.35	6,423.8	-7,118.1	4,068.7	8,125.2	1.45
14,994.0	92.11	159.25	6,421.2	-7,207.0	4,102.3	8,220.1	1.16



Company: Antero Resources
Project: Ritchie County WV
Site: Hendershot/Paige/Eppard/Brook/Bow
Well: Hendershot Unit 2H
Wellbore: Original Wellpath
Design: As Drilled

Local Co-ordinate Reference: Well Hendershot Unit 2H
TVD Reference: Frontier 3: GL 1117 + 23 RKB @ 1140.0usft
MD Reference: Frontier 3: GL 1117 + 23 RKB @ 1140.0usft
North Reference: Grid
Survey Calculation Method: Minimum Curvature
Database: Oklahoma District

Survey

MD (usft)	Inc (°)	Azi (azimuth) (°)	TVD (usft)	N/S (usft)	E/W (usft)	V. Sec (usft)	DLeg (°/100usft)
15,089.0	89.77	159.14	6,419.6	-7,295.8	4,136.0	8,315.0	2.47
15,184.0	90.44	157.49	6,419.5	-7,384.0	4,171.1	8,410.0	1.87
15,210.0	90.60	158.06	6,419.2	-7,408.1	4,181.0	8,436.0	2.28
15,270.0	90.40	158.06	6,418.7	-7,463.8	4,203.4	8,496.0	0.33

Design Annotations

Measured Depth (usft)	Vertical Depth (usft)	Local Coordinates		Comment
		+N/-S (usft)	+E/-W (usft)	
6,374.0	6,146.7	611.4	773.1	Sycamore
6,495.0	6,240.2	570.3	837.4	Middlesex
6,679.0	6,343.2	464.2	944.9	Burkett
6,742.0	6,367.5	418.2	980.4	Tully
6,806.0	6,388.2	368.4	1,014.7	Marcellus

Checked By: _____ Approved By: _____ Date: _____

RECEIVED
 JUN 15 2015
 WV GEOLOGICAL SURVEY
 MORGANTOWN, WV