

State of West Virginia
Department of Environmental Protection - Office of Oil and Gas
Well Operator's Report of Well Work

API 47-085-10157 County Ritchie District Clay
Quad Pennsboro 7.5' Pad Name Charlene Field/Pool Name ---
Farm name Linda C. Dewberry Trust Well Number Bow Unit 2H
Operator (as registered with the OOG) Antero Resources Corporation
Address 1615 Wynkoop Street City Denver State CO Zip 80202

As Drilled location NAD 83/UTM Attach an as-drilled plat, profile view, and deviation survey
Top hole Northing 4,350,043m Easting 503,136m
Landing Point of Curve Northing 4,350,187.67m Easting 503,465.65m
Bottom Hole Northing 4,353,052m Easting 502,287m

Elevation (ft) 1118' GL Type of Well New Existing Type of Report Interim Final
Permit Type Deviated Horizontal Horizontal 6A Vertical Depth Type Deep Shallow
Type of Operation Convert Deepen Drill Plug Back Redrilling Rework Stimulate
Well Type Brine Disposal CBM Gas Oil Secondary Recovery Solution Mining Storage Other _____
Type of Completion Single Multiple Fluids Produced Brine Gas NGL Oil Other _____
Drilled with Cable Rotary

Drilling Media Surface hole Air Mud Fresh Water Intermediate hole Air Mud Fresh Water Brine
Production hole Air Mud Fresh Water Brine
Mud Type(s) and Additive(s)
Air - Foam & 4% KCL
Mud - Polymer

Date permit issued 10/24/2014 Date drilling commenced 10/27/2014 Date drilling ceased 1/3/2015
Date completion activities began 3/21/2015 Date completion activities ceased 6/3/2015
Verbal plugging (Y/N) N/A Date permission granted N/A Granted by N/A

Please note: Operator is required to submit a plugging application within 5 days of verbal permission to plug

Freshwater depth(s) ft 250', 260' Open mine(s) (Y/N) depths N
Salt water depth(s) ft 1017', 1613', 3233' Void(s) encountered (Y/N) depths N
Coal depth(s) ft None Identified Cavern(s) encountered (Y/N) depths N
Is coal being mined in area (Y/N) N

RECEIVED
Office of Oil and Gas
AUG 10 2015
Reviewed by: JK
10/23/2015
WV Department of Environmental Protection

API 47-085 - 10157 Farm name Linda C. Dewberry Trust Well number Bow Unit 2H

CASING STRINGS	Hole Size	Casing Size	Depth	New or Used	Grade wt/ft	Basket Depth(s)	Did cement circulate (Y/N) * Provide details below*
Conductor	30"	20"	40'	New	94#/H-40	N/A	Y
Surface	17-1/2"	13-3/8"	362'	New	48#/H-40	N/A	Y
Coal							
Intermediate 1	12-1/4"	9-5/8"	2525'	New	36#/J-55	N/A	Y
Intermediate 2							
Intermediate 3							
Production	8-3/4"/8-1/2"	5-1/2"	16,792'	New	23#/P-110	N/A	Y
Tubing		2-3/8"	6714'		4.7#/N-80		
Packer type and depth set		N/A					

Comment Details _____

CEMENT DATA	Class/Type of Cement	Number of Sacks	Slurry wt (ppg)	Yield (ft ³ /sks)	Volume (ft ³)	Cement Top (MD)	WOC (hrs)
Conductor	Class A	150 sx	15.6	1.18	38 Cu. Ft.	0'	8 Hrs.
Surface	Class A	425 sx	15.6	1.18	251 Cu. Ft.	0'	8 Hrs.
Coal							
Intermediate 1	Class A	990 sx	15.6	1.18	791 Cu. Ft.	0'	8 Hrs.
Intermediate 2							
Intermediate 3							
Production	Class H	815 sx (Lead), 1676 sx (Tail)	13.5 (Lead), 15.2 (Tail)	1.44 (Lead), 1.81 (Tail)	3383 Cu. Ft.	~500' into Intermediate Casing	8 Hrs.
Tubing							

Drillers TD (ft) 16,792' MD, 6398' TVD (BHL); 6428' TVD (Deepest Point Drilled) Loggers TD (ft) 16,743' MD
 Deepest formation penetrated Marcellus Shale Plug back to (ft) N/A
 Plug back procedure N/A

Kick off depth (ft) 5968'

Check all wireline logs run caliper density deviated/directional induction neutron resistivity gamma ray temperature

Well cored Yes No Conventional Sidewall Were cuttings collected Yes No

DESCRIBE THE CENTRALIZER PLACEMENT USED FOR EACH CASING STRING _____

Conductor - 0
 Surface - 1 above guide shoe, 1 above insert float, 1 every 4th joint to surface
 Intermediate - 1 above float joint, 1 above float collar, 1 every 4th joint to surface
 Production - 1 above float joint, 1 below float collar, 1 every 3rd joint to top of cement

WAS WELL COMPLETED AS SHOT HOLE Yes No DETAILS _____

RECEIVED
Office of Oil and Gas

WAS WELL COMPLETED OPEN HOLE? Yes No DETAILS _____

AUG 10 2015

WERE TRACERS USED Yes No TYPE OF TRACER(S) USED N/A

WV Department of
Environmental Protection

API 47- 085 - 10157 Farm name Linda C. Dewberry Trust Well number Bow Unit 2H

<u>PRODUCING FORMATION(S)</u>	<u>DEPTHS</u>	
<u>Marcellus</u>	<u>6365' (Top)</u> TVD	<u>6867' (Top)</u> MD
_____	_____	_____
_____	_____	_____
_____	_____	_____

Please insert additional pages as applicable.

GAS TEST Build up Drawdown Open Flow OIL TEST Flow Pump
 SHUT-IN PRESSURE Surface 3000 psi Bottom Hole --- psi DURATION OF TEST --- hrs
 OPEN FLOW Gas 11,562 mcfpd Oil 101 bpd NGL _____ bpd Water 222 bpd GAS MEASURED BY Estimated Orifice Pilot

<u>LITHOLOGY/ FORMATION</u>	<u>TOP DEPTH IN FT NAME TVD</u>	<u>BOTTOM DEPTH IN FT TVD</u>	<u>TOP DEPTH IN FT MD</u>	<u>BOTTOM DEPTH IN FT MD</u>	<u>DESCRIBE ROCK TYPE AND RECORD QUANTITY AND TYPE OF FLUID (FRESHWATER, BRINE, OIL, GAS, H₂S, ETC)</u>
	<u>0</u>		<u>0</u>		
					SEE ATTACHED EXHIBIT 3

Please insert additional pages as applicable.

Drilling Contractor Patterson - UTI Drilling Company LLC
 Address 207 Carlton Drive City Eighty Four State PA Zip 15330
 Logging Company Rush Wellsite Services
 Address 600 Alpha Drive City Canonsburg State PA Zip 15317
 Cementing Company Allied Oil & Gas Services, LLC
 Address 1036 East Main Street City Bridgeport State WV Zip 26330

Stimulating Company US Well Services
 Address 533 Industrial Park Drive City Jane Lew State WV Zip 26378

Please insert additional pages as applicable.

Completed by Natalie Komp Telephone 303-357-6820
 Signature *Natalie Komp* Title Permitting Agent Date 8/5/2015
 Submittal of Hydraulic Fracturing Chemical Disclosure Information Attach copy of FRACFOCUS Registry

RECEIVED
Office of Oil and Gas
AUG 10 2015
WV Department of
Environmental Protection
10/23/2015

API 47-085-10157 Farm Name Linda C. Dewberry Trust Well Number Bow Unit 2H

EXHIBIT 1

Stage No.	Perforation Date	Perforated from MD ft.	Perforated to MD ft.	Number of Perforations	Formations
1	21-Mar-15	15,532	16,701	60	Marcellus
2	9-May-15	16,332	16,501	60	Marcellus
3	9-May-15	16,131	16,300	60	Marcellus
4	10-May-15	15,931	16,100	60	Marcellus
5	10-May-15	15,730	15,899	60	Marcellus
6	10-May-15	15,530	15,699	60	Marcellus
7	10-May-15	15,329	15,499	60	Marcellus
8	11-May-15	15,129	15,298	60	Marcellus
9	11-May-15	14,929	15,098	60	Marcellus
10	11-May-15	14,728	14,897	60	Marcellus
11	12-May-15	14,528	14,697	60	Marcellus
12	12-May-15	14,327	14,496	60	Marcellus
13	12-May-15	14,127	14,296	60	Marcellus
14	12-May-15	13,926	14,096	60	Marcellus
15	13-May-15	13,726	13,895	60	Marcellus
16	13-May-15	13,526	13,695	60	Marcellus
17	13-May-15	13,325	13,494	60	Marcellus
18	13-May-15	13,125	13,294	60	Marcellus
19	14-May-15	12,924	13,093	60	Marcellus
20	14-May-15	12,724	12,893	60	Marcellus
21	14-May-15	12,523	12,692	60	Marcellus
22	14-May-15	12,323	12,492	60	Marcellus
23	15-May-15	12,123	12,292	60	Marcellus
24	15-May-15	11,922	12,091	60	Marcellus
25	15-May-15	11,722	11,891	60	Marcellus
26	15-May-15	11,521	11,690	60	Marcellus
27	16-May-15	11,321	11,490	60	Marcellus
28	16-May-15	11,120	11,289	60	Marcellus
29	16-May-15	10,920	11,089	60	Marcellus
30	16-May-15	10,720	10,889	60	Marcellus
31	17-May-15	10,519	10,688	60	Marcellus
32	17-May-15	10,319	10,488	60	Marcellus
33	17-May-15	10,118	10,287	60	Marcellus
34	17-May-15	9,918	10,087	60	Marcellus
35	18-May-15	9,717	9,886	60	Marcellus
36	18-May-15	9,517	9,686	60	Marcellus
37	18-May-15	9,317	9,486	60	Marcellus
38	18-May-15	9,116	9,285	60	Marcellus
39	19-May-15	8,916	9,085	60	Marcellus
40	19-May-15	8,715	8,884	60	Marcellus
41	19-May-15	8,515	8,684	60	Marcellus
42	19-May-15	8,314	8,483	60	Marcellus
43	19-May-15	8,114	8,283	60	Marcellus
44	20-May-15	7,914	8,083	60	Marcellus
45	20-May-15	7,713	7,882	60	Marcellus
46	20-May-15	7,513	7,682	60	Marcellus
47	20-May-15	7,312	7,481	60	Marcellus
48	20-May-15	7,112	7,281	60	Marcellus
49	21-May-15	6,911	7,080	60	Marcellus

RECEIVED
Office of Oil and Gas

AUG 10 2015

WV Department of
Environmental Protection

10/23/2015

API 47-085-10157 Farm Name Linda C. Dewberry Trust Well Number Bow Unit 2H

EXHIBIT 2

Stage No.	Stimulations Date	Avg Pump Rate	Avg Treatment Pressure (PSI)	Max Breakdown Pressure (PSI)	ISIP (PSI)	Amount of Proppant (lbs)	Amount of Water (bbls)	Amount of Nitrogen/ other (units)
1	9-May-15	57.1	7,780	NA	4,881	38,140	6,997	N/A
2	9-May-15	61.5	7,647	6,118	4,828	200,100	6,597	N/A
3	9-May-15	61.2	7,044	6,999	3,468	244,700	6,879	N/A
4	10-May-15	63.5	7,272	6,421	4,502	181,200	6,620	N/A
5	10-May-15	61.1	7,340	5,643	3,797	168,440	7,080	N/A
6	10-May-15	60.8	7,201	5,855	4,764	220,700	7,185	N/A
7	10-May-15	57.3	7,048	5,957	4,315	141,600	6,505	N/A
8	11-May-15	64.9	6,974	5,911	3,675	243,220	6,502	N/A
9	11-May-15	62.5	7,324	7,265	4,645	167,350	6,814	N/A
10	11-May-15	60.3	6,803	6,291	5,032	223,050	6,313	N/A
11	12-May-15	61.3	6,829	5,792	4,733	244,140	6,546	N/A
12	12-May-15	64.6	7,026	6,043	4,912	244,180	6,513	N/A
13	12-May-15	63.2	6,943	6,211	4,654	243,650	6,511	N/A
14	12-May-15	59.0	6,399	5,651	4,795	244,100	6,488	N/A
15	13-May-15	60.4	7,082	6,326	4,820	224,900	6,351	N/A
16	13-May-15	63.1	7,064	6,137	5,153	205,600	7,030	N/A
17	13-May-15	62.9	6,993	6,060	4,715	243,300	6,443	N/A
18	13-May-15	62.4	6,589	5,500	4,961	244,650	6,447	N/A
19	14-May-15	62.1	6,724	5,680	4,169	209,150	5,988	N/A
20	14-May-15	65.2	6,463	5,571	3,200	246,000	6,436	N/A
21	14-May-15	61.2	6,664	5,477	4,512	229,750	6,271	N/A
22	14-May-15	59.9	6,895	5,558	4,574	210,850	6,262	N/A
23	15-May-15	62.8	6,822	5,386	4,828	226,720	6,133	N/A
24	15-May-15	59.4	6,792	5,240	5,127	182,240	6,569	N/A
25	15-May-15	62.6	6,679	5,320	5,194	244,600	6,569	N/A
26	15-May-15	61.6	6,522	5,523	5,000	243,850	6,384	N/A
27	16-May-15	66.8	6,522	5,092	4,608	247,480	6,290	N/A
28	16-May-15	64.5	6,499	5,171	4,076	203,900	6,353	N/A
29	16-May-15	64.3	6,569	5,229	4,523	225,200	5,913	N/A
30	16-May-15	65.1	6,883	5,538	4,323	214,460	5,725	N/A
31	17-May-15	70.6	6,571	5,067	4,178	217,960	6,361	N/A
32	17-May-15	64.2	6,627	5,575	3,602	245,340	6,710	N/A
33	17-May-15	62.9	6,279	5,438	4,213	229,600	6,138	N/A
34	17-May-17	62.4	6,297	5,712	3,652	227,200	6,764	N/A
35	18-May-15	65.7	6,452	6,057	3,698	224,200	6,181	N/A
36	18-May-15	65.6	6,534	6,184	3,663	245,250	6,167	N/A
37	18-May-15	65.3	6,709	5,503	4,463	225,600	6,582	N/A
38	18-May-15	63.0	6,493	5,973	4,316	244,400	6,360	N/A
39	19-May-15	64.5	6,638	6,203	4,414	229,800	5,978	N/A
40	19-May-15	63.9	6,686	6,089	3,839	232,300	6,633	N/A
41	19-May-15	65.9	6,722	5,940	4,609	229,600	5,866	N/A
42	19-May-15	64.0	6,645	6,050	4,852	244,850	6,152	N/A
43	19-May-15	64.0	6,781	6,619	5,022	212,470	5,607	N/A
44	20-May-15	64.8	6,536	5,779	4,646	244,780	6,103	N/A
45	20-May-15	66.3	6,269	5,987	4,953	245,250	6,033	N/A
46	20-May-15	66.4	6,113	5,982	4,492	245,000	6,023	N/A
47	20-May-15	65.0	5,873	5,532	4,953	244,770	6,044	N/A
48	20-May-15	67.0	6,256	6,090	4,594	244,750	6,023	N/A
49	21-May-15	65.6	6,132	7,221	4,177	242,900	6,053	N/A
	AVG=	63.3	6,735	6,874	4,472	10,903,240	312,491	TOTAL

RECEIVED
 Office of Oil and Gas
 Aug 10 2015
 WV Department of
 Environmental Protection
 10/23/2015

EXHIBIT 3

LITHOLOGY/ FORMATION	TOP DEPTH (TVD)	BOTTOM DEPTH (TVD)	TOP DEPTH (MD)	BOTTOM DEPTH (MD)
	From Surface	From Surface	From Surface	From Surface
Fresh Water	250	N/A	250	N/A
Fresh Water	260	N/A	260	N/A
Shale and Siltstone	0	297	0	297
Siltstone with Trace Coal	est. 297	357	est. 297	357
Siltstone and Sandstone	est. 357	497	est. 357	497
Shale with Trace Coal	est. 497	517	est. 497	517
Shale and Siltstone	est. 517	977	est. 517	977
Sandstone	est. 977	1,017	est. 977	1,017
Shale	est. 1017	1,057	est. 1017	1,057
Sandstone	est. 1057	1,217	est. 1057	1,217
Shale with Coal	est. 1217	1,257	est. 1217	1,257
Sandstone/Siltstone/Shale	est. 1257	1,950	est. 1257	1,952
Big Lime	1,950	2,094	1,952	2,096
Big Injun	2,094	2,863	2,096	2,865
Fifty Foot Sandstone	2,863	2,964	2,865	2,966
Gordon	2,964	3,118	2,966	3,120
Bayard	3,118	3,575	3,120	3,580
Warren	3,575	4,156	3,580	4,171
Baltown	4,156	4,572	4,171	4,609
Bradford	4,572	4,976	4,609	5,071
Benson	4,976	5,199	5,071	5,329
Alexander	5,199	5,534	5,329	5,722
Elk	5,534	5,784	5,722	6,011
Rhinestreet	5,784	6,117	6,011	6,387
Sycamore	6,117	6,212	6,387	6,512
Middlesex	6,212	6,320	6,512	6,705
Burkett	6,320	6,347	6,705	6,789
Tully	6,347	6,365	6,789	6,867
Marcellus	6,365	NA	6,867	NA

*Please note Antero determines shallow formation tops based on mud logs that are only run on one well on a multi-well pad. The measured depth (MD) data on subsequent wells may be slightly different due to the well's unique departure.

RECEIVED
Office of Oil and Gas

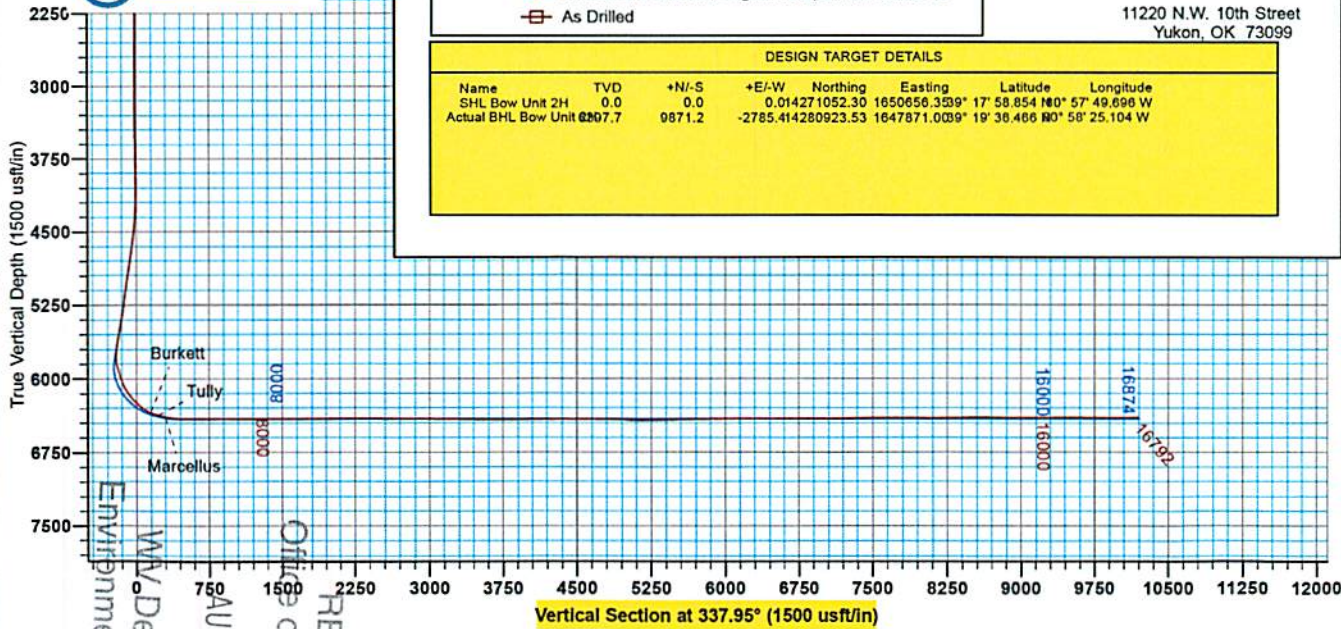
AUG 10 2015

WV Department of
Environmental Protection

10/23/2015



Antero
Bow Unit 2H
Ritchie County WV
Northing: 14271052.30
Easting: 1650656.35
As Drilled



WELL DETAILS: Bow Unit 2H

*N/-S	*E/-W	Northing	Easting	Latitude	Longitude
0.0	0.0	14271052.30	1650656.35	17° 58.854' N 0° 57' 49.696" W	

PROJECT DETAILS: Ritchie County WV

Geodetic System: Universal Transverse Mercator (US Survey Feet)
 Datum: NAD 1927 (NADCON CONUS)
 Ellipsoid: Clarke 1866
 Zone: Zone 17N (64 W to 78 W)
 System Datum: Mean Sea Level

REFERENCE INFORMATION

Coordinate (M) Reference: Well Bow Unit 2H, Grid North
 Vertical (TV) Reference: Pullman 325 CE, 111F + 40 24' @ 1142 Durl
 Section (VS) Reference: SHL - (0.0N, 0.0E)
 Measured Depth Reference: Pullman 325 CE, 111F + 40 24' @ 1142 Durl
 Calculation Method: Minimum Curvature

LEGEND

- ◇— Hendershot Unit 2H, Original Wellpath, As Drilled V0
- Bow Unit 2H, Original Wellpath, Plan 5 V0
- ◇— Bow Unit 1H, Original Wellpath, As Drilled V0
- ◇— Hendershot Unit 1H, Original Wellpath, As Drilled V0
- As Drilled

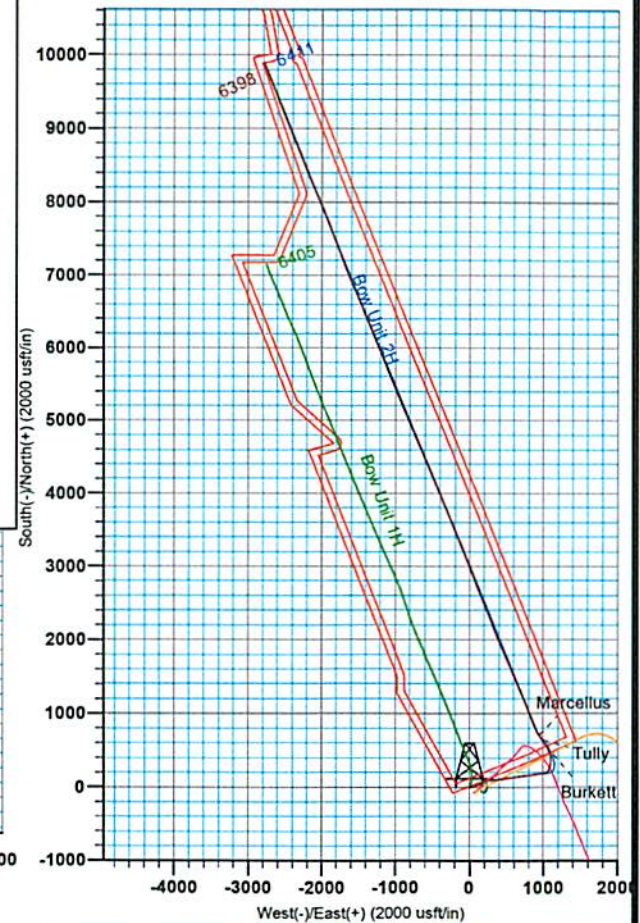
Scientific Drilling

Genie Lightfoot
11:15, January 06 2015
Scientific Drilling
11220 N.W. 10th Street
Yukon, OK 73099



To convert Magnetic North to Grid, Subtract 8.38°
 To convert True North to Grid, Subtract 0.02°

Azimuths to Grid North
 True North: -0.02°
 Magnetic North: -8.38°
 Magnetic Field
 Strength: 52239.8nT
 Dip Angle: 68.87°
 Date: 10/24/2014
 Model: BGGM2014



85-10157

RECEIVED
 Office of Oil and Gas
 AUG 10 2015
 WV Department of
 Environmental Protection

85.10157



Antero

Ritchie County WV

Charlene Pad: Hendershot/Paige/Eppard/Brook/Bow

Bow Unit 2H

Original Wellpath

Design: As Drilled

EOW Completion Report

06 January, 2015



RECEIVED
Office of Oil and Gas
10/23/2015
Scientific Drilling

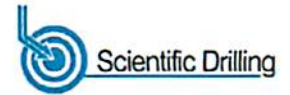
WV Department of
Environmental Protection

10/23/2015

85-10157



EOW Completion Report



Company:	Antero	Local Co-ordinate Reference:	Well Bow Unit 2H
Project:	Ritchie County WV	TVD Reference:	Patterson 325: GL 1118' + KB 24' @ 1142.0usft
Site:	Charlene Pad: Hendershot/Paige/Eppard/Brook/E	MD Reference:	Patterson 325: GL 1118' + KB 24' @ 1142.0usft
Well:	Bow Unit 2H	North Reference:	Grid
Wellbore:	Original Wellpath	Survey Calculation Method:	Minimum Curvature
Design:	As Drilled	Database:	Oklahoma District

Project	Ritchie County WV, Ritchie County WV, WV North		
Map System:	Universal Transverse Mercator (US Survey Fee	System Datum:	Mean Sea Level
Geo Datum:	NAD 1927 (NADCON CONUS)		
Map Zone:	Zone 17N (84 W to 78 W)		

Site	Charlene Pad: Hendershot/Paige/Eppard/Brook/Bow, SHL Hendershot Unit 1H				
Site Position:		Northing:	14,270,988.12 usft	Latitude:	39° 17' 58.219 N
From:	Map	Easting:	1,650,704.41 usft	Longitude:	80° 57' 49.084 W
Position Uncertainty:	2.0 usft	Slot Radius:	13-3/16"	Grid Convergence:	0.02 °

Well	Bow Unit 2H, Marcellus					
Well Position	+N/-S	0.0 usft	Northing:	14,271,052.30 usft	Latitude:	39° 17' 58.854 N
	+E/-W	0.0 usft	Easting:	1,650,656.35 usft	Longitude:	80° 57' 49.696 W
Position Uncertainty	2.0 usft		Wellhead Elevation:	1,142.0 usft	Ground Level:	1,118.0 usft

Wellbore	Original Wellpath				
Magnetics	Model Name	Sample Date	Declination (°)	Dip Angle (°)	Field Strength (nT)
	BGGM2014	10/24/2014	-8.36	66.87	52,240

Design	As Drilled				
Audit Notes:					
Version:	1.0	Phase:	ACTUAL	Tie On Depth:	0.0
Vertical Section:		Depth From (TVD) (usft)	+N/-S (usft)	+E/-W (usft)	Direction (°)
		0.0	0.0	0.0	337.95

Survey Program	Date 1/6/2015				
From (usft)	To (usft)	Survey (Wellbore)	Tool Name	Description	
111.0	5,800.0	Survey #5 Def Gyro to KOP (Original Well	Standard Keeper 104	Standard Wireline Keeper ver 1.0.4	
5,908.0	16,792.0	Survey #6 SDI MWD (Original Wellpath)	SDI MWD	Scientific Drilling Intl. MWD - Standard ver 1.0.1	

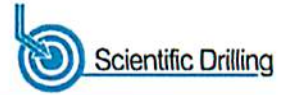
Survey								
MD (usft)	Inc (°)	Azi (azimuth) (°)	TVD (usft)	N/S (usft)	E/W (usft)	V. Sec (usft)	DLeg (°/100usft)	
0.0	0.00	0.00	0.0	0.0	0.0	0.0	0.00	
111.0	0.16	11.21	111.0	0.2	0.0	0.1	0.14	
136.0	0.11	5.51	136.0	0.2	0.0	0.2	0.21	
161.0	0.25	30.67	161.0	0.3	0.1	0.2	0.63	
186.0	0.25	359.34	186.0	0.4	0.3	0.3	0.54	
211.0	0.13	51.06	211.0	0.5	0.1	0.4	0.79	
236.0	0.25	119.55	236.0	0.4	0.2	0.3	0.94	
261.0	0.21	109.77	261.0	0.4	0.3	0.3	0.22	
286.0	0.20	148.81	286.0	0.4	0.3	0.2	0.55	
311.0	0.19	153.36	311.0	0.3	0.4	0.1	0.07	
336.0	0.11	118.78	336.0	0.2	0.4	0.1	0.47	

RECEIVED
Office of Oil and Gas
AUG 10 2015
WV Department of
Environmental Protection

85-10157



EOW Completion Report



Company: Antero	Local Co-ordinate Reference: Well Bow Unit 2H
Project: Ritchie County WV	TVD Reference: Patterson 325: GL 1118' + KB 24' @ 1142.0usft
Site: Charlene Pad: Hendershot/Paige/Eppard/Brook/E	MD Reference: Patterson 325: GL 1118' + KB 24' @ 1142.0usft
Well: Bow Unit 2H	North Reference: Grid
Wellbore: Original Wellpath	Survey Calculation Method: Minimum Curvature
Design: As Drilled	Database: Oklahoma District

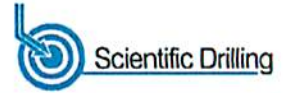
Survey									
MD (usft)	Inc (°)	Azi (azimuth) (°)		TVD (usft)	N/S (usft)	E/W (usft)	V. Sec (usft)	DLeg (°/100usft)	
361.0	0.27	162.17	162.17	361.0	0.2	0.5	0.0	0.0	0.82
386.0	0.26	143.99	143.99	386.0	0.1	0.5	-0.1	0.34	0.34
411.0	0.45	157.73	157.73	411.0	-0.1	0.6	-0.3	0.83	0.83
436.0	0.35	154.94	154.94	436.0	-0.2	0.7	-0.5	0.41	0.41
461.0	0.20	158.83	158.83	461.0	-0.3	0.7	-0.6	0.60	0.60
486.0	0.48	96.99	96.99	486.0	-0.4	0.8	-0.7	1.70	1.70
511.0	1.03	89.34	89.34	511.0	-0.4	1.2	-0.8	2.23	2.23
536.0	1.75	83.40	83.40	536.0	-0.4	1.8	-1.0	2.93	2.93
561.0	2.54	84.40	84.40	561.0	-0.3	2.7	-1.3	3.16	3.16
586.0	3.00	83.92	83.92	585.9	-0.1	3.9	-1.6	1.84	1.84
611.0	3.17	83.05	83.05	610.9	0.0	5.2	-2.0	0.71	0.71
636.0	3.51	81.52	81.52	635.9	0.2	6.7	-2.3	1.41	1.41
661.0	4.01	80.29	80.29	660.8	0.5	8.3	-2.7	2.03	2.03
686.0	4.44	79.12	79.12	685.7	0.8	10.1	-3.1	1.75	1.75
711.0	4.83	77.68	77.68	710.7	1.2	12.1	-3.4	1.63	1.63
736.0	5.00	76.88	76.88	735.6	1.7	14.2	-3.8	0.73	0.73
761.0	5.02	77.65	77.65	760.5	2.2	16.3	-4.1	0.28	0.28
786.0	5.02	78.08	78.08	785.4	2.6	18.4	-4.5	0.15	0.15
811.0	4.95	77.52	77.52	810.3	3.1	20.6	-4.9	0.34	0.34
836.0	4.95	76.98	76.98	835.2	3.6	22.7	-5.2	0.19	0.19
861.0	4.87	76.29	76.29	860.1	4.0	24.7	-5.5	0.40	0.40
886.0	4.74	76.36	76.36	885.0	4.5	26.8	-5.8	0.52	0.52
911.0	4.63	76.63	76.63	909.9	5.0	28.8	-6.1	0.45	0.45
936.0	4.51	77.19	77.19	934.8	5.5	30.7	-6.5	0.51	0.51
961.0	4.32	76.72	76.72	959.8	5.9	32.6	-6.8	0.77	0.77
986.0	4.21	77.31	77.31	984.7	6.3	34.4	-7.1	0.47	0.47
1,011.0	3.99	76.90	76.90	1,009.6	6.7	36.1	-7.3	0.89	0.89
1,036.0	3.82	77.19	77.19	1,034.6	7.1	37.8	-7.6	0.68	0.68
1,061.0	3.77	77.65	77.65	1,059.5	7.5	39.4	-7.9	0.23	0.23
1,086.0	3.61	76.85	76.85	1,084.5	7.8	41.0	-8.1	0.67	0.67
1,111.0	3.44	77.35	77.35	1,109.4	8.2	42.5	-8.4	0.69	0.69
1,136.0	3.41	77.10	77.10	1,134.4	8.5	43.9	-8.6	0.13	0.13
1,161.0	3.26	77.09	77.09	1,159.3	8.8	45.3	-8.9	0.60	0.60
1,186.0	2.98	76.99	76.99	1,184.3	9.1	46.7	-9.1	1.12	1.12
1,211.0	2.88	77.27	77.27	1,209.3	9.4	47.9	-9.3	0.40	0.40
1,236.0	2.68	76.51	76.51	1,234.2	9.7	49.1	-9.5	0.81	0.81
1,261.0	2.59	77.55	77.55	1,259.2	9.9	50.2	-9.6	0.41	0.41
1,286.0	2.44	76.71	76.71	1,284.2	10.2	51.3	-9.8	0.62	0.62
1,311.0	2.36	76.69	76.69	1,309.2	10.4	52.3	-10.0	0.32	0.32
1,336.0	2.22	76.78	76.78	1,334.1	10.7	53.3	-10.1	0.56	0.56
1,361.0	2.09	77.27	77.27	1,359.1	10.9	54.2	-10.3	0.53	0.53
1,386.0	1.89	77.42	77.42	1,384.1	11.1	55.0	-10.4	0.80	0.80
1,411.0	1.71	77.23	77.23	1,409.1	11.2	55.8	-10.5	0.72	0.72
1,436.0	1.66	76.62	76.62	1,434.1	11.4	56.5	-10.7	0.21	0.21

RECEIVED
 Office of Oil and Gas
 AUG 10 2015
 WV Department of Environmental Protection

85-10157



EOW Completion Report



Company:	Antero	Local Co-ordinate Reference:	Well Bow Unit 2H
Project:	Ritchie County WV	TVD Reference:	Patterson 325: GL 1118' + KB 24' @ 1142.0usft
Site:	Charlene Pad: Hendershot/Paige/Eppard/Brook/E	MD Reference:	Patterson 325: GL 1118' + KB 24' @ 1142.0usft
Well:	Bow Unit 2H	North Reference:	Grid
Wellbore:	Original Wellpath	Survey Calculation Method:	Minimum Curvature
Design:	As Drilled	Database:	Oklahoma District

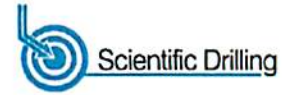
Survey									
MD (usft)	Inc (°)	Azi (azimuth) (°)		TVD (usft)	N/S (usft)	E/W (usft)	V. Sec (usft)	DLeg (°/100usft)	
1,461.0	1.58	76.24	76.24	1,459.1	11.6	57.2	-10.8	0.32	
1,486.0	1.60	75.70	75.70	1,484.1	11.7	57.9	-10.9	0.10	
1,511.0	1.56	78.52	78.52	1,509.1	11.9	58.6	-11.0	0.35	
1,536.0	1.54	78.66	78.66	1,534.1	12.0	59.2	-11.1	0.08	
1,561.0	1.45	79.49	79.49	1,559.0	12.1	59.9	-11.2	0.37	
1,586.0	1.31	80.25	80.25	1,584.0	12.2	60.5	-11.3	0.56	
1,611.0	1.23	77.75	77.75	1,609.0	12.3	61.0	-11.5	0.39	
1,636.0	1.30	79.89	79.89	1,634.0	12.5	61.5	-11.6	0.34	
1,661.0	1.06	80.65	80.65	1,659.0	12.5	62.0	-11.7	0.96	
1,686.0	0.81	75.48	75.48	1,684.0	12.6	62.4	-11.7	1.05	
1,711.0	0.90	79.70	79.70	1,709.0	12.7	62.8	-11.8	0.44	
1,736.0	0.71	83.52	83.52	1,734.0	12.8	63.2	-11.9	0.79	
1,761.0	0.67	82.63	82.63	1,759.0	12.8	63.5	-12.0	0.17	
1,786.0	0.71	84.37	84.37	1,784.0	12.8	63.8	-12.0	0.18	
1,811.0	0.63	87.53	87.53	1,809.0	12.8	64.0	-12.1	0.35	
1,836.0	0.51	86.47	86.47	1,834.0	12.9	64.3	-12.2	0.48	
1,861.0	0.54	87.13	87.13	1,859.0	12.9	64.5	-12.3	0.12	
1,886.0	0.52	81.77	81.77	1,884.0	12.9	64.8	-12.4	0.21	
1,911.0	0.45	91.31	91.31	1,909.0	12.9	65.0	-12.4	0.43	
1,936.0	0.45	81.26	81.26	1,934.0	12.9	65.2	-12.5	0.32	
1,961.0	0.49	83.13	83.13	1,959.0	12.9	65.4	-12.5	0.17	
1,986.0	0.39	81.15	81.15	1,984.0	13.0	65.6	-12.6	0.40	
2,011.0	0.60	76.81	76.81	2,009.0	13.0	65.8	-12.6	0.85	
2,036.0	0.46	84.51	84.51	2,034.0	13.1	66.0	-12.7	0.63	
2,061.0	0.28	84.34	84.34	2,059.0	13.1	66.2	-12.7	0.72	
2,086.0	0.40	83.61	83.61	2,084.0	13.1	66.3	-12.8	0.48	
2,111.0	0.40	84.69	84.69	2,109.0	13.1	66.5	-12.8	0.03	
2,136.0	0.46	82.87	82.87	2,134.0	13.1	66.7	-12.9	0.25	
2,161.0	0.45	88.51	88.51	2,159.0	13.1	66.9	-12.9	0.18	
2,186.0	0.40	84.03	84.03	2,184.0	13.2	67.0	-13.0	0.24	
2,211.0	0.43	77.67	77.67	2,209.0	13.2	67.2	-13.0	0.22	
2,236.0	0.41	78.93	78.93	2,234.0	13.2	67.4	-13.0	0.09	
2,261.0	0.42	73.77	73.77	2,259.0	13.3	67.6	-13.1	0.15	
2,286.0	0.42	81.36	81.36	2,284.0	13.3	67.8	-13.1	0.22	
2,311.0	0.35	86.78	86.78	2,309.0	13.3	67.9	-13.2	0.32	
2,336.0	0.29	79.31	79.31	2,334.0	13.3	68.1	-13.2	0.29	
2,361.0	0.27	88.65	88.65	2,359.0	13.3	68.2	-13.2	0.20	
2,386.0	0.45	97.15	97.15	2,384.0	13.3	68.3	-13.3	0.75	
2,411.0	0.43	93.64	93.64	2,409.0	13.3	68.5	-13.4	0.13	
2,436.0	0.51	83.73	83.73	2,434.0	13.3	68.7	-13.5	0.46	
2,461.0	0.45	94.20	94.20	2,459.0	13.3	68.9	-13.5	0.42	
2,486.0	0.45	100.86	100.86	2,484.0	13.3	69.1	-13.6	0.21	
2,511.0	0.45	98.19	98.19	2,509.0	13.3	69.3	-13.7	0.08	
2,536.0	0.45	103.92	103.92	2,534.0	13.2	69.5	-13.8	0.18	
2,561.0	0.44	112.96	112.96	2,559.0	13.2	69.7	-14.0	0.28	

RECEIVED
Office of Oil and Gas
AUG 10 2015
WV Department of Environmental Protection

85-1015 7



EOW Completion Report



Company:	Antero	Local Co-ordinate Reference:	Well Bow Unit 2H
Project:	Ritchie County WV	TVD Reference:	Patterson 325: GL 1118' + KB 24' @ 1142.0usft
Site:	Charlene Pad: Hendershot/Paige/Eppard/Brook/E	MD Reference:	Patterson 325: GL 1118' + KB 24' @ 1142.0usft
Well:	Bow Unit 2H	North Reference:	Grid
Wellbore:	Original Wellpath	Survey Calculation Method:	Minimum Curvature
Design:	As Drilled	Database:	Oklahoma District

Survey								
MD (usft)	Inc (°)	Azi (azimuth) (°)	TVD (usft)	N/S (usft)	E/W (usft)	V. Sec (usft)	DLeg (°/100usft)	
2,586.0	0.36	114.16	2,584.0	13.1	69.9	-14.1	0.32	
2,611.0	0.40	107.88	2,609.0	13.0	70.0	-14.2	0.23	
2,636.0	0.38	112.06	2,634.0	13.0	70.2	-14.3	0.14	
2,661.0	0.45	118.43	2,659.0	12.9	70.3	-14.4	0.33	
2,686.0	0.49	125.84	2,684.0	12.8	70.5	-14.6	0.29	
2,711.0	0.28	97.01	2,709.0	12.7	70.7	-14.7	1.12	
2,736.0	0.44	121.75	2,734.0	12.7	70.8	-14.8	0.88	
2,761.0	0.39	102.67	2,759.0	12.6	71.0	-15.0	0.58	
2,786.0	0.27	134.10	2,784.0	12.5	71.1	-15.1	0.85	
2,811.0	0.32	105.75	2,809.0	12.5	71.2	-15.2	0.61	
2,836.0	0.25	92.91	2,834.0	12.5	71.3	-15.2	0.38	
2,861.0	0.33	123.49	2,859.0	12.4	71.4	-15.3	0.69	
2,886.0	0.26	103.10	2,884.0	12.4	71.6	-15.4	0.50	
2,911.0	0.31	114.47	2,909.0	12.3	71.7	-15.5	0.30	
2,936.0	0.18	124.30	2,934.0	12.3	71.8	-15.6	0.54	
2,961.0	0.23	124.15	2,959.0	12.2	71.8	-15.6	0.20	
2,986.0	0.16	105.63	2,984.0	12.2	71.9	-15.7	0.37	
3,011.0	0.30	154.65	3,009.0	12.1	72.0	-15.8	0.92	
3,036.0	0.20	145.04	3,034.0	12.0	72.0	-15.9	0.43	
3,061.0	0.39	125.07	3,059.0	11.9	72.1	-16.0	0.85	
3,086.0	0.36	129.08	3,084.0	11.8	72.3	-16.1	0.16	
3,111.0	0.39	115.97	3,109.0	11.8	72.4	-16.3	0.36	
3,136.0	0.41	113.32	3,134.0	11.7	72.6	-16.4	0.11	
3,161.0	0.36	114.96	3,159.0	11.6	72.7	-16.5	0.20	
3,186.0	0.37	105.03	3,184.0	11.6	72.9	-16.6	0.26	
3,211.0	0.97	79.03	3,209.0	11.6	73.1	-16.7	2.63	
3,236.0	1.66	67.94	3,234.0	11.8	73.7	-16.8	2.93	
3,261.0	2.65	62.82	3,258.9	12.2	74.5	-16.7	4.03	
3,286.0	3.50	59.70	3,283.9	12.8	75.7	-16.6	3.46	
3,311.0	4.05	60.12	3,308.9	13.6	77.1	-16.3	2.20	
3,336.0	4.74	58.67	3,333.8	14.6	78.8	-16.0	2.80	
3,361.0	5.38	57.17	3,358.7	15.8	80.6	-15.7	2.61	
3,386.0	6.07	56.35	3,383.6	17.1	82.7	-15.2	2.78	
3,411.0	7.14	55.63	3,408.4	18.8	85.1	-14.6	4.29	
3,436.0	7.85	55.94	3,433.2	20.6	87.8	-13.9	2.84	
3,461.0	8.39	58.06	3,457.9	22.5	90.8	-13.2	2.47	
3,486.0	8.80	59.51	3,482.6	24.4	94.0	-12.6	1.85	
3,511.0	9.27	60.98	3,507.3	26.4	97.7	-12.1	2.09	
3,536.0	9.59	62.87	3,532.0	28.3	101.0	-11.7	1.78	
3,561.0	9.74	63.12	3,556.6	30.2	104.7	-11.3	0.62	
3,586.0	9.90	63.07	3,581.3	32.2	108.5	-10.9	0.64	
3,611.0	9.96	63.16	3,605.9	34.1	112.4	-10.6	0.25	
3,636.0	9.96	63.08	3,630.5	36.1	116.2	-10.2	0.06	
3,661.0	9.45	61.73	3,655.2	38.0	120.0	-9.8	2.23	

RECEIVED
 Office of Oil and Gas
 AUG 10 2015
 WV Department of Environmental Protection

85-10157



EOW Completion Report



Company:	Antero	Local Co-ordinate Reference:	Well Bow Unit 2H
Project:	Ritchie County WV	TVD Reference:	Patterson 325: GL 1118' + KB 24' @ 1142.0usft
Site:	Charlene Pad: Hendershot/Paige/Eppard/Brook/E	MD Reference:	Patterson 325: GL 1118' + KB 24' @ 1142.0usft
Well:	Bow Unit 2H	North Reference:	Grid
Wellbore:	Original Wellpath	Survey Calculation Method:	Minimum Curvature
Design:	As Drilled	Database:	Oklahoma District

MD (usft)	Inc (°)	Azi (azimuth) (°)	TVD (usft)	N/S (usft)	E/W (usft)	V. Sec (usft)	DLeg (°/100usft)
3,686.0	9.47	61.83	3,679.8	40.0	123.6	-9.4	0.10
3,711.0	9.48	62.46	3,704.5	41.9	127.2	-9.0	0.42
3,736.0	9.65	63.78	3,729.1	43.8	130.9	-8.6	1.11
3,761.0	9.91	64.23	3,753.8	45.6	134.8	-8.3	1.08
3,786.0	10.04	64.80	3,778.4	47.5	138.7	-8.1	0.65
3,811.0	10.20	65.00	3,803.0	49.3	142.6	-7.8	0.66
3,836.0	10.25	64.84	3,827.6	51.2	146.7	-7.6	0.23
3,861.0	10.25	64.14	3,852.2	53.1	150.7	-7.3	0.50
3,886.0	10.30	63.00	3,876.8	55.1	154.7	-7.0	0.84
3,911.0	10.14	62.59	3,901.4	57.2	158.6	-6.6	0.70
3,936.0	10.25	63.84	3,926.0	59.1	162.6	-6.2	0.99
3,961.0	10.48	65.02	3,950.6	61.1	166.6	-5.9	1.25
3,986.0	10.94	66.22	3,975.2	63.0	170.9	-5.7	2.04
4,011.0	11.60	67.39	3,999.7	64.9	175.3	-5.6	2.79
4,036.0	12.02	68.68	4,024.2	66.8	180.1	-5.7	1.98
4,061.0	12.52	69.80	4,048.6	68.7	185.1	-5.8	2.21
4,086.0	12.87	70.17	4,073.0	70.6	190.2	-6.0	1.44
4,111.0	13.39	69.71	4,097.3	72.5	195.6	-6.2	2.12
4,136.0	13.53	70.00	4,121.6	74.6	201.0	-6.4	0.62
4,161.0	13.71	69.82	4,145.9	76.6	206.5	-6.6	0.74
4,186.0	13.69	70.31	4,170.2	78.6	212.1	-6.8	0.47
4,211.0	13.34	71.58	4,194.5	80.5	217.6	-7.1	1.84
4,236.0	12.98	73.02	4,218.9	82.2	223.1	-7.5	1.95
4,261.0	13.06	74.73	4,243.2	83.8	228.5	-8.1	1.57
4,286.0	13.45	77.45	4,267.6	85.2	234.0	-8.9	2.94
4,311.0	13.84	78.79	4,291.9	86.4	239.8	-10.0	2.01
4,336.0	15.16	80.72	4,316.1	87.5	246.0	-11.2	5.62
4,361.0	16.14	81.57	4,340.1	88.5	252.6	-12.8	4.03
4,386.0	17.22	82.63	4,364.1	89.5	259.7	-14.5	4.49
4,411.0	18.28	83.20	4,387.9	90.5	267.3	-16.5	4.30
4,436.0	18.72	83.39	4,411.6	91.4	275.2	-18.6	1.78
4,461.0	20.39	83.57	4,435.2	92.3	283.5	-20.8	6.68
4,486.0	20.52	83.21	4,458.6	93.3	292.2	-23.2	0.72
4,511.0	21.43	82.42	4,481.9	94.5	301.0	-25.5	3.81
4,536.0	22.31	82.33	4,505.1	95.7	310.3	-27.8	3.52
4,561.0	23.39	82.60	4,528.2	97.0	319.9	-30.2	4.34
4,586.0	23.91	82.90	4,551.1	98.2	329.8	-32.8	2.13
4,611.0	24.58	83.04	4,573.9	99.5	340.0	-35.4	2.69
4,636.0	25.04	83.28	4,596.6	100.7	350.4	-38.2	1.88
4,661.0	25.71	83.38	4,619.1	102.0	361.1	-41.0	2.69
4,686.0	26.72	83.24	4,641.6	103.3	372.1	-44.0	4.05
4,711.0	27.66	83.07	4,663.8	104.6	383.4	-47.0	3.77
4,736.0	28.19	83.12	4,685.9	106.0	395.0	-50.0	2.12
4,761.0	29.07	83.01	4,707.8	107.5	406.9	-53.1	3.53

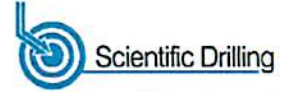
RECEIVED
Office of Oil and Gas

AUG 10 2015

85-10157



EOW Completion Report



Company: Antero	Local Co-ordinate Reference: Well Bow Unit 2H
Project: Ritchie County WV	TVD Reference: Patterson 325: GL 1118' + KB 24' @ 1142.0usft
Site: Charlene Pad: Hendershot/Paige/Eppard/Brook/E	MD Reference: Patterson 325: GL 1118' + KB 24' @ 1142.0usft
Well: Bow Unit 2H	North Reference: Grid
Wellbore: Original Wellpath	Survey Calculation Method: Minimum Curvature
Design: As Drilled	Database: Oklahoma District

Survey								
MD (usft)	Inc (°)	Azi (azimuth) (°)		TVD (usft)	N/S (usft)	EW (usft)	V. Sec (usft)	DLeg (°/100usft)
4,786.0	29.57	83.23		4,729.6	108.9	419.1	-56.3	2.05
4,811.0	29.90	83.12		4,751.3	110.4	431.4	-59.6	1.34
4,836.0	30.20	83.16		4,773.0	111.9	443.8	-62.9	1.20
4,861.0	29.59	82.95		4,794.7	113.4	456.2	-66.1	2.48
4,886.0	29.80	82.88		4,816.4	115.0	468.5	-69.3	0.85
4,911.0	30.10	82.87		4,838.0	116.5	480.9	-72.5	1.20
4,936.0	30.37	82.89		4,859.6	118.1	493.3	-75.8	1.08
4,961.0	30.13	82.88		4,881.2	119.6	505.8	-79.0	0.96
4,986.0	30.19	82.97		4,902.9	121.2	518.3	-82.3	0.30
5,011.0	30.10	82.72		4,924.5	122.7	530.8	-85.5	0.62
5,036.0	30.21	82.60		4,946.1	124.3	543.2	-88.7	0.50
5,061.0	30.48	82.63		4,967.7	126.0	555.7	-91.9	1.08
5,086.0	30.45	82.44		4,989.2	127.6	568.3	-95.1	0.40
5,111.0	30.85	82.32		5,010.7	129.3	580.9	-98.3	1.62
5,136.0	31.02	82.34		5,032.2	131.0	593.7	-101.4	0.68
5,161.0	30.89	82.18		5,053.6	132.7	606.4	-104.6	0.62
5,186.0	30.06	81.58		5,075.1	134.5	619.0	-107.7	3.54
5,211.0	30.23	81.33		5,096.8	136.4	631.4	-110.6	0.85
5,236.0	30.03	81.11		5,118.4	138.3	643.8	-113.5	0.91
5,261.0	30.13	81.07		5,140.0	140.3	656.2	-116.3	0.41
5,286.0	30.40	81.00		5,161.6	142.2	668.6	-119.2	1.09
5,311.0	30.30	81.14		5,183.2	144.2	681.1	-122.1	0.49
5,336.0	30.54	81.31		5,204.7	146.1	693.6	-125.0	1.02
5,361.0	30.21	81.55		5,226.3	148.0	706.1	-127.9	1.41
5,386.0	30.47	81.65		5,247.9	149.8	718.6	-130.9	1.06
5,411.0	30.68	81.24		5,269.4	151.7	731.2	-133.9	1.18
5,436.0	31.16	81.99		5,290.9	153.6	743.9	-136.9	2.46
5,461.0	31.80	82.02		5,312.2	155.4	756.8	-140.1	2.56
5,486.0	32.22	82.02		5,333.4	157.3	769.9	-143.3	1.68
5,511.0	32.23	82.15		5,354.5	159.1	783.1	-146.5	0.28
5,536.0	32.22	82.38		5,375.7	160.9	796.3	-149.8	0.49
5,561.0	32.34	82.91		5,396.8	162.6	809.6	-153.2	1.23
5,586.0	32.12	83.47		5,418.0	164.2	822.8	-156.7	1.48
5,611.0	31.68	84.07		5,439.2	165.6	836.0	-160.3	2.17
5,636.0	31.60	84.40		5,460.5	166.9	849.0	-164.0	0.76
5,661.0	31.12	84.53		5,481.8	168.2	862.0	-167.7	1.94
5,686.0	31.14	84.63		5,503.2	169.4	874.8	-171.4	0.22
5,711.0	31.34	84.71		5,524.6	170.6	887.7	-175.1	0.82
5,736.0	31.88	84.87		5,545.9	171.8	900.8	-178.9	2.19
5,761.0	31.24	84.79		5,567.2	173.0	913.8	-182.7	2.57
5,786.0	30.76	84.66		5,588.6	174.2	926.6	-186.5	1.94
5,908.0	28.23	80.30		5,694.8	181.9	986.2	-201.6	2.72
5,937.0	27.52	79.63		5,720.4	184.3	999.5	-204.4	2.68
5,968.0	27.31	75.46		5,748.0	187.4	1,013.4	-206.8	6.23

RECEIVED
 Office of Oil and Gas
 AUG 10 2015
 WV Department of
 Environmental Protection

85-10157



EOW Completion Report



Company: Antero	Local Co-ordinate Reference: Well Bow Unit 2H
Project: Ritchie County WV	TVD Reference: Patterson 325: GL 1118' + KB 24' @ 1142.0usft
Site: Charlene Pad: Hendershot/Paige/Eppard/Brook/E	MD Reference: Patterson 325: GL 1118' + KB 24' @ 1142.0usft
Well: Bow Unit 2H	North Reference: Grid
Wellbore: Original Wellpath	Survey Calculation Method: Minimum Curvature
Design: As Drilled	Database: Oklahoma District

Survey							
MD (usft)	Inc (°)	Azi (azimuth) (°)	TVD (usft)	N/S (usft)	E/W (usft)	V. Sec (usft)	DLeg (°/100usft)
5,999.0	27.16	68.59	5,775.5	191.7	1,026.9	-207.8	10.15
6,031.0	27.21	59.91	5,804.0	198.1	1,040.0	-206.9	12.38
6,062.0	26.37	50.63	5,831.7	206.0	1,051.5	-203.8	13.75
6,094.0	25.84	42.58	5,860.4	215.6	1,061.7	-198.7	11.18
6,125.0	25.48	35.90	5,888.4	226.0	1,070.2	-192.3	9.40
6,156.0	25.56	29.04	5,916.4	237.3	1,077.4	-184.5	9.53
6,188.0	25.61	22.77	5,945.2	249.7	1,083.4	-175.3	8.46
6,219.0	24.89	21.50	5,973.3	261.9	1,088.4	-165.8	2.91
6,251.0	24.07	21.28	6,002.4	274.3	1,093.2	-156.2	2.58
6,282.0	24.53	17.37	6,030.7	286.3	1,097.4	-146.6	5.40
6,313.0	27.36	10.85	6,058.5	299.5	1,100.7	-135.7	12.95
6,345.0	30.56	5.51	6,086.5	314.8	1,102.9	-122.3	12.85
6,376.0	33.81	2.46	6,112.8	331.2	1,104.0	-107.4	11.72
6,407.0	36.69	359.77	6,138.1	349.1	1,104.3	-91.0	10.55
6,439.0	39.44	358.02	6,163.3	368.9	1,103.9	-72.6	9.23
6,470.0	40.76	357.19	6,187.0	388.8	1,103.1	-53.8	4.59
6,502.0	42.51	352.48	6,210.9	410.0	1,101.2	-33.4	11.20
6,533.0	44.51	346.42	6,233.4	430.9	1,097.2	-12.5	14.92
6,564.0	47.15	341.74	6,255.0	452.3	1,091.1	9.6	13.77
6,596.0	50.23	339.11	6,276.1	474.9	1,083.1	33.6	11.43
6,627.0	54.21	335.80	6,295.1	497.5	1,073.7	58.1	15.36
6,659.0	58.65	333.91	6,312.8	521.7	1,062.3	84.7	14.72
6,690.0	62.95	331.92	6,327.9	545.7	1,050.0	111.6	14.96
6,721.0	67.52	329.33	6,340.9	570.2	1,036.2	139.5	16.58
6,729.0	68.27	328.89	6,343.9	576.6	1,032.4	146.9	10.67
Burkett							
6,753.0	70.52	327.58	6,352.4	595.7	1,020.5	169.0	10.67
6,784.0	72.73	325.91	6,362.1	620.3	1,004.4	197.9	8.77
6,813.0	72.90	325.57	6,370.7	643.2	988.8	224.9	1.25
Tully							
6,816.0	72.92	325.54	6,371.6	645.6	987.2	227.7	1.25
6,847.0	75.55	324.60	6,380.0	670.0	970.1	256.8	8.97
6,878.0	79.15	327.52	6,386.8	695.1	953.2	286.4	14.81
6,891.0	79.79	328.21	6,389.2	705.9	946.4	299.0	7.19
Marcellus							
6,910.0	80.74	329.21	6,392.4	721.9	936.7	317.5	7.19
6,941.0	81.94	331.04	6,397.1	748.5	921.4	347.8	7.00
6,972.0	82.21	330.58	6,401.3	775.3	906.5	378.3	1.71
7,004.0	83.91	332.58	6,405.2	803.3	891.4	409.9	8.17
7,029.0	85.69	334.51	6,407.5	825.5	880.3	434.7	10.48
7,041.0	86.23	335.12	6,408.3	836.4	875.2	446.6	6.78
7,085.0	89.70	338.42	6,409.9	876.8	857.8	490.6	10.88
7,135.0	90.37	339.40	6,409.8	923.4	839.8	540.6	2.37
7,229.0	90.13	340.16	6,409.4	1,011.6	807.4	634.5	0.85
7,324.0	90.00	339.16	6,409.3	1,100.7	774.3	729.5	1.06

RECEIVED
 Office of Oil and Gas
 AUG 10 2015
 WV Department of
 Environmental Protection

85-10157



EOW Completion Report



Company:	Antero	Local Co-ordinate Reference:	Well Bow Unit 2H
Project:	Ritchie County WV	TVD Reference:	Patterson 325: GL 1118' + KB 24' @ 1142.0usft
Site:	Charlene Pad: Hendershot/Paige/Eppard/Brook/E	MD Reference:	Patterson 325: GL 1118' + KB 24' @ 1142.0usft
Well:	Bow Unit 2H	North Reference:	Grid
Wellbore:	Original Wellpath	Survey Calculation Method:	Minimum Curvature
Design:	As Drilled	Database:	Oklahoma District

MD (usft)	Inc (°)	Azi (azimuth) (°)	TVD (usft)	N/S (usft)	E/W (usft)	V. Sec (usft)	DLeg (°/100usft)
7,418.0	89.90	336.23	6,409.4	1,187.7	738.7	823.5	3.12
7,512.0	89.63	335.29	6,409.8	1,273.4	700.1	917.4	1.04
7,607.0	89.60	336.75	6,410.4	1,360.2	661.5	1,012.4	1.54
7,701.0	90.10	337.92	6,410.7	1,446.9	625.2	1,106.3	1.35
7,795.0	89.70	337.73	6,410.8	1,533.9	589.8	1,200.3	0.47
7,889.0	90.27	336.39	6,410.9	1,620.5	553.1	1,294.3	1.55
7,983.0	90.40	336.30	6,410.3	1,706.6	515.4	1,388.3	0.17
8,077.0	90.07	337.08	6,409.9	1,792.9	478.2	1,482.3	0.90
8,172.0	89.83	335.69	6,410.0	1,880.0	440.2	1,577.2	1.48
8,266.0	90.27	336.96	6,409.9	1,966.1	402.4	1,671.2	1.43
8,360.0	90.47	337.45	6,409.3	2,052.7	366.0	1,765.2	0.56
8,454.0	90.00	339.72	6,408.9	2,140.2	331.7	1,859.2	2.47
8,548.0	90.84	339.00	6,408.3	2,228.2	298.5	1,953.1	1.18
8,642.0	90.37	338.78	6,407.3	2,315.9	264.7	2,047.1	0.55
8,736.0	90.47	337.54	6,406.6	2,403.1	229.7	2,141.1	1.32
8,831.0	89.93	338.79	6,406.2	2,491.3	194.4	2,236.1	1.43
8,925.0	89.97	335.92	6,406.3	2,578.1	158.2	2,330.1	3.05
9,019.0	89.70	339.38	6,406.6	2,665.0	122.5	2,424.1	3.69
9,113.0	89.80	339.85	6,407.0	2,753.1	89.7	2,518.0	0.51
9,207.0	89.66	339.67	6,407.4	2,841.3	57.2	2,612.0	0.24
9,301.0	89.73	339.36	6,407.9	2,929.3	24.3	2,706.0	0.34
9,395.0	88.89	337.97	6,409.1	3,016.9	-9.9	2,799.9	1.73
9,489.0	88.39	338.71	6,411.3	3,104.2	-44.6	2,893.9	0.95
9,584.0	87.89	338.31	6,414.4	3,192.6	-79.4	2,988.8	0.67
9,678.0	89.70	337.93	6,416.4	3,279.8	-114.4	3,082.8	1.97
9,772.0	90.27	337.84	6,416.4	3,366.9	-149.8	3,176.8	0.61
9,866.0	88.86	337.83	6,417.1	3,453.9	-185.2	3,270.8	1.50
9,960.0	89.63	338.13	6,418.3	3,541.0	-220.5	3,364.8	0.88
10,054.0	90.13	339.21	6,418.5	3,628.6	-254.7	3,458.8	1.27
10,148.0	89.23	338.10	6,419.1	3,716.2	-288.9	3,552.8	1.52
10,242.0	89.43	337.46	6,420.2	3,803.2	-324.4	3,646.8	0.71
10,335.0	89.53	337.37	6,421.0	3,889.0	-360.1	3,739.8	0.14
10,429.0	90.71	338.52	6,420.8	3,976.1	-395.4	3,833.8	1.75
10,523.0	90.91	336.88	6,419.5	4,063.1	-431.1	3,927.8	1.76
10,617.0	89.90	337.00	6,418.8	4,149.6	-467.9	4,021.7	1.08
10,710.0	90.80	337.37	6,418.3	4,235.3	-504.0	4,114.7	1.05
10,804.0	89.76	338.73	6,417.8	4,322.5	-539.1	4,208.7	1.82
10,899.0	90.57	338.19	6,417.5	4,410.9	-574.0	4,303.7	1.02
10,994.0	90.30	337.45	6,416.8	4,498.8	-609.8	4,398.7	0.83
11,088.0	89.40	337.65	6,417.0	4,585.7	-645.7	4,492.7	0.98
11,182.0	90.40	337.39	6,417.2	4,672.6	-681.7	4,586.7	1.10
11,276.0	89.63	337.59	6,417.2	4,759.4	-717.7	4,680.7	0.85
11,390.0	89.90	337.25	6,417.7	4,864.7	-761.4	4,794.7	0.38
11,464.0	88.49	337.58	6,418.7	4,933.0	-789.9	4,888.7	1.96

RECEIVED
Office of Oil and Gas
AUG 10 2015
WV Department of Environmental Protection

Company:	Antero	Local Co-ordinate Reference:	Well Bow Unit 2H
Project:	Ritchie County WV	TVD Reference:	Patterson 325: GL 1118' + KB 24' @ 1142.0usft
Site:	Charlene Pad: Hendershot/Paige/Eppard/Brook/E	MD Reference:	Patterson 325: GL 1118' + KB 24' @ 1142.0usft
Well:	Bow Unit 2H	North Reference:	Grid
Wellbore:	Original Wellpath	Survey Calculation Method:	Minimum Curvature
Design:	As Drilled	Database:	Oklahoma District

Survey									
MD (usft)	Inc (°)	Azi (azimuth) (°)		TVD (usft)	N/S (usft)	E/W (usft)	V. Sec (usft)	DLeg (°/100usft)	
11,558.0	87.72	337.28	337.28	6,421.8	5,019.7	-825.9	4,962.6	0.88	
11,653.0	88.05	337.77	337.77	6,425.3	5,107.4	-862.2	5,057.6	0.62	
11,746.0	88.42	337.31	337.31	6,428.2	5,193.4	-897.7	5,150.5	0.63	
11,840.0	91.44	339.01	339.01	6,428.3	5,280.6	-932.7	5,244.5	3.69	
11,934.0	90.47	337.13	337.13	6,426.7	5,367.8	-967.8	5,338.5	2.25	
12,028.0	90.70	336.78	336.78	6,425.8	5,454.3	-1,004.6	5,432.5	0.45	
12,119.0	93.09	337.02	337.02	6,422.7	5,537.9	-1,040.3	5,523.4	2.64	
12,210.0	91.44	338.37	338.37	6,419.2	5,622.0	-1,074.8	5,614.3	2.34	
12,301.0	89.09	339.16	339.16	6,418.7	5,706.9	-1,107.7	5,705.3	2.72	
12,392.0	90.57	339.23	339.23	6,419.0	5,791.9	-1,140.0	5,796.3	1.63	
12,482.0	91.68	339.05	339.05	6,417.2	5,876.0	-1,172.1	5,886.2	1.25	
12,573.0	91.44	338.83	338.83	6,414.8	5,960.9	-1,204.8	5,977.2	0.36	
12,663.0	91.11	338.36	338.36	6,412.8	6,044.7	-1,237.6	6,067.2	0.64	
12,753.0	89.90	337.69	337.69	6,412.0	6,128.1	-1,271.3	6,157.1	1.54	
12,844.0	89.63	337.09	337.09	6,412.3	6,212.1	-1,306.3	6,248.1	0.72	
12,935.0	91.55	337.09	337.09	6,411.4	6,295.9	-1,341.7	6,339.1	2.11	
13,025.0	90.13	338.42	338.42	6,410.1	6,379.2	-1,375.8	6,429.1	2.16	
13,116.0	90.80	338.72	338.72	6,409.3	6,463.9	-1,409.0	6,520.1	0.81	
13,210.0	90.57	337.68	337.68	6,408.2	6,551.2	-1,443.9	6,614.1	1.13	
13,304.0	89.23	337.47	337.47	6,408.4	6,638.1	-1,479.8	6,708.1	1.44	
13,398.0	90.23	337.44	337.44	6,408.8	6,724.9	-1,515.8	6,802.1	1.06	
13,493.0	89.23	336.18	336.18	6,409.3	6,812.2	-1,553.2	6,897.1	1.69	
13,587.0	89.56	336.10	336.10	6,410.3	6,898.2	-1,591.2	6,991.0	0.36	
13,681.0	90.84	339.02	339.02	6,409.9	6,985.1	-1,627.1	7,085.0	3.39	
13,775.0	91.61	339.42	339.42	6,407.9	7,072.9	-1,660.5	7,178.9	0.92	
13,869.0	90.87	339.84	339.84	6,405.9	7,161.0	-1,693.2	7,272.9	0.91	
13,963.0	91.51	339.33	339.33	6,403.9	7,249.1	-1,726.0	7,366.8	0.87	
14,057.0	90.07	339.17	339.17	6,402.6	7,337.0	-1,759.3	7,460.8	1.54	
14,151.0	90.57	339.67	339.67	6,402.1	7,425.0	-1,792.3	7,554.8	0.75	
14,245.0	91.31	339.59	339.59	6,400.6	7,513.1	-1,825.0	7,648.7	0.79	
14,339.0	89.76	339.61	339.61	6,399.7	7,601.2	-1,857.8	7,742.7	1.65	
14,433.0	89.30	338.78	338.78	6,400.5	7,689.1	-1,891.2	7,836.6	1.01	
14,527.0	89.03	338.39	338.39	6,401.8	7,776.6	-1,925.5	7,930.6	0.50	
14,621.0	88.62	337.88	337.88	6,403.8	7,863.8	-1,960.5	8,024.6	0.70	
14,716.0	90.67	337.98	337.98	6,404.4	7,951.8	-1,996.2	8,119.6	2.16	
14,810.0	91.18	335.24	335.24	6,402.8	8,038.1	-2,033.5	8,213.5	2.96	
14,903.0	90.81	336.20	336.20	6,401.2	8,122.8	-2,071.7	8,306.5	1.11	
14,997.0	91.88	334.95	334.95	6,399.0	8,208.4	-2,110.6	8,400.3	1.75	
15,091.0	90.50	337.31	337.31	6,397.1	8,294.3	-2,148.6	8,494.3	2.91	
15,185.0	91.25	337.71	337.71	6,395.6	8,381.2	-2,184.5	8,588.3	0.90	
15,278.0	87.08	338.32	338.32	6,397.0	8,467.4	-2,219.4	8,681.2	4.53	
15,372.0	89.76	338.05	338.05	6,399.6	8,554.6	-2,254.3	8,775.2	2.87	
15,466.0	90.74	337.50	337.50	6,399.2	8,641.6	-2,289.2	8,869.2	1.20	
15,560.0	88.29	337.42	337.42	6,400.0	8,728.4	-2,325.8	8,963.2	2.61	

85-10157



EOW Completion Report



Company:	Antero	Local Co-ordinate Reference:	Well Bow Unit 2H
Project:	Ritchie County WV	TVD Reference:	Patterson 325: GL 1118' + KB 24' @ 1142.0usft
Site:	Charlene Pad: Hendershot/Paige/Eppard/Brook/E	MD Reference:	Patterson 325: GL 1118' + KB 24' @ 1142.0usft
Well:	Bow Unit 2H	North Reference:	Grid
Wellbore:	Original Wellpath	Survey Calculation Method:	Minimum Curvature
Design:	As Drilled	Database:	Oklahoma District

Survey

MD (usft)	Inc (°)	Azi (azimuth) (°)	TVD (usft)	N/S (usft)	E/W (usft)	V. Sec (usft)	DLeg (°/100usft)
15,653.0	89.87	337.98	6,401.5	8,814.5	-2,361.1	9,056.1	1.80
15,747.0	90.10	338.45	6,401.5	8,901.7	-2,396.0	9,150.1	0.56
15,841.0	91.24	338.48	6,400.4	8,989.2	-2,430.5	9,244.1	1.21
15,935.0	90.13	337.78	6,399.3	9,076.4	-2,465.5	9,338.1	1.40
16,028.0	90.34	337.51	6,398.9	9,162.4	-2,500.9	9,431.1	0.37
16,122.0	90.34	339.11	6,398.3	9,249.7	-2,535.6	9,525.1	1.70
16,217.0	89.70	339.44	6,398.3	9,338.6	-2,569.3	9,620.1	0.76
16,311.0	88.39	339.14	6,399.8	9,426.5	-2,602.5	9,714.0	1.43
16,405.0	89.83	338.83	6,401.3	9,514.2	-2,636.2	9,808.0	1.57
16,500.0	89.40	338.05	6,401.9	9,602.6	-2,671.1	9,903.0	0.94
16,594.0	91.11	338.06	6,401.5	9,689.8	-2,706.2	9,997.0	1.82
16,688.0	90.67	336.20	6,400.1	9,776.4	-2,742.8	10,091.0	2.03
16,735.0	91.48	335.71	6,399.2	9,819.3	-2,761.9	10,137.9	2.01
16,792.0	91.48	335.71	6,397.7	9,871.2	-2,785.4	10,194.9	0.00

PTB

Design Annotations

Measured Depth (usft)	Vertical Depth (usft)	Local Coordinates		Comment
		+N/-S (usft)	+E/-W (usft)	
6,729.0	6,343.9	576.6	1,032.4	Burkett
6,813.0	6,370.7	643.2	988.8	Tully
6,891.0	6,389.2	705.9	946.4	Marcellus
16,792.0	6,397.7	9,871.2	-2,785.4	PTB

Checked By: _____ Approved By: _____ Date: _____

RECEIVED
Office of Oil and Gas

AUG 10 2015

WV Department of
Environmental Protection

Hydraulic Fracturing Fluid Product Component Information Disclosure

Job Start Date:	5/9/2015
Job End Date:	5/21/2015
State:	West Virginia
County:	Ritchie
API Number:	47-085-10157-00-00
Operator Name:	Antero Resources Corporation
Well Name and Number:	Bow Unit 2H
Longitude:	-80.96363100
Latitude:	39.29976100
Datum:	NAD83
Federal/Tribal Well:	NO
True Vertical Depth:	6,428
Total Base Water Volume (gal):	13,911,436
Total Base Non Water Volume:	583,355



85-10157

Hydraulic Fracturing Fluid Composition:

Trade Name	Supplier	Purpose	Ingredients	Chemical Abstract Service Number (CAS #)	Maximum Ingredient Concentration in Additive (% by mass)**	Maximum Ingredient Concentration in HF Fluid (% by mass)**	Comments
Water	Antero Resources	Carrier/Base Fluid	Water	7732-18-5	100.00000	90.93800	
Sand	U.S. Well Services	Proppant	Crystalline Silica, quartz	14808-60-7	100.00000	8.54600	
HCL Acid (12.6%-18.0%)	U.S. Well Services	Bulk Acid	Water	7732-18-5	87.50000	0.16416	
			Hydrogen Chloride	7647-01-1	18.00000	0.03917	
LGC-15	U.S. Well Services	Gelling Agents	Hydrated light distillate (petroleum)	64742-47-8	65.00000	0.09509	
			Guar gum	9000-30-0	50.00000	0.09098	
			Nonylphenol ethoxylated	127087-87-0	5.00000	0.00954	
WFRA-405	U.S. Well Services	Friction Reducer	Anionic Polyacrylamide	Proprietary	40.00000	0.02824	
			Water	7732-18-5	40.00000	0.02824	
			Sodium Chloride	7647-14-5	20.00000	0.01412	
			Petroleum Distillates	64742-47-8	20.00000	0.01137	
			Ethoxylated alcohol blend	Proprietary	5.00000	0.00353	
SI-1100	U.S. Well Services	Scale Inhibitor					

WV Department of Environmental Protection
 RECEIVED
 Office of Oil and Gas
 JUN 10 2015

85-10157

			Water	7732-18-5	80.00000	0.00988
			Ethylene Glycol	107-21-1	25.00000	0.00349
			Copolymer of Maleic and Acrylic acid	26677-99-6	10.00000	0.00146
			Potassium salt of diethylene triamine penta (methylene phosphonic acid)	15827-60-8	7.50000	0.00125
			Phosphino carboxylic acid polymer	71050-62-9	5.00000	0.00080
			Hexamethylene tramine penta (methylene phosphonic acid)	34690-00-1	5.00000	0.00080
			Hexamethylene diamine penta (methylene phosphonic acid)	23605-74-5	2.00000	0.00032
K-BAC 1020	U.S. Well Services	Anti-Bacterial Agent				
			Polyethylene Glycol	25322-68-3	50.00000	0.00456
			2,2-dibromo-3-nitrilopropionamide	10222-01-2	20.00000	0.00399
			Deionized Water	7732-18-5	30.00000	0.00244
AP One	U.S. Well Services	Gel Breakers				
			Ammonium Persulfate	7727-54-0	100.00000	0.00223
AI-301	U.S. Well Services	Acid Corrosion Inhibitors				
			Diethylene Glycol	111-46-6	30.00000	0.00013
			Methenamine	100-97-0	20.00000	0.00010
			Polyethylene polyamine	68603-67-8	10.00000	0.00004
			Hydrogen Chloride	7647-01-0	10.00000	0.00004
			Coco amine	61791-14-8	5.00000	0.00002

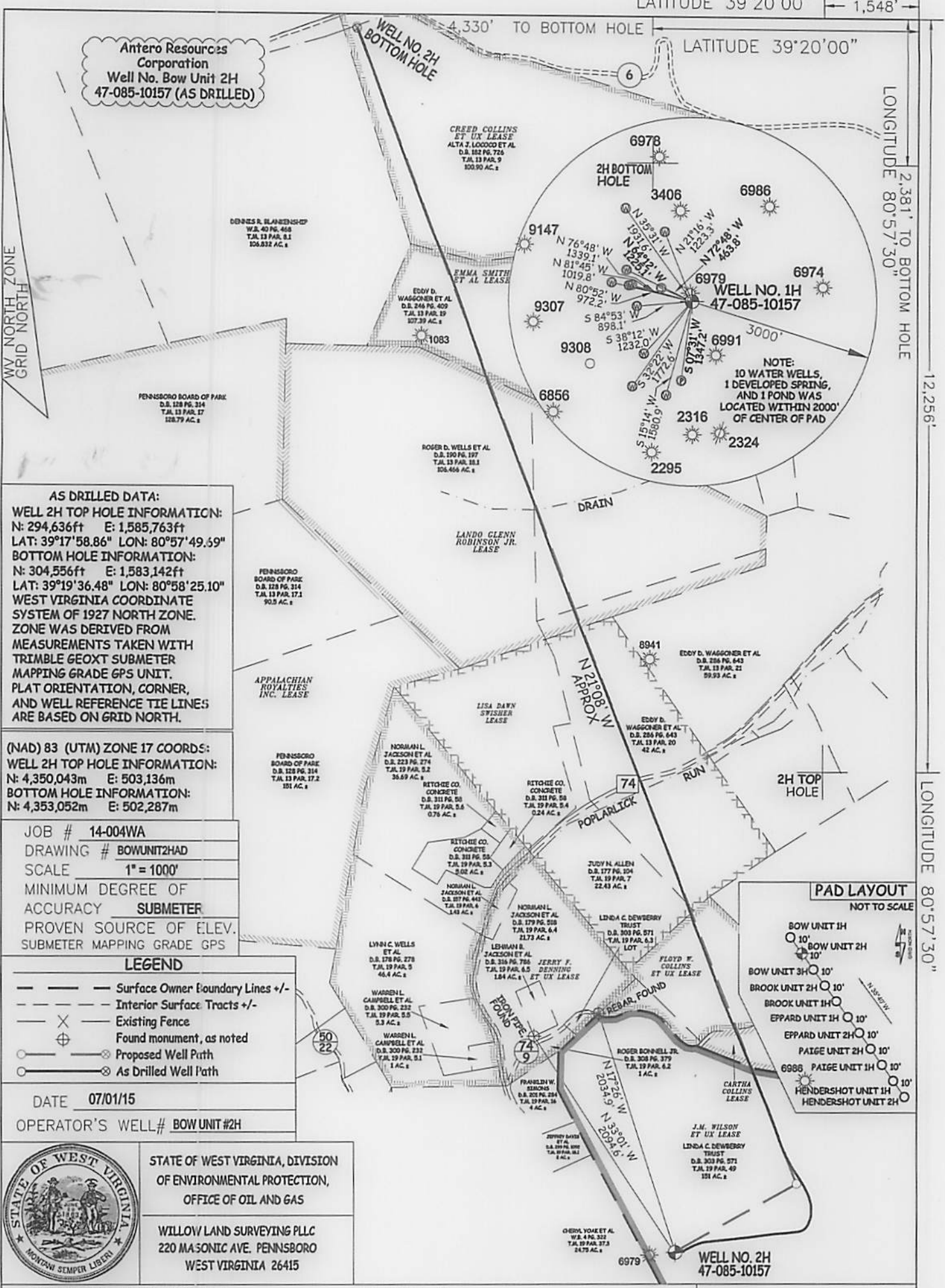
Ingredients shown above are subject to 29 CFR 1910.1200(i) and appear on Material Safety Data Sheets (MSDS). Ingredients shown below are Non-MSDS.

- * Total Water Volume sources may include fresh water, produced water, and/or recycled water
- ** Information is based on the maximum potential for concentration and thus the total may be over 100%

Note: For Field Development Products (products that begin with FDP), MSDS level only information has been provided. Ingredient information for chemicals subject to 29 CFR 1910.1200(i) and Appendix D are obtained from suppliers Material Safety Data Sheets (MSDS)

RECEIVED
 Office of Oil and Gas
 AUG 10 2015
 WV Department of
 Environmental Protection

LATITUDE 39°20'00" | 1,548'



Antero Resources Corporation
Well No. Bow Unit 2H
47-085-10157 (AS DRILLED)

LATITUDE 39°20'00"

LONGITUDE 80°57'30"

LONGITUDE 80°57'30"

AS DRILLED DATA:
WELL 2H TOP HOLE INFORMATION:
 N: 294,636ft E: 1,585,763ft
 LAT: 39°17'58.86" LON: 80°57'49.59"
BOTTOM HOLE INFORMATION:
 N: 304,556ft E: 1,583,142ft
 LAT: 39°19'36.48" LON: 80°58'25.10"
 WEST VIRGINIA COORDINATE SYSTEM OF 1927 NORTH ZONE. ZONE WAS DERIVED FROM MEASUREMENTS TAKEN WITH TRIMBLE GEOXT SUBMETER MAPPING GRADE GPS UNIT. PLAT ORIENTATION, CORNER, AND WELL REFERENCE TIE LINES ARE BASED ON GRID NORTH.

(NAD) 83 (UTM) ZONE 17 COORDS:
WELL 2H TOP HOLE INFORMATION:
 N: 4,350,043m E: 503,136m
BOTTOM HOLE INFORMATION:
 N: 4,353,052m E: 502,287m

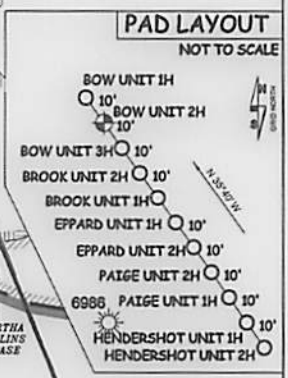
JOB # 14-004WA
 DRAWING # BOWUNIT2HAD
 SCALE 1" = 1000'
 MINIMUM DEGREE OF ACCURACY SUBMETER
 PROVEN SOURCE OF ELEV. SUBMETER MAPPING GRADE GPS

LEGEND
 - - - Surface Owner Boundary Lines +/-
 - - - Interior Surface Tracts +/-
 X Existing Fence
 ⊕ Found monument, as noted
 ⊙ Proposed Well Path
 ⊙ As Drilled Well Path

DATE 07/01/15
 OPERATOR'S WELL# BOW UNIT #2H



STATE OF WEST VIRGINIA, DIVISION OF ENVIRONMENTAL PROTECTION, OFFICE OF OIL AND GAS
 WILLOW LAND SURVEYING PLLC
 220 MAZONIC AVE. PENNSBORO WEST VIRGINIA 26415



STATE OF WEST VIRGINIA DEPARTMENT OF ENERGY DIVISION OF OIL AND GAS
 WELL TYPE: OIL GAS LIQUID INJECTION WASTE DISPOSAL
 (IF "GAS") PRODUCTION STORAGE DEEP SHALLOW
 LOCATION: ELEVATION 1124' - ORIGINAL 1,118' - AS DRILLED WATERSHED NORTH FORK HUGHES RIVER
 QUADRANGLE PENNSBORO 7.5' DISTRICT CLAY COUNTY RITCHIE
 SURFACE OWNER LINDA C. DEWBERRY TRUST ACREAGE 151 ACRES +/-
 OIL & GAS ROYALTY OWNER J.M. WILSON ET UX; CARTHA COLLINS; FLOYD W. COLLINS ET UX; LISA DAWN SWISHER; LANDO GLENN ROBINSON JR.; EMMA SMITH ET AL; CREED COLLINS ET UX;
 LEASE ACREAGE 700 AC±; 18 AC±; 26 AC±; 94 AC±; 130 AC±; 78 AC±; 104 AC±
 PROPOSED WORK: DRILL CONVERT DRILL DEEPER REDRILL FRACTURE OR STIMULATE
 PLUG OFF OLD FORMATION PERFORATE NEW FORMATION OTHER PHYSICAL CHANGE IN WELL (SPECIFY) AS DRILLED PLUG & ABANDON CLEAN OUT & REPLUG
 TARGET FORMATION MARCELLUS ESTIMATED DEPTH 6,397' TVD 16,792' MD
 WELL OPERATOR ANTERO RESOURCES CORP. DESIGNATED AGENT CT CORPORATION SYSTEM-DIANNA STAMPER
 ADDRESS 1615 WYNKOOP STREET ADDRESS 5400 D BIG TYLER ROAD
 FORM WW-6 DENVER, CO 80202 CHARLESTON, WV 25313

NOTE
 1. NO OCCUPIED DWELLINGS OR BUILDINGS TWO THOUSAND FIVE HUNDRED (2,500) SQUARE FEET OR LARGER USED TO HOUSE OR SHELTER CATTLE OR POULTRY OR HORSEBARNY ARE LOCATED WITHIN SIX HUNDRED TWENTY-FIVE (625) FEET OF THE CENTER OF THE WELL PAD.
 2. TOP HOLE DATA SHOWN HEREIN WAS PROVIDED BY ALLEGHENY SURVEYS, INC.
 3. AS DRILLED DATA WAS PROVIDED BY ANTERO RESOURCES CORPORATION.
 4. WLS IS NOT CERTIFYING THE DATA AND INFORMATION PROVIDED LISTED IN 1, 2, AND 3, ONLY THE RELATIONSHIP OF THE DATA AND INFORMATION PROVIDED TO THE LEASE BOUNDARIES.
 5. WLS IS BY NO MEANS RESPONSIBLE FOR ANY ERRORS OR INACCURACIES WITH THE DATA AND INFORMATION THAT HAS BEEN PROVIDED.

COUNTY NAME

PERMIT

10/23/2015