

7884'

LATITUDE 39 - 15 - 00

LONGITUDE 80 - 57 - 30

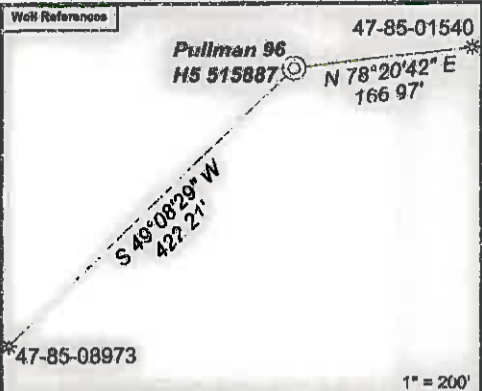
14242'

**WV 515887**  
**EQT Production Company**  
**Laurie Ann Haddox, et al**  
**360 Acres**

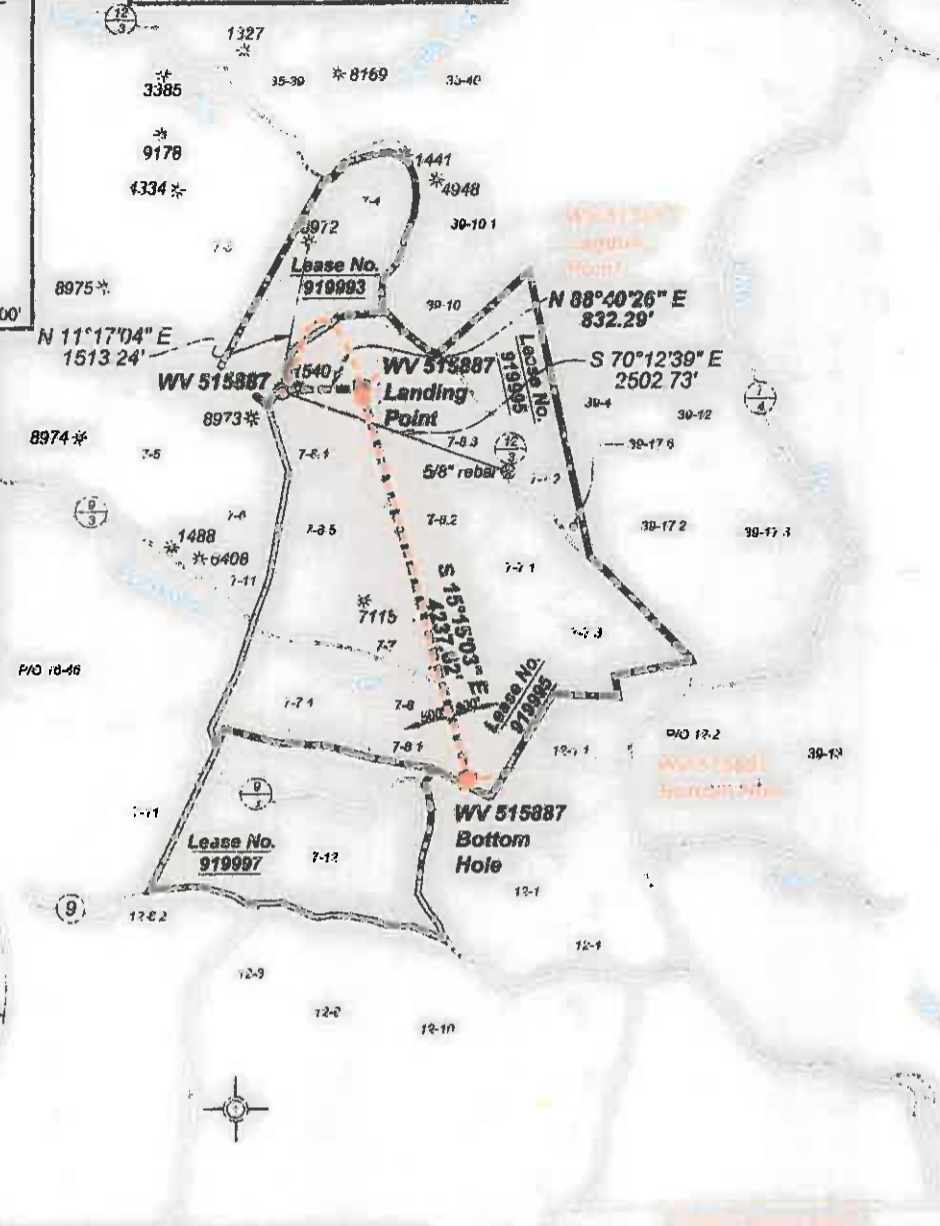
- Proposed Gas Well
- Located Corner, as noted
- Surface Tract Lines
- References Line
- Lease Boundary
- Creek or Drain
- WV County Route
- WV State Route

**Pullman 96**

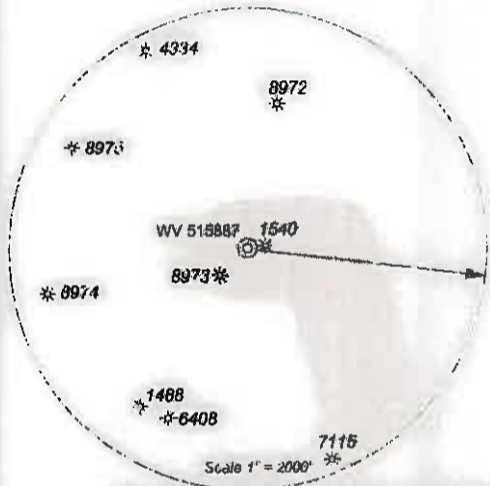
- H10, 515977
- H7, 515965
- H5, 515887
- H2, 515884



**As-Drilled Well Information**  
 WV 515887 coordinates are  
 NAD 27 N 262,419.41 E 1,578,899.99  
 NAD 83 UTM N 4,340,193.53 E 501,208.64  
 WV 515887 Landing Point coordinates are  
 NAD 27 N 262,363.76 E 1,579,741.63  
 NAD 83 UTM N 4,340,177.83 E 501,165.38  
 WV 515887 Bottom Hole coordinates are  
 NAD 27 N 258,347.76 E 1,580,840.20  
 NAD 83 UTM N 4,338,963.01 E 501,820.43  
 West Virginia Coordinate system of 1927 (North Zone)  
 Geographic coordinates are NAD27  
 UTM coordinates are NAD83, Zone 17, Meters  
 Plat orientation, corner and well ties are based upon  
 the grid north meridian  
 Well location references are based upon the grid north  
 meridian



GRID NORTH



( ) Denotes Location of Well on United States Topographic Maps



*I, the undersigned, hereby certify that this plat is correct to the best of my knowledge and belief and shows all the information required by law and the regulations issued and prescribed by the Department of Environmental Protection.*

*Laurie Ann Haddox*  
P.S. 2089SU

SEAL

FILE NO. 243-14  
 DRAWING NO. 243-14 Pullman 96 H5.dwg  
 SCALE. 1" = 2000'  
 MINIMUM DEGREE OF ACCURACY: 1.2500  
 PROVEN SOURCE OF ELEVATION: NGS CORS Station

**STATE OF WEST VIRGINIA**  
 DEPARTMENT OF ENVIRONMENTAL PROTECTION  
**OIL AND GAS DIVISION**

DATE April 13 20 16  
 OPERATOR'S WELL NO. 515887  
 API WELL NO  
47 - 85 - 10211  
 STATE COUNTY PERMIT

WELL TYPE  OIL  GAS  LIQUID INJECTION  WASTE DISPOSAL  
 (IF GAS) PRODUCTION  STORAGE  DEEP  SHALLOW  
 LOCATION: ELEVATION: Original 1194' Proposed 1182' WATERSHED Goose Run of Rookcamp Run QUADRANGLE: Pullman  
 DISTRICT: Union COUNTY: Ritchie  
 SURFACE OWNER: James H. & Wilma J. Wilson ACREAGE: 40.089  
 ROYALTY OWNER: Laurie Ann Haddox, et al LEASE NO.: 919995 ACREAGE: 360  
 PROPOSED WORK:  DRILL  CONVERT  DRILL DEEPER  FRACTURE OR STIMULATE  PLUG OFF OLD FORMATION  
 PERFORATE NEW FORMATION  OTHER PHYSICAL CHANGE IN WELL (SPECIFY) \_\_\_\_\_  
 PLUG AND ABANDON  CLEAN OUT AND REPLUG TARGET FORMATION: Marcellus ESTIMATED DEPTH: TVD 6,398

WELL OPERATOR EQT Production Company DESIGNATED AGENT: Rex C. Ray  
 ADDRESS: PO Box 280 / 115 Professional Place ADDRESS: PO Box 280 / 115 Professional Place  
Bridgeport, WV 26330 Bridgeport, WV 26330