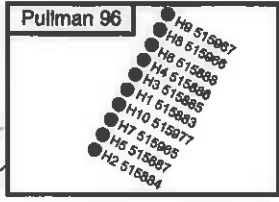


WV 515886
EQT Production Company
Laurie Ann Haddox, et al
360 Acres

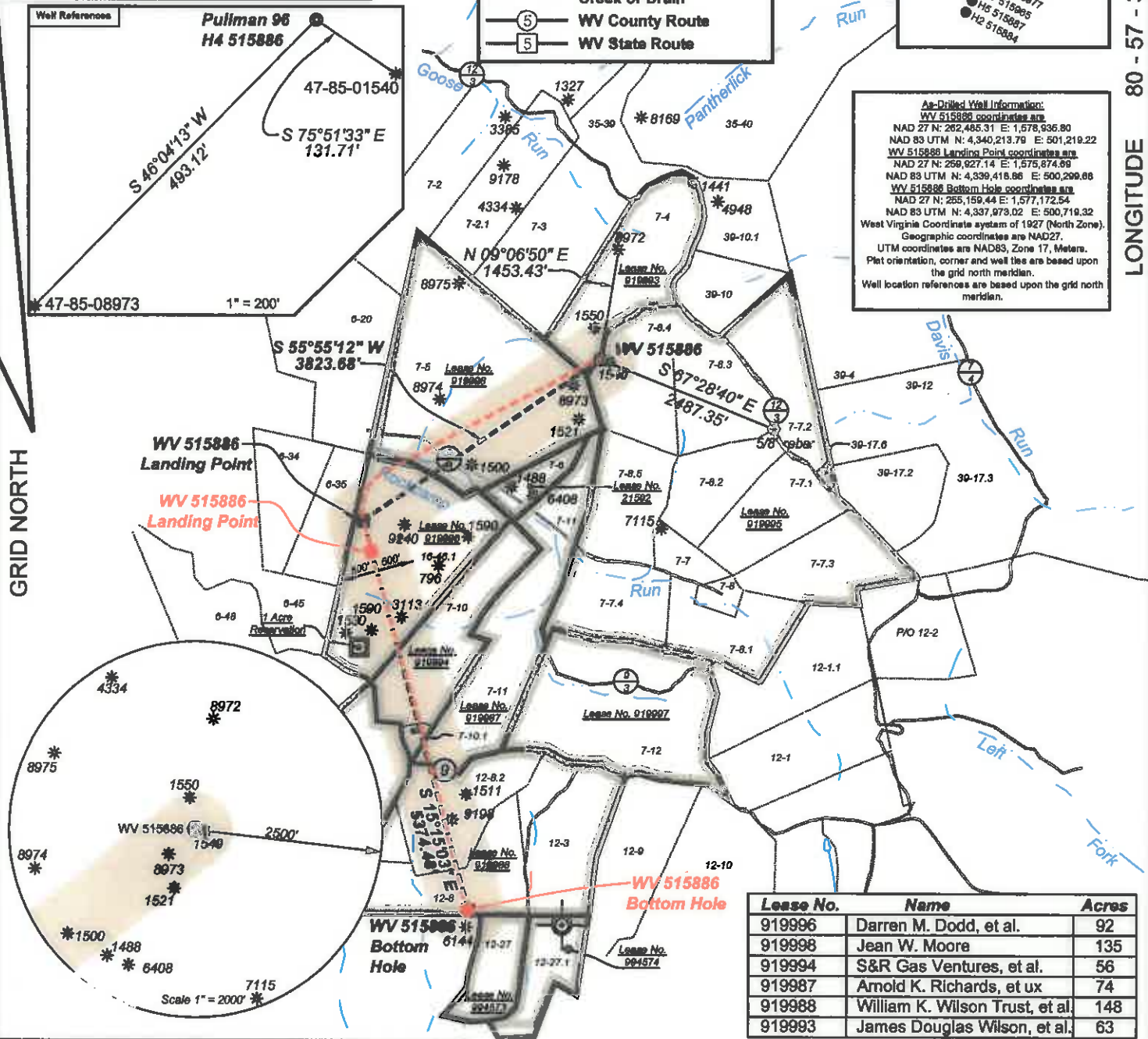
LATITUDE 39 - 15 - 00

- Proposed Gas Well
- Located Corner, as noted
- Surface Tract Lines
- Reference Line
- Lease Boundary
- Creek or Drain
- Ⓢ WV County Route
- Ⓢ WV State Route



As-Drilled Well Information:
 WV 515886 coordinates are
 NAD 27 N: 262,483.31 E: 1,578,935.80
 NAD 83 UTM N: 4,340,213.79 E: 501,219.22
 WV 515886 Landing Point coordinates are
 NAD 27 N: 269,927.14 E: 1,575,874.69
 NAD 83 UTM N: 4,339,418.86 E: 500,299.68
 WV 515886 Bottom Hole coordinates are
 NAD 27 N: 265,159.44 E: 1,577,172.54
 NAD 83 UTM N: 4,337,978.02 E: 500,719.32
 West Virginia Coordinate system of 1927 (North Zone).
 Geographic coordinates are NAD27.
 UTM coordinates are NAD83, Zone 17, Meters.
 Plat orientation, corner and well ties are based upon
 the grid north meridian.
 Well location references are based upon the grid north
 meridian.

LONGITUDE 80 - 57 - 30



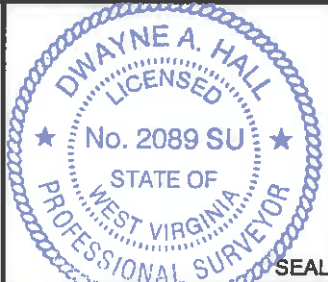
Lease No.	Name	Acres
919996	Darren M. Dodd, et al.	92
919998	Jean W. Moore	135
919994	S&R Gas Ventures, et al.	56
919987	Arnold K. Richards, et ux	74
919988	William K. Wilson Trust, et al	148
919993	James Douglas Wilson, et al.	63

(Ⓢ) Denotes Location of Well on United States Topographic Maps



I, the undersigned, hereby certify that this plat is correct to the best of my knowledge and belief and shows all the information required by law and the regulations issued and prescribed by the Department of Environmental Protection.

Dwayne A. Hall
 P.S. 2089SU



FILE NO: 243-14
 DRAWING NO: 243-14 Pullman 96 H4.dwg
 SCALE: 1" = 2000'
 MINIMUM DEGREE OF ACCURACY: 1:2500
 PROVEN SOURCE OF ELEVATION: NGS CORS Station

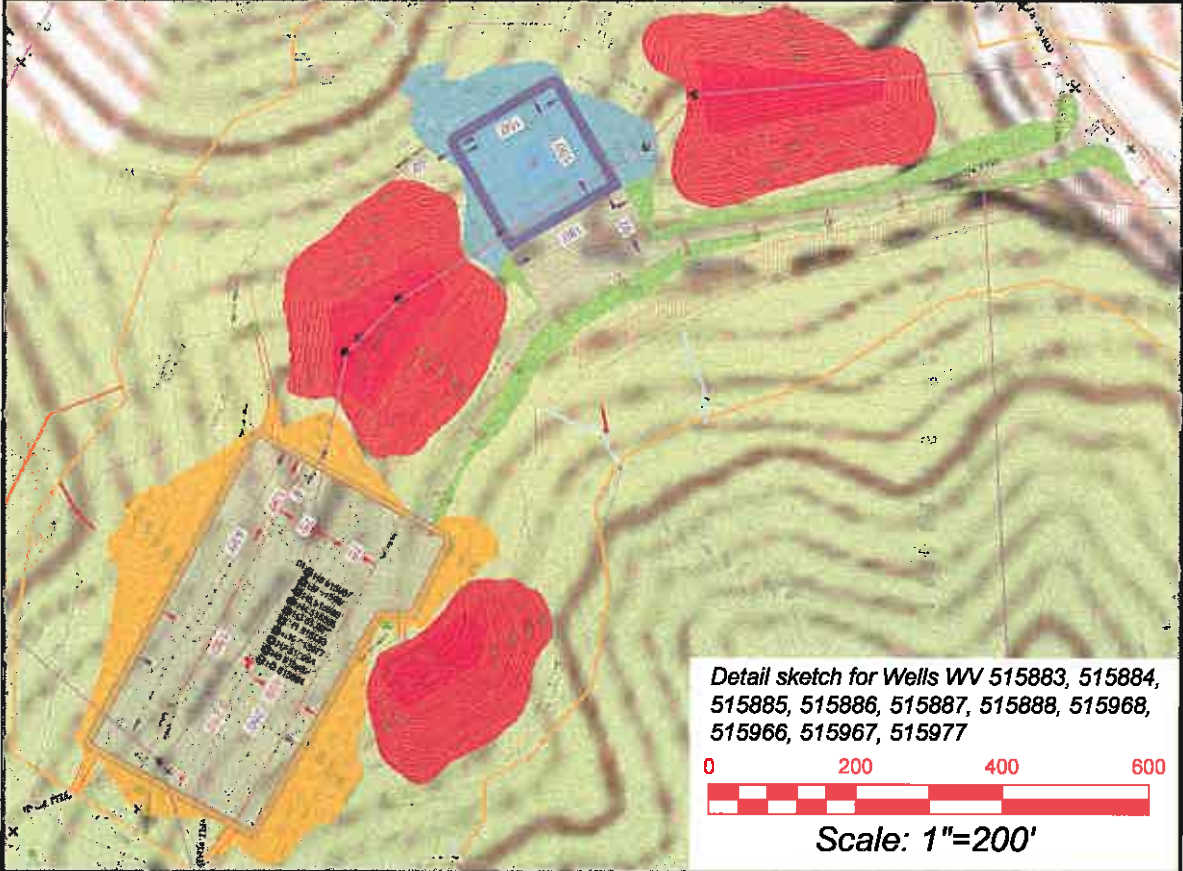
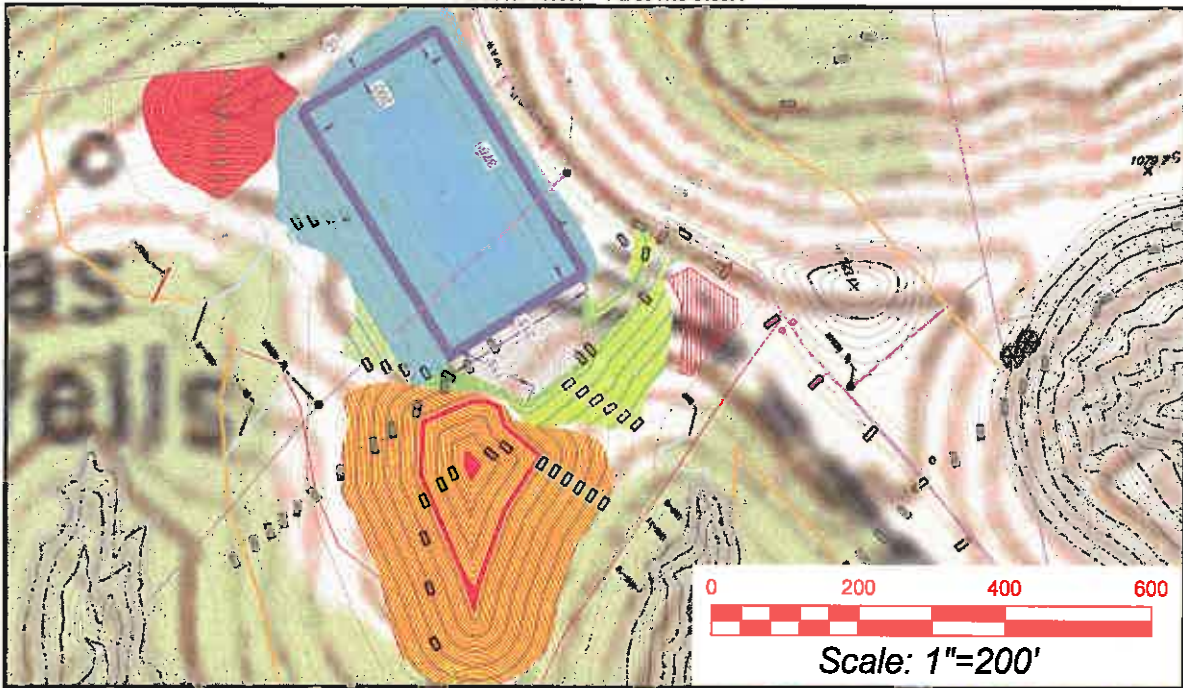
STATE OF WEST VIRGINIA
 DEPARTMENT OF ENVIRONMENTAL PROTECTION
OIL AND GAS DIVISION

DATE: May 18 20 16
 OPERATOR'S WELL NO. 515886
 API WELL NO
 47 - 85 - 0217
 STATE COUNTY PERMIT

WELL TYPE: OIL GAS LIQUID INJECTION WASTE DISPOSAL
 (IF GAS) PRODUCTION: STORAGE DEEP SHALLOW
 LOCATION: ELEVATION: As Built: 1182.8' WATERSHED: Goose Run of Rockcamp Run QUADRANGLE: Pullman
 DISTRICT: Union COUNTY: Ritchie
 SURFACE OWNER: James H. & Wilma J. Wilson ACREAGE: 360.069
 ROYALTY OWNER: Laurie Ann Haddox, et al LEASE NO: 919995 ACREAGE: 360
 PROPOSED WORK: DRILL CONVERT DRILL DEEPER FRACTURE OR STIMULATE PLUG OFF OLD FORMATION
 PERFORATE NEW FORMATION OTHER PHYSICAL CHANGE IN WELL (SPECIFY)
 PLUG AND ABANDON CLEAN OUT AND REPLUG TARGET FORMATION: Marcellus ESTIMATED DEPTH: TVD 6,398

WELL OPERATOR: EQT Production Company DESIGNATED AGENT: Rex C. Ray
 ADDRESS: PO Box 280 / 115 Professional Place ADDRESS: PO Box 280 / 115 Professional Place
 Bridgeport, WV 26330 Bridgeport, WV 26330

01/27/2017



Detail sketch for Wells WV 515883, 515884, 515885, 515886, 515887, 515888, 515968, 515966, 515967, 515977

Pullman 7.5' USGS QUADRANGLE		Proposed Disturbance Area		Note: SEE SITE PLAN OF PULLMAN 96 FOR COMPLETE GRADING & DRAINAGE CONSTRUCTION INCLUDING EROSION & SEDIMENT CONTROL DETAILS, ETC. RECEIVED Office of Oil and Gas MAY 20 2016 WV Department of Environmental Protection
Projected culvert inventory. (for bid purposes only)		Well Site Location	See Site Plan	
15" minimum diameter culverts	See Site Plan	Proposed Access Road	See Site Plan	
24" minimum diameter culverts	See Site Plan	Approximate Total Disturbance	See Site Plan	
DRAWN BY: Dwayne A. Hall, PS	DATE: April 11, 2016	FILE NO. 243-14	DRAWING FILE NO. 243-14 Rec Plan	
SURVEYING AND MAPPING SERVICES PERFORMED BY: ALLEGHENY SURVEYS, INC. 1-800-482-8606 Birch River Office 237 Birch River Road Phone: (304) 649-8606 P.O. Box 438 Fax: (304) 649-8608 Birch River, WV 26610				

