

LATITUDE 39°20'00" 1,524'

11,558' TO BOTTOM HOLE

LATITUDE 39°17'30"

LONGITUDE 80°55'00"

3,964' TO BOTTOM HOLE

12,289'

LONGITUDE 80°57'30"

Antero Resources Corporation Well No. Eppard Unit 1H

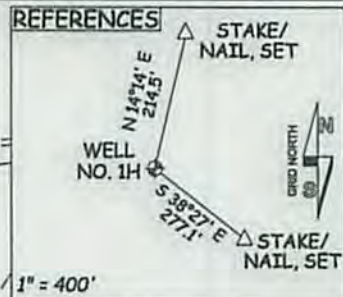
J.M. WILSON
ET UX LEASE

LINDA C. DEWBERRY TRUST
D.B. 201 PG. 571
TAL 19 PAR. 49
151 AC. ±

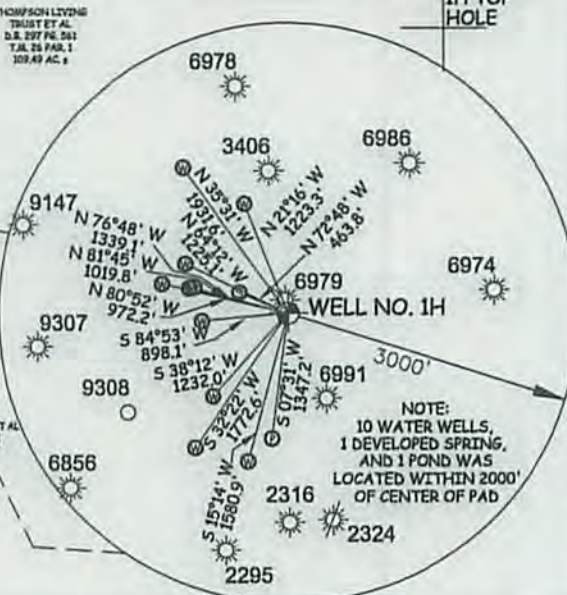
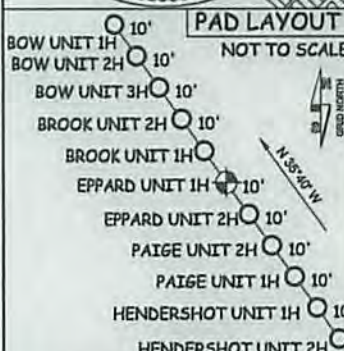
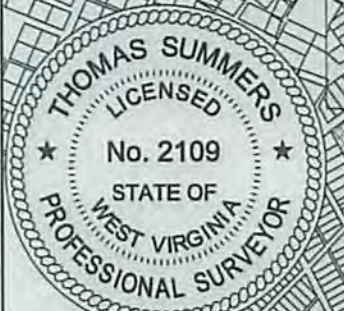
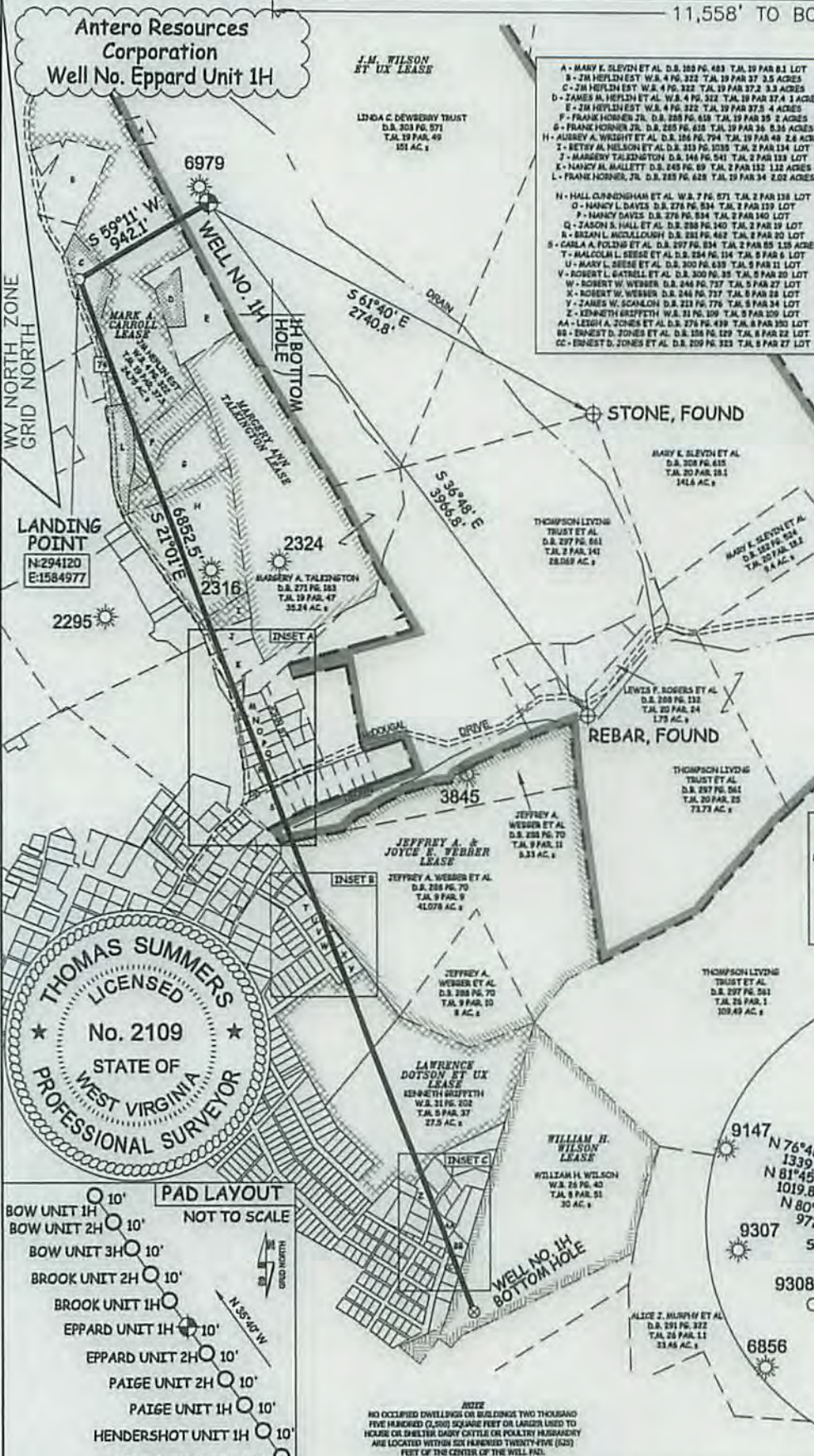
- A - MARY E. SLEVIN ET AL. D.B. 105 PG. 483 T.M. 19 PAR. 83 LOT 8 - 2M HEPLIN EST. W.B. 4 PG. 322 T.M. 19 PAR. 37.5 ACRES
- C - 2M HEPLIN EST. W.B. 4 PG. 322 T.M. 19 PAR. 37.5 ACRES
- D - JAMES H. HEPLIN ET AL. W.B. 4 PG. 322 T.M. 19 PAR. 37.5 ACRES
- E - 2M HEPLIN EST. W.B. 4 PG. 322 T.M. 19 PAR. 37.5 ACRES
- F - FRANK HORNOR, JR. D.B. 205 PG. 618 T.M. 19 PAR. 35 ACRES
- G - FRANK HORNOR, JR. D.B. 205 PG. 618 T.M. 19 PAR. 35 ACRES
- H - AUBREY A. WRIGHT ET AL. D.B. 156 PG. 774 T.M. 19 PAR. 49 ACRES
- I - BETSY A. HILSON ET AL. D.B. 313 PG. 1030 T.M. 2 PAR. 134 LOT 7 - MARGERY TALENIGHTON D.B. 146 PG. 541 T.M. 2 PAR. 123 LOT 7 - MARGERY A. WALLETT D.B. 245 PG. 69 T.M. 2 PAR. 123 ACRES
- L - FRANK HORNOR, JR. D.B. 205 PG. 618 T.M. 19 PAR. 34 ACRES
- N - HALL CARRONSHAM ET AL. W.B. 7 PG. 571 T.M. 2 PAR. 135 LOT 0 - MARY L. DAVIS D.B. 276 PG. 534 T.M. 2 PAR. 129 LOT 0 - MARY L. DAVIS D.B. 276 PG. 534 T.M. 2 PAR. 140 LOT 0 - JASON S. HALL ET AL. D.B. 285 PG. 140 T.M. 2 PAR. 19 LOT 0 - BILAN L. MCDONOUGH D.B. 281 PG. 462 T.M. 2 PAR. 10 LOT 0 - CARLA A. POLK AND ET AL. D.B. 297 PG. 834 T.M. 2 PAR. 55 ACRES
- T - MALCOLM L. SEESE ET AL. D.B. 284 PG. 194 T.M. 2 PAR. 6 LOT 0 - MARY L. SEESE ET AL. D.B. 300 PG. 639 T.M. 2 PAR. 11 LOT 0 - ROBERT L. GATRELL ET AL. D.B. 300 PG. 35 T.M. 2 PAR. 20 LOT 0 - ROBERT W. WESSER D.B. 244 PG. 737 T.M. 2 PAR. 27 LOT 0 - ROBERT W. WESSER D.B. 244 PG. 737 T.M. 2 PAR. 28 LOT 0 - JAMES W. SCANLON D.B. 213 PG. 776 T.M. 2 PAR. 34 LOT 0 - KENNETH GRIFFITH W.B. 31 PG. 202 T.M. 9 PAR. 100 LOT 0 - LEIGH A. JONES ET AL. D.B. 276 PG. 439 T.M. 2 PAR. 100 LOT 80 - ERNEST D. JONES ET AL. D.B. 126 PG. 129 T.M. 2 PAR. 22 LOT 0 - ERNEST D. JONES ET AL. D.B. 209 PG. 323 T.M. 2 PAR. 27 LOT 0

NOTES:
WELL 1H TOP HOLE INFORMATION:
N: 294,603ft E: 1,585,787ft
LAT: 39°17'58.54" LON: 80°57'49.39"
BOTTOM HOLE INFORMATION:
N: 287,724ft E: 1,587,436ft
LAT: 39°16'50.82" LON: 80°57'26.99"
WEST VIRGINIA COORDINATE SYSTEM OF 1927 NORTH ZONE. ZONE WAS DERIVED FROM MEASUREMENTS TAKEN WITH TRIMBLE GEOXT SUBMETER MAPPING GRADE GPS UNIT. PLAT ORIENTATION, CORNER, AND WELL REFERENCE TIE LINES ARE BASED ON GRID NORTH.

(NAD) 83 (UTM) ZONE 17 COORDS:
WELL 1H TOP HOLE INFORMATION:
N: 4,350,033m E: 503,143m
BOTTOM HOLE INFORMATION:
N: 4,347,946m E: 503,680m



- LEASE INFORMATION**
- C - AUBREY A. WRIGHT ET AL. 13 ACRES
 - F - FRANK HORNOR, JR. 2 ACRES
 - G - FRANK HORNOR, JR. 2.56 ACRES
 - H - BURGESS H. BURNING ET AL. 2.8 ACRES
 - I - J.M. WILSON 700 ACRES
 - J - J.M. WILSON 700 ACRES
 - K - J.M. WILSON 700 ACRES
 - L - FRANK HORNOR, JR. 2,354 ACRES
 - M - J.M. WILSON 700 ACRES
 - N - J.M. WILSON 700 ACRES
 - O - J.M. WILSON 700 ACRES
 - P - J.M. WILSON 700 ACRES
 - Q - J.M. WILSON 700 ACRES
 - R - BILAN L. MCDONOUGH 0.338 ACRES
 - S - CARLA A. POLK AND 1.833 ACRES
 - T - MALCOLM L. SEESE ET UX 1.122 ACRES
 - U - MARY LUY SEESE 0.225 ACRES
 - V - CLAYTON M. STONKARD 0.313 ACRES
 - W - DUANE COX 120 ACRES
 - X - DUANE COX 120 ACRES
 - Y - JAMES W. SCANLON 0.466 ACRES
 - Z - MARGERY TALENIGHTON 0.524 ACRES
 - AA - CONSUELA VINCENT 0.817 ACRES
 - BB - ERNEST D. JONES ET UX 0.934 ACRES
 - CC - WILLIAM J. BRITTON ET UX 0.5 ACRES
 - DD - CITY OF PENNSBORO 0.620 ACRES



JOB # 14-121WA
DRAWING # EPPARD1H
SCALE 1" = 1000'

MINIMUM DEGREE OF ACCURACY SUBMETER
PROVEN SOURCE OF ELEV. SUBMETER MAPPING GRADE GPS

STATE OF WEST VIRGINIA DEPARTMENT OF ENERGY DIVISION OF OIL AND GAS

WELL TYPE: OIL GAS X LIQUID INJECTION WASTE DISPOSAL
(IF "GAS") PRODUCTION X STORAGE DEEP SHALLOW X

LOCATION: ELEVATION 1,124' ORIGINAL - 1,118' PROPOSED WATERSHED NORTH FORK HUGHES RIVER
QUADRANGLE PENNSBORO 7.5' DISTRICT CLAY COUNTY RITCHIE

SURFACE OWNER LINDA C. DEWBERRY TRUST ACREAGE 151 ACRES +/-
OIL & GAS ROYALTY OWNER SEE LEASE INFORMATION ABOVE LEASE ACREAGE SEE LEASE INFORMATION ABOVE

PROPOSED WORK: DRILL X CONVERT DRILL DEEPER REDRILL FRACTURE OR STIMULATE X
PLUG OFF OLD FORMATION PERFORATE NEW FORMATION X OTHER PHYSICAL CHANGE IN WELL
(SPECIFY) PLUG & ABANDON CLEAN OUT & REPLUG
TARGET FORMATION MARCELLUS ESTIMATED DEPTH 6,700' TVD 14,500' MD

WELL OPERATOR ANTERO RESOURCES CORP. DESIGNATED AGENT DIANNA STAMPER
ADDRESS 1615 WYNKOOP STREET ADDRESS 5400 D BIG TYLER ROAD
DENVER, CO 80202 CHARLESTON, WV 25313

I THE UNDERSIGNED, HEREBY CERTIFY THAT THIS PLAT IS CORRECT TO THE BEST OF MY KNOWLEDGE AND BELIEF AND SHOWS ALL THE INFORMATION REQUIRED BY LAW AND THE RULES ISSUED AND PERSCRIBED BY THE DEPARTMENT OF ENVIRONMENTAL PROTECTION.



STATE OF WEST VIRGINIA, DIVISION OF ENVIRONMENTAL PROTECTION, OFFICE OF OIL AND GAS

WILLOW LAND SURVEYING PLLC
266 HUSHERS RUN RD PENNSBORO WEST VIRGINIA 26415

LEGEND
--- Surface Owner Boundary Lines +/-
--- Interior Surface Tracts +/-
X Existing Fence
⊕ Rebar, Found

THOMAS SUMMERS P.S. 2109

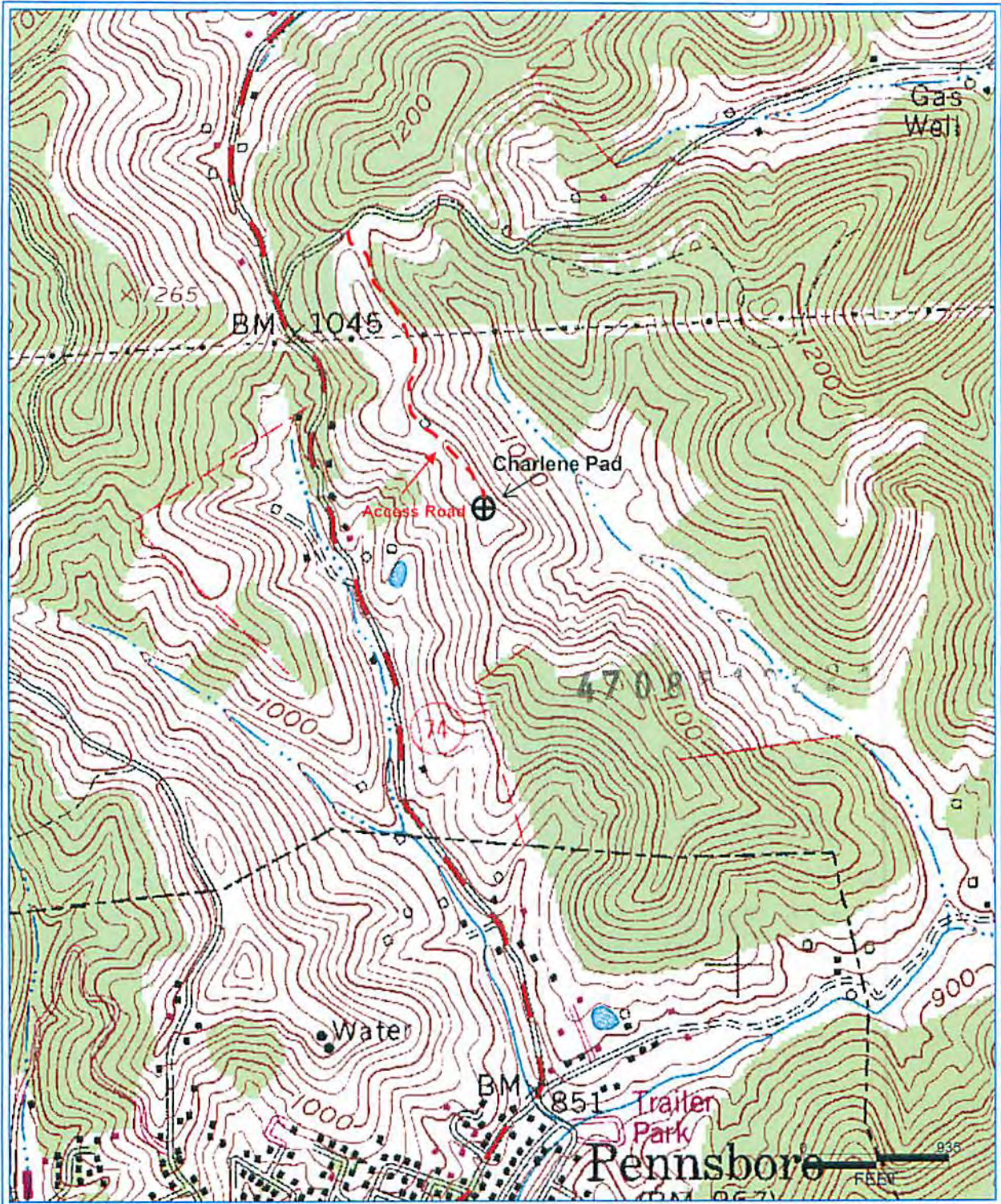
DATE 06/01/15
OPERATOR'S WELL # EPPARD UNIT #H

API WELL # 47 - 085 - 10221
STATE COUNTY PERMIT

DATE 06/01/15
OPERATOR'S WELL # EPPARD UNIT #H

API WELL # 47 - 085 - 10221
STATE COUNTY PERMIT

DIANNA STAMPER
CT CORPORATION SYSTEM
5400 D BIG TYLER ROAD
CHARLESTON, WV 25313



PETRA BR/2013 10:40:01 AM

RECEIVED
Office of Oil and Gas
JUN 04 2015
WV Department of
Environmental Protection

Antero Resources Corporation
Appalachian Basin
Eppard Unit 1H
Ritchie County

Quadrangle: Pennsboro
Watershed: North Fork Hughes River
District: Clay
Date: 8-6-2013

07/17/2015