



ANTERO RESOURCES CORPORATION

Location: Ritchie County, WV
 Field: Ritchie
 Facility: Husher Pad

Slot: Slot A
 Well: Neptune Unit 1H
 Wellbore: Neptune Unit 1H PWB

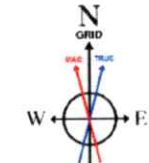
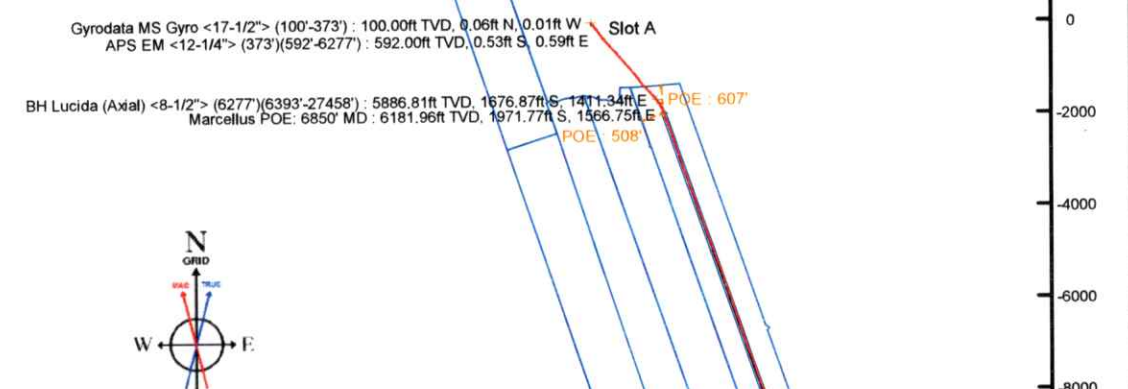
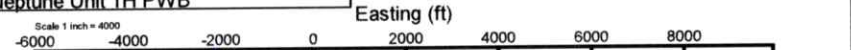


Plot reference wellpath is Neptune Unit 1HPWP Rev-B.0	Grid System: NAD27 / UTM Zone 17 North, US feet
True vertical depths are referenced to H&P 519 (RKB)	North Reference: Grid north
Reference wellpath measured depths are referenced to H&P 519 (RKB)	Scale: True distance
H&P 519 (RKB) to Mean Sea Level: 1037 feet	Coordinates are in feet referenced to Slot
Mean Sea Level to Ground level (At Slot: Slot A): -1007 feet	Depths are in feet
Offset wellpath MDs are referenced to each path's default MD datum	Created by: edharyar on 2025-04-06; Database: WA_MPL_EASTERNUS_Dein

Location Information					
Facility Name		Grid East (US ft)	Grid North (US ft)	Latitude	Longitude
Husher Pad		1634418.610	14256440.160	39°17'13.2635"N	81°01'16.3141"W
Slot	Local N (ft)	Local E (ft)	Grid East (US ft)	Grid North (US ft)	Latitude
Slot A	0.00	0.00	1634418.610	14256440.160	39°17'13.2635"N

Well Profile Data								
Design Comment	MD (ft)	Inc (°)	Az (°)	TVD (ft)	Local N (ft)	Local E (ft)	DLS (°/100ft)	VS (ft)
Tie On	6277.00	27.180	137.290	5784.23	-1637.14	1374.54	0.40	1996.39
Proj. to Bottom	6351.00	27.180	137.290	5850.06	-1661.98	1397.47	0.00	2027.36
Curve KOP	6381.00	27.180	137.290	5876.75	-1672.05	1406.77	0.00	2039.91
Build	6489.40	35.518	141.899	5969.26	-1715.10	1443.06	8.00	2092.46
POE	6843.70	67.926	160.929	6187.00	-1959.06	1564.08	10.00	2362.57
Landing Pt.	7064.44	90.000	160.929	6229.00	-2162.57	1634.43	10.00	2577.89
BHL	27495.08	90.000	160.929	6229.00	-21471.91	8309.79	0.00	23008.53

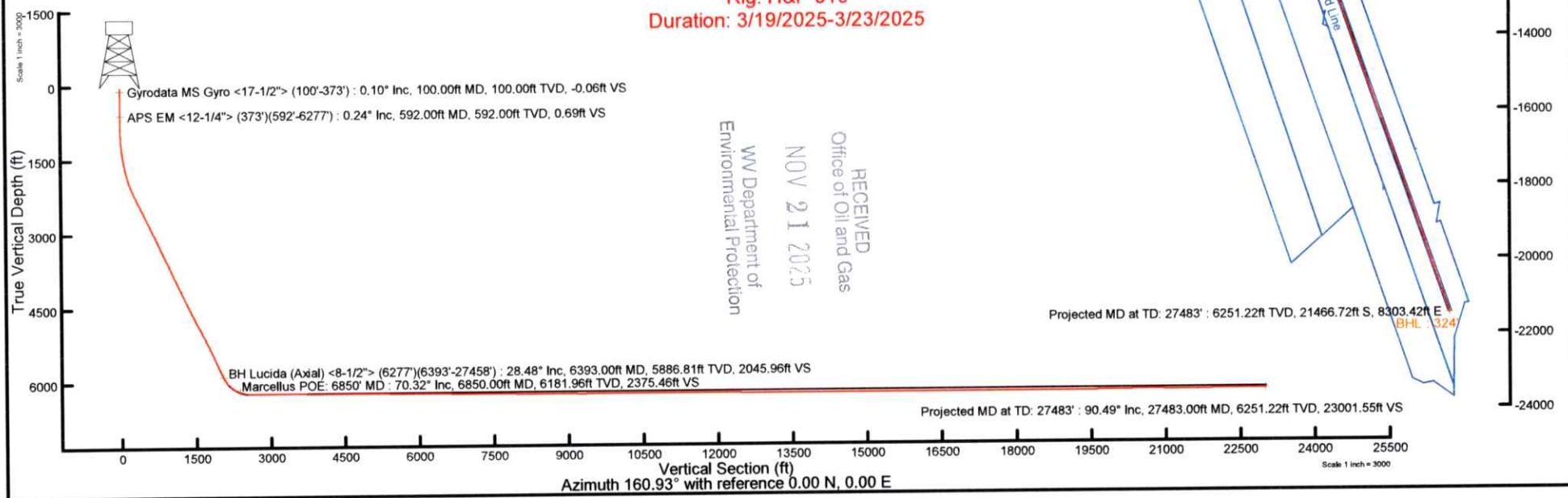
Well Data			
Slot	Well	Wellbore	Wellpath
Slot A	Neptune Unit 1H	Neptune Unit 1H AWP	Neptune Unit 1H AWP Proj: 27483'
Slot A	Neptune Unit 1H	Neptune Unit 1H PWB	Neptune Unit 1H PWP Rev-B.0



User specified (HDGM) Dip: 65.73° Field: 50950 nT
 Magnetic North is 7.89 degrees West of True North (at 12/31/2024)
 Grid North is 0.01 degrees West of True North
 To correct azimuth from True to Grid add 0.01 degrees
 To correct azimuth from Magnetic to Grid subtract 7.88 degrees

API: 47-085-10537-0000
 BH Job #: 112579067
 Rig: H&P 519
 Duration: 3/19/2025-3/23/2025

RECEIVED
 Office of Oil and Gas
 NOV 21 2025
 WV Department of
 Environmental Protection



Gyrodata MS Gyro <17-1/2"> (100'-373') : 0.10° Inc, 100.00ft MD, 100.00ft TVD, -0.06ft VS
 APS EM <12-1/4"> (373')(592'-6277') : 0.24° Inc, 592.00ft MD, 592.00ft TVD, 0.69ft VS

BH Lucida (Axial) <8-1/2"> (6277')(6393'-27458') : 28.48° Inc, 6393.00ft MD, 5886.81ft TVD, 2045.96ft VS
 Marcellus POE: 6850' MD : 70.32° Inc, 6850.00ft MD, 6181.96ft TVD, 2375.46ft VS



Actual Wellpath Report

Neptune Unit 1H AWP Proj: 27483'
Page 1 of 14



REFERENCE WELLPATH IDENTIFICATION

Operator	ANTERO RESOURCES CORPORATION	Well	Neptune Unit 1H
Field	Ritchie	API	47-085-10537-0000
Facility	Husher Pad	Wellbore	Neptune Unit 1H AWB
Slot	Slot A		

REPORT SETUP INFORMATION

Projection System	NAD27 / UTM Zone 17 North, US feet	Software System	WellArchitect® 6.0
North Reference	Grid	User	Edsaryar
Scale	0.999600	Report Generated	4/6/2025 at 5:50:39 PM
Convergence at slot	0.01° West	Database	WA_MPL_EASTERNUS_Defn

WELLPATH LOCATION

	Local coordinates		Grid coordinates		Geographic coordinates	
	North[ft]	East[ft]	Easting[US ft]	Northing[US ft]	Latitude	Longitude
Slot Location	0.00	0.00	1634418.61	14266440.16	39°17'13.2635"N	81°01'16.3141"W
Facility Reference Pt			1634418.61	14266440.16	39°17'13.2635"N	81°01'16.3141"W
Field Reference Pt			0.00	0.00	0°00'0.0000"	85°29'19.3013"W

WELLPATH DATUM

Calculation method	Minimum curvature	H&P 519 (RKB) to Facility Vertical Datum	1037.00ft
Horizontal Reference Pt	Slot	H&P 519 (RKB) to Mean Sea Level	1037.00ft
Vertical Reference Pt	H&P 519 (RKB)	H&P 519 (RKB) to Ground Level at Slot (Slot A)	30.00ft
MD Reference Pt	H&P 519 (RKB)	Section Origin	N 0.00, E 0.00 ft
Field Vertical Reference	Mean Sea Level	Section Azimuth	160.93°

RECEIVED
 Office of Oil and Gas
 NOV 21 2025
 WV Department of
 Environmental Protection



Actual Wellpath Report

Neptune Unit 1H AWP Proj: 27483'
Page 2 of 14



REFERENCE WELLPATH IDENTIFICATION

Operator	ANTERO RESOURCES CORPORATION	Well	Neptune Unit 1H
Field	Ritchie	API	47-085-10537-0000
Facility	Husher Pad	Wellbore	Neptune Unit 1H AWB
Slot	Slot A		

WELLPATH DATA (298 stations) † = interpolated, ‡ = extrapolated station

MD [ft]	Inclination [°]	Azimuth [°]	TVD [ft]	Vert Sect [ft]	North [ft]	East [ft]	Grid East [US ft]	Grid North [US ft]	Latitude	Longitude	Closure Dist [ft]	Closure Dir [°]	DLS ["/100ft]	Build Rate ["/100ft]	Turn Rate ["/100ft]	Comments
0.00†	0.000	351.780	0.00	0.00	0.00	0.00	1634418.61	14266440.16	39°17'13.2635"N	81°01'16.3141"W	0.00	0.000	0.00	0.00	0.00	
30.00	0.000	351.780	30.00	0.00	0.00	0.00	1634418.61	14266440.16	39°17'13.2635"N	81°01'16.3141"W	0.00	0.000	0.00	0.00	0.00	
100.00	0.100	351.780	100.00	-0.06	0.06	-0.01	1634418.60	14266440.22	39°17'13.2641"N	81°01'16.3142"W	0.06	351.780	0.14	0.14	0.00	Gyrodata MS Gyro <17-1/2"> (100'-373')
200.00	0.060	317.690	200.00	-0.19	0.19	-0.06	1634418.55	14266440.35	39°17'13.2653"N	81°01'16.3148"W	0.19	343.077	0.06	-0.04	-34.09	
300.00	0.010	192.950	300.00	-0.23	0.22	-0.09	1634418.52	14266440.38	39°17'13.2656"N	81°01'16.3153"W	0.24	336.536	0.07	-0.05	-124.74	
373.00	0.230	151.290	373.00	-0.08	0.08	-0.02	1634418.59	14266440.24	39°17'13.2643"N	81°01'16.3144"W	0.08	343.051	0.30	0.30	-57.07	
592.00	0.240	118.790	592.00	0.69	-0.53	0.59	1634419.20	14266439.63	39°17'13.2583"N	81°01'16.3066"W	0.79	131.759	0.06	0.00	-14.84	APS EM <12-1/4"> (373')(592'-6277')
682.00	0.270	129.260	682.00	1.01	-0.75	0.92	1634419.53	14266439.41	39°17'13.2560"N	81°01'16.3024"W	1.19	129.267	0.06	0.03	11.63	
773.00	0.450	125.000	773.00	1.48	-1.09	1.38	1634419.99	14266439.07	39°17'13.2527"N	81°01'16.2966"W	1.76	128.399	0.20	0.20	-4.68	
862.00	0.360	144.790	861.99	2.03	-1.52	1.82	1634420.43	14266438.64	39°17'13.2484"N	81°01'16.2909"W	2.37	129.803	0.19	-0.10	22.24	
952.00	1.530	129.720	951.98	3.33	-2.52	2.91	1634421.52	14266437.64	39°17'13.2386"N	81°01'16.2771"W	3.85	130.865	1.32	1.30	-16.74	
1042.00	3.710	129.900	1041.88	6.85	-5.15	6.07	1634424.68	14266435.01	39°17'13.2125"N	81°01'16.2369"W	7.96	130.340	2.42	2.42	0.20	
1141.00	5.530	129.590	1140.55	13.67	-10.25	12.20	1634430.81	14266429.91	39°17'13.1622"N	81°01'16.1589"W	15.94	130.027	1.84	1.84	-0.31	
1235.00	6.240	139.360	1234.06	22.29	-17.01	19.02	1634437.62	14266423.15	39°17'13.0954"N	81°01'16.0721"W	25.52	131.810	1.30	0.76	10.39	
1330.00	7.070	144.480	1328.42	32.70	-25.69	25.78	1634444.38	14266414.48	39°17'13.0096"N	81°01'15.9861"W	36.39	134.898	1.07	0.87	5.39	
1425.00	8.530	144.330	1422.54	45.06	-36.17	33.29	1634451.88	14266404.00	39°17'12.9060"N	81°01'15.8907"W	49.16	137.379	1.54	1.54	-0.16	
1520.00	10.650	142.720	1516.21	60.15	-48.88	42.71	1634461.31	14266391.30	39°17'12.7804"N	81°01'15.7707"W	64.91	138.853	2.25	2.23	-1.69	
1615.00	12.330	142.370	1609.30	78.11	-63.90	54.22	1634472.81	14266376.28	39°17'12.6320"N	81°01'15.6243"W	83.81	139.683	1.77	1.77	-0.37	
1710.00	13.530	141.550	1701.89	98.21	-80.64	67.33	1634485.91	14266359.55	39°17'12.4666"N	81°01'15.4576"W	105.05	140.140	1.28	1.26	-0.86	
1805.00	15.250	142.140	1793.90	120.52	-99.21	81.91	1634500.48	14266340.99	39°17'12.2831"N	81°01'15.2721"W	128.65	140.456	1.82	1.81	0.62	
1899.00	17.470	142.780	1884.09	145.64	-120.21	98.03	1634516.60	14266320.00	39°17'12.0756"N	81°01'15.0670"W	155.11	140.802	2.37	2.36	0.68	
1994.00	20.040	143.850	1974.04	174.75	-144.71	116.26	1634534.82	14266295.51	39°17'11.8335"N	81°01'14.8351"W	185.63	141.221	2.73	2.71	1.13	
2089.00	22.550	144.780	2062.55	207.81	-172.74	136.37	1634554.93	14266267.49	39°17'11.5565"N	81°01'14.5792"W	220.08	141.710	2.67	2.64	0.98	
2184.00	24.700	144.640	2149.58	244.37	-203.81	158.37	1634576.91	14266236.43	39°17'11.2494"N	81°01'14.2994"W	258.11	142.152	2.26	2.26	-0.15	
2279.00	26.530	143.870	2235.24	283.70	-237.14	182.37	1634600.90	14266203.12	39°17'10.9201"N	81°01'13.9941"W	299.15	142.439	1.96	1.93	-0.81	
2373.00	28.190	143.400	2318.72	324.95	-271.92	207.98	1634626.51	14266168.35	39°17'10.5764"N	81°01'13.6682"W	342.34	142.589	1.78	1.77	-0.50	
2468.00	27.550	142.640	2402.70	367.21	-307.40	234.69	1634653.21	14266132.89	39°17'10.2258"N	81°01'13.3284"W	386.75	142.639	0.77	-0.67	-0.80	
2563.00	27.460	141.100	2486.97	408.67	-341.91	261.78	1634680.29	14266098.39	39°17'9.8848"N	81°01'12.9838"W	430.61	142.560	0.75	-0.09	-1.62	
2658.00	26.920	139.660	2571.47	449.32	-375.34	289.46	1634707.95	14266064.97	39°17'9.5543"N	81°01'12.6317"W	473.99	142.361	0.90	-0.57	-1.52	
2752.00	28.200	138.430	2654.80	489.67	-408.18	317.97	1634736.45	14266032.14	39°17'9.2298"N	81°01'12.2690"W	517.41	142.082	1.49	1.36	-1.31	

RECEIVED
Office of Oil and Gas
NOV 21 2025
WV Department of
Environmental Protection



Actual Wellpath Report

Neptune Unit 1H AWP Proj: 27483'
Page 3 of 14



REFERENCE WELLPATH IDENTIFICATION			
Operator	ANTERO RESOURCES CORPORATION	Well	Neptune Unit 1H
Field	Ritchie	API	47-085-10537-0000
Facility	Husher Pad	Wellbore	Neptune Unit 1H AWB
Slot	Slot A		

WELLPATH DATA (298 stations)																
MD [ft]	Inclination [°]	Azimuth [°]	TVD [ft]	Vert Sect [ft]	North [ft]	East [ft]	Grid East [US ft]	Grid North [US ft]	Latitude	Longitude	Closure Dist [ft]	Closure Dir [°]	DLS [°/100ft]	Build Rate [°/100ft]	Turn Rate [°/100ft]	Comments
2847.00	28.000	135.910	2738.61	530.61	-440.99	348.38	1634766.85	14265999.34	39°17'8.9056"N	81°01'11.8822"W	562.00	141.692	1.27	-0.21	-2.65	
2942.00	27.600	137.710	2822.64	571.05	-473.29	378.70	1634797.16	14265967.06	39°17'8.5864"N	81°01'11.4964"W	606.15	141.335	0.98	-0.42	1.89	
3041.00	27.040	137.010	2910.60	612.69	-506.72	409.48	1634827.93	14265933.65	39°17'8.2561"N	81°01'11.1049"W	651.49	141.058	0.65	-0.57	-0.71	
3135.00	27.520	137.460	2994.15	652.15	-538.35	438.73	1634857.17	14265902.03	39°17'7.9436"N	81°01'10.7328"W	694.48	140.821	0.56	0.51	0.48	
3230.00	27.240	137.110	3078.50	692.17	-570.45	468.37	1634886.79	14265869.94	39°17'7.6264"N	81°01'10.3558"W	738.09	140.612	0.34	-0.29	-0.37	
3325.00	27.460	138.310	3162.88	732.28	-602.73	497.73	1634916.14	14265837.67	39°17'7.3073"N	81°01'9.9822"W	781.68	140.450	0.62	0.23	1.26	
3419.00	26.750	137.610	3246.56	771.71	-634.54	526.41	1634944.81	14265805.87	39°17'6.9930"N	81°01'9.6175"W	824.47	140.321	0.83	-0.76	-0.74	
3514.00	27.130	139.150	3331.25	811.46	-666.72	554.99	1634973.38	14265773.71	39°17'6.6750"N	81°01'9.2539"W	867.48	140.225	0.84	0.40	1.62	
3609.00	26.880	138.670	3415.89	851.45	-699.23	583.34	1635001.72	14265741.21	39°17'6.3538"N	81°01'8.8932"W	910.61	140.163	0.35	-0.26	-0.51	
3704.00	27.670	139.590	3500.33	891.87	-732.15	611.83	1635030.19	14265708.30	39°17'6.0284"N	81°01'8.5309"W	954.14	140.116	0.94	0.83	0.97	
3798.00	27.250	140.090	3583.74	932.31	-765.28	639.78	1635058.14	14265675.19	39°17'5.7011"N	81°01'8.1753"W	997.48	140.104	0.51	-0.45	0.53	
3893.00	26.520	137.540	3668.48	972.10	-797.61	668.06	1635086.40	14265642.87	39°17'5.3816"N	81°01'7.8156"W	1040.42	140.051	1.44	-0.77	-2.68	
3987.00	27.020	139.000	3752.40	1011.17	-829.21	696.23	1635114.56	14265611.29	39°17'5.0693"N	81°01'7.4572"W	1082.74	139.982	0.88	0.53	1.55	
4082.00	26.910	139.220	3837.07	1051.16	-861.77	724.43	1635142.75	14265578.74	39°17'4.7475"N	81°01'7.0985"W	1125.81	139.949	0.16	-0.12	0.23	
4177.00	25.870	137.460	3922.17	1090.15	-893.32	752.49	1635170.79	14265547.20	39°17'4.4357"N	81°01'6.7416"W	1168.01	139.891	1.37	-1.09	-1.85	
4272.00	26.480	137.870	4007.43	1128.65	-924.30	780.71	1635199.00	14265516.23	39°17'4.1296"N	81°01'6.3827"W	1209.89	139.814	0.67	0.64	0.43	
4366.00	27.050	140.790	4091.36	1168.00	-956.41	808.28	1635226.56	14265484.14	39°17'3.8124"N	81°01'6.0319"W	1252.21	139.798	1.52	0.61	3.11	
4461.00	26.700	140.410	4176.10	1208.27	-989.59	835.53	1635253.81	14265450.97	39°17'3.4844"N	81°01'5.6852"W	1295.15	139.825	0.41	-0.37	-0.40	
4555.00	27.210	140.400	4259.89	1248.17	-1022.42	862.69	1635280.96	14265418.15	39°17'3.1600"N	81°01'5.3398"W	1337.75	139.843	0.54	0.54	-0.01	
4650.00	27.840	140.380	4344.14	1289.29	-1056.25	890.68	1635308.93	14265384.34	39°17'2.8257"N	81°01'4.9837"W	1381.66	139.861	0.66	0.66	-0.02	
4745.00	27.060	139.740	4428.44	1330.21	-1089.82	918.79	1635337.03	14265350.77	39°17'2.4939"N	81°01'4.6261"W	1425.45	139.867	0.88	-0.82	-0.67	
4840.00	27.890	141.020	4512.73	1371.25	-1123.59	946.74	1635364.97	14265317.02	39°17'2.1602"N	81°01'4.2707"W	1469.27	139.882	1.07	0.87	1.35	
4934.00	28.570	142.900	4595.55	1413.29	-1158.61	974.13	1635392.34	14265282.02	39°17'1.8142"N	81°01'3.9223"W	1513.70	139.944	1.19	0.72	2.00	
5029.00	27.680	142.260	4679.33	1455.80	-1194.17	1001.33	1635419.54	14265246.47	39°17'1.4627"N	81°01'3.5761"W	1558.44	140.020	0.99	-0.94	-0.67	
5124.00	28.490	143.510	4763.14	1498.32	-1229.84	1028.31	1635446.51	14265210.81	39°17'1.1102"N	81°01'3.2329"W	1603.10	140.100	1.05	0.85	1.32	
5218.00	29.790	144.660	4845.24	1542.13	-1266.91	1055.16	1635473.34	14265173.75	39°17'0.7438"N	81°01'2.8915"W	1648.76	140.211	1.51	1.38	1.22	
5313.00	29.340	142.630	4927.88	1586.88	-1304.66	1082.93	1635501.11	14265136.02	39°17'0.3708"N	81°01'2.5381"W	1695.55	140.306	1.16	-0.47	-2.14	
5408.00	28.510	140.250	5011.03	1630.19	-1340.59	1111.56	1635529.72	14265100.11	39°17'0.0157"N	81°01'2.1740"W	1741.48	140.336	1.49	-0.87	-2.51	
5506.00	28.370	140.190	5097.20	1673.85	-1376.46	1141.42	1635559.57	14265064.25	39°16'59.6613"N	81°01'1.7942"W	1788.15	140.333	0.15	-0.14	-0.06	
5600.00	28.010	138.630	5180.05	1715.16	-1410.18	1170.31	1635588.45	14265030.55	39°16'59.3281"N	81°01'1.4267"W	1832.55	140.311	0.87	-0.38	-1.66	

RECEIVED
 Office of Oil and Gas
 NOV 21 2025
 WV Department of
 Environmental Protection



Actual Wellpath Report

Neptune Unit 1H AWP Proj: 27483'
Page 4 of 14



REFERENCE WELLPATH IDENTIFICATION			
Operator	ANTERO RESOURCES CORPORATION	Well	Neptune Unit 1H
Field	Ritchie	API	47-085-10537-0000
Facility	Husher Pad	Wellbore	Neptune Unit 1H AWB
Slot	Slot A		

WELLPATH DATA (298 stations) † = interpolated, ‡ = extrapolated station																
MD [ft]	Inclination [°]	Azimuth [°]	TVD [ft]	Vert Sect [ft]	North [ft]	East [ft]	Grid East [US ft]	Grid North [US ft]	Latitude	Longitude	Closure Dist [ft]	Closure Dir [°]	DLS ["/100ft]	Build Rate ["/100ft]	Turn Rate ["/100ft]	Comments
5694.00	27.760	137.970	5263.14	1755.74	-1443.01	1199.55	1635617.68	14264997.73	39°16'59.0037"N	81°01'1.0547"W	1876.48	140.264	0.42	-0.27	-0.70	
5789.00	27.090	137.170	5347.46	1795.91	-1475.30	1229.07	1635647.19	14264965.45	39°16'58.6845"N	81°01'0.6793"W	1920.19	140.202	0.80	-0.71	-0.84	
5883.00	26.530	136.400	5431.36	1834.59	-1506.20	1258.10	1635676.20	14264934.56	39°16'58.3792"N	81°01'0.3100"W	1962.51	140.129	0.70	-0.60	-0.82	
5978.00	26.180	139.480	5516.49	1873.40	-1537.50	1286.35	1635704.44	14264903.28	39°16'58.0699"N	81°00'59.9507"W	2004.64	140.083	1.49	-0.37	3.24	
6072.00	25.890	138.040	5600.95	1911.61	-1568.52	1313.54	1635731.62	14264872.27	39°16'57.7633"N	81°00'59.6048"W	2045.89	140.056	0.74	-0.31	-1.53	
6167.00	26.600	139.160	5686.15	1950.47	-1600.04	1341.32	1635759.39	14264840.76	39°16'57.4519"N	81°00'59.2515"W	2087.88	140.027	0.91	0.75	1.18	
6262.00	27.170	137.420	5770.89	1990.11	-1632.10	1369.90	1635787.96	14264808.71	39°16'57.1350"N	81°00'58.8879"W	2130.82	139.992	1.02	0.60	-1.83	
6277.00	27.180	137.290	5784.23	1996.39	-1637.14	1374.54	1635792.60	14264803.68	39°16'57.0852"N	81°00'58.8288"W	2137.66	139.983	0.40	0.07	-0.87	
6393.00	28.480	137.110	5886.81	2045.96	-1676.87	1411.34	1635829.38	14264763.96	39°16'56.6926"N	81°00'58.3608"W	2191.75	139.914	1.12	1.12	-0.16	BH Lucida (Axial) <8-1/2"> (6277)(6393-27458')
6485.00†	35.891	144.953	5964.65	2092.04	-1715.09	1441.81	1635859.84	14264725.76	39°16'56.3149"N	81°00'57.9732"W	2240.62	139.948	9.23	8.06	8.53	Sycamore: 6485' MD
6488.00	36.140	145.160	5967.08	2093.74	-1716.54	1442.82	1635860.85	14264724.31	39°16'56.3006"N	81°00'57.9604"W	2242.37	139.952	9.23	8.29	6.90	
6582.00	43.900	150.620	6039.04	2152.58	-1767.78	1474.70	1635892.72	14264673.09	39°16'55.7942"N	81°00'57.5548"W	2302.13	140.165	9.05	8.26	5.81	
6607.00†	46.564	152.130	6056.64	2170.09	-1783.36	1483.20	1635901.21	14264657.52	39°16'55.6402"N	81°00'57.4467"W	2319.54	140.250	11.48	10.66	6.04	Middlesex: 6607' MD
6677.00	54.110	155.740	6101.30	2223.53	-1831.76	1506.77	1635924.78	14264609.14	39°16'55.1619"N	81°00'57.1469"W	2371.85	140.560	11.48	10.78	5.16	
6772.00	62.360	156.660	6151.26	2303.95	-1905.61	1539.31	1635957.30	14264535.32	39°16'54.4321"N	81°00'56.7329"W	2449.66	141.069	8.72	8.68	0.97	
6777.00†	62.970	156.794	6153.56	2308.38	-1909.69	1541.07	1635959.06	14264531.24	39°16'54.3917"N	81°00'56.7106"W	2453.93	141.097	12.44	12.21	2.67	Burkett: 6777' MD
6818.00	67.980	157.840	6170.57	2345.60	-1944.09	1555.44	1635973.42	14264496.85	39°16'54.0517"N	81°00'56.5277"W	2489.76	141.337	12.44	12.22	2.55	
6836.00†	69.299	157.765	6177.13	2362.34	-1959.61	1561.77	1635979.75	14264481.33	39°16'53.8983"N	81°00'56.4471"W	2505.84	141.446	7.34	7.33	-0.41	Tully: 6836' MD
6850.00†	70.324	157.708	6181.96	2375.46	-1971.77	1566.75	1635984.73	14264469.18	39°16'53.7781"N	81°00'56.3838"W	2518.45	141.530	7.34	7.33	-0.41	Marcellus POE: 6850' MD
6867.00	71.570	157.640	6187.51	2391.50	-1986.64	1572.85	1635990.83	14264454.32	39°16'53.6312"N	81°00'56.3061"W	2533.89	141.631	7.34	7.33	-0.40	
6962.00	78.720	159.420	6211.85	2483.18	-2072.04	1606.42	1636024.38	14264368.95	39°16'52.7872"N	81°00'55.8791"W	2621.82	142.214	7.74	7.53	1.87	
7057.00	89.420	160.540	6221.65	2577.52	-2160.70	1638.71	1636056.66	14264280.33	39°16'51.9110"N	81°00'55.4683"W	2711.82	142.823	11.32	11.26	1.18	
7151.00	89.480	160.400	6222.56	2671.51	-2249.28	1670.13	1636088.07	14264191.78	39°16'51.0355"N	81°00'55.0685"W	2801.54	143.405	0.16	0.06	-0.15	
7246.00	89.380	160.300	6223.50	2766.50	-2338.75	1702.08	1636120.00	14264102.35	39°16'50.1513"N	81°00'54.6620"W	2892.54	143.954	0.15	-0.11	-0.11	
7341.00	89.290	160.490	6224.60	2861.49	-2428.23	1733.95	1636151.86	14264012.90	39°16'49.2669"N	81°00'54.2565"W	2983.77	144.470	0.22	-0.09	0.20	
7436.00	89.630	160.240	6225.50	2956.48	-2517.70	1765.87	1636183.77	14263923.47	39°16'48.3826"N	81°00'53.8504"W	3075.25	144.955	0.44	0.36	-0.26	
7531.00	89.690	161.480	6226.06	3051.48	-2607.45	1797.02	1636214.91	14263833.76	39°16'47.4957"N	81°00'53.4541"W	3166.71	145.426	1.31	0.06	1.31	
7626.00	89.350	161.410	6226.86	3146.47	-2697.51	1827.25	1636245.12	14263743.74	39°16'46.6056"N	81°00'53.0695"W	3258.13	145.887	0.37	-0.36	-0.07	
7720.00	89.480	161.040	6227.82	3240.47	-2786.50	1857.50	1636275.36	14263654.78	39°16'45.7261"N	81°00'52.6846"W	3348.87	146.312	0.42	0.14	-0.39	
7816.00	89.480	160.890	6228.69	3336.46	-2877.25	1888.81	1636306.66	14263564.07	39°16'44.8292"N	81°00'52.2863"W	3441.83	146.717	0.16	0.00	-0.16	

RECEIVED
 Office of Oil and Gas
 NOV 21 2025
 WV Department of
 Environmental Protection



Actual Wellpath Report

Neptune Unit 1H AWP Proj: 27483'
Page 5 of 14



REFERENCE WELLPATH IDENTIFICATION

Operator	ANTERO RESOURCES CORPORATION	Well	Neptune Unit 1H
Field	Ritchie	API	47-085-10537-0000
Facility	Husher Pad	Wellbore	Neptune Unit 1H AWB
Slot	Slot A		

WELLPATH DATA (298 stations)

MD [ft]	Inclination [°]	Azimuth [°]	TVD [ft]	Vert Sect [ft]	North [ft]	East [ft]	Grid East [US ft]	Grid North [US ft]	Latitude	Longitude	Closure Dist [ft]	Closure Dir [°]	DLS [°/100ft]	Build Rate [°/100ft]	Turn Rate [°/100ft]	Comments
7910.00	90.000	161.350	6229.12	3430.46	-2966.19	1919.23	1636337.07	14263475.16	39°16'43.9502"N	81°00'51.8993"W	3532.95	147.096	0.74	0.55	0.49	
8005.00	89.910	161.410	6229.19	3525.46	-3056.22	1949.56	1636367.39	14263385.17	39°16'43.0604"N	81°00'51.5134"W	3625.09	147.466	0.11	-0.09	0.06	
8100.00	89.720	161.010	6229.50	3620.46	-3146.15	1980.16	1636397.97	14263295.27	39°16'42.1715"N	81°00'51.1241"W	3717.43	147.814	0.47	-0.20	-0.42	
8195.00	89.720	160.330	6229.96	3715.45	-3235.80	2011.60	1636429.41	14263205.66	39°16'41.2856"N	81°00'50.7241"W	3810.11	148.132	0.72	0.00	-0.72	
8289.00	89.570	159.630	6230.54	3809.44	-3324.11	2043.78	1636461.57	14263117.38	39°16'40.4127"N	81°00'50.3147"W	3902.15	148.415	0.76	-0.16	-0.74	
8384.00	89.690	161.210	6231.16	3904.43	-3413.62	2075.62	1636493.39	14263027.92	39°16'39.5282"N	81°00'49.9097"W	3995.12	148.699	1.67	0.13	1.66	
8479.00	89.510	160.710	6231.82	3999.43	-3503.42	2106.61	1636524.37	14262938.15	39°16'38.6406"N	81°00'49.5154"W	4088.00	148.981	0.56	-0.19	-0.53	
8574.00	89.540	160.270	6232.61	4094.42	-3592.96	2138.34	1636556.09	14262848.65	39°16'37.7557"N	81°00'49.1118"W	4181.13	149.241	0.46	0.03	-0.46	
8669.00	89.660	160.410	6233.27	4189.41	-3682.42	2170.30	1636588.03	14262759.22	39°16'36.8715"N	81°00'48.7052"W	4274.39	149.486	0.19	0.13	0.15	
8763.00	89.540	160.150	6233.93	4283.40	-3770.90	2202.01	1636619.74	14262670.77	39°16'35.9970"N	81°00'48.3017"W	4366.76	149.717	0.30	-0.13	-0.28	
8858.00	89.690	160.890	6234.57	4378.40	-3860.46	2233.69	1636651.41	14262581.25	39°16'35.1119"N	81°00'47.8987"W	4460.11	149.946	0.79	0.16	0.78	
8953.00	89.750	161.010	6235.03	4473.40	-3950.26	2264.70	1636682.40	14262491.49	39°16'34.2244"N	81°00'47.5043"W	4553.39	150.174	0.14	0.06	0.13	
9048.00	89.750	160.420	6235.44	4568.40	-4039.93	2296.08	1636713.76	14262401.86	39°16'33.3382"N	81°00'47.1051"W	4646.82	150.388	0.62	0.00	-0.62	
9143.00	89.600	160.800	6235.98	4663.39	-4129.54	2327.61	1636745.29	14262312.28	39°16'32.4526"N	81°00'46.7039"W	4740.34	150.592	0.43	-0.16	0.40	
9237.00	89.690	160.640	6236.57	4757.39	-4218.26	2358.65	1636776.31	14262223.59	39°16'31.5756"N	81°00'46.3091"W	4832.91	150.788	0.20	0.10	-0.17	
9332.00	89.720	160.660	6237.06	4852.39	-4307.90	2390.13	1636807.78	14262134.00	39°16'30.6898"N	81°00'45.9087"W	4926.53	150.977	0.04	0.03	0.02	
9427.00	89.780	161.000	6237.47	4947.39	-4397.63	2421.32	1636838.96	14262044.30	39°16'29.8029"N	81°00'45.5118"W	5020.15	151.163	0.36	0.06	0.36	
9522.00	89.720	160.740	6237.88	5042.39	-4487.38	2452.45	1636870.08	14261954.58	39°16'28.9159"N	81°00'45.1158"W	5113.82	151.342	0.28	-0.06	-0.27	
9617.00	89.600	160.740	6238.45	5137.38	-4577.06	2483.79	1636901.40	14261864.94	39°16'28.0295"N	81°00'44.7172"W	5207.56	151.513	0.13	-0.13	0.00	
9712.00	89.690	160.840	6239.04	5232.38	-4666.77	2515.05	1636932.65	14261775.27	39°16'27.1429"N	81°00'44.3196"W	5301.34	151.679	0.14	0.09	0.11	
9807.00	89.600	160.830	6239.63	5327.38	-4756.50	2546.23	1636963.82	14261685.57	39°16'26.2561"N	81°00'43.9229"W	5395.15	151.839	0.10	-0.09	-0.01	
9902.00	89.910	160.770	6240.03	5422.38	-4846.22	2577.48	1636995.05	14261595.89	39°16'25.3694"N	81°00'43.5255"W	5489.01	151.994	0.33	0.33	-0.06	
9996.00	89.970	161.020	6240.13	5516.38	-4935.04	2608.24	1637025.80	14261507.10	39°16'24.4915"N	81°00'43.1341"W	5581.89	152.143	0.27	0.06	0.27	
10091.00	89.820	160.690	6240.30	5611.38	-5024.78	2639.40	1637056.95	14261417.39	39°16'23.6046"N	81°00'42.7378"W	5675.82	152.288	0.38	-0.16	-0.35	
10186.00	89.720	160.390	6240.69	5706.37	-5114.36	2671.05	1637088.58	14261327.86	39°16'22.7193"N	81°00'42.3352"W	5769.85	152.424	0.33	-0.11	-0.32	
10281.00	89.380	159.770	6241.43	5801.36	-5203.67	2703.41	1637120.94	14261238.58	39°16'21.8366"N	81°00'41.9235"W	5864.01	152.547	0.74	-0.36	-0.65	
10376.00	89.570	157.890	6242.30	5896.29	-5292.25	2737.72	1637155.23	14261150.04	39°16'20.9611"N	81°00'41.4872"W	5958.44	152.647	1.99	0.20	-1.98	
10470.00	89.600	160.550	6242.98	5990.24	-5380.13	2771.06	1637188.56	14261062.20	39°16'20.0926"N	81°00'41.0630"W	6051.82	152.749	2.83	0.03	2.83	
10565.00	89.230	160.860	6243.95	6085.23	-5469.78	2802.45	1637219.94	14260972.57	39°16'19.2065"N	81°00'40.6637"W	6145.92	152.872	0.51	-0.39	0.33	
10660.00	89.350	161.950	6245.13	6180.22	-5559.82	2832.74	1637250.22	14260882.58	39°16'18.3167"N	81°00'40.2784"W	6239.87	153.001	1.15	0.13	1.15	

RECEIVED
Office of Oil and Gas
NOV 21 2025
WV Department of
Environmental Protection



Actual Wellpath Report

Neptune Unit 1H AWP Proj: 27483'

Page 6 of 14



REFERENCE WELLPATH IDENTIFICATION

Operator	ANTERO RESOURCES CORPORATION	Well	Neptune Unit 1H
Field	Ritchie	API	47-085-10537-0000
Facility	Husher Pad	Wellbore	Neptune Unit 1H AWB
Slot	Slot A		

WELLPATH DATA (298 stations)

MD [ft]	Inclination [°]	Azimuth [°]	TVD [ft]	Vert Sect [ft]	North [ft]	East [ft]	Grid East [US ft]	Grid North [US ft]	Latitude	Longitude	Closure Dist [ft]	Closure Dir [°]	DLS [°/100ft]	Build Rate [°/100ft]	Turn Rate [°/100ft]	Comments
10755.00	89.480	161.370	6246.10	6275.20	-5649.99	2862.63	1637280.09	14260792.44	39°16'17.4255"N	81°00'39.8982"W	6333.80	153.130	0.63	0.14	-0.61	
10850.00	89.200	160.190	6247.19	6370.20	-5739.68	2893.91	1637311.35	14260702.78	39°16'16.5390"N	81°00'39.5005"W	6427.96	153.243	1.28	-0.29	-1.24	
10945.00	89.320	161.370	6248.42	6465.19	-5829.38	2925.18	1637342.61	14260613.12	39°16'15.6525"N	81°00'39.1027"W	6522.14	153.353	1.25	0.13	1.24	
11039.00	89.510	161.340	6249.38	6559.18	-5918.44	2955.23	1637372.65	14260524.10	39°16'14.7723"N	81°00'38.7205"W	6615.23	153.466	0.20	0.20	-0.03	
11134.00	89.630	161.840	6250.09	6654.17	-6008.58	2985.23	1637402.64	14260434.00	39°16'13.8814"N	81°00'38.3389"W	6709.29	153.581	0.54	0.13	0.53	
11229.00	89.510	161.140	6250.81	6749.16	-6098.66	3015.39	1637432.78	14260343.95	39°16'12.9911"N	81°00'37.9553"W	6803.40	153.691	0.75	-0.13	-0.74	
11324.00	89.540	161.500	6251.59	6844.16	-6188.65	3045.81	1637463.20	14260254.00	39°16'12.1017"N	81°00'37.5683"W	6897.56	153.795	0.38	0.03	0.38	
11419.00	89.510	161.150	6252.38	6939.15	-6278.65	3076.23	1637493.60	14260164.04	39°16'11.2122"N	81°00'37.1814"W	6991.75	153.897	0.37	-0.03	-0.37	
11513.00	89.480	161.140	6253.21	7033.15	-6367.60	3106.61	1637523.97	14260075.12	39°16'10.3331"N	81°00'36.7950"W	7085.01	153.993	0.03	-0.03	-0.01	
11608.00	89.540	160.960	6254.02	7128.14	-6457.45	3137.46	1637554.81	14259985.31	39°16'9.4451"N	81°00'36.4027"W	7179.29	154.086	0.20	0.06	-0.19	
11703.00	89.690	162.020	6254.66	7223.13	-6547.53	3167.62	1637584.95	14259895.26	39°16'8.5548"N	81°00'36.0191"W	7273.51	154.183	1.13	0.16	1.12	
11798.00	89.720	161.680	6255.15	7318.12	-6637.80	3197.21	1637614.53	14259805.03	39°16'7.6626"N	81°00'35.6427"W	7367.67	154.281	0.36	0.03	-0.36	
11893.00	89.570	161.370	6255.74	7413.11	-6727.90	3227.31	1637644.63	14259714.96	39°16'6.7721"N	81°00'35.2598"W	7461.92	154.373	0.36	-0.16	-0.33	
11987.00	89.660	161.930	6256.37	7507.10	-6817.12	3256.90	1637674.21	14259625.78	39°16'5.8903"N	81°00'34.8834"W	7555.17	154.464	0.60	0.10	0.60	
12082.00	89.540	161.210	6257.03	7602.09	-6907.25	3286.94	1637704.23	14259535.69	39°16'4.9995"N	81°00'34.5014"W	7649.44	154.552	0.77	-0.13	-0.76	
12177.00	89.450	161.190	6257.87	7697.09	-6997.17	3317.55	1637734.83	14259445.80	39°16'4.1107"N	81°00'34.1121"W	7743.81	154.633	0.10	-0.09	-0.02	
12271.00	89.480	159.690	6258.75	7791.08	-7085.74	3349.02	1637766.28	14259357.27	39°16'3.2354"N	81°00'33.7119"W	7837.33	154.703	1.60	0.03	-1.60	
12366.00	89.510	157.400	6259.59	7885.99	-7174.15	3383.76	1637801.01	14259268.89	39°16'2.3616"N	81°00'33.2700"W	7932.11	154.749	2.41	0.03	-2.41	
12460.00	89.660	156.870	6260.27	7979.78	-7260.76	3420.29	1637837.52	14259182.32	39°16'1.5056"N	81°00'32.8055"W	8026.02	154.777	0.59	0.16	-0.56	
12555.00	89.630	161.480	6260.86	8074.71	-7349.53	3454.05	1637871.27	14259093.58	39°16'0.6283"N	81°00'32.3761"W	8120.72	154.828	4.85	-0.03	4.85	
12650.00	89.600	161.710	6261.49	8169.70	-7439.67	3484.05	1637901.26	14259003.48	39°15'59.7374"N	81°00'31.9946"W	8215.06	154.906	0.24	-0.03	0.24	
12745.00	89.660	161.340	6262.11	8264.69	-7529.77	3514.15	1637931.35	14258913.42	39°15'58.8469"N	81°00'31.6118"W	8309.43	154.981	0.39	0.06	-0.39	
12934.00	89.570	161.460	6263.38	8453.68	-7708.89	3574.43	1637991.61	14258734.36	39°15'57.0765"N	81°00'30.8451"W	8497.27	155.124	0.08	-0.05	0.06	
13028.00	89.420	161.340	6264.21	8547.67	-7797.98	3604.41	1638021.57	14258645.31	39°15'56.1960"N	81°00'30.4638"W	8590.71	155.192	0.20	-0.16	-0.13	
13123.00	89.140	160.530	6265.40	8642.66	-7887.76	3635.44	1638052.59	14258555.57	39°15'55.3087"N	81°00'30.0692"W	8685.23	155.255	0.90	-0.29	-0.85	
13218.00	89.450	161.830	6266.57	8737.65	-7977.67	3666.08	1638083.22	14258465.69	39°15'54.4200"N	81°00'29.6795"W	8779.72	155.319	1.41	0.33	1.37	
13313.00	89.350	161.400	6267.56	8832.64	-8067.82	3696.05	1638113.17	14258375.58	39°15'53.5291"N	81°00'29.2985"W	8874.15	155.386	0.46	-0.11	-0.45	
13408.00	89.630	161.380	6268.41	8927.64	-8157.85	3726.36	1638143.47	14258285.59	39°15'52.6393"N	81°00'28.9129"W	8968.63	155.450	0.30	0.29	-0.02	
13503.00	89.720	161.570	6268.95	9022.63	-8247.92	3756.54	1638173.64	14258195.55	39°15'51.7490"N	81°00'28.5291"W	9063.11	155.513	0.22	0.09	0.20	
13597.00	89.570	161.350	6269.53	9116.62	-8337.04	3786.43	1638203.52	14258106.47	39°15'50.8682"N	81°00'28.1490"W	9156.60	155.574	0.28	-0.16	-0.23	

RECEIVED
Office of Oil and Gas
NOV 21 2025
WV Department of
Environmental Protection



Actual Wellpath Report

Neptune Unit 1H AWP Proj: 27483'

Page 7 of 14



REFERENCE WELLPATH IDENTIFICATION

Operator	ANTERO RESOURCES CORPORATION	Well	Neptune Unit 1H
Field	Ritchie	API	47-085-10537-0000
Facility	Husher Pad	Wellbore	Neptune Unit 1H AWB
Slot	Slot A		

WELLPATH DATA (298 stations)

MD [ft]	Inclination [°]	Azimuth [°]	TVD [ft]	Vert Sect [ft]	North [ft]	East [ft]	Grid East [US ft]	Grid North [US ft]	Latitude	Longitude	Closure Dist [ft]	Closure Dir [°]	DLS ["/100ft]	Build Rate ["/100ft]	Turn Rate ["/100ft]	Comments
13692.00	89.510	161.520	6270.29	9211.62	-8427.10	3816.68	1638233.75	14258016.45	39°15'49.9782"N	81°00'27.7644"W	9251.11	155.634	0.19	-0.06	0.18	
13787.00	90.280	159.800	6270.47	9306.61	-8516.73	3848.14	1638265.20	14257926.85	39°15'49.0923"N	81°00'27.3643"W	9345.74	155.685	1.98	0.81	-1.81	
13882.00	91.260	161.480	6269.19	9401.60	-8606.35	3879.63	1638296.68	14257837.27	39°15'48.2066"N	81°00'26.9639"W	9440.38	155.735	2.05	1.03	1.77	
13976.00	90.520	161.880	6267.73	9495.58	-8695.57	3909.17	1638326.21	14257748.08	39°15'47.3247"N	81°00'26.5882"W	9533.87	155.793	0.89	-0.79	0.43	
14071.00	91.480	160.320	6266.07	9590.56	-8785.43	3939.93	1638356.96	14257658.26	39°15'46.4366"N	81°00'26.1969"W	9628.44	155.846	1.93	1.01	-1.64	
14166.00	90.710	161.390	6264.26	9685.54	-8875.16	3971.08	1638388.10	14257568.57	39°15'45.5497"N	81°00'25.8008"W	9723.07	155.894	1.39	-0.81	1.13	
14261.00	89.750	160.780	6263.88	9780.54	-8965.03	4001.88	1638418.88	14257478.73	39°15'44.6615"N	81°00'25.4092"W	9817.68	155.945	1.20	-1.01	-0.64	
14356.00	90.000	161.670	6264.08	9875.53	-9054.97	4032.46	1638449.44	14257388.83	39°15'43.7726"N	81°00'25.0204"W	9912.28	155.995	0.97	0.26	0.94	
14451.00	90.150	161.480	6263.96	9970.53	-9145.10	4062.48	1638479.46	14257298.73	39°15'42.8818"N	81°00'24.6386"W	10006.83	156.048	0.25	0.16	-0.20	
14546.00	89.570	161.460	6264.19	10065.52	-9235.18	4092.67	1638509.64	14257208.70	39°15'41.9915"N	81°00'24.2547"W	10101.41	156.099	0.61	-0.61	-0.02	
14641.00	89.450	161.340	6265.00	10160.52	-9325.21	4122.97	1638539.92	14257118.70	39°15'41.1017"N	81°00'23.8694"W	10196.00	156.148	0.18	-0.13	-0.13	
14736.00	89.630	161.750	6265.77	10255.51	-9415.32	4153.04	1638569.98	14257028.62	39°15'40.2110"N	81°00'23.4870"W	10290.58	156.198	0.47	0.19	0.43	
14830.00	89.420	161.110	6266.55	10349.50	-9504.43	4182.98	1638599.91	14256939.55	39°15'39.3304"N	81°00'23.1063"W	10384.19	156.245	0.72	-0.22	-0.68	
14925.00	89.540	161.540	6267.41	10444.49	-9594.42	4213.40	1638630.31	14256849.60	39°15'38.4409"N	81°00'22.7195"W	10478.82	156.291	0.47	0.13	0.45	
15020.00	89.540	161.500	6268.17	10539.48	-9684.52	4243.51	1638660.41	14256759.53	39°15'37.5504"N	81°00'22.3366"W	10573.42	156.338	0.04	0.00	-0.04	
15116.00	89.850	161.670	6268.68	10635.48	-9775.60	4273.83	1638690.73	14256668.49	39°15'36.6502"N	81°00'21.9510"W	10669.02	156.385	0.37	0.32	0.18	
15212.00	89.720	159.250	6269.04	10731.47	-9866.06	4305.94	1638722.82	14256578.06	39°15'35.7561"N	81°00'21.5428"W	10764.77	156.422	2.52	-0.14	-2.52	
15307.00	90.120	161.210	6269.17	10826.45	-9955.46	4338.07	1638754.94	14256488.70	39°15'34.8726"N	81°00'21.1342"W	10859.56	156.455	2.11	0.42	2.06	
15402.00	90.060	161.280	6269.03	10921.45	-10045.42	4368.62	1638785.47	14256398.78	39°15'33.9835"N	81°00'20.7458"W	10954.23	156.496	0.10	-0.06	0.07	
15498.00	90.060	161.210	6268.92	11017.45	-10136.32	4399.48	1638816.32	14256307.92	39°15'33.0851"N	81°00'20.3533"W	11049.90	156.538	0.07	0.00	-0.07	
15594.00	89.970	160.680	6268.90	11113.45	-10227.06	4430.82	1638847.65	14256217.21	39°15'32.1882"N	81°00'19.9548"W	11145.62	156.576	0.56	-0.09	-0.55	
15689.00	90.060	161.280	6268.87	11208.45	-10316.87	4461.78	1638878.60	14256127.44	39°15'31.3005"N	81°00'19.5612"W	11240.34	156.613	0.64	0.09	0.63	
15785.00	90.090	161.200	6268.75	11304.45	-10407.77	4492.66	1638909.46	14256036.57	39°15'30.4021"N	81°00'19.1686"W	11336.03	156.652	0.09	0.03	-0.08	
15881.00	90.090	161.250	6268.60	11400.45	-10498.66	4523.56	1638940.35	14255945.72	39°15'29.5038"N	81°00'18.7757"W	11431.73	156.690	0.05	0.00	0.05	
15976.00	90.120	161.220	6268.42	11495.45	-10588.61	4554.12	1638970.89	14255855.80	39°15'28.6148"N	81°00'18.3872"W	11526.43	156.728	0.04	0.03	-0.03	
16072.00	90.120	161.530	6268.22	11591.44	-10679.58	4584.78	1639001.54	14255764.87	39°15'27.7156"N	81°00'17.9973"W	11622.12	156.766	0.32	0.00	0.32	
16168.00	90.060	161.000	6268.07	11687.44	-10770.50	4615.61	1639032.36	14255673.99	39°15'26.8171"N	81°00'17.6053"W	11717.83	156.803	0.56	-0.06	-0.55	
16262.00	90.060	161.400	6267.97	11781.44	-10859.48	4645.90	1639062.64	14255585.04	39°15'25.9376"N	81°00'17.2201"W	11811.55	156.838	0.43	0.00	0.43	
16357.00	90.150	161.520	6267.80	11876.43	-10949.55	4676.11	1639092.84	14255495.01	39°15'25.0474"N	81°00'16.8360"W	11906.25	156.875	0.16	0.09	0.13	
16452.00	89.720	161.500	6267.91	11971.43	-11039.65	4706.24	1639122.96	14255404.95	39°15'24.1569"N	81°00'16.4530"W	12000.94	156.911	0.45	-0.45	-0.02	

RECEIVED
Office of Oil and Gas
NOV 21 2025
WV Department of
Environmental Protection



Actual Wellpath Report

Neptune Unit 1H AWP Proj: 27483'

Page 8 of 14



REFERENCE WELLPATH IDENTIFICATION

Operator	ANTERO RESOURCES CORPORATION	Well	Neptune Unit 1H
Field	Ritchie	API	47-085-10537-0000
Facility	Husher Pad	Wellbore	Neptune Unit 1H AWB
Slot	Slot A		

WELLPATH DATA (298 stations)

MD [ft]	Inclination [°]	Azimuth [°]	TVD [ft]	Vert Sect [ft]	North [ft]	East [ft]	Grid East [US ft]	Grid North [US ft]	Latitude	Longitude	Closure Dist [ft]	Closure Dir [°]	DLS ["/100ft]	Build Rate ["/100ft]	Turn Rate ["/100ft]	Comments
16547.00	89.820	161.910	6268.29	12066.42	-11129.84	4736.06	1639152.76	14255314.79	39°15'23.2654"N	81°00'16.0738"W	12095.61	156.949	0.44	0.11	0.43	
16642.00	89.690	161.400	6268.70	12161.41	-11220.02	4765.96	1639182.65	14255224.65	39°15'22.3742"N	81°00'15.6937"W	12190.29	156.986	0.55	-0.14	-0.54	
16737.00	89.780	161.710	6269.13	12256.40	-11310.13	4796.02	1639212.70	14255134.57	39°15'21.4835"N	81°00'15.3115"W	12284.99	157.021	0.34	0.09	0.33	
16832.00	89.820	161.710	6269.47	12351.39	-11400.33	4825.83	1639242.50	14255044.41	39°15'20.5920"N	81°00'14.9325"W	12379.67	157.057	0.04	0.04	0.00	
16926.00	89.630	161.410	6269.92	12445.39	-11489.51	4855.56	1639272.22	14254955.27	39°15'19.7107"N	81°00'14.5544"W	12473.38	157.091	0.38	-0.20	-0.32	
17021.00	89.690	161.450	6270.48	12540.38	-11579.56	4885.81	1639302.46	14254865.26	39°15'18.8206"N	81°00'14.1698"W	12568.11	157.123	0.08	0.06	0.04	
17116.00	89.600	161.390	6271.07	12635.38	-11669.61	4916.08	1639332.72	14254775.24	39°15'17.9306"N	81°00'13.7850"W	12662.84	157.156	0.11	-0.09	-0.06	
17211.00	89.750	161.410	6271.61	12730.37	-11759.64	4946.38	1639363.01	14254685.24	39°15'17.0408"N	81°00'13.3997"W	12757.58	157.187	0.16	0.16	0.02	
17306.00	89.690	161.310	6272.07	12825.37	-11849.66	4976.75	1639393.36	14254595.26	39°15'16.1511"N	81°00'13.0137"W	12852.33	157.218	0.12	-0.06	-0.11	
17400.00	89.660	161.280	6272.61	12919.37	-11938.69	5006.89	1639423.49	14254506.27	39°15'15.2711"N	81°00'12.6304"W	12946.09	157.248	0.05	-0.03	-0.03	
17495.00	89.720	161.490	6273.12	13014.36	-12028.72	5037.22	1639453.80	14254416.27	39°15'14.3813"N	81°00'12.2449"W	13040.85	157.278	0.23	0.06	0.22	
17590.00	90.000	161.180	6273.35	13109.36	-12118.72	5067.62	1639484.19	14254326.31	39°15'13.4917"N	81°00'11.8584"W	13135.61	157.307	0.44	0.29	-0.33	
17685.00	89.910	161.160	6273.43	13204.36	-12208.64	5098.28	1639514.84	14254236.43	39°15'12.6030"N	81°00'11.4686"W	13230.40	157.335	0.10	-0.09	-0.02	
17780.00	89.940	160.840	6273.55	13299.36	-12298.46	5129.21	1639545.76	14254146.64	39°15'11.7152"N	81°00'11.0754"W	13325.20	157.361	0.34	0.03	-0.34	
17874.00	89.630	160.720	6273.90	13393.36	-12387.22	5160.16	1639576.69	14254057.92	39°15'10.8380"N	81°00'10.6820"W	13419.04	157.385	0.35	-0.33	-0.13	
17969.00	89.570	161.160	6274.57	13488.35	-12477.01	5191.18	1639607.70	14253968.16	39°15'9.9505"N	81°00'10.2876"W	13513.85	157.410	0.47	-0.06	0.46	
18064.00	89.780	161.350	6275.11	13583.35	-12566.97	5221.71	1639638.22	14253878.24	39°15'9.0614"N	81°00'9.8995"W	13608.64	157.437	0.30	0.22	0.20	
18159.00	89.630	161.330	6275.59	13678.35	-12656.98	5252.10	1639668.60	14253788.27	39°15'8.1718"N	81°00'9.5131"W	13703.42	157.464	0.16	-0.16	-0.02	
18254.00	89.750	161.180	6276.11	13773.34	-12746.94	5282.63	1639699.12	14253698.35	39°15'7.2827"N	81°00'9.1250"W	13798.21	157.490	0.20	0.13	-0.16	
18349.00	89.880	161.070	6276.42	13868.34	-12836.83	5313.36	1639729.84	14253608.49	39°15'6.3942"N	81°00'8.7343"W	13893.02	157.515	0.18	0.14	-0.12	
18443.00	89.850	161.450	6276.64	13962.34	-12925.84	5343.56	1639760.02	14253519.51	39°15'5.5144"N	81°00'8.3503"W	13986.82	157.540	0.41	-0.03	0.40	
18537.00	89.780	161.310	6276.94	14056.34	-13014.92	5373.58	1639790.03	14253430.47	39°15'4.6340"N	81°00'7.9688"W	14080.61	157.565	0.17	-0.07	-0.15	
18632.00	89.820	161.170	6277.27	14151.33	-13104.88	5404.13	1639820.57	14253340.55	39°15'3.7449"N	81°00'7.5804"W	14175.41	157.590	0.15	0.04	-0.15	
18727.00	89.720	161.350	6277.65	14246.33	-13194.84	5434.65	1639851.07	14253250.63	39°15'2.8557"N	81°00'7.1924"W	14270.22	157.614	0.22	-0.11	0.19	
18822.00	89.720	161.370	6278.12	14341.33	-13284.85	5465.01	1639881.43	14253160.65	39°15'1.9660"N	81°00'6.8064"W	14365.02	157.639	0.02	0.00	0.02	
18916.00	89.780	161.490	6278.53	14435.32	-13373.96	5494.95	1639911.35	14253071.58	39°15'1.0854"N	81°00'6.4259"W	14458.81	157.664	0.14	0.06	0.13	
19011.00	89.850	161.360	6278.83	14530.32	-13464.01	5525.21	1639941.60	14252981.56	39°15'0.1953"N	81°00'6.0412"W	14553.61	157.688	0.16	0.07	-0.14	
19106.00	89.750	161.270	6279.17	14625.32	-13554.00	5555.64	1639972.02	14252891.61	39°14'59.3059"N	81°00'5.6543"W	14648.42	157.712	0.14	-0.11	-0.09	
19200.00	89.690	161.360	6279.63	14719.31	-13643.05	5585.76	1640002.12	14252802.60	39°14'58.4258"N	81°00'5.2715"W	14742.23	157.735	0.12	-0.06	0.10	
19295.00	90.430	160.730	6279.53	14814.31	-13732.89	5616.62	1640032.97	14252712.79	39°14'57.5377"N	81°00'4.8792"W	14837.07	157.756	1.02	0.78	-0.66	

RECEIVED
Office of Oil and Gas
NOV 21 2015
WV Department of
Environmental Protection



Actual Wellpath Report

Neptune Unit 1H AWP Proj: 27483'

Page 9 of 14



REFERENCE WELLPATH IDENTIFICATION

Operator	ANTERO RESOURCES CORPORATION	Well	Neptune Unit 1H
Field	Ritchie	API	47-085-10537-0000
Facility	Husher Pad	Wellbore	Neptune Unit 1H AWB
Slot	Slot A		

WELLPATH DATA (298 stations)

MD [ft]	Inclination [°]	Azimuth [°]	TVD [ft]	Vert Sect [ft]	North [ft]	East [ft]	Grid East [US ft]	Grid North [US ft]	Latitude	Longitude	Closure Dist [ft]	Closure Dir [°]	DLS ["/100ft]	Build Rate ["/100ft]	Turn Rate ["/100ft]	Comments
19390.00	90.310	161.240	6278.91	14909.31	-13822.71	5647.57	1640063.91	14252623.01	39°14'56.6500"N	81°00'4.4858"W	14931.92	157.776	0.55	-0.13	0.54	
19484.00	90.220	161.580	6278.48	15003.31	-13911.80	5677.53	1640093.86	14252533.95	39°14'55.7695"N	81°00'4.1049"W	15025.73	157.799	0.37	-0.10	0.36	
19579.00	90.280	161.510	6278.06	15098.30	-14001.92	5707.61	1640123.92	14252443.87	39°14'54.8788"N	81°00'3.7226"W	15120.53	157.823	0.10	0.06	-0.07	
19674.00	90.340	161.530	6277.55	15193.29	-14092.02	5737.72	1640154.02	14252353.81	39°14'53.9883"N	81°00'3.3398"W	15215.33	157.846	0.07	0.06	0.02	
19768.00	90.220	161.070	6277.09	15287.29	-14181.05	5767.86	1640184.15	14252264.81	39°14'53.1083"N	81°00'2.9567"W	15309.16	157.867	0.51	-0.13	-0.49	
19862.00	90.120	160.980	6276.81	15381.29	-14269.94	5798.42	1640214.70	14252175.95	39°14'52.2297"N	81°00'2.5682"W	15403.02	157.886	0.14	-0.11	-0.10	
19957.00	90.250	160.380	6276.50	15476.29	-14359.59	5829.85	1640246.12	14252086.34	39°14'51.3436"N	81°00'2.1687"W	15497.91	157.903	0.65	0.14	-0.63	
20052.00	90.220	160.370	6276.11	15571.28	-14449.07	5861.76	1640278.01	14251996.89	39°14'50.4592"N	81°00'1.7631"W	15592.82	157.918	0.03	-0.03	-0.01	
20146.00	90.060	160.080	6275.89	15665.27	-14537.53	5893.56	1640309.80	14251908.47	39°14'49.5849"N	81°00'1.3589"W	15686.74	157.932	0.35	-0.17	-0.31	
20241.00	90.000	160.410	6275.84	15760.27	-14626.94	5925.67	1640341.90	14251819.10	39°14'48.7012"N	81°00'0.9508"W	15781.66	157.946	0.35	-0.06	0.35	
20336.00	90.030	160.690	6275.81	15855.27	-14716.52	5957.30	1640373.52	14251729.56	39°14'47.8158"N	81°00'0.5487"W	15876.57	157.962	0.30	0.03	0.29	
20431.00	89.970	159.950	6275.81	15950.26	-14805.97	5989.29	1640405.50	14251640.14	39°14'46.9317"N	81°00'0.1420"W	15971.49	157.976	0.78	-0.06	-0.78	
20525.00	89.820	159.200	6275.98	16044.23	-14894.06	6022.10	1640438.29	14251552.09	39°14'46.0611"N	80°59'59.7251"W	16065.45	157.985	0.81	-0.16	-0.80	
20620.00	89.910	160.110	6276.21	16139.21	-14983.13	6055.13	1640471.30	14251463.05	39°14'45.1807"N	80°59'59.3053"W	16160.41	157.995	0.96	0.09	0.96	
20715.00	91.200	161.440	6275.29	16234.20	-15072.82	6086.41	1640502.57	14251373.39	39°14'44.2942"N	80°59'58.9077"W	16255.29	158.011	1.95	1.36	1.40	
20810.00	89.910	160.510	6274.37	16329.19	-15162.63	6117.37	1640533.52	14251283.63	39°14'43.4066"N	80°59'58.5141"W	16350.15	158.028	1.67	-1.36	-0.98	
20905.00	89.660	160.010	6274.72	16424.18	-15252.04	6149.46	1640565.60	14251194.25	39°14'42.5228"N	80°59'58.1063"W	16445.08	158.041	0.59	-0.26	-0.53	
21000.00	89.630	160.070	6275.31	16519.17	-15341.34	6181.89	1640598.01	14251104.99	39°14'41.6403"N	80°59'57.6941"W	16540.02	158.053	0.07	-0.03	0.06	
21095.00	89.820	160.120	6275.77	16614.16	-15430.66	6214.23	1640630.34	14251015.70	39°14'40.7574"N	80°59'57.2830"W	16634.96	158.064	0.21	0.20	0.05	
21189.00	89.720	160.140	6276.14	16708.15	-15519.06	6246.18	1640662.28	14250927.34	39°14'39.8836"N	80°59'56.8769"W	16728.90	158.076	0.11	-0.11	0.02	
21284.00	89.940	160.060	6276.43	16803.14	-15608.39	6278.52	1640694.60	14250838.04	39°14'39.0007"N	80°59'56.4659"W	16823.84	158.087	0.25	0.23	-0.08	
21379.00	89.880	160.160	6276.58	16898.13	-15697.72	6310.84	1640726.91	14250748.75	39°14'38.1178"N	80°59'56.0552"W	16918.78	158.099	0.12	-0.06	0.11	
21474.00	89.910	159.780	6276.75	16993.11	-15786.98	6343.37	1640759.43	14250659.53	39°14'37.2356"N	80°59'55.6416"W	17013.73	158.109	0.40	0.03	-0.40	
21569.00	89.910	159.700	6276.90	17088.09	-15876.10	6376.27	1640792.32	14250570.44	39°14'36.3547"N	80°59'55.2235"W	17108.69	158.118	0.08	0.00	-0.08	
21664.00	90.000	160.770	6276.97	17183.09	-15965.50	6408.40	1640824.43	14250481.08	39°14'35.4711"N	80°59'54.8152"W	17203.63	158.130	1.13	0.09	1.13	
21758.00	89.880	160.360	6277.07	17277.08	-16054.14	6439.67	1640855.69	14250392.47	39°14'34.5950"N	80°59'54.4177"W	17297.54	158.143	0.45	-0.13	-0.44	
21853.00	89.970	160.280	6277.20	17372.08	-16143.59	6471.67	1640887.67	14250303.05	39°14'33.7109"N	80°59'54.0111"W	17392.47	158.155	0.13	0.09	-0.08	
21948.00	89.970	160.210	6277.25	17467.07	-16233.00	6503.78	1640919.77	14250213.68	39°14'32.8271"N	80°59'53.6030"W	17487.41	158.166	0.07	0.00	-0.07	
22043.00	90.000	160.140	6277.27	17562.06	-16322.37	6536.00	1640951.98	14250124.35	39°14'31.9438"N	80°59'53.1935"W	17582.35	158.177	0.08	0.03	-0.07	
22138.00	89.850	160.360	6277.40	17657.06	-16411.78	6568.10	1640984.07	14250034.97	39°14'31.0601"N	80°59'52.7855"W	17677.29	158.188	0.28	-0.16	0.23	

RECEIVED
 Office of Oil and Gas
 NOV 21 2025
 WV Department of
 Environmental Protection



Actual Wellpath Report

Neptune Unit 1H AWP Proj: 27483'

Page 10 of 14



REFERENCE WELLPATH IDENTIFICATION

Operator	ANTERO RESOURCES CORPORATION	Well	Neptune Unit 1H
Field	Ritchie	API	47-085-10537-0000
Facility	Husher Pad	Wellbore	Neptune Unit 1H AWB
Slot	Slot A		

WELLPATH DATA (298 stations)

MD [ft]	Inclination [°]	Azimuth [°]	TVD [ft]	Vert Sect [ft]	North [ft]	East [ft]	Grid East [US ft]	Grid North [US ft]	Latitude	Longitude	Closure Dist [ft]	Closure Dir [°]	DLS ["/100ft]	Build Rate ["/100ft]	Turn Rate ["/100ft]	Comments
22232.00	89.940	160.440	6277.57	17751.05	-16500.34	6599.63	1641015.59	14249946.45	39°14'30.1848"N	80°59'52.3848"W	17771.22	158.200	0.13	0.10	0.09	
22327.00	89.910	160.100	6277.69	17846.05	-16589.76	6631.70	1641047.64	14249857.07	39°14'29.3010"N	80°59'51.9772"W	17866.16	158.211	0.36	-0.03	-0.36	
22422.00	90.310	160.310	6277.51	17941.04	-16679.15	6663.87	1641079.80	14249767.72	39°14'28.4175"N	80°59'51.5683"W	17961.10	158.222	0.48	0.42	0.22	
22517.00	90.120	160.310	6277.15	18036.03	-16768.59	6695.88	1641111.80	14249678.31	39°14'27.5335"N	80°59'51.1615"W	18056.04	158.233	0.20	-0.20	0.00	
22612.00	90.090	160.310	6276.98	18131.03	-16858.04	6727.89	1641143.79	14249588.90	39°14'26.6494"N	80°59'50.7547"W	18150.97	158.244	0.03	-0.03	0.00	
22707.00	90.150	160.400	6276.78	18226.02	-16947.51	6759.83	1641175.72	14249499.47	39°14'25.7651"N	80°59'50.3488"W	18245.91	158.254	0.11	0.06	0.09	
22801.00	90.280	160.110	6276.43	18320.01	-17035.98	6791.58	1641207.46	14249411.03	39°14'24.8906"N	80°59'49.9453"W	18339.85	158.265	0.34	0.14	-0.31	
22896.00	90.280	160.260	6275.96	18415.00	-17125.35	6823.79	1641239.65	14249321.69	39°14'24.0072"N	80°59'49.5360"W	18434.80	158.275	0.16	0.00	0.16	
22991.00	90.280	160.270	6275.50	18510.00	-17214.77	6855.86	1641271.72	14249232.31	39°14'23.1234"N	80°59'49.1284"W	18529.74	158.285	0.01	0.00	0.01	
23086.00	90.340	160.240	6274.98	18604.99	-17304.19	6887.96	1641303.80	14249142.93	39°14'22.2397"N	80°59'48.7205"W	18624.68	158.295	0.07	0.06	-0.03	
23181.00	90.370	160.300	6274.40	18699.98	-17393.61	6920.03	1641335.86	14249053.54	39°14'21.3559"N	80°59'48.3129"W	18719.62	158.305	0.07	0.03	0.06	
23275.00	90.150	160.160	6273.97	18793.97	-17482.06	6951.82	1641367.64	14248965.12	39°14'20.4815"N	80°59'47.9089"W	18813.57	158.315	0.28	-0.23	-0.15	
23370.00	90.370	161.670	6273.54	18888.97	-17571.84	6982.88	1641398.69	14248875.38	39°14'19.5942"N	80°59'47.5142"W	18908.47	158.328	1.61	0.23	1.59	
23465.00	90.310	161.250	6272.97	18983.96	-17661.91	7013.09	1641428.88	14248785.35	39°14'18.7040"N	80°59'47.1303"W	19003.33	158.343	0.45	-0.06	-0.44	
23560.00	90.310	161.470	6272.46	19078.96	-17751.92	7043.45	1641459.23	14248695.37	39°14'17.8143"N	80°59'46.7445"W	19098.19	158.358	0.23	0.00	0.23	
23655.00	90.250	161.480	6272.00	19173.95	-17842.00	7073.64	1641489.40	14248605.33	39°14'16.9240"N	80°59'46.3609"W	19193.05	158.374	0.06	-0.06	0.01	
23749.00	90.340	161.030	6271.51	19267.95	-17931.01	7103.84	1641519.60	14248516.36	39°14'16.0442"N	80°59'45.9771"W	19286.93	158.388	0.49	0.10	-0.48	
23844.00	90.310	161.380	6270.97	19362.95	-18020.94	7134.45	1641550.19	14248426.46	39°14'15.1553"N	80°59'45.5881"W	19381.82	158.402	0.37	-0.03	0.37	
23939.00	90.180	161.350	6270.57	19457.94	-18110.96	7164.81	1641580.54	14248336.48	39°14'14.2655"N	80°59'45.2024"W	19476.69	158.416	0.14	-0.14	-0.03	
24034.00	90.220	161.350	6270.24	19552.94	-18200.97	7195.19	1641610.90	14248246.50	39°14'13.3759"N	80°59'44.8163"W	19571.57	158.430	0.04	0.04	0.00	
24129.00	90.280	161.500	6269.82	19647.94	-18291.02	7225.45	1641641.15	14248156.49	39°14'12.4858"N	80°59'44.4318"W	19666.44	158.445	0.17	0.06	0.16	
24223.00	90.250	161.370	6269.39	19741.93	-18380.13	7255.38	1641671.07	14248067.42	39°14'11.6051"N	80°59'44.0515"W	19760.31	158.459	0.14	-0.03	-0.14	
24318.00	90.740	161.490	6268.57	19836.92	-18470.18	7285.63	1641701.31	14247977.40	39°14'10.7150"N	80°59'43.6671"W	19855.18	158.473	0.53	0.52	0.13	
24413.00	92.370	161.860	6265.99	19931.88	-18560.33	7315.48	1641731.15	14247887.29	39°14'9.8240"N	80°59'43.2877"W	19949.99	158.488	1.76	1.72	0.39	
24508.00	90.710	161.550	6263.44	20026.83	-18650.49	7345.29	1641760.95	14247797.17	39°14'8.9329"N	80°59'42.9089"W	20044.80	158.504	1.78	-1.75	-0.33	
24603.00	90.650	161.530	6262.31	20121.82	-18740.60	7375.37	1641791.02	14247707.10	39°14'8.0423"N	80°59'42.5267"W	20139.66	158.518	0.07	-0.06	-0.02	
24697.00	90.620	160.970	6261.27	20215.81	-18829.60	7405.59	1641821.22	14247618.13	39°14'7.1625"N	80°59'42.1428"W	20233.55	158.531	0.60	-0.03	-0.60	
24792.00	90.800	161.020	6260.09	20310.80	-18919.42	7436.52	1641852.14	14247528.35	39°14'6.2748"N	80°59'41.7497"W	20328.46	158.542	0.20	0.19	0.05	
24887.00	90.460	161.230	6259.04	20405.80	-19009.30	7467.25	1641882.86	14247438.50	39°14'5.3864"N	80°59'41.3592"W	20423.35	158.554	0.42	-0.36	0.22	
24982.00	90.220	161.130	6258.48	20500.79	-19099.22	7497.90	1641913.49	14247348.62	39°14'4.4976"N	80°59'40.9698"W	20518.25	158.566	0.27	-0.25	-0.11	

RECEIVED
 Office of Oil and Gas
 NOV 21 2025
 WV Department of
 Environmental Protection



Actual Wellpath Report

Neptune Unit 1H AWP Proj: 27483'

Page 11 of 14



REFERENCE WELLPATH IDENTIFICATION

Operator	ANTERO RESOURCES CORPORATION	Well	Neptune Unit 1H
Field	Ritchie	API	47-085-10537-0000
Facility	Husher Pad	Wellbore	Neptune Unit 1H AWB
Slot	Slot A		

WELLPATH DATA (298 stations) † = interpolated, ‡ = extrapolated station

MD [ft]	Inclination [°]	Azimuth [°]	TVD [ft]	Vert Sect [ft]	North [ft]	East [ft]	Grid East [US ft]	Grid North [US ft]	Latitude	Longitude	Closure Dist [ft]	Closure Dir [°]	DLS [°/100ft]	Build Rate [°/100ft]	Turn Rate [°/100ft]	Comments
25077.00	90.370	161.140	6257.99	20595.79	-19189.12	7528.62	1641944.20	14247258.76	39°14'3.6091"N	80°59'40.5795"W	20613.16	158.578	0.16	0.16	0.01	
25171.00	89.660	161.310	6257.97	20689.79	-19278.11	7558.87	1641974.44	14247169.79	39°14'2.7294"N	80°59'40.1951"W	20707.06	158.590	0.78	-0.76	0.18	
25266.00	89.720	161.230	6258.48	20784.79	-19368.08	7589.37	1642004.93	14247079.86	39°14'1.8402"N	80°59'39.8075"W	20801.95	158.602	0.11	0.06	-0.08	
25361.00	89.380	161.530	6259.23	20879.78	-19458.11	7619.71	1642035.25	14246989.87	39°14'0.9504"N	80°59'39.4221"W	20896.84	158.615	0.48	-0.36	0.32	
25456.00	89.630	161.390	6260.05	20974.77	-19548.17	7649.91	1642065.45	14246899.84	39°14'0.0602"N	80°59'39.0383"W	20991.72	158.628	0.30	0.26	-0.15	
25551.00	89.630	161.600	6260.66	21069.77	-19638.26	7680.06	1642095.59	14246809.79	39°13'59.1697"N	80°59'38.6552"W	21086.60	158.641	0.22	0.00	0.22	
25646.00	89.450	161.060	6261.42	21164.76	-19728.26	7710.47	1642125.98	14246719.83	39°13'58.2802"N	80°59'38.2689"W	21181.49	158.653	0.60	-0.19	-0.57	
25741.00	89.450	161.500	6262.34	21259.76	-19818.23	7740.96	1642156.46	14246629.90	39°13'57.3909"N	80°59'37.8815"W	21276.39	158.664	0.46	0.00	0.46	
25836.00	90.150	161.540	6262.67	21354.75	-19908.33	7771.07	1642186.56	14246539.84	39°13'56.5004"N	80°59'37.4989"W	21371.27	158.677	0.74	0.74	0.04	
25931.00	89.630	161.280	6262.85	21449.75	-19998.37	7801.36	1642216.83	14246449.83	39°13'55.6104"N	80°59'37.1141"W	21466.16	158.689	0.61	-0.55	-0.27	
26026.00	90.370	161.050	6262.85	21544.74	-20088.28	7832.03	1642247.49	14246359.95	39°13'54.7217"N	80°59'36.7244"W	21561.07	158.700	0.82	0.78	-0.24	
26121.00	90.400	160.930	6262.21	21639.74	-20178.10	7862.97	1642278.42	14246270.17	39°13'53.8339"N	80°59'36.3313"W	21655.99	158.710	0.13	0.03	-0.13	
26216.00	90.120	161.040	6261.78	21734.74	-20267.91	7893.92	1642309.36	14246180.39	39°13'52.9462"N	80°59'35.9380"W	21750.92	158.720	0.32	-0.29	0.12	
26310.00	90.580	161.270	6261.21	21828.74	-20356.87	7924.29	1642339.71	14246091.47	39°13'52.0669"N	80°59'35.5523"W	21844.83	158.731	0.55	0.49	0.24	
26405.00	91.010	162.920	6259.89	21923.71	-20447.26	7953.49	1642368.90	14246001.12	39°13'51.1735"N	80°59'35.1812"W	21939.65	158.745	1.79	0.45	1.74	
26500.00	90.250	162.250	6258.84	22018.66	-20537.90	7981.92	1642397.32	14245910.52	39°13'50.2776"N	80°59'34.8200"W	22034.44	158.762	1.07	-0.80	-0.71	
26595.00	90.280	161.390	6258.40	22113.65	-20628.15	8011.56	1642426.95	14245820.30	39°13'49.3855"N	80°59'34.4435"W	22129.30	158.775	0.91	0.03	-0.91	
26690.00	90.220	161.590	6257.99	22208.64	-20718.24	8041.72	1642457.10	14245730.25	39°13'48.4951"N	80°59'34.0603"W	22224.19	158.786	0.22	-0.06	0.21	
26785.00	90.430	162.110	6257.45	22303.63	-20808.51	8071.31	1642486.68	14245640.01	39°13'47.6029"N	80°59'33.6843"W	22319.05	158.799	0.59	0.22	0.55	
26880.00	90.460	161.270	6256.71	22398.61	-20898.70	8101.15	1642516.51	14245549.86	39°13'46.7115"N	80°59'33.3052"W	22413.93	158.812	0.88	0.03	-0.88	
26975.00	90.460	160.760	6255.95	22493.61	-20988.53	8132.06	1642547.40	14245460.07	39°13'45.8236"N	80°59'32.9126"W	22508.86	158.821	0.54	0.00	-0.54	
27070.00	90.370	160.410	6255.26	22588.61	-21078.12	8163.64	1642578.97	14245370.51	39°13'44.9380"N	80°59'32.5114"W	22603.81	158.828	0.38	-0.09	-0.37	
27165.00	90.250	160.070	6254.75	22683.60	-21167.53	8195.75	1642611.07	14245281.14	39°13'44.0543"N	80°59'32.1033"W	22698.78	158.834	0.38	-0.13	-0.36	
27259.00	90.890	159.980	6253.81	22777.58	-21255.87	8227.86	1642643.17	14245192.84	39°13'43.1812"N	80°59'31.6954"W	22792.75	158.839	0.69	0.68	-0.10	
27354.00	90.680	160.460	6252.51	22872.56	-21345.25	8260.01	1642675.30	14245103.49	39°13'42.2977"N	80°59'31.2870"W	22887.72	158.845	0.55	-0.22	0.51	
27449.00	90.520	160.240	6251.52	22967.55	-21434.72	8291.95	1642707.23	14245014.06	39°13'41.4134"N	80°59'30.8812"W	22982.68	158.851	0.29	-0.17	-0.23	
27458.00	90.490	160.300	6251.44	22976.55	-21443.19	8294.99	1642710.27	14245005.59	39°13'41.3297"N	80°59'30.8426"W	22991.68	158.852	0.75	-0.33	0.67	
27483.00†	90.490	160.300	6251.22	23001.55	-21466.72	8303.42	1642718.69	14244982.07	39°13'41.0970"N	80°59'30.7355"W	23016.67	158.853	0.00	0.00	0.00	Projected MD at TD: 27483'

RECEIVED
 Office of Oil and Gas
 NOV 21 2025
 WV Department of
 Environmental Protection



Actual Wellpath Report

Neptune Unit 1H AWP Proj: 27483'

Page 12 of 14



REFERENCE WELLPATH IDENTIFICATION

Operator	ANTERO RESOURCES CORPORATION	Well	Neptune Unit 1H
Field	Ritchie	API	47-085-10537-0000
Facility	Husher Pad	Wellbore	Neptune Unit 1H AWB
Slot	Slot A		

HOLE & CASING SECTIONS - Ref Wellbore: Neptune Unit 1H AWB Ref Wellpath: Neptune Unit 1H AWP Proj: 27483'

String/Diameter	Start MD [ft]	End MD [ft]	Interval [ft]	Start TVD [ft]	End TVD [ft]	Start N/S [ft]	Start E/W [ft]	End N/S [ft]	End E/W [ft]
20in Conductor	30.00	130.00	100.00	30.00	130.00	0.00	0.00	0.11	-0.02
17.5in Open Hole	130.00	528.00	398.00	130.00	528.00	0.11	-0.02	-0.38	0.37
13.375in Casing Surface	30.00	508.00	478.00	30.00	508.00	0.00	0.00	-0.33	0.31
12.25in Open Hole	528.00	6351.00	5823.00	528.00	5849.81	-0.38	0.37	-1662.30	1397.82
9.625in Casing Intermediate	30.00	6321.00	6291.00	30.00	5823.29	0.00	0.00	-1652.02	1388.30
8.5in Open Hole	6351.00	27483.00	21132.00	5849.81	6251.22	-1662.30	1397.82	-21466.72	8303.42
5.5in Casing Production	30.00	27463.00	27433.00	30.00	6251.39	0.00	0.00	-21447.89	8296.68

TARGETS

Name	TVD [ft]	North [ft]	East [ft]	Grid East [US ft]	Grid North [US ft]	Latitude	Longitude	Shape
Neptune Unit 1H POE Rev-2	6187.00	-1959.06	1564.08	1635982.06	14264481.88	39°16'53.9038"N	81°00'56.4178"W	point
Neptune Unit 1H BHL Rev-2	6229.00	-21471.91	8309.79	1642725.06	14244976.88	39°13'41.0458"N	80°59'30.6546"W	point
Neptune Unit 1H LP Rev-2	6229.00	-2162.57	1634.43	1636052.39	14264278.46	39°16'51.8925"N	81°00'55.5226"W	point
Neptune Unit 1H 50' L/R Hard Line	7000.00	-11705.47	4933.47	1639350.10	14254739.40	39°15'17.5762"N	81°00'13.5639"W	rectangle

2D Rectangle 20667.2 x 100.

RECEIVED
 Office of Oil and Gas
 NOV 21 2025
 WV Department of
 Environmental Protection



Actual Wellpath Report

Neptune Unit 1H AWP Proj: 27483'

Page 13 of 14



REFERENCE WELLPATH IDENTIFICATION

Operator	ANTERO RESOURCES CORPORATION	Well	Neptune Unit 1H
Field	Ritchie	API	47-085-10537-0000
Facility	Husher Pad	Wellbore	Neptune Unit 1H AWB
Slot	Slot A		

WELLPATH COMPOSITION - Ref Wellbore: Neptune Unit 1H AWB Ref Wellpath: Neptune Unit 1H AWP Proj: 27483'

Start MD [ft]	End MD [ft]	Positional Uncertainty Model	Log Name/Comment	Wellbore	Survey Date
30.00	373.00	Gyrodata 2015 - GC+WIR+DPIPE	01 Gyrodata MS Gyro <17-1/2"> (100'-373')	Neptune Unit 1H AWB	3/3/2025
373.00	6277.00	BH NaviTrak (2019) (Axial Corr+HRGM)	02 APS EM <12-1/4"> (373')(592'-6277')	Neptune Unit 1H AWB	3/3/2025
6277.00	27483.00	BH AutoTrak Curve/eXpress (2019) (Axial Corr+HRGM)	03 BH Lucida (Axial) <8-1/2"> (6277')(6393'-27458')	Neptune Unit 1H AWB	3/17/2025

RECEIVED
 Office of Oil and Gas
 NOV 21 2025
 WV Department of
 Environmental Protection



Actual Wellpath Report

Neptune Unit 1H AWP Proj: 27483'

Page 14 of 14



REFERENCE WELLPATH IDENTIFICATION

Operator	ANTERO RESOURCES CORPORATION	Well	Neptune Unit 1H
Field	Ritchie	API	47-085-10537-0000
Facility	Husher Pad	Wellbore	Neptune Unit 1H AWB
Slot	Slot A		

COMMENTS

Wellpath general comments

API: 47-085-10537-0000
BH Job #: 112579067
Rig: H&P 519
Duration: 3/19/2025-3/23/2025
Gyrodatta MS Gyro <17-1/2"> (100'-373')
APS EM <12-1/4"> (373')(592'-6277')
BH Lucida (Axial) <8-1/2"> (6277')(6393'-27458')
Sycamore: 6485' MD
Middlesex: 6607' MD
Burkett: 6777' MD
Tully: 6836' MD
Marcellus POE: 6850' MD
Projected MD at TD: 27483'

RECEIVED
Office of Oil and Gas
NOV 21 2025
WV Department of
Environmental Protection