

Latitude

39 07 30

→ 7.5' loc
K124124/95

81 0 230

Longitude

Topo Location

7.5' Loc. 0.66S 15' Loc. 354S
2.05W (calc.) 4.28W

Company McCullough Murphy Oil Co.

Farm John Wolf 1

15' Quad Harrisville EC
(sec.)

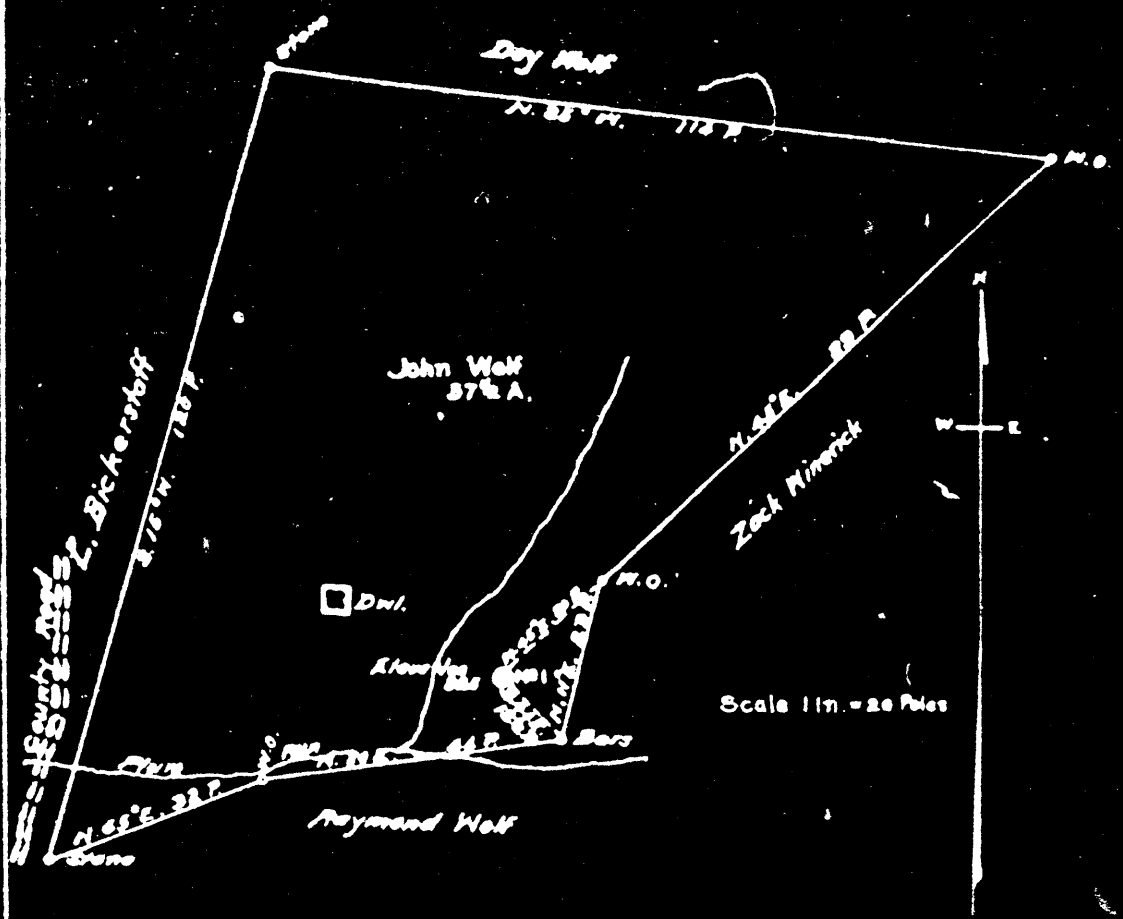
7.5' Quad Smithville

District Murphy

WELL LOCATION PLAT

County 085 Permit 30196

OF THE McCULLOUGH-MURPHY A OF PENNSYLVANIA, W.M. ON
 THE JOHN WOLF FARM CONSISTING OF 37 1/2 ACRES, LOCATED
 IN MURPHY DISTRICT, MITCHELL COUNTY, W.VA.



I, the undersigned, shows all the information by the oil and gas...

Murphy District, Ritchie County, W. Va.

RIT-196-A

McCullough Murphy Oil Co., Pemsboro, W. Va. (J. B. Murphy, Mgr.)

On 57½ acres, Mahone, W. Va.; surface owned by John Wolf, Mahone, W. Va.
Elevation, 825'.

13" conductor, 16'; 10" casing, 300'; 6-5/8", 1050'; 2" tubing, 1850'.

Abandonment reported to Dept. of Mines July 23, 1935.

	Top.	Bottom.
Maxton Sand	1550	- 1600
Big Lime	1600	- 1640
Keener Sand, to bottom	1720	- 1745

196A

Murphy District, Ritchie County, W. Va.
McCullough Murphy Oil Co., Pennsboro, W. Va. (J. B. Murphy, Mgr.)
On $57\frac{1}{2}$ acres, Mahone, W. Va.; surface owned by John Wolf, Mahone, W. Va.
Elevation, 825'.
13" conductor, 16'; 10" casing, 300'; 6-5/8", 1050'; 2" tubing, 1850'.
Abandonment reported to Dept. of Mines July 23, 1935.

	Top.	Bottom.
Maxton Sand	1550	- 1600
Big Line	1600	- 1640
Keener Sand, to bottom	1720	- 1745

Murphy District, Ritchie County, W. Va.

McCullough Murphy Oil Co., Pennsboro, W. Va. (J. B. Murphy, Mgr.)

On 57½ acres, Mahone, W. Va.; surface owned by John Wolf, Mahone, W. Va.
Elevation, 825'.

13" conductor, 16'; 10" casing, 300'; 6-5/8", 1050'; 2" tubing, 1850'.

Abandonment reported to Dept. of Mines July 23, 1935.

	Top.	Bottom.
Maxton Sand	1550	- 1600
Big Lime	1600	- 1640
Keener Sand, to bottom	1720	- 1745