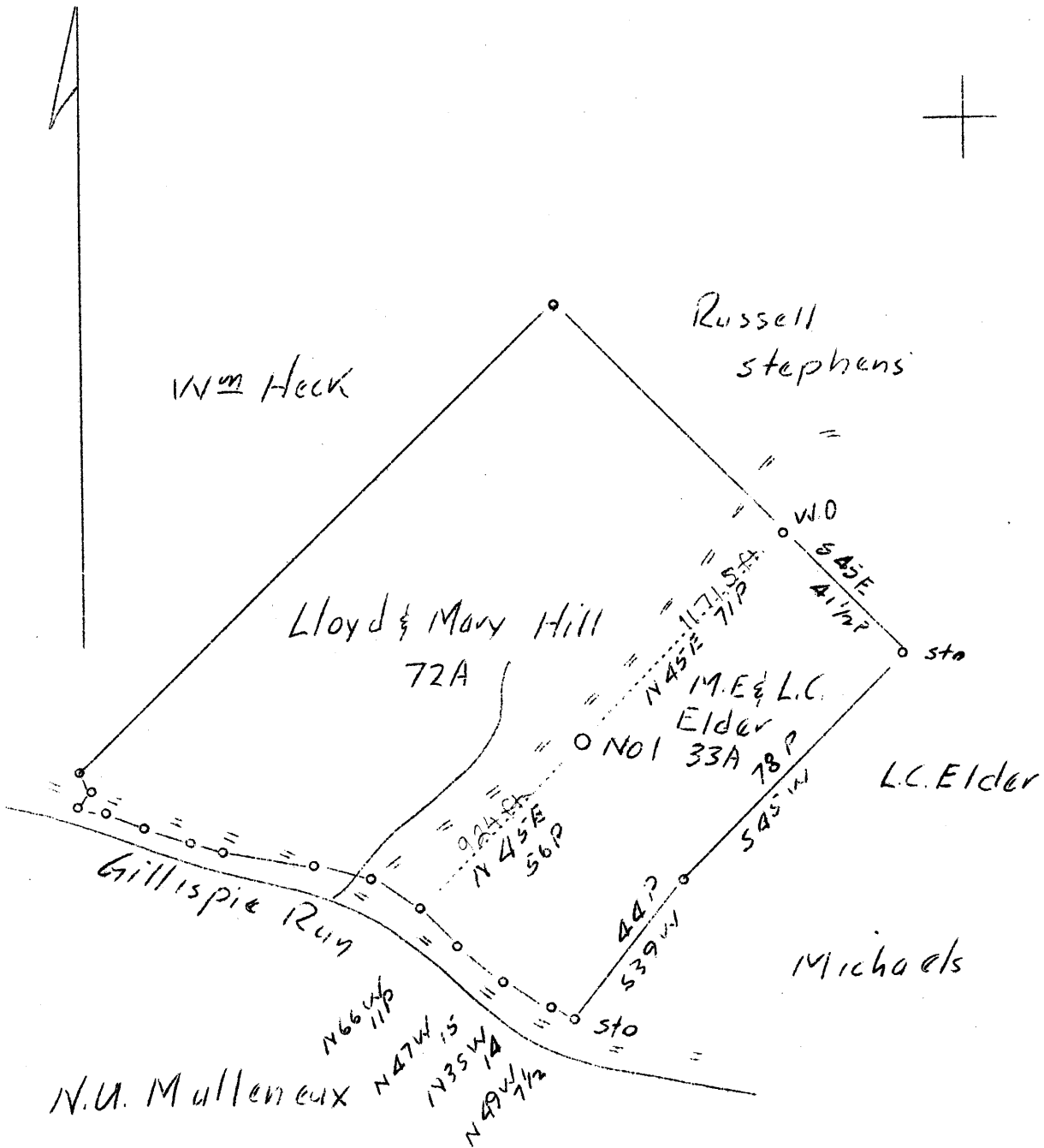


LATITUDE 39° 10'

LONGITUDE 81° 10'



1.0 W  
1.938.

Abd.

Company	American Oil Development <sup>ment</sup> Co.
Address	Sistersville, W.Va.
Farm	Lloyd and Mary Hill M.E. and L.C. Elder
Tract	Acres 72 & 33 Lease No.
Well (Farm) No.	1 Serial No.
Elevation (Spirit Level)	974
Quadrangle	Harrisville <b>W 6</b>
County	Ritchie District Grant
Engineer	J.V. Dunbar
Engineer's Registration No.	65
File No.	C-23-L Drawing No.
Date	Sept. 28, 1937 Scale 1"=40 Rods.

STATE OF WEST VIRGINIA  
 Department of Mines  
 OIL AND GAS DIVISION  
 CHARLESTON

WELL LOCATION MAP

File No. RIT-331A

+ Denotes location of well on United States Topographic Maps, scale 1 to 62,500, latitude and longitude lines being represented by border lines as shown.

— Denotes one inch spaces on border line of original tracing.