

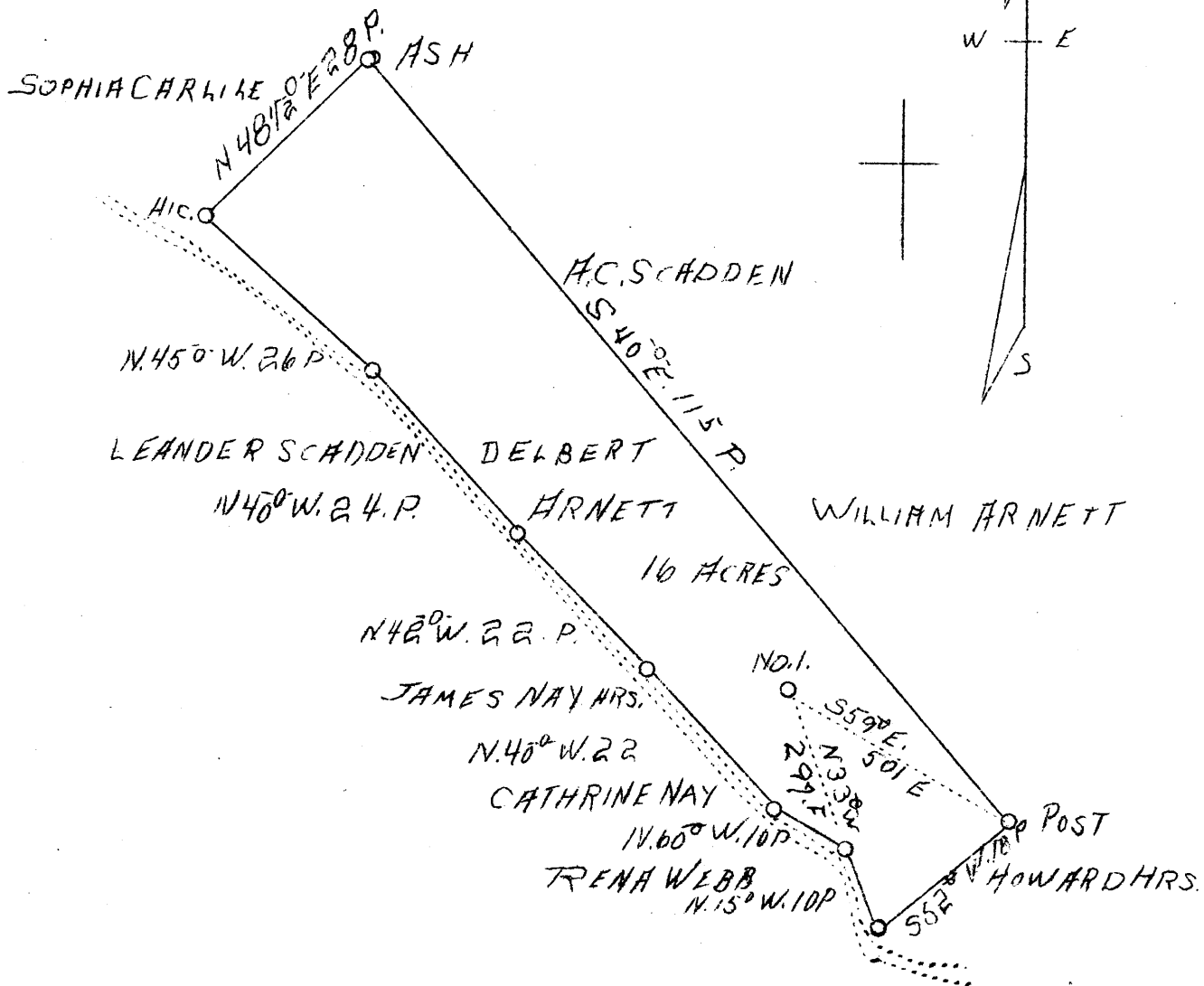
1 2 3

LATITUDE 39° 20'

1

2

3



LONGITUDE 81° 05'

3.3 S  
2.1 W

ABP.

Company Norris and Co.  
 Address Pennsboro, W. Va.  
 Farm Delbert Arnett  
 Tract 1 Acres 16 Lease No.  
 Well (Farm) No. 1 Serial No.  
 Elevation (Spirit Level) 1177  
 Quadrangle St. Marys S. E. S. C.  
 County Ritchie District Grant  
 Engineer J. V. Dunbar  
 Engineer's Registration No. 65  
 File No c-23-L Drawing No.  
 Date 6-20-38 Scale 1''-20 Rds.

STATE OF WEST VIRGINIA  
 DEPARTMENT OF MINES  
 OIL AND GAS DIVISION  
 CHARLESTON

WELL LOCATION MAP

File No. Rit-358-A

x Denotes location of well on United States  
 Topographic Maps, scale 1 to 62,500, lat-  
 itude and longitude lines being represented  
 by border lines as shown.

- Denotes one inch spaces on border line  
 of original tracing.

RECEIVED  
JUN 28 1938  
WEST VIRGINIA STATE  
GEORGETOWN, W. VA.