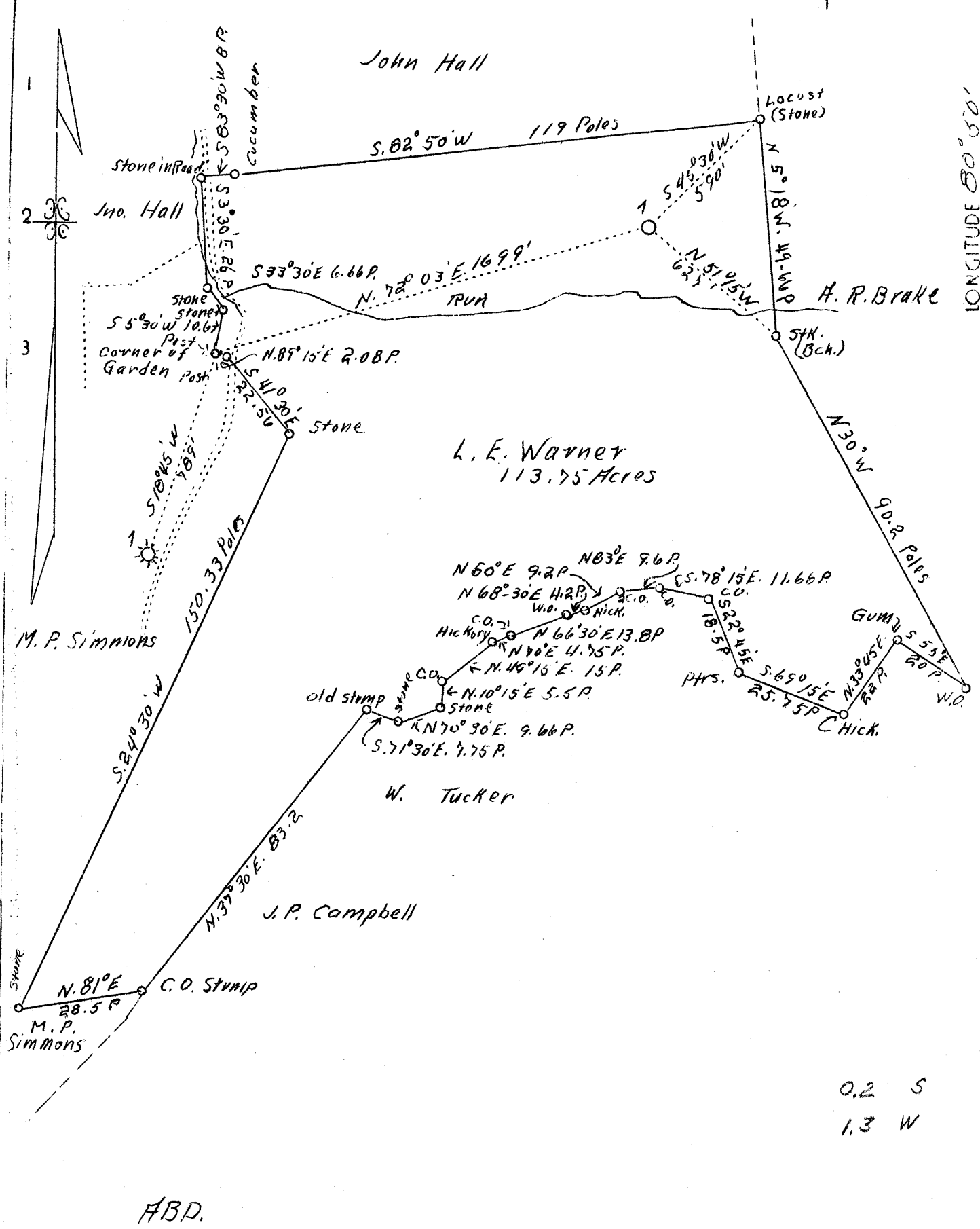


1 2 3 LATITUDE 39° 5'

LONGITUDE 80° 50'



0.2 S
1.3 W

ABD.

Company	W. F. Carmichael
Address	Parkersburg, W. Va. (R-21)
Farm	L. E. Warner
Acres	113.75
Well (Farm) No.	1
Elevation (S.P.)	1133.7
Quadrangle	Holbrook S. C.
County	Ritchie
District	Union
Engineer	J. V. Dunbar
Eng. Reg. No.	65
File No.	C.23 -
Date	June 14, 1938
Scale	1" = 30 poles = 495'

STATE OF WEST VIRGINIA
 Department of Mines
 OIL & GAS DIVISION
 Charleston

WELL LOCATION MAP

File No. Rit-360-A

X Denotes location of well on U. S. Topographic Maps, scale 1 to 62,500, latitude and longitude lines being represented by border lines as shown.

- Denotes one inch spaces on border line of original tracing.

RECEIVED
FEB 27 1938
U.S. DEPARTMENT OF AGRICULTURE
WASHINGTON, D.C.