

LATITUDE 39° 05'

39° 07' 30" (7/2)

1+
2+
3+
9+

LONGITUDE 81° 15'

W.A. LEWIS

E.J. FURR

TRACT NO. 1
73 a

J.M. FURR

TRACT NO. 2
35 a

A.J. SHEPHERD

TRACT NO. 3

ABANDONMENT

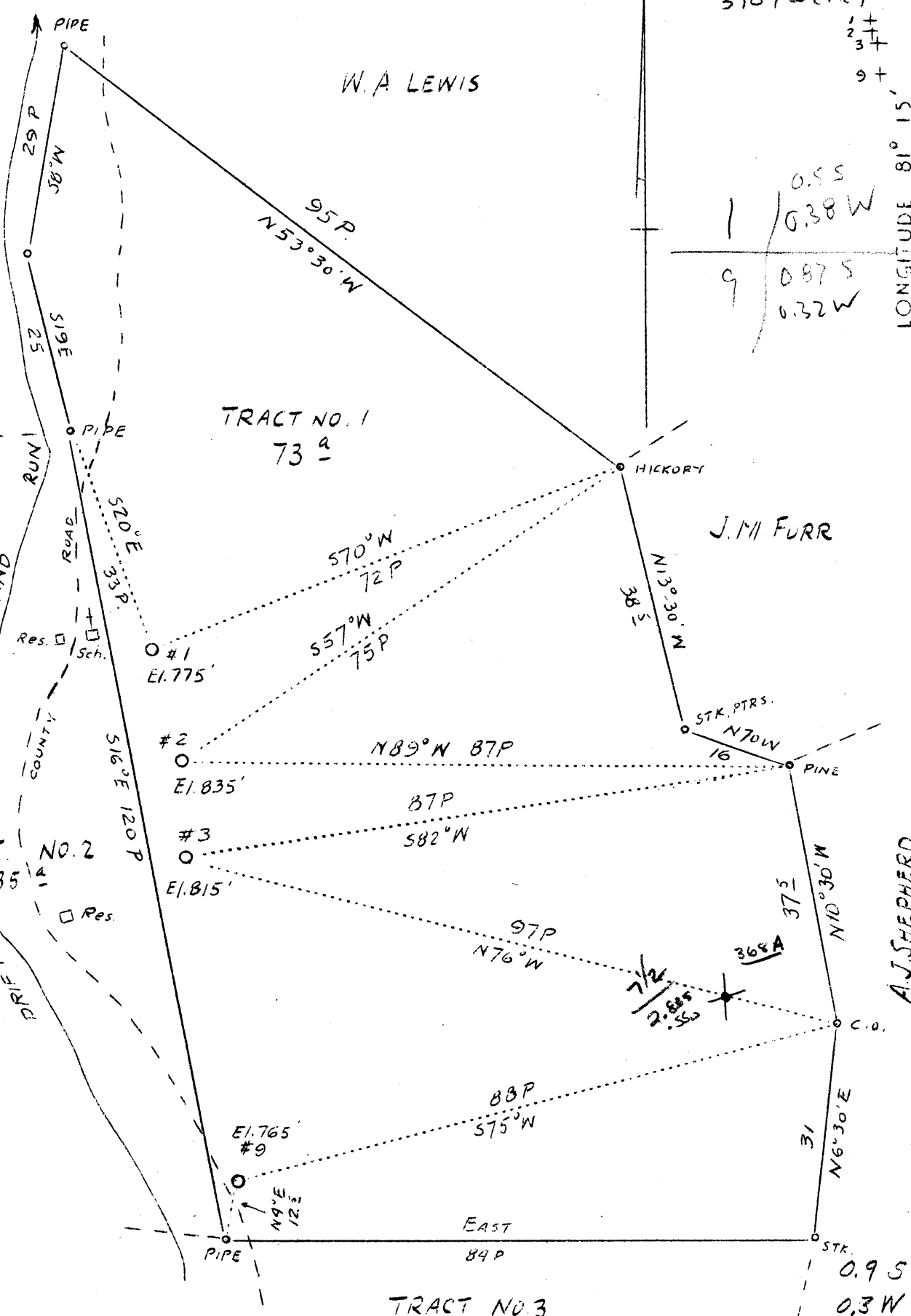
Company Smith, Feisk & Pierson
 Address Viker, R.D. No. 2 W.V.
 Firm First Citizens Bank of
 Pennington E. A. Rinehart
 Rec.
 Tract 1 Acres 73
 Well (Farm) Nos. 1, 2, 3
 Elevation (Spirit Level) #1-775;
 No 2-835; #3-815
 Quadrangle Elizabeth
 County Ritchie
 District Murphy
 Engineer J. E. & Robt. Anderson
 Engineer's Registration No. 296
 Date July 17, 1937
 Scale Lin--20p

STATE OF WEST VIRGINIA
 Department of Mines
 OIL AND GAS DIVISION
 Charleston

WELL LOCATION MAP

File No. RIT- 367 - WELL #1-A
308 - " 4 A
370 - " 9 A

x Denotes location of well on United States Topographic Map, scale 1 to 62,500, latitude and longitude lines being represented by border lines as shown.
 - Denotes one inch spaces on border line of original tracing.



RECEIVED
AUG 29 1938
GENERAL INVESTIGATIVE
DIVISION