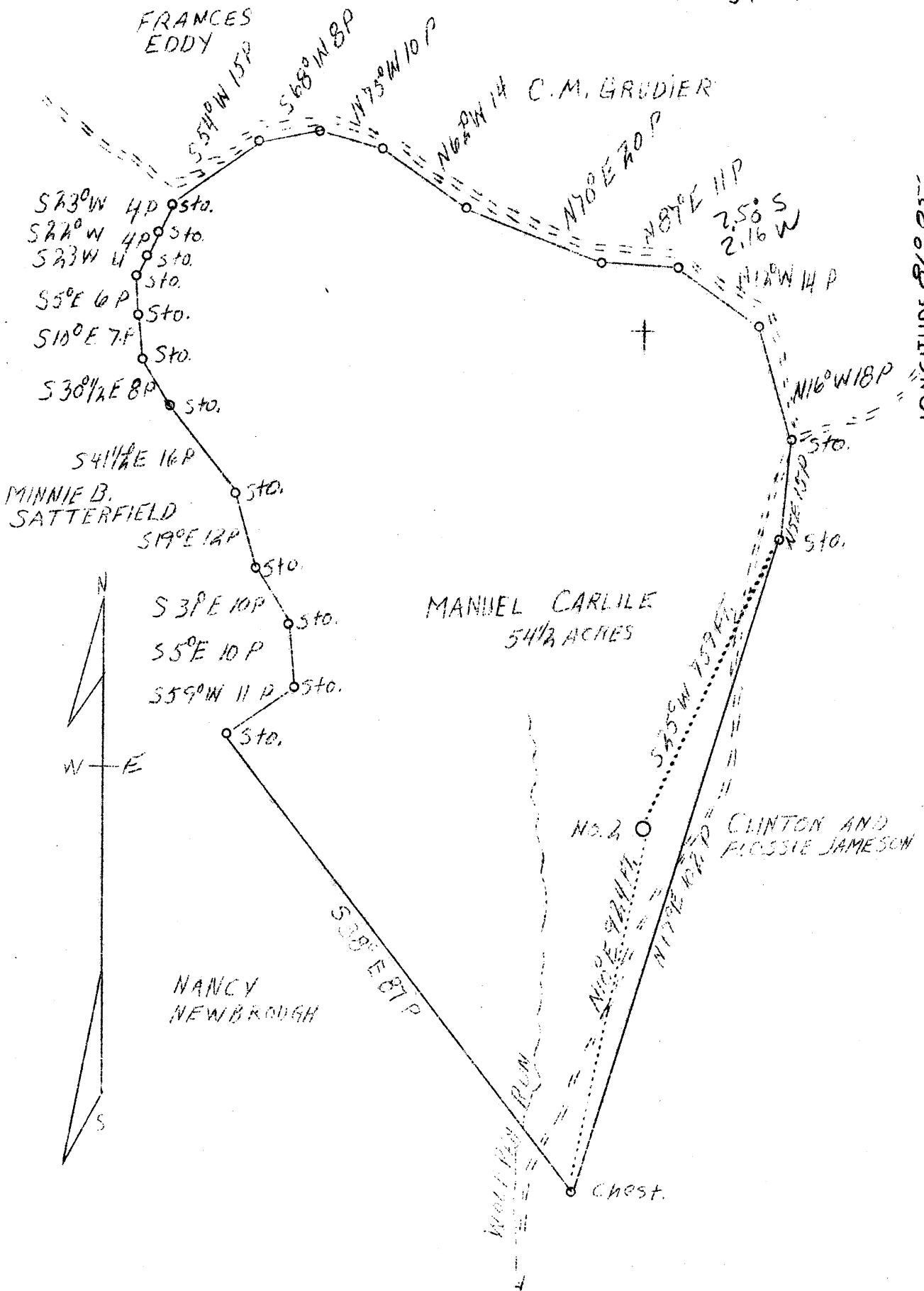


LATITUDE 39° 20'

LONGITUDE 81° 05'



SURVEYED AND PLATTED BY ROBERT CHALENT FINE, W.V.A.

Company	Majestic Oil & Gas Co.,	STATE OF WEST VIRGINIA
Address	46 W. 96th St., New York City	Department of Mines
Farm	Manuel Carlile	OIL & GAS DIVISION
Tract	One	Charleston
Acres	54-1/2	
Well (Farm) No.	2	WELL LOCATION MAP
Elevation (SL)	1012	File No. <u>RIT-376-A</u>
Quadrangle	St. Marys South C	
County	Ritchie	
District	Grant	
Engineer	J. V. Dunbar	
Eng. Reg. No.	65	
File No.	C-23-L	
Date	April 26, 1939	
Scale	20 rods to 1"	

x Denotes location of well on U. S. Topographic Maps, scale 1 to 62,500, latitude and longitude lines being represented by border lines as shown.

- Denotes one inch spaces on border line of original tracing.