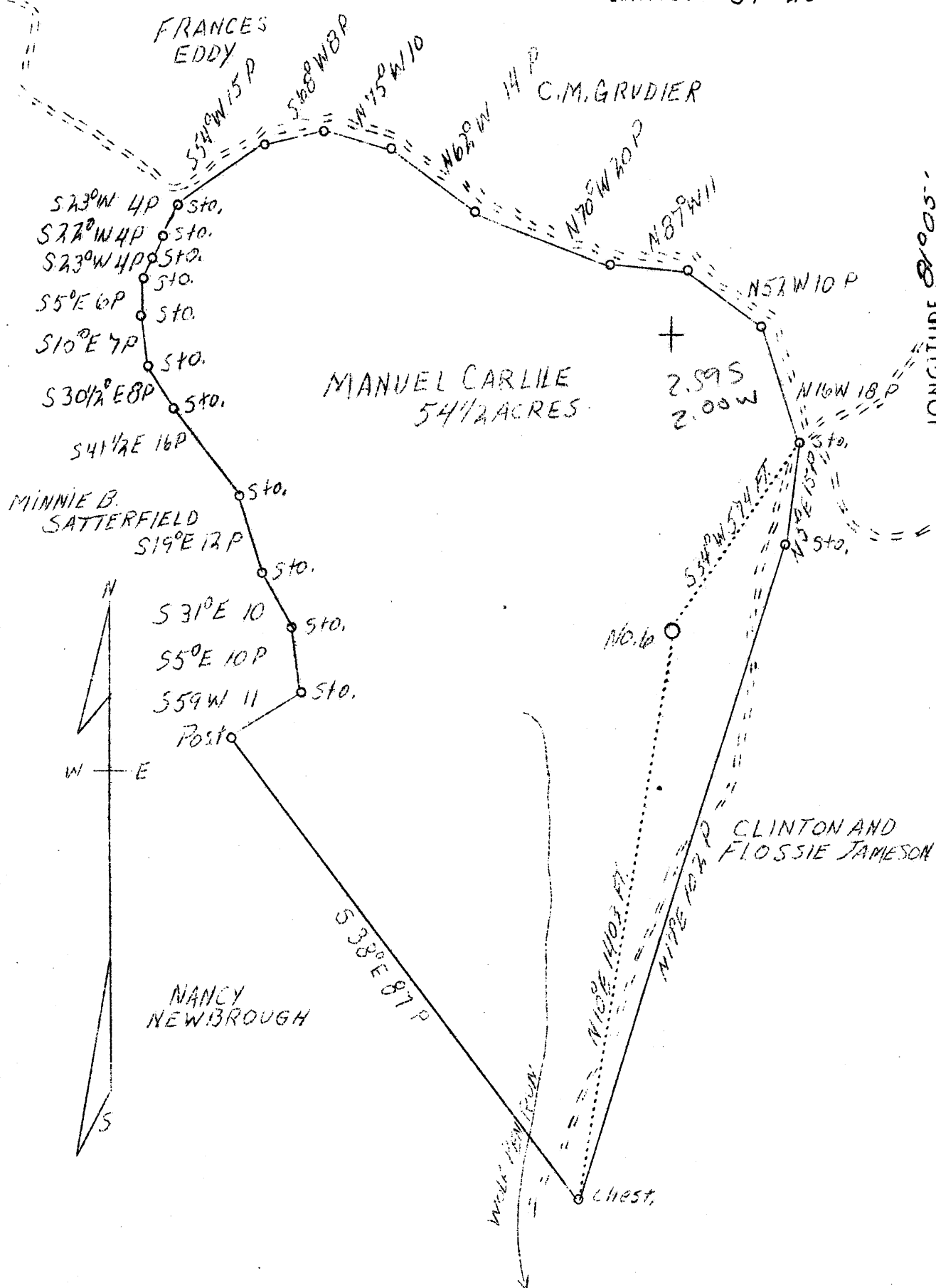


LATITUDE 39° 20'

LONGITUDE 81° 05'



SURVEYED AND PLATTED BY ROBERT L. HALFANT PIKE W.V.A.

Company	Majestic Oil & Gas Co.
Address	46 W. 96th St., New York City
Farm	Manuel Carlile
Tract	One
Acres	54-1/2
Well (Farm) No.	6
Elevation (SL)	1035
Quadrangle	St. Marys <u>South C</u>
County	Ritchie
District	Grant
Engineer	J. V. Dunbar
Eng. Reg. No.	65
Fiel No.	C-23-L
Date	April 25, 1939
Scale	20 rods to 1 inch

STATE OF WEST VIRGINIA
 Department of Mines
 OIL & GAS DIVISION
 Charleston

WELL LOCATION MAP

File No. R14-397-17

x Denotes location of well on U. S. Topographic Maps, scale 1 to 62,500, latitude and longitude lines being represented by border lines as shown.

- Denotes one inch spaces on border line of original tracing.