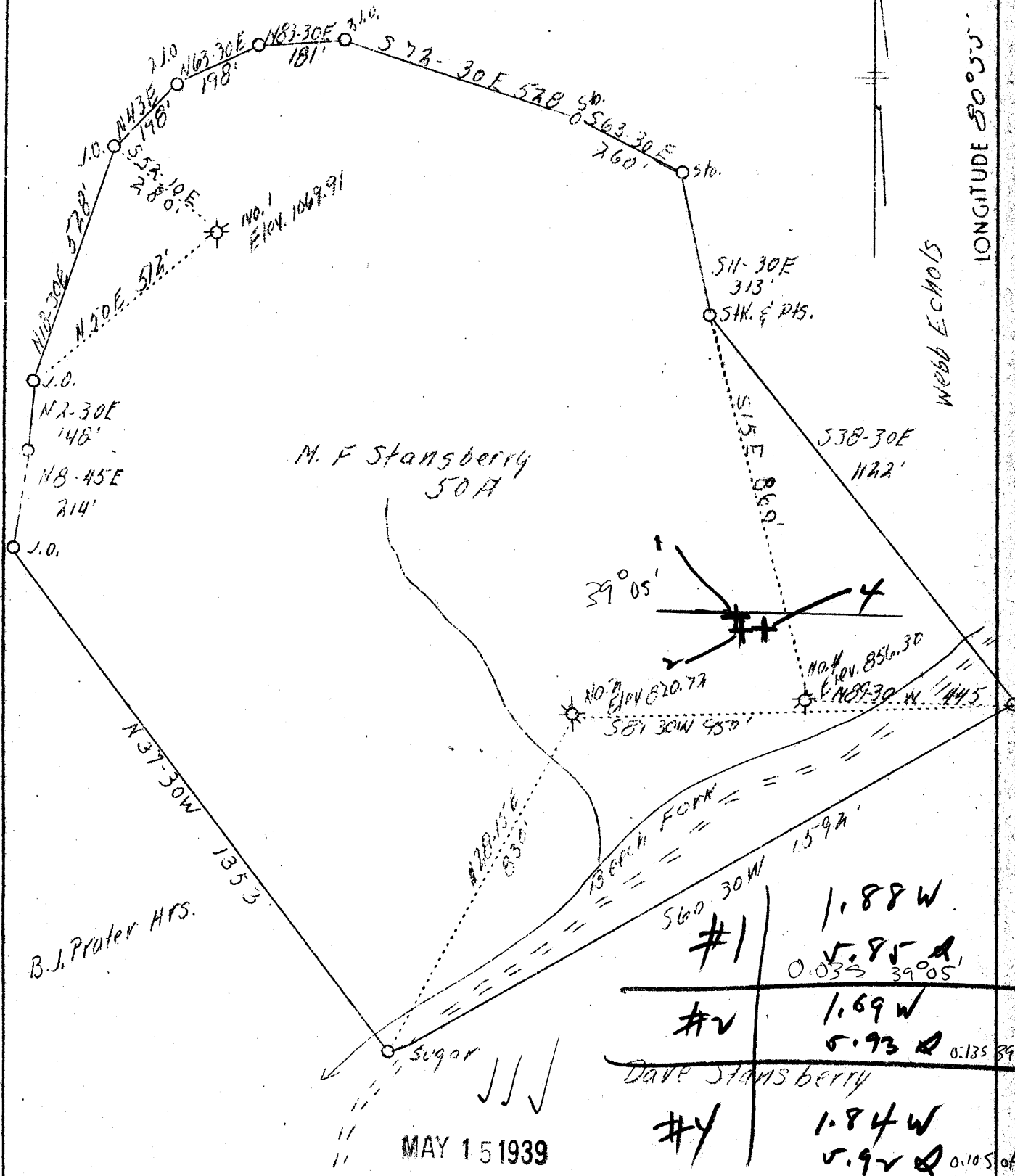


LATITUDE 39°10'

F.R. & Clark Kincaid

LONGITUDE 80°55'



Company Roane Nat'l Gas Co.
 Address Spencer, W.Va.
 Farm M. F. Stansbury
 Tract 50
 Well (Farm) No. 1 - 2 - 4
 El. (S. L.) #1 1069191 #2 870.72 #4 856.30
 Quadrangle Holbrook
 County Ritchie
 District Union
 Eng. L. F. Dye
 Eng. Reg. No. 804
 Date 4/25/39
 Scale 1" = 300'

WC
 + SW

STATE OF WEST VIRGINIA
 Department of Mines
 OIL AND GAS DIVISION
 Charleston

856.30 WELL LOCATION MAP
 File No. Rit-398-400-A & 401-A

x Denotes location of well on U.S. Topographic Maps, scale 1 to 2,500, latitude and longitude lines being represented by border lines as shown.
 - Denotes one inch spaces on border line of original tracing.