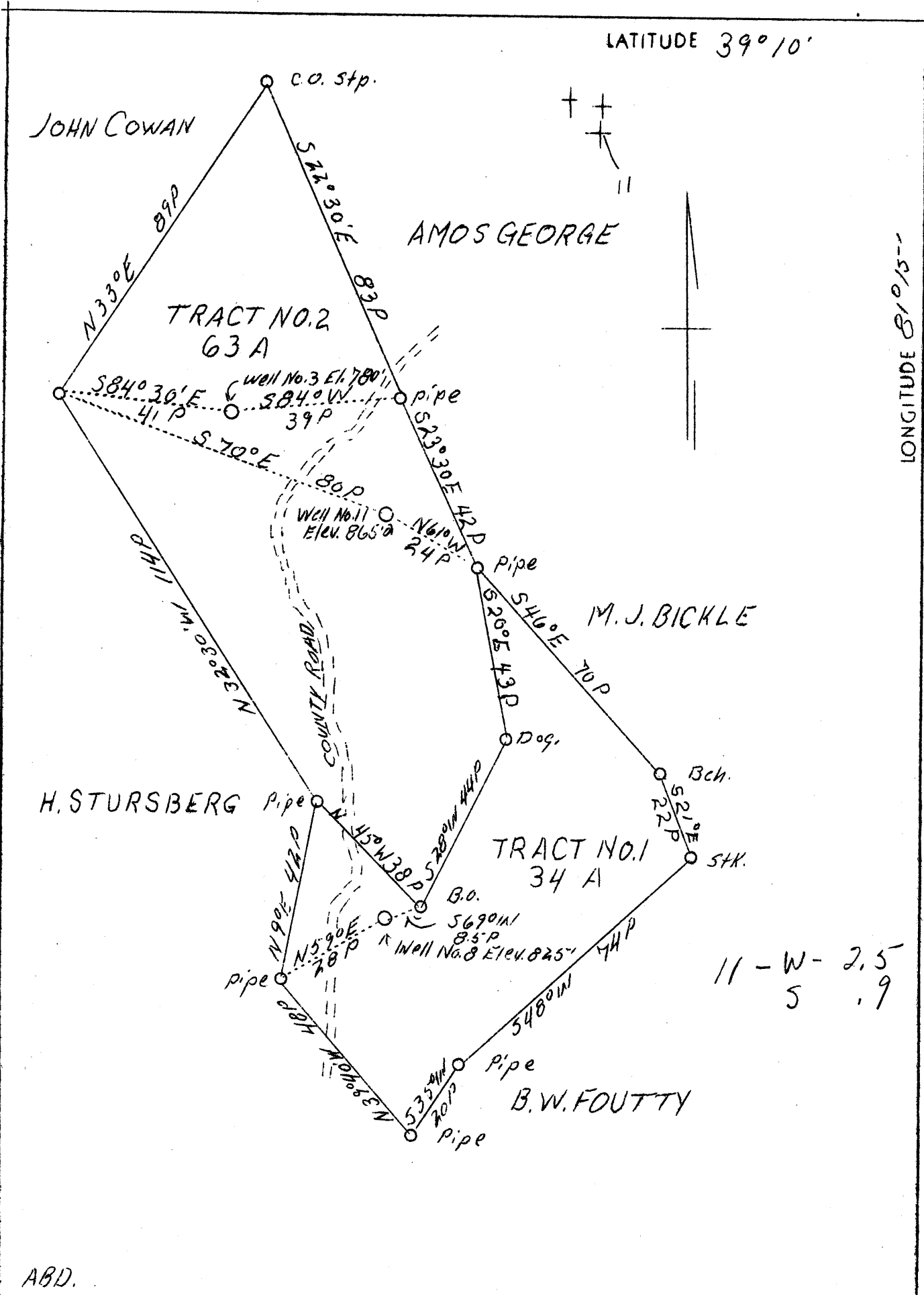


LATITUDE 39°10'

LONGITUDE 81°15'



11 - W - 2.5
5 .9

ABD.

Company	Astron Oil Co.
Address	Bridgeport, W.Va.
Farm	Herman Stursberg
Tract	1 & 2
Acres	34 & 63
Well (Farm) No.	3 - 8 - 11
El. (S.L.)	780' - 865' - 825'
Quadrangle	Elizabeth E
County	Ritchie
District	Grant
Eng.	J.E. Anderson
Eng. Reg. No.	Surveyor
Date	5/16/39
Scale	1" = 30P.

STATE OF WEST VIRGINIA
 Department of Mines
 OIL AND GAS DIVISION
 Charleston

WELL LOCATION MAP
 File No. Bit-405-A
 Well # 11

x Denotes location of well on U.S. Topographic Maps, scale 1 to 62,500, latitude and longitude lines being represented by border lines as shown.

- Denotes one inch spaces on border line of original tracing.