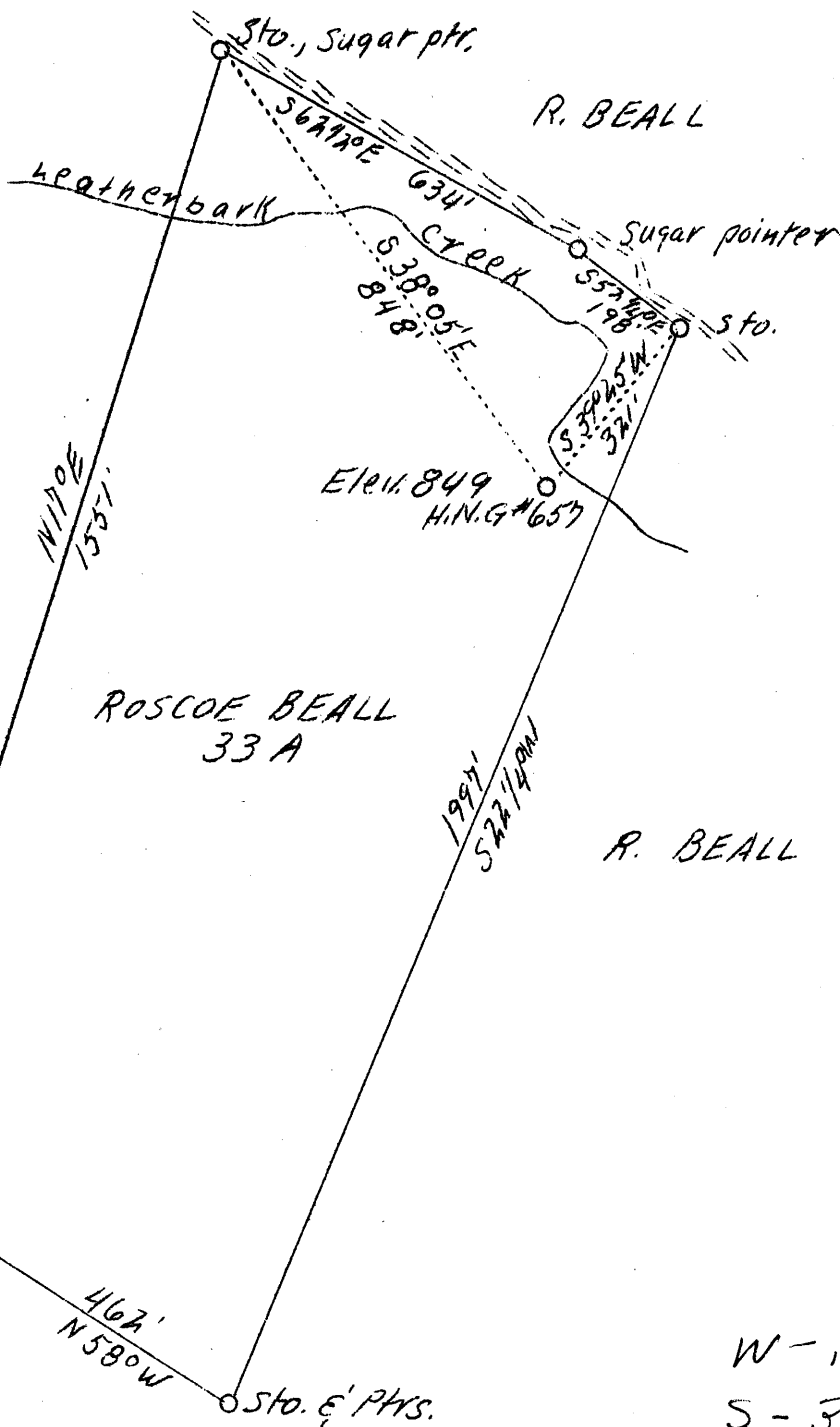


LATITUDE 39°05'

LONGITUDE 81°00'



GUMM



Ches. O. Stn

388'
N15°0' W

Stn.

TAYLOR

462'
N58°0' W

Stn. E. Phys.

W-145
S-3.99

ABD.

Company	F. S. Deem
Address	Harrisville, W. Va.
Farm	Roscoe Beall
Acres	33
Well (Farm) No.	1
Serial No.	H. N. G. # 657
Elevation (SL)	849
Quadrangle	Harrisville S.E.
County	Ritchie
District	Murphy
Engineer	B. F. Rinehart
Eng. Reg. No.	648
Drawing No.	187-M-R
Date	June 6, 1939
Scale	1" = 300'

STATE OF WEST VIRGINIA
 Department of Mines
 OIL & GAS DIVISION
 Charleston

WELL LOCATION MAP

File No. Rit-408-A

x Denotes location of well on U. S. Topographic Maps, scale 1 to 62,500, latitude and longitude lines being represented by border lines as shown.

- Denotes one inch spaces on border line of original tracing.

