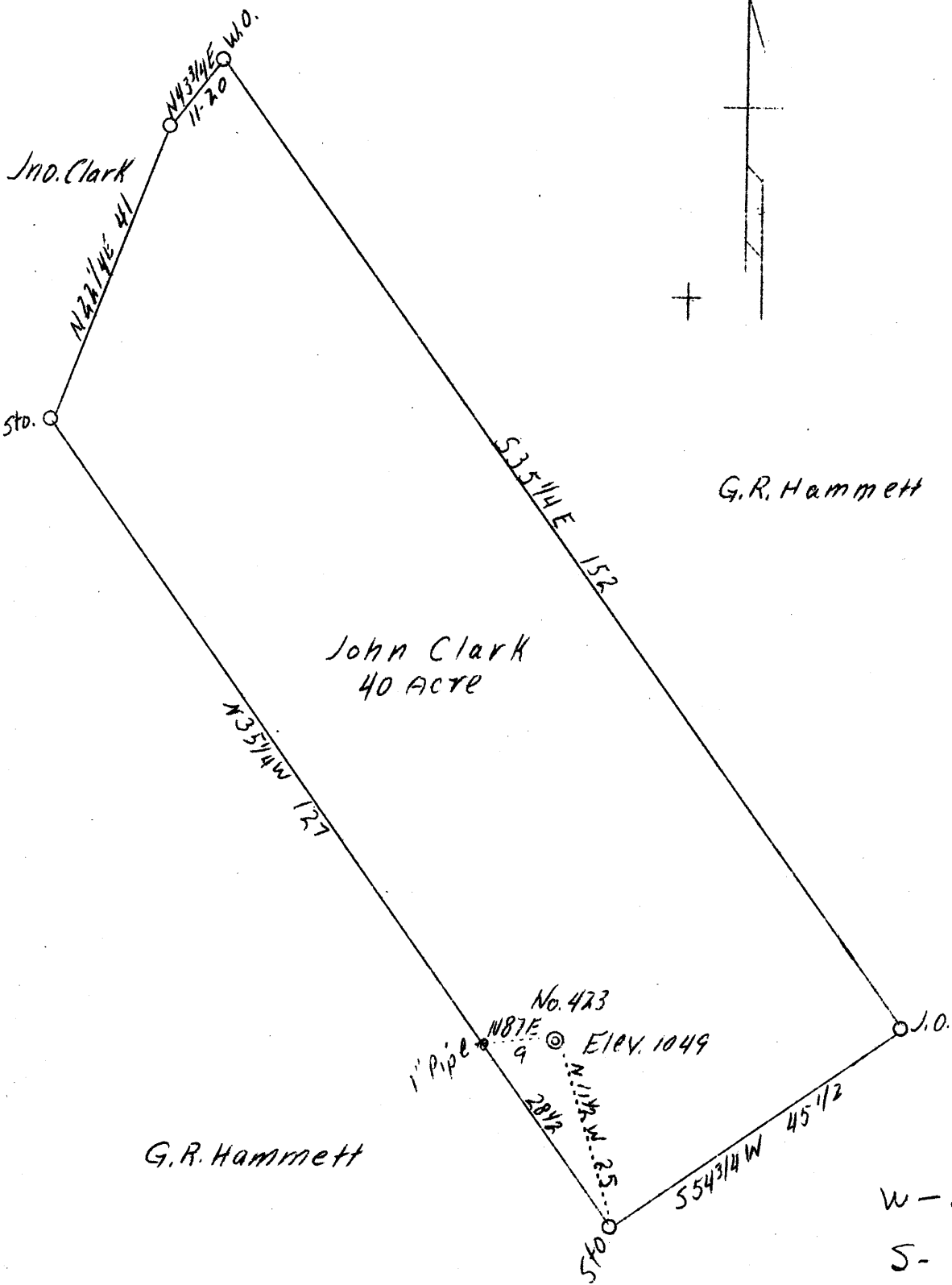


LATITUDE 39° 20'

LONGITUDE 81° 10'



ABD.

Company	Acme Abandoning Co.,
Address	West Union
Farm	John Clark
Acres	40
Well (Farm) No.	423
Elevation (SL)	1049
Quadrangle	St. Marys SW.
County	Ritchie
District	Grant
Engineer	A. K. Westfall
Eng. Reg. No.	Deputy County Surveyor
Date	June 24, 1939
Scale	1" - 20 poles

STATE OF WEST VIRGINIA
 Department of Mines
 OIL & GAS DIVISION
 Charleston

WELL LOCATION MAP

File No. Rit-410-A

x Denotes location of well on U. S. Topographic Maps, scale 1 to 62,500, latitude and longitude lines being represented by border lines as shown.

- Denotes one inch spaces on border line of original tracing.