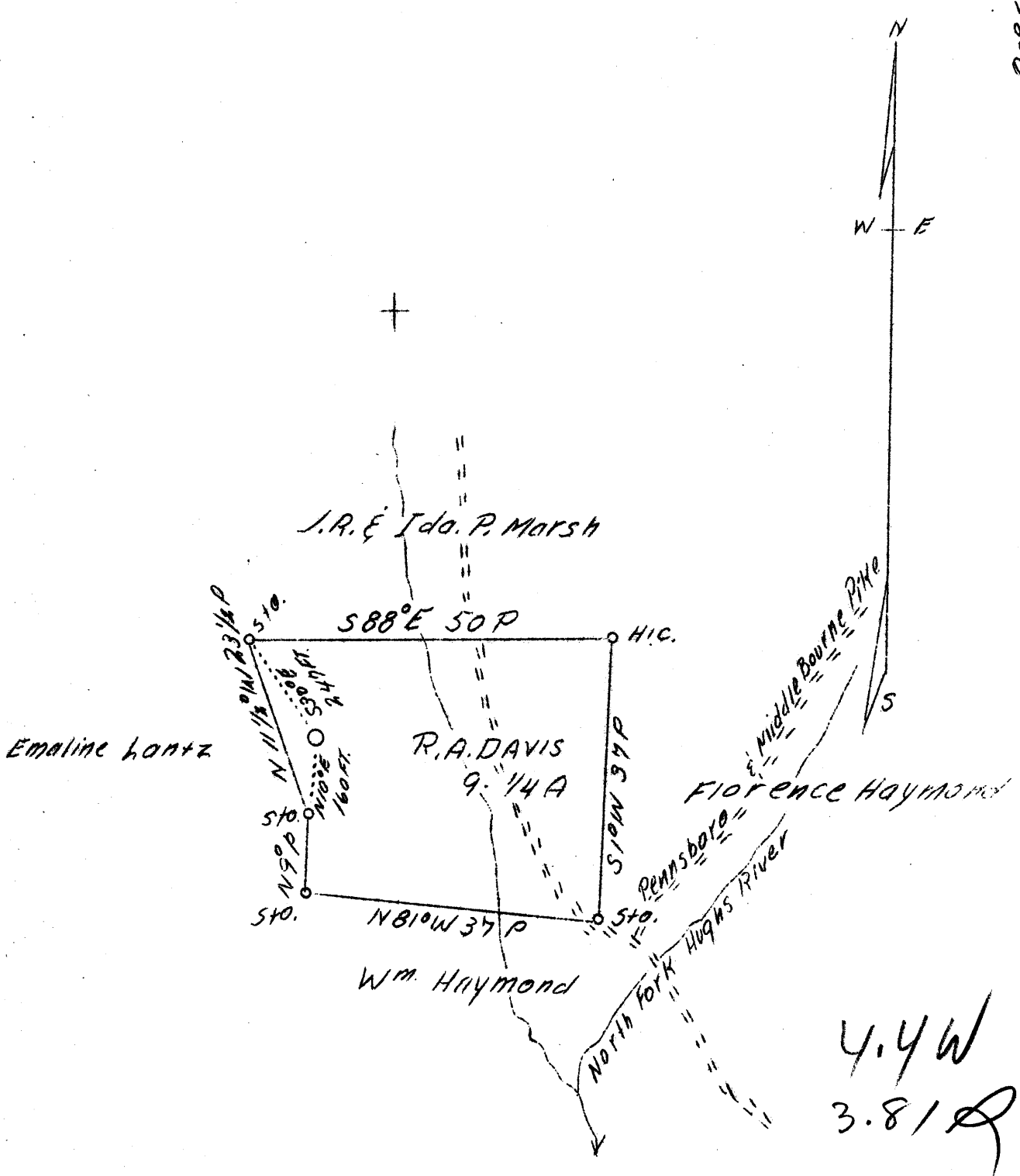


LATITUDE 39°25'

LONGITUDE 80°50'



ABD.

AUG 28 1939

Company	Delbert Bachelor
Address	Mole Hill, W. Va.
Farm	R. A. Davis
Acres	9-3/4
Well (Farm) No.	1
Elevation (SL)	908
Quadrangle	West Union
County	Ritchie
District	Clay
Engineer	J. V. Dunbar
Eng. Reg. No.	65
File No.	23 - L
Date	Aug. 15, 1939
Scale	20 poles to 1 inch

W

STATE OF WEST VIRGINIA
 Department of Mines
 OIL & GAS DIVISION
 Charleston

WELL LOCATION MAP

File No. TRIT-416-A

x Denotes location of well on U. S. Topographic Maps, scale 1 to 62,500, latitude and longitude lines being represented by border lines as shown.

- Denotes one inch spaces on border line of original tracing.