



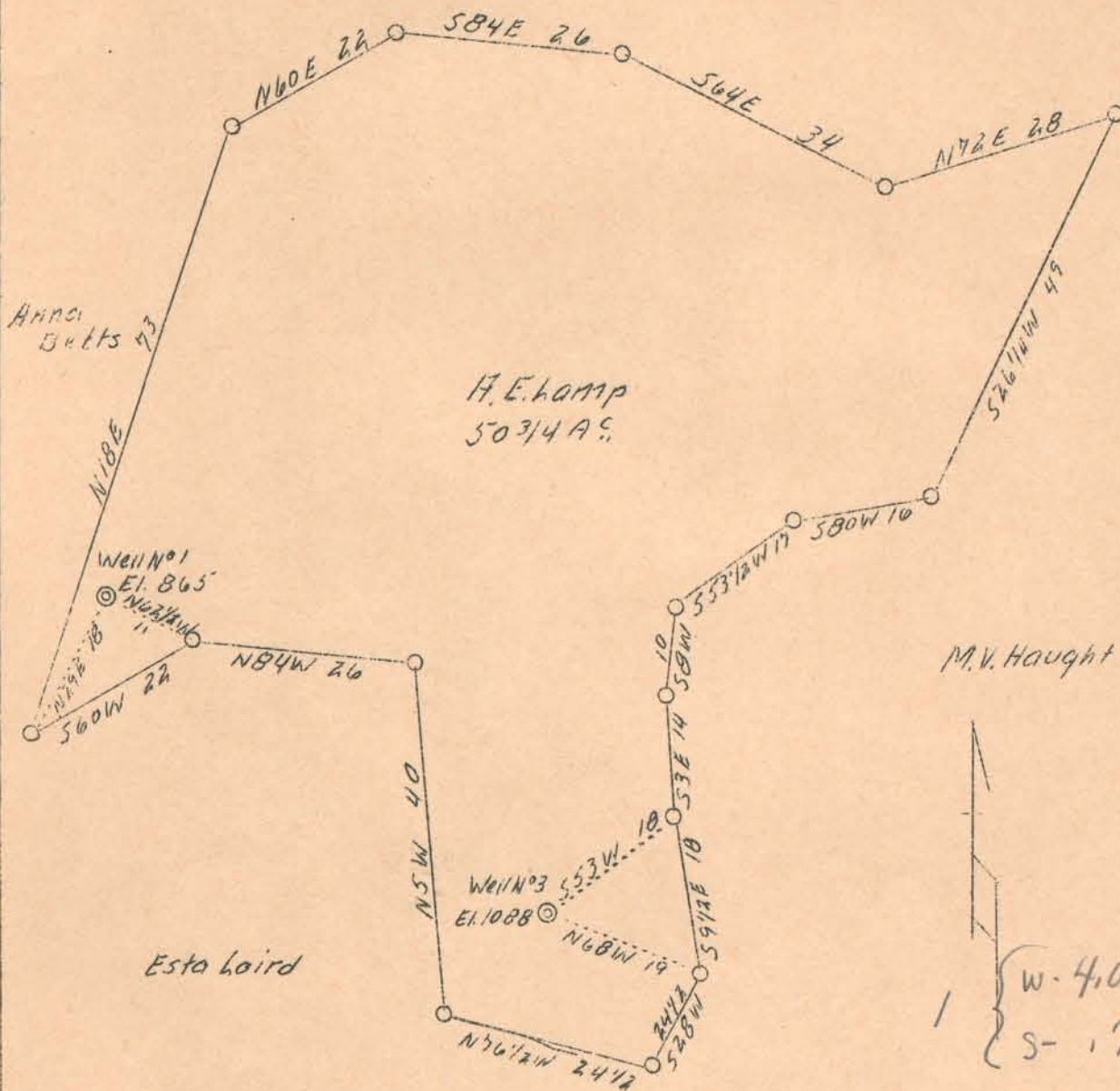


LATITUDE 39°05'

LONGITUDE 81°05'

++  
#1 #3

A.E. Lamp



M.V. Haight

1 { w- 4.02  
s- .79

3 { w- 3.88  
s- .84

ABD.

Company	W. R. Baker
Address	Beatrice, W. Va.
Farm	A. E. Lamp
Acres	50-3/4
Well (Farm) No.	1 and 3
Elevation (SL)	#1 865 - #3 1088
Quadrangle	Harrisville S.
County	Ritchie
District	Murphy
Engineer	A. K. Westfall
Eng. Reg. No.	Deputy County Surveyor
Date	Sept. 5, 1939
Scale	1" - 20 poles

STATE OF WEST VIRGINIA  
 Department of Mines  
 OIL & GAS DIVISION  
 Charleston

WELL LOCATION MAP

File No. Rit. 419E420-A

x Denotes location of well on U. S. Topographic Maps, scale 1 to 62,500, latitude and longitude lines being represented by border lines as shown.

- Denotes one inch spaces on border line of original tracing.