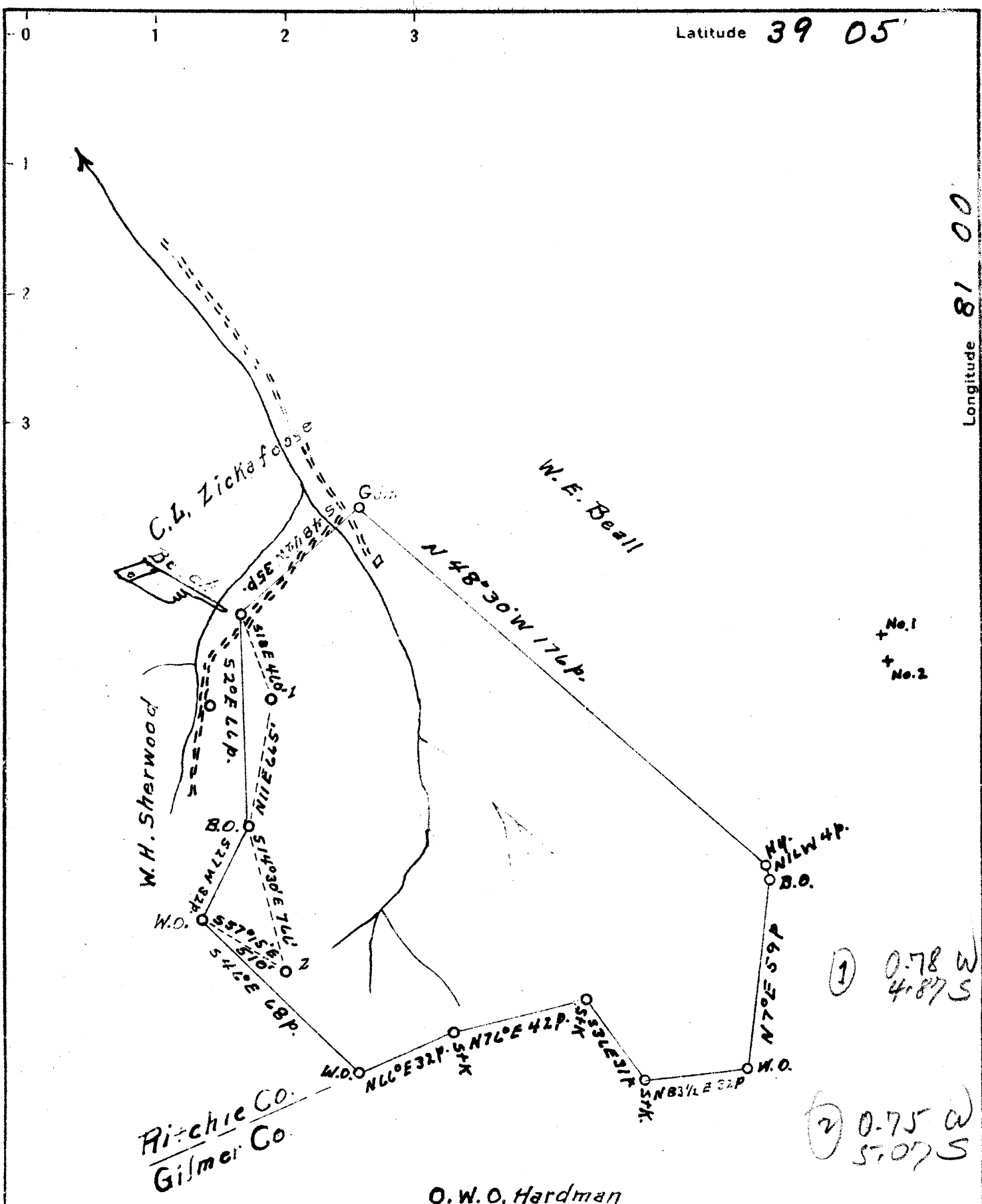


Latitude 39 05'

Longitude 81 00'



+ No. 1  
+ No. 2

(1) 0.78 W  
4.87 S

(2) 0.75 W  
57.07 S

O.W.O. Hardman

New Location   
 Drill Deeper   
 Abandonment

Company Bowser Gas & Oil  
 Address Parkersburg, W. Va.  
 Farm T.J. Park  
 Tract \_\_\_\_\_ Acres 100 Lease No. \_\_\_\_\_  
 Well (Farm) No. 1 & 2 Serial No. \_\_\_\_\_  
 Elevation (Spirit Level) (No. 1 = 980') (No. 2 = 974')  
 Quadrangle Harrisville  
 County Ritchie District Murphy  
 Engineer Bruce Ferrell, Jr.  
 Engineer's Registration No. \_\_\_\_\_  
 File No. \_\_\_\_\_ Drawing No. \_\_\_\_\_  
 Date May 7, 1941 Scale 40 P. = 1"

STATE OF WEST VIRGINIA  
 DEPARTMENT OF MINES  
 OIL AND GAS DIVISION  
 CHARLESTON

WELL LOCATION MAP  
 FILE NO. RIT-518A-519A  
 1 2

+ Denotes location of well on United States Topographic Maps, scale 1 to 62,500, latitude and longitude lines being represented by border lines as shown.  
 - Denotes one inch spaces on border line of original tracing.