

Latitude 39° 25'

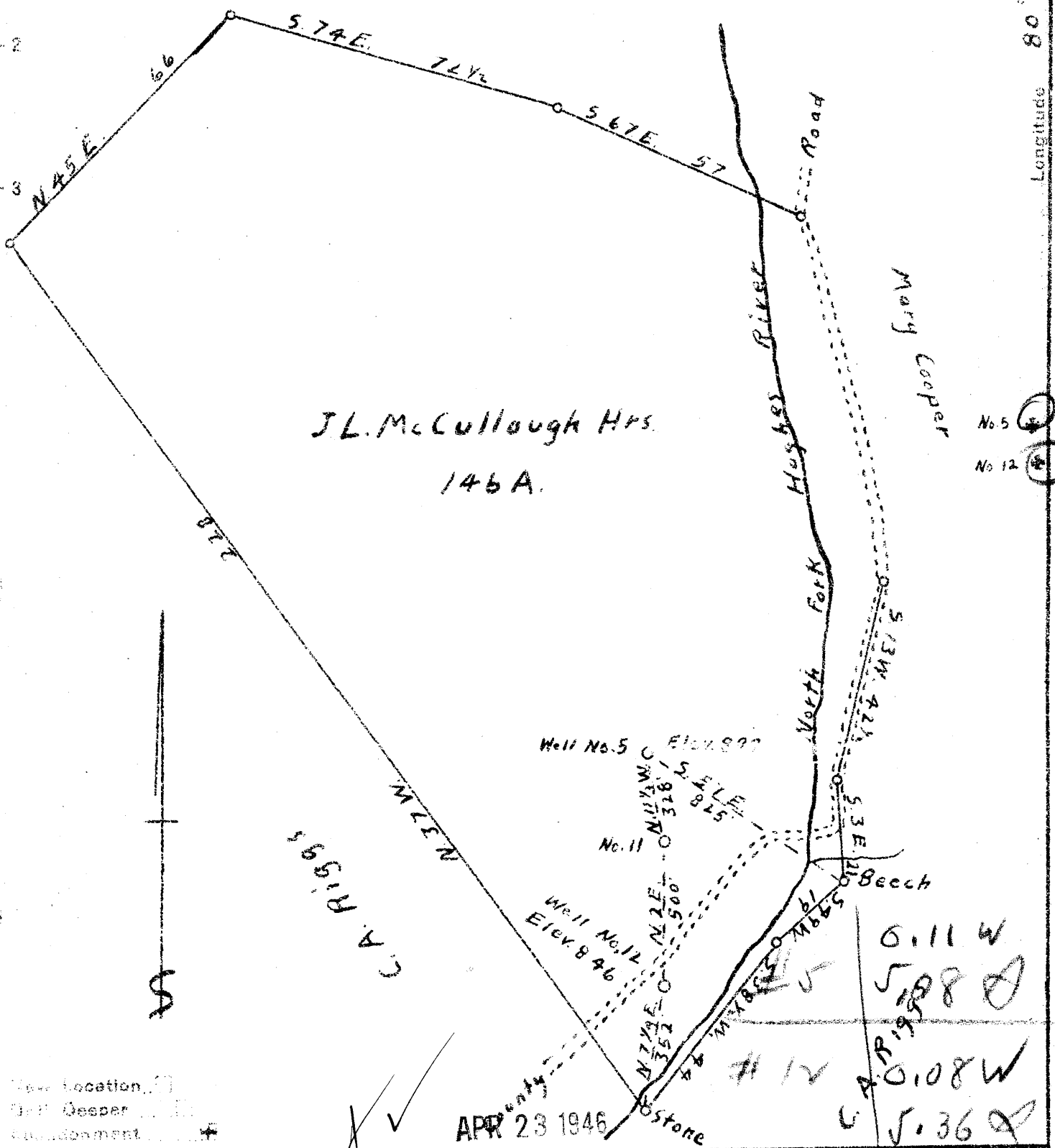
W.M. Ridgeway

Longitude 80° 55'

J.L. McCullough Hrs.  
146 A.

No 5

No 12



Company Bachelor & Ray Inc.  
 Address Mole Hill, W. Va.  
 From J.L. McCullough  
 Tract \_\_\_\_\_ Acres 146 Lease No. \_\_\_\_\_  
 Well (Farm) No. 5 Serial No. \_\_\_\_\_  
 Elevation (Saint Level) 899  
 Quadrangle West Union WC  
 County Ritchie District Clay  
 Engineer A.K. Westfall  
 Engineer's Registration No. County Surveyor  
 File No. \_\_\_\_\_ Drawing No. \_\_\_\_\_  
 Date Sept. 27, 1943 Scale 1" = 30 Poles

STATE OF WEST VIRGINIA  
 DEPARTMENT OF MINES  
 OIL AND GAS DIVISION  
 CHARLESTON

WELL LOCATION MAP  
 FILE NO. RIT-753-A

† Denotes location of well on United States Topographic Maps, scale 1 to 62,500, latitude and longitude lines being represented by border lines as shown.

— Denotes one inch spaces on border line of original tracing.